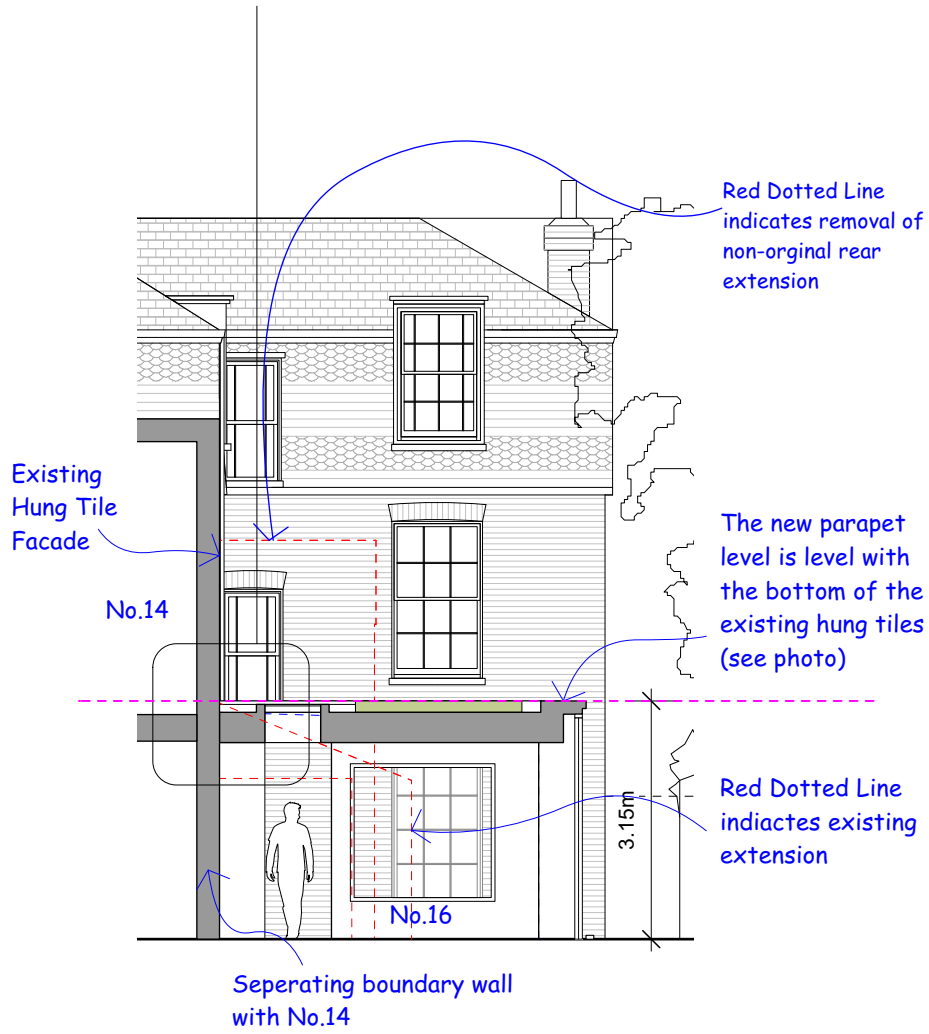
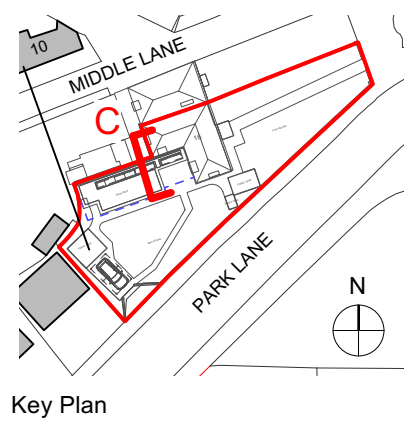


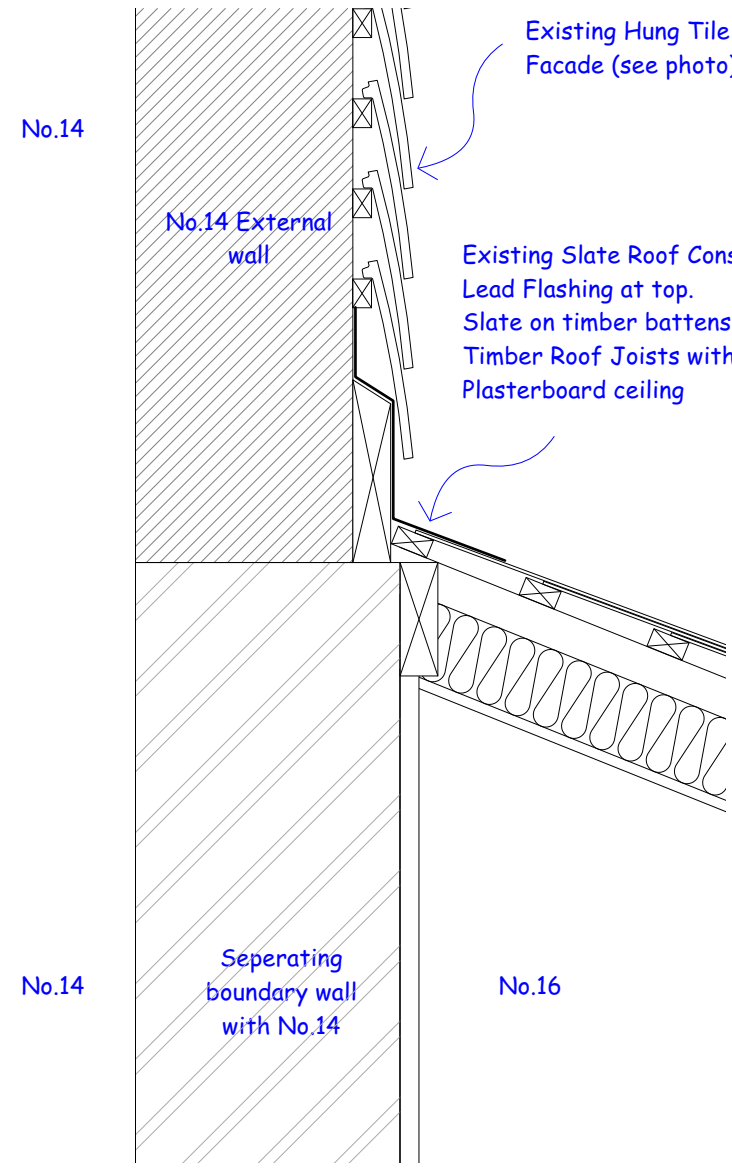
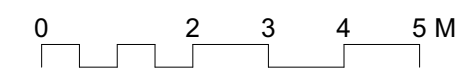
# PLANNING

## DETAIL C

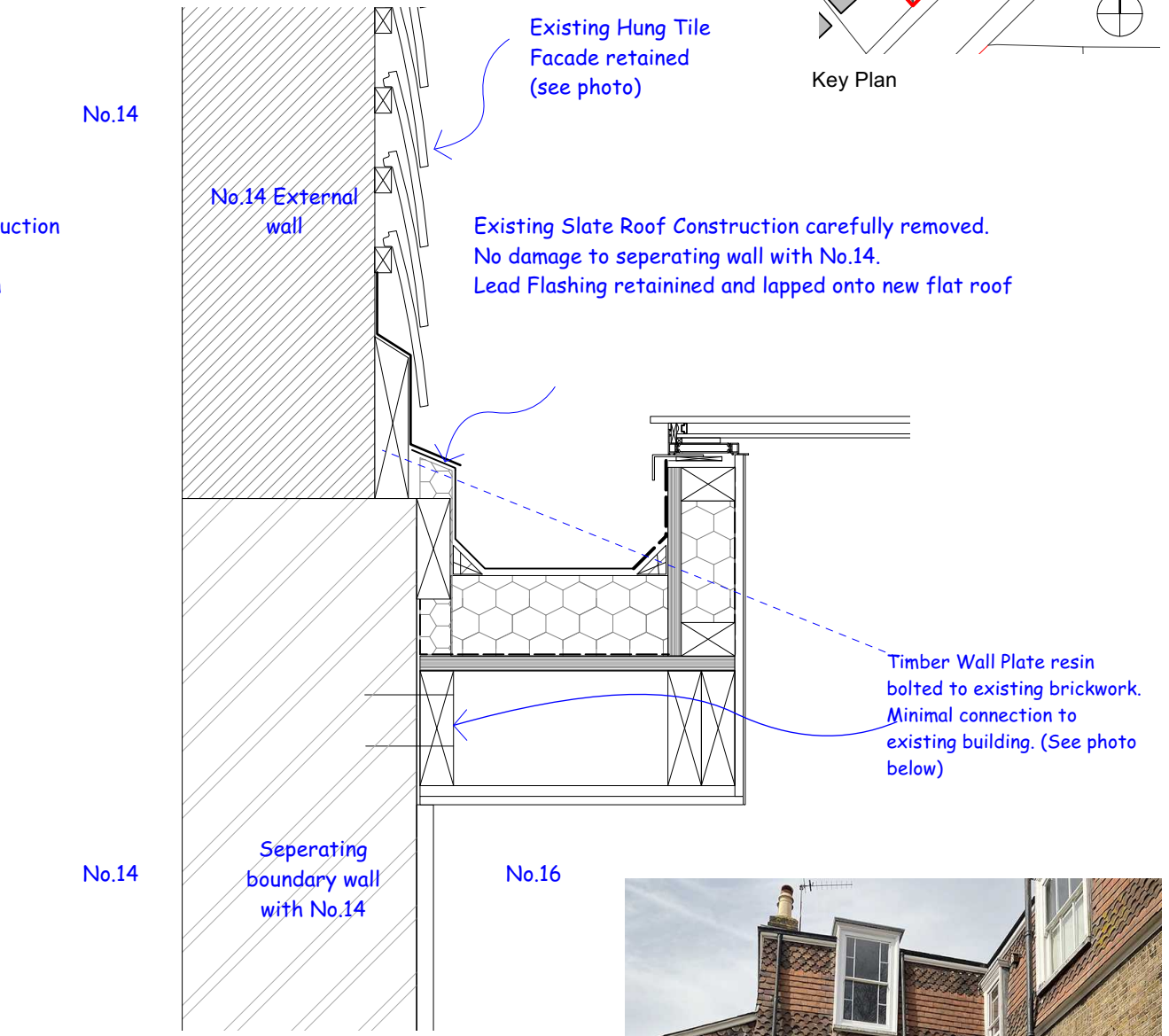
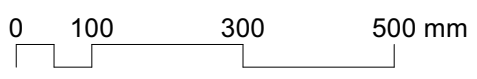
Note - from 1:10 details opposite, no brickwork will be removed. No hung tiles will be removed. New Roof will utilise existing lead flashing to maintain weathering. Minimal intervention with existing.



1 Proposed Rear Section C  
Scale: 1:100



2 Existing Ridge Detail C  
Scale: 1:10



3 Proposed Roof Ridge Detail C  
Scale: 1:10

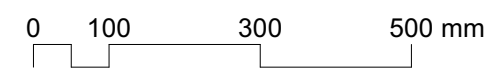


Illustration of Timber Wall Plate