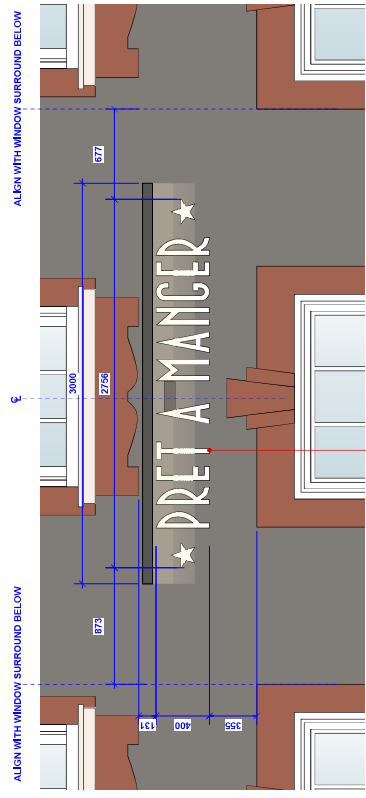
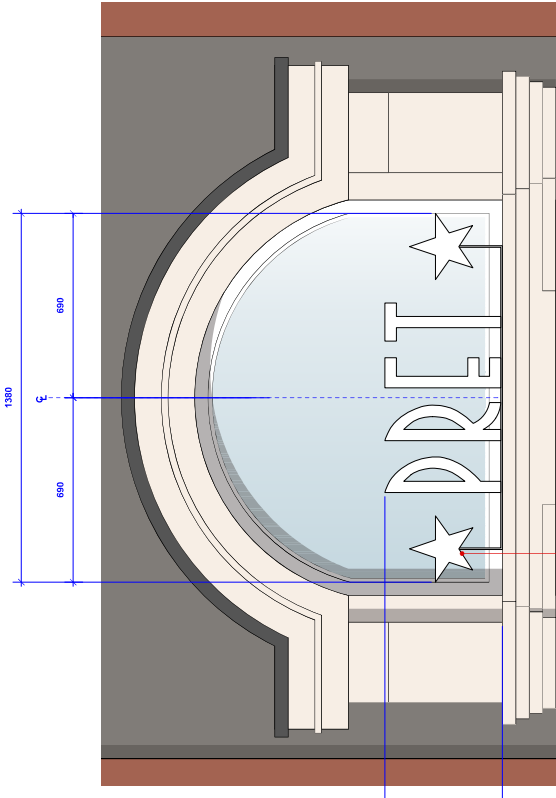
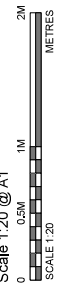


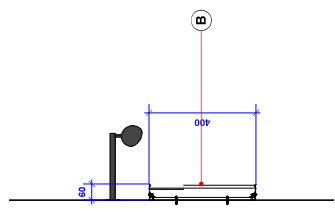
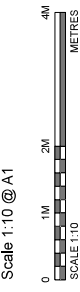
Proposed Shopfront Signage Details



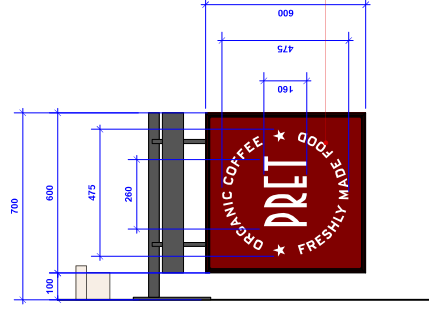
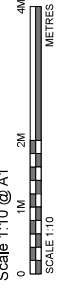
**Sign Type B
Front Elevation**
Scale 1:20 @ A1



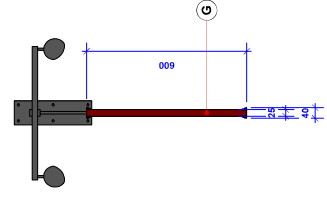
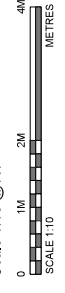
**Sign Type E
Front Elevation**
Scale 1:10 @ A1



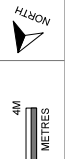
**Sign Type B
Section**
Scale 1:10 @ A1



**Sign Type G
Front Elevation**
Scale 1:10 @ A1



**Sign Type G
Side Elevation**
Scale 1:10 @ A1



Important Note:
This drawing is copyright of Studio Fox Ltd and no portion should be used without consent. All dimensions and levels on this drawing are to be taken from the drawing. Any discrepancies between this drawing and any other drawings or documents referred to, Studio Fox Ltd, prior to commencement of any work. If in doubt ask!

Stage	Status
Design Review:	✓
Blue Print Meeting:	
For Construction:	
As Built:	

Revision:	Date:	By:	Description:
A	11.03.22	RL	Signage updated as per Pret Comments.
B	16.03.22	MC	Signage updated as per Pret Comments. Sign Type E to be non illuminated.
C	24.05.22	RL	Signage updated as per conservation officer comments.
D	07.07.22	G CJ	Facias join removed

Pret a Manger
Client:
6 High Street Teddington TW11 8EW
Project:

Proposed Shopfront Signage Details

Drawn By:	Scale:	Drawn Date:	Revised Date:
GFF	1:20 (A1)	24.01.22	07.07.22
Drawing No:	Revision:		
22-PRET-1TED/02.3	D		

Notes:
01 New stainless steel bracket to support non illuminated PRET signage. Signage to be illuminated. Signage to be illuminated. Bracket stainless steel. Signage supplier to provide detail for approval
02 Existing glazed fanlight
Signage:
A 60mm Brushed powder coated aluminium panel. RAL 3004, Organic Coffee + Freshly Made Food 18mm deep flat cut metal with letters & star affixed to OMITTED stainless panel. Overhead lighting via externally mounted LED light trough powder coated RAL 7016. Modules will require a 12v power supply unit. Illumination levels not to exceed 120cd/m².
B Externally illuminated. PRET A MANGER - 80mm Bull up brushed stainless steel. 18mm deep flat cut metal with letters & star affixed to OMITTED stainless panel. Overhead lighting via externally mounted LED light trough powder coated RAL 7016. Modules will require a 12v power supply unit. NO LETTERS TO COVER EXISTING BRIGGS
C Externally illuminated curved powder coated aluminium panel. RAL 3004, Organic Coffee + Freshly Made Food 18mm deep flat cut metal with letters & star affixed to OMITTED stainless panel. Overhead lighting via externally mounted LED light trough powder coated RAL 7016. Modules will require a 12v power supply unit. Illumination levels not to exceed 120cd/m².
D Non illuminated curved powder coated aluminium panel. RAL 3004.
E No illumination. PRET A MANGER - 80mm Bull up brushed stainless steel with 5mm oval LED perspex letter facets. Installed in front of existing glazed panel light
F Illuminated flat cut stainless steel non illuminated letters. All letters to be illuminated. Illumination levels not to exceed 120cd/m². Existing panel to suit existing section mounted into the glazing. Details to be discussed
G Externally illuminated. Projection sign 600mm x 225mm. Timber sign painted RAL 3004 with feature edge timber board to the perimeter. White vinyl graphics to both sides. Overhead lighting via externally mounted LED light trough powder coated RAL 7016. Modules will require a 12v power supply unit. Illumination levels not to exceed 120cd/m². Cable to be concealed within arms. Projection arms to be securely fixed to building structure.