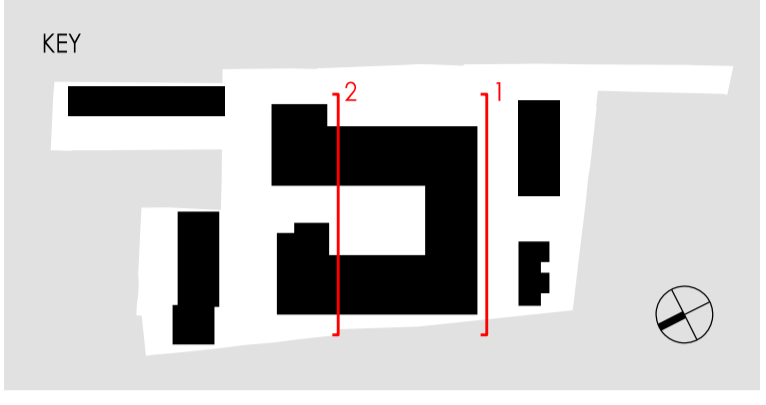




GENERAL NOTES

FIGURES DIMENSIONS ARE GIVEN TO STRUCTURE UNLESS INDICATED OTHERWISE.
 ALL DIMENSIONS TO BE CHECKED ON SITE PRIOR TO COMMENCEMENT OF WORK.
 DRAWINGS TO BE FOR INFORMATION ONLY. ALL CONTRACT DOCUMENTS, CONDITIONS AND SPECIAL CONDITIONS, SPECIFICATIONS, NOTIFICATIONS AND EMPLOYER'S REQUIREMENTS SHALL BE AVAILABLE TO THE DRAWING USER.
 ANY DISCREPANCY MUST BE BROUGHT TO THE ATTENTION OF AHR IMMEDIATELY.
 ANY MODIFICATION TO THE DRAWING MUST BE CARRIED OUT BY AHR.
 THE DRAWING IS THE PROPERTY OF AHR ARCHITECTS LIMITED. PLEASE DO NOT REPRODUCE OR TRANSMIT IN ANY MANNER WITHOUT THE WRITTEN PERMISSION OF AHR ARCHITECTS LIMITED.
 THESE NOTES OF CONTRACT DOCUMENTS SHALL BE GIVEN TO THE DRAWING USER. ELEMENTS OF DRAWING INCLUDING DIMENSIONS, LOCATIONS, DIMENSIONS, LINES, PIPES AND WIND BRACING TO BE TO BE SHOWN IN ALL VIEWS AND SPECIFICATIONS.
 ALL STRUCTURAL ELEMENTS ARE SHOWN INDICATED. FOR ALL ELEMENTS OF STRUCTURE REFER TO STRUCTURAL DRAWINGS AND SPECIFICATIONS FOR DIMENSIONS AND SPECIFICATIONS.
 ALL MECHANICAL AND ELECTRICAL ELEMENTS ARE SHOWN INDICATED. FOR ALL MECHANICAL AND ELECTRICAL ELEMENTS REFER TO MECHANICAL AND ELECTRICAL DRAWINGS AND SPECIFICATIONS.
 FOR ALL MECHANICAL AND ELECTRICAL ELEMENTS REFER TO MECHANICAL AND ELECTRICAL DRAWINGS AND SPECIFICATIONS.



MATERIAL SCHEDULE

DARK BRICK	LIGHT BRICK
METAL ELEMENTS AND FRAMES RAL 8008 - OLIVE BROWN	METAL MESH VERTICAL FINES RAL 8008 - OLIVE BROWN
STANDING SEAM METAL CLADDING RAL 8008 - OLIVE BROWN	CONTRASTING STONE EFFECT MATERIAL

1 BLOCK B1: SOUTH ELEVATION



20/05/22	P03	AMENDMENTS FOR NEW PLANNING APPLICATION	PP	DDS
10/03/20	P02	ASHP UNITS INDICATED	PP	DDS
15/10/19	P01	MEKA ISSUE	PP	DDS
DATE	REV.	DESCRIPTION	BY	CHECKED

AHR
 ARCHITECTS INTERIOR DESIGNERS
 MASTER PLANNERS URBAN DESIGNERS

CUSTOMER	Notting Hill Genesis
PROJECT	St Clare SCL-AHR
DRAWING TITLE	Block B1 South Elevation Section Looking North
STATUS	PLANNING
SCALE	1:100@A1 / 1:200@A3
DATE	2019.05
DRAWING NO.	B1-XX-DR-A-20-111-P1
REVISION	P03

2 BLOCK B1: SECTION LOOKING NORTH