

 Site Boundary



0 10 20 30m
Scale at A4: 1:1,500



Figure 6

1866 Ordnance Survey



 Site Boundary

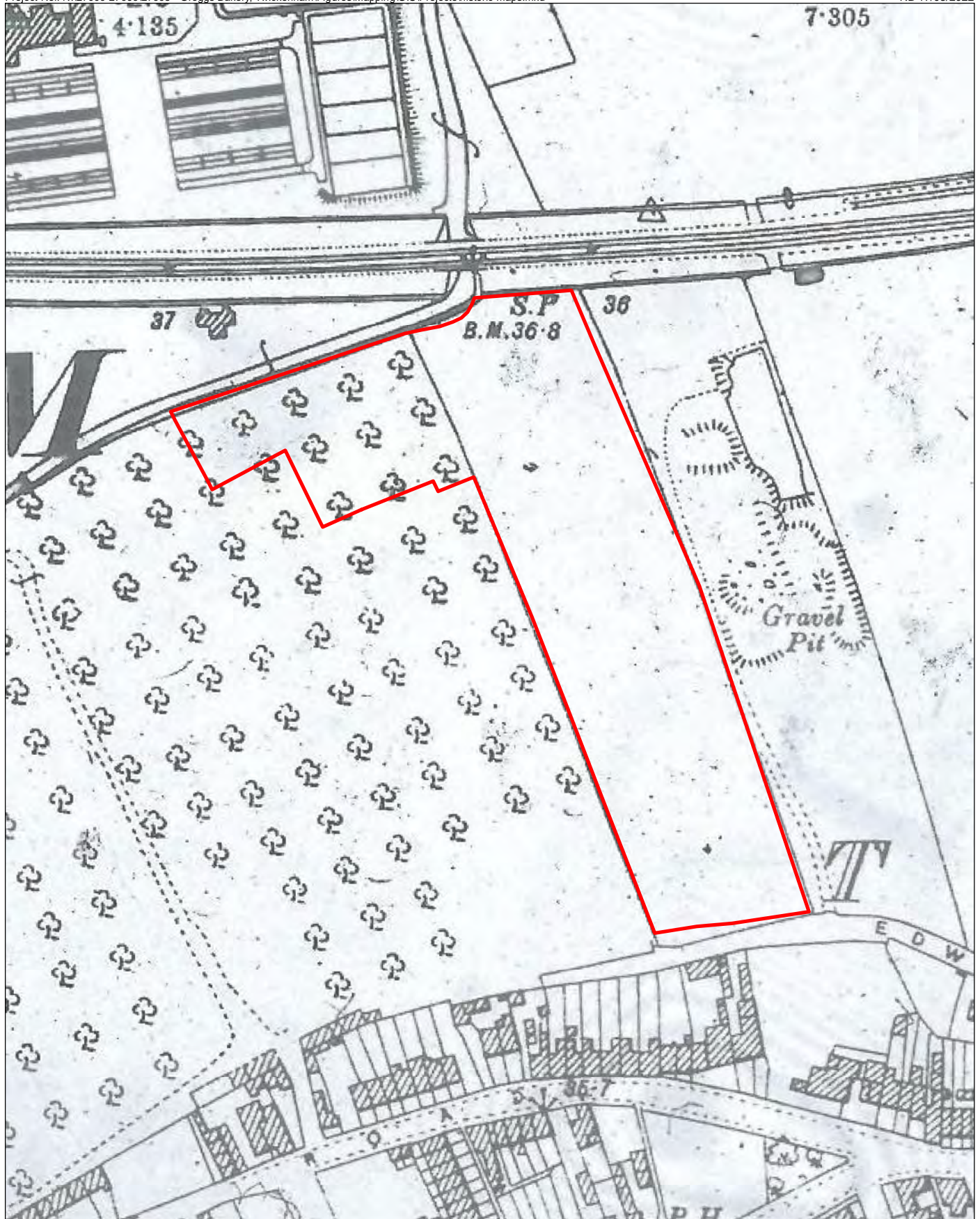


0 25 50 75m
Scale at A4: 1:2,500



Figure 7

1888 Bacon (A – Z of Victorian London)



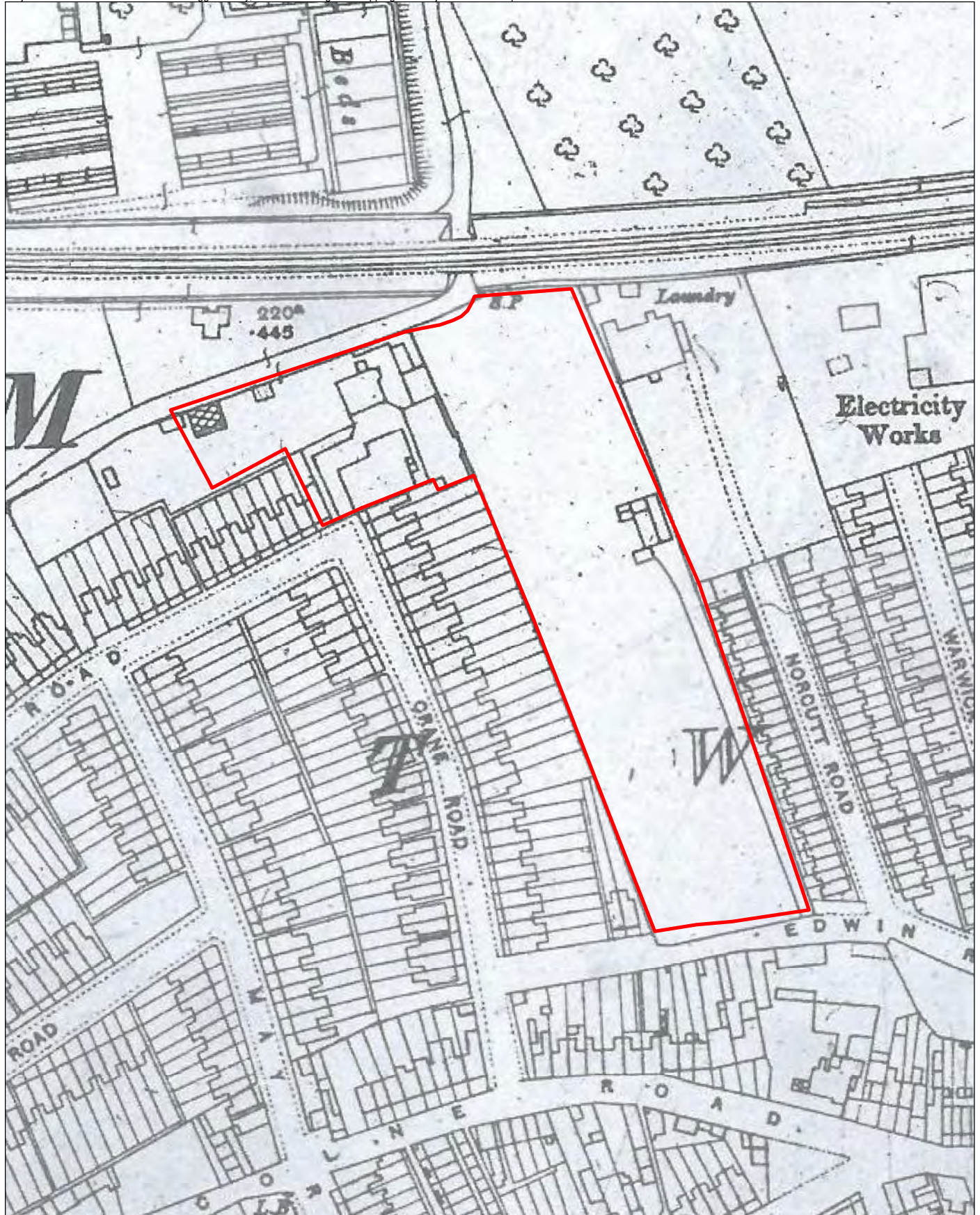
 Site Boundary



0 10 20 30m
Scale at A4: 1:1,500



Figure 8
1898 Ordnance Survey



 Site Boundary



0 10 20 30m
Scale at A4: 1:1,500



Figure 9

1915 Ordnance Survey



 Site Boundary



0 10 20 30m
Scale at A4: 1:1,500



Figure 10

1934 Ordnance Survey



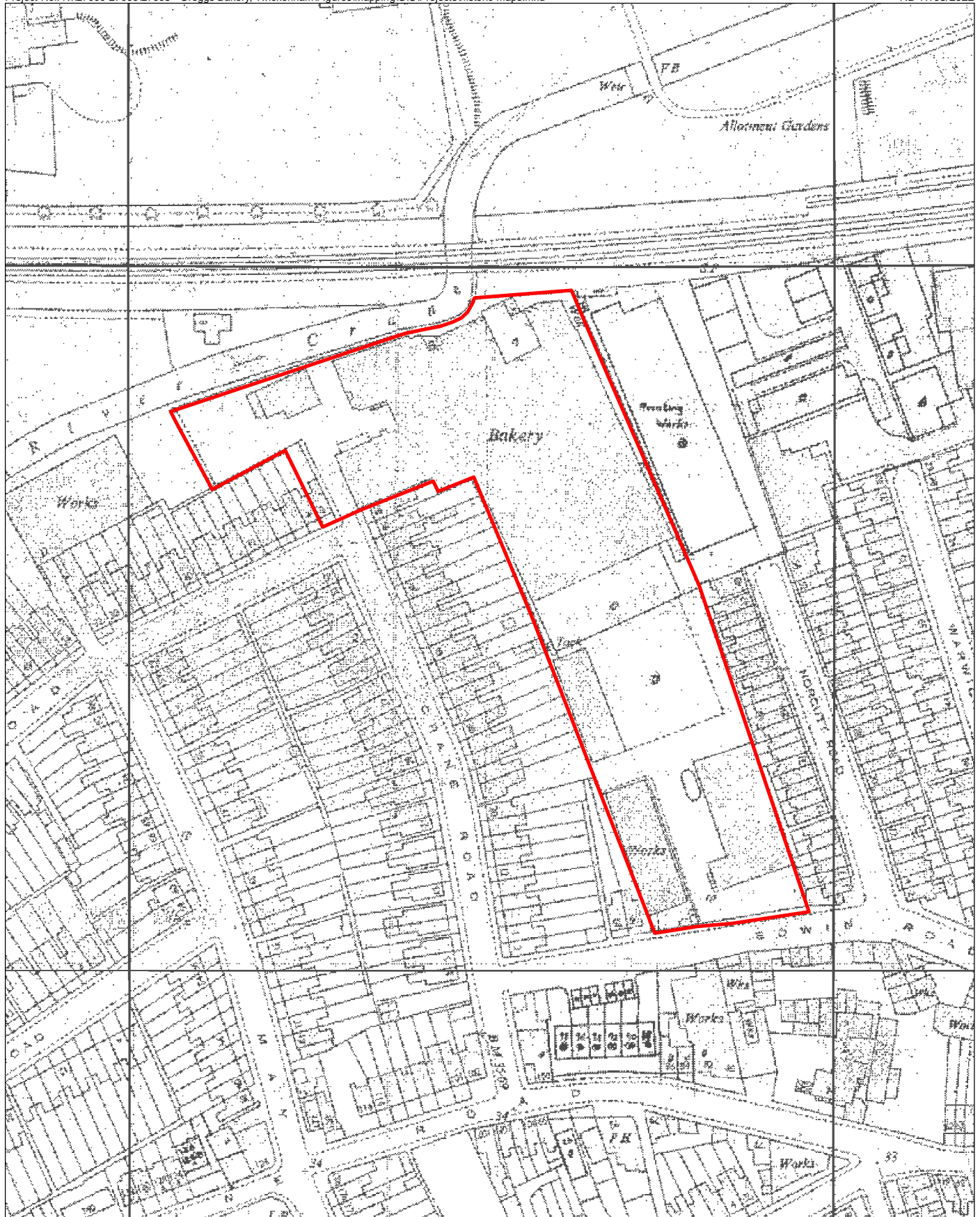
 Site Boundary



0 10 20 30m
Scale at A4: 1:1,500



Figure 11
1961 Ordnance Survey



 Site Boundary



0 10 20 30m
Scale at A4: 1:1,500



Figure 12
1973 Ordnance Survey



 Site Boundary




0 10 20 30m
Scale at A4: 1:1,500



Figure 13
2003 Google Earth View



 Site Boundary



0 10 20 30m
Scale at A4: 1:1,500



Figure 14
2015 Google Earth View



 Site Boundary



0 10 20 30m
Scale at A4: 1:1,500



Figure 15

Site as Existing



 Site Boundary



0 10 20 30m
Scale at A4: 1:1,250



Figure 16
Proposed Development



PLATES



Plate 1: Edwin Road entrance viewed North with flour silo's mid distance.



Plate 2: Gould Road entrance looking North with 2 Gould Road West of the gates.



Plate 3: Gould Road administration block viewed from south-west.



Plate 4: Gould Road northern range of administration buildings viewed from the south. Canalized River Crane immediately behind.



Plate 5: Gould Road office parking viewed East to West.



Plate 6: Main processing plant western half viewed North to South.



Plate 7: Main processing building eastern half viewed North to South.



Plate 8: Oven rank along eastern edge of the site viewed from the north-west.



Plate 9: River frontage viewed from the east to west. River crane immediately north of the fence line.



Plate 10: Eastern site boundary viewed North to South with residential properties along Norcutt Road to the East.