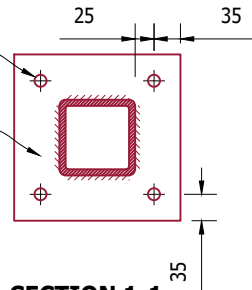


**SECTION T103**  
SCALE 1:10

M16 mechanical anchors

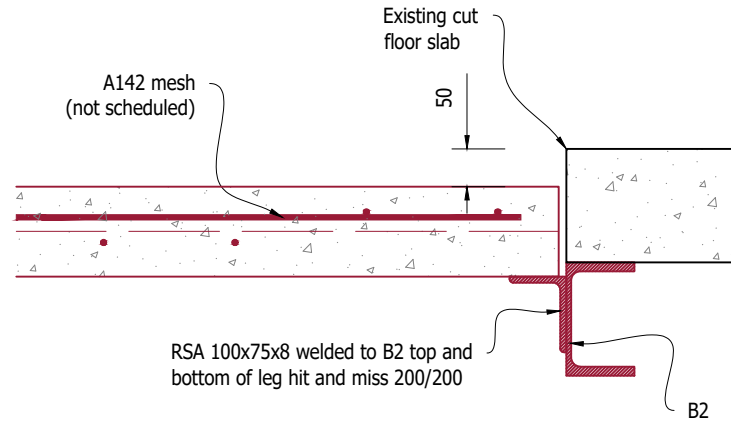
10 mm thick steel plate welded to column with 6 mm fillet welds



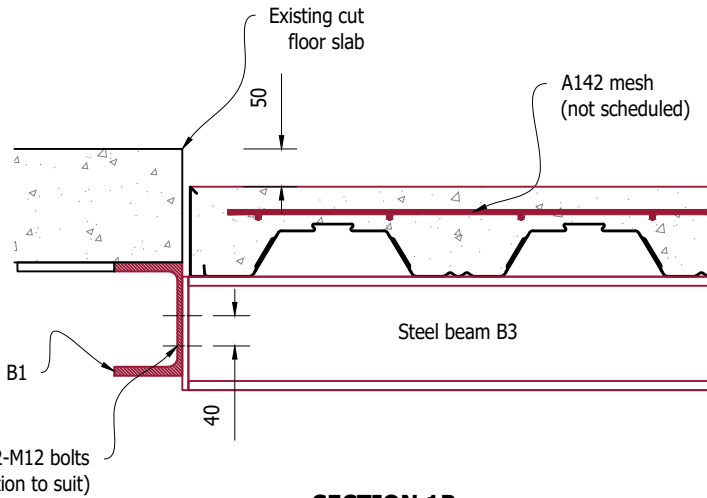
**SECTION 1-1**  
SCALE 1:10

**Section Details**

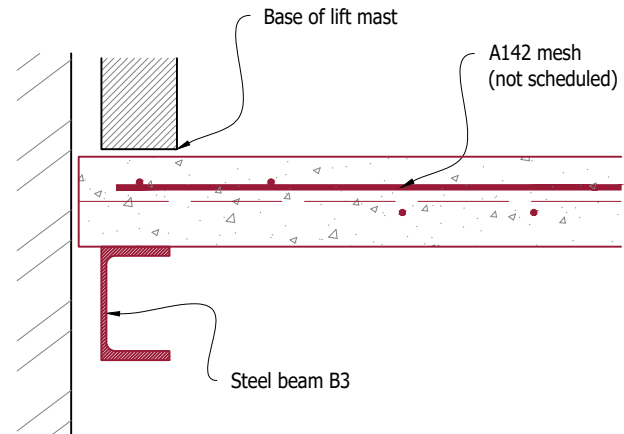
- Column shape may vary
- Plate size to suit anchor position



**SECTION 1A**  
SCALE 1:10



**SECTION 1B**  
SCALE 1:10



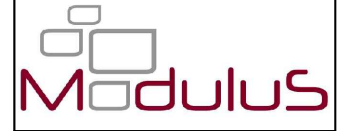
**SECTION 1C**  
SCALE 1:10

**Notes:**

1. Do not scale for construction purposes.
2. Refer to drawing P1 for drawing notes.
3. Refer to drawing P2 for foundation requirements.
4. Refer to drawing P3 for details of beam & block floors.
5. All welds to be Min. 6 mm fillet welds.
6. All bolts to be Min. Class 8.8.

-	For Construction	01.06.2022	NP	OB
No.	Revision	Date	By	Ckd

THIS DRAWING IS COPYRIGHT OF MODULUS SE LTD  
IT SHALL ONLY BE USED FOR THE PROJECT STATED



**Offices**  
 • Basingstoke T: 01256 768 588  
 • London (Egham) T: 020 7112 8840  
 W: www.modulus.ltd

Project No. 3375  
 Project Name  
 Waldegrave Suite - St Mary's Uni

Title  
 Design Details - Formation level

Drawn	NP	Date	17.06.2022	Scale	AS SHOWN: A4
Dwg No.	3375 - S101	Rev.			-