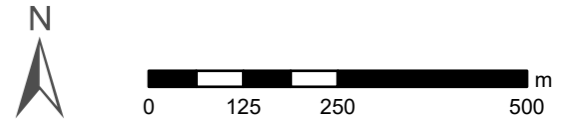
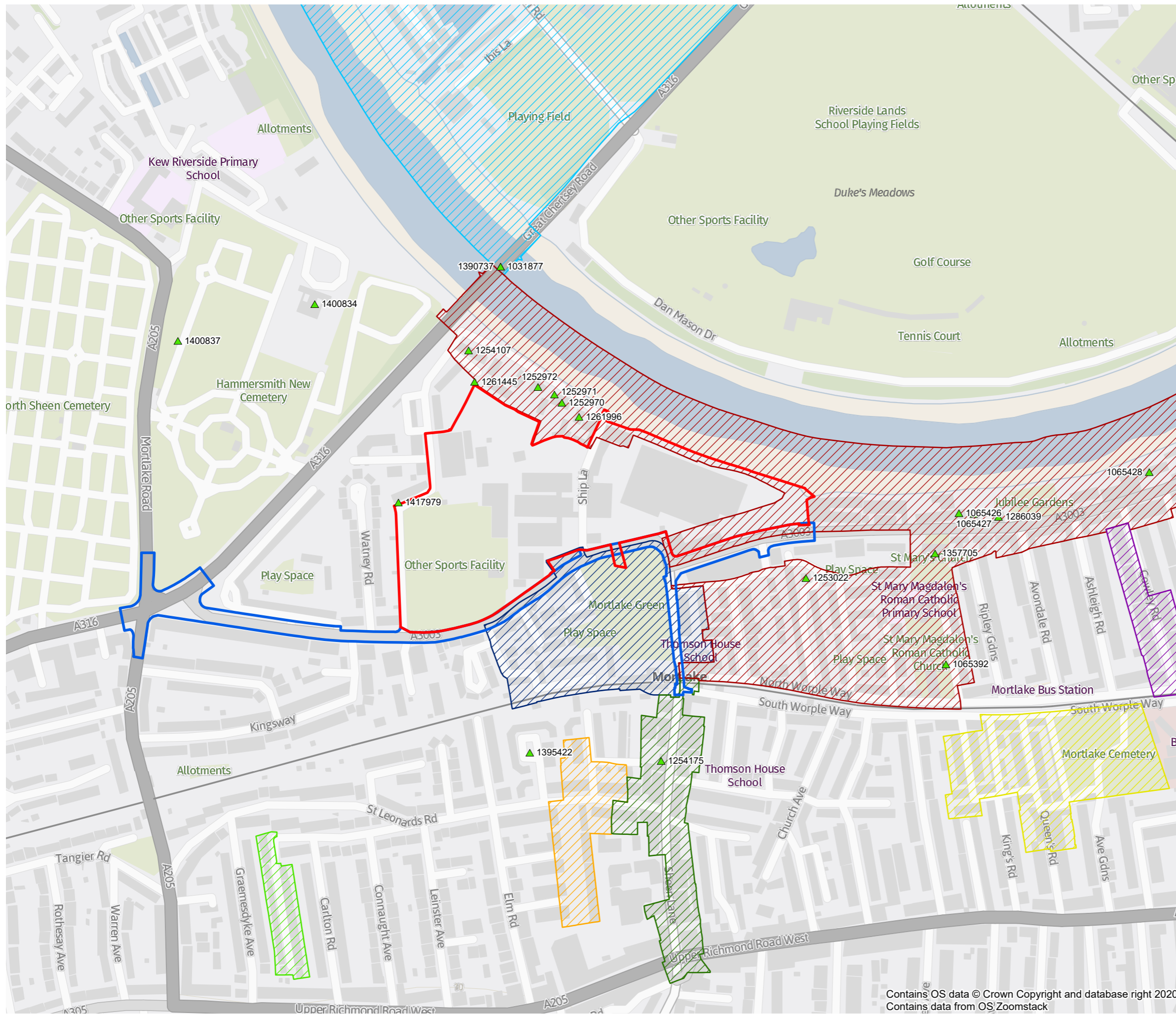


- Planning Application Boundary
- S278 Works Boundary

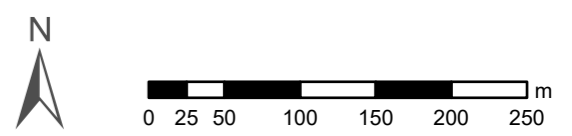


Project Details	WIE18671-105: Stag Brewery
Figure Title	Figure 1: Site Location
Figure Ref	WIE18671-105-GIS-HER-1A
Date	January 2022
File Location	\\s-incswiel\projects\wie18671\105\gis\her

Contains OS data © Crown Copyright and database right 2020
Contains data from OS Zoomstack

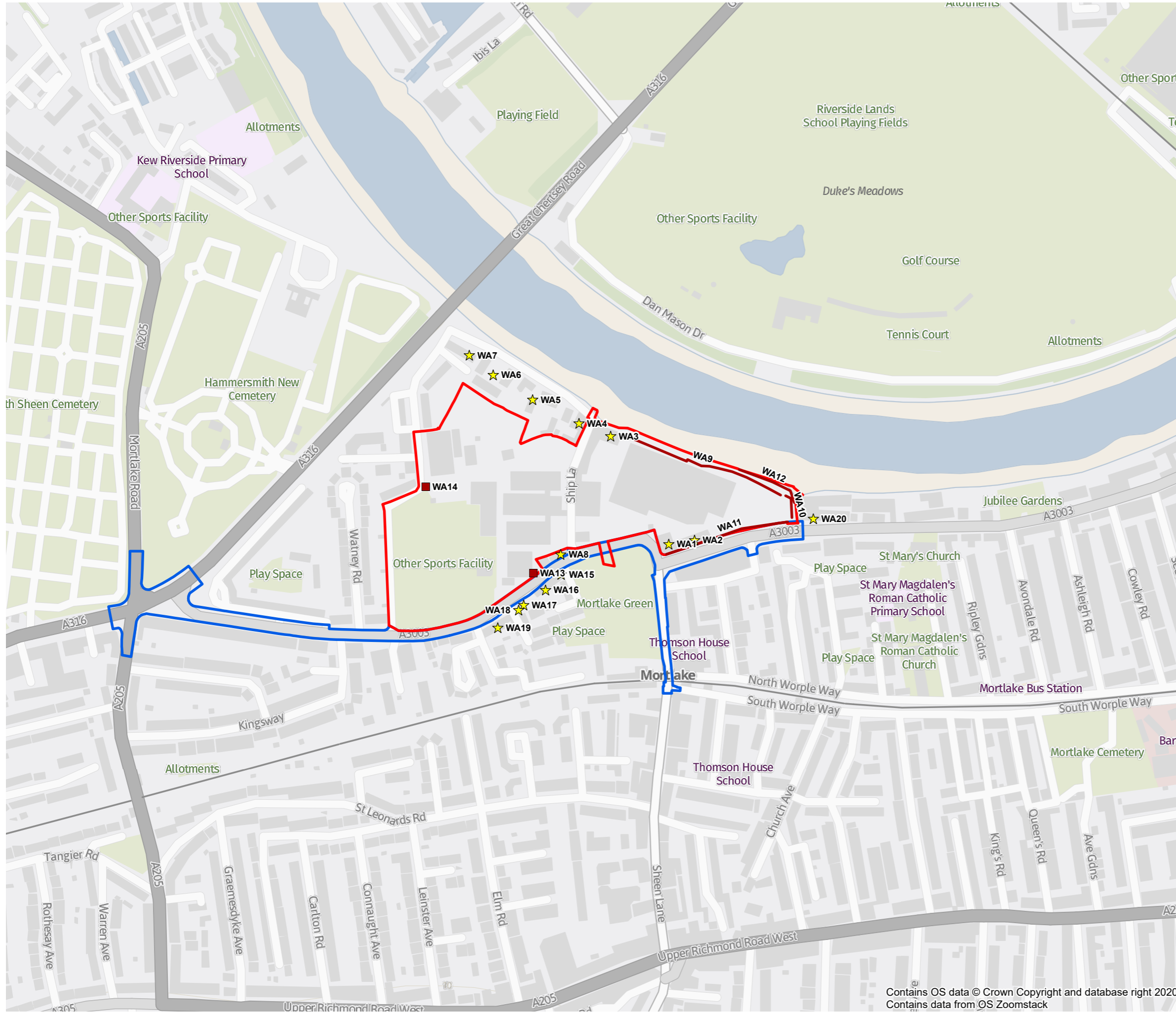


- Planning Application Boundary
- S278 Works Boundary
- ▲ Listed Buildings
- Conservation Areas**
- Cowley Road
- Grove Park
- Holmesdale Avenue
- Model Cottages
- Mortlake
- Mortlake Green
- Queen's Road (Mortlake)
- Sheen Lane (Mortlake)

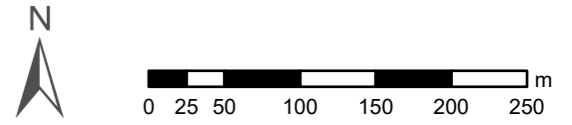


Project Details	WIE18671-105: Stag Brewery
Figure Title	Figure 2: Listed Buildings and Conservation Areas
Figure Ref	WIE18671-105-GIS-HER-2A
Date	January 2022
File Location	\\s-incswiel\projects\wie18671\105\gis\her

Contains OS data © Crown Copyright and database right 2020
 Contains data from OS Zoomstack



- Planning Application Boundary
- S278 Works Boundary
- ★ Buildings of Townscape Merit
- Non-Designated Heritage Asset
- Non-Designated Heritage Asset



Project Details	WIE18671-105: Stag Brewery
Figure Title	Figure 3: Buildings of Townscape Merit and Non-Designated Built Heritage Assets
Figure Ref	WIE18671-105-GIS-HER-3A
Date	January 2022
File Location	\\s-incswiel\projects\wie18671\105\gis\her

Contains OS data © Crown Copyright and database right 2020
 Contains data from OS Zoomstack

B. Historic Environment Gazetteer

Designated Heritage Assets (within 500m of the Site)

National Heritage List Entry No.	Name	Grade	Description	Significance
1390737 and 1031877	Chiswick Bridge and Attached Balustrades	II	<p>Arched road bridge, 1930-33. Engineer Alfred Dryland with Herbert Baker as consulting architect, and giving the bridge its distinctly Georgian character. Mass concrete footings and abutments; reinforced concrete arches of cellular construction; cladding of Portland stone. Like Twickenham Bridge it is 70 ft. wide between the parapets; three spans, the centre being 150 ft. and the shore arches 125 ft.; one c60 ft. roadway arch on each bank. Pedestrian access to broad pavement by handsome brick stairs; riverside walkway spanned by arches which on the Hounslow side provide storage for boat club. On line of piers a polygonal viewing platform has been provided to each side. The centre span is the longest concrete arch of any bridge spanning the Thames.</p>	Medium

Appendices

Former Stag Brewery, Mortlake

Project Number: WIE18671

Document Reference: WIE18671-100-R-9-2-2

National Heritage List Entry No.	Name	Grade	Description	Significance
1065392	Mausoleum of Sir Richard and Lady Burton, Churchyard of St Mary Magdalen	II*	c. 1890. Mausoleum in the shape of a Bedouin tent made of Carrara marble and Forest of Dean stone, 12 feet square and 18 feet high. The roof has a gilt tailed 9 point star, the pediment was enriched with stars and crescents, and the rear originally had a stained glass panel showing the Burton monogram, now replaced in clear glass. Entrance, now blocked, has a crucifix above. Door has inscription "To Sir Richard Francis Burton 1821-1890 and Isabel d.1896". Beneath is a poem by Justin Huntly McCarthy. Interior, visible through rear glass panel contains above ground ornate tapering coffin with extensive gilt enrichment for Sir Richard Burton, with crucifix and camel bells. There is a more conventional mahogany coffin for Lady Burton. Painted roof representing the heavens with stars and seraphim and strings of camel bells. Shrine to rear wall and religious paintings of Christ with Magdalene and Crucifixion to sides and Arabic lamps on floor. This burial was a response to Sir Richard Burton's horror of darkness. An extra ordinary mixture of chapelle ardente and Bedouin tent.	High
1065426	Acacia House	II	Late C18, 3-storey house. Four windows wide. Brown brick with red brick window heads. Door, approached with flight of steps, has wood doorcase with console-bracketed cornice hood. Interior not seen.	Medium
1065427	117, High Street SW14	II	Late C18, 2-storey house. Five window bays wide. Parapeted brick front with rendered ground floor. Tiled gambrel roof with 3 dormers. Early C19 doorcase with reeded architrave and rosette stops. To the left a C19 bay window. River elevation irregular, with large 3-storey, 3-bay bow with early C19 cast-iron balcony with tented lead canopy. Interior not seen.	Medium

Appendices

Former Stag Brewery, Mortlake

Project Number: WIE18671

Document Reference: WIE18671-100-R-9-2-2

National Heritage List Entry No.	Name	Grade	Description	Significance
1065428	Limes House and Forecourt Piers	II*	Circa 1720 with a front probably circa 1770. Two storeys, hipped slated gambrel roof with three dormers. Five windows wide with centre bay shallow projection. Central Roman Doric pedimented portico with triglyph frieze and paired columns. Later full height wings to either side without attic. Riverfront similar with similar porch. Interior has spacious entrance hall with good doorcases and staircase of circa 1720-40. There is a painting of the house by J M W Turner in the Frick collection, New York and National Gallery, Washington.	High
1252970	Tudor Lodge	II	C18, 2-storey house, 2 windows wide. Brick built with mansard roof having C19 ornamental ridge tiles and dormers. Later canted bay to left ground floor. Entrance to right. Molded flush-framed sashes with glazing bars above.	Medium
1252971	Thames Bank House	II	C18. Cement faced. Two storeys, 4 round-headed sash windows to floor level. Early C19 cast-iron first floor balcony with lead verandah, parapet. At the rear, an earlier C18 square brick mansion of 3 storeys with segmental sash windows.	Medium
1252972	Leyden House	II	C18. Brick rendered. Steeply pitched roof with casement dormers behind parapet. Two storeys, 5 bays wide, the central (entrance) bay with canted, 2-storey bar. Band course to canted bar between ground and first floor and above first floor windows. Entrance doorway semi-circular headed.	Medium
1253022	44 and 46, Victoria Road	II	Probably 1870s. Pair of cottages. In situ mass concrete, using method resembling that of Joseph Tall, pioneer of concrete shuttering. Stuccoed. Original flat concrete roof to parapet. Each 2 storeys, 2 windows wide. The outer bay of each cottage recessed with entrance. Advanced bay of each cottage has corniced polygonal bow window. Square headed windows and doors with stucco keystones and moulded architraves to upper windows. Sash windows with original glazing bars. Cornice to parapet. Internally concrete floors and stairs. Shallow segmental barrel to entrance ceiling. "Concrete" December 1977.	Medium

Appendices

Former Stag Brewery, Mortlake

Project Number: WIE18671

Document Reference: WIE18671-100-R-9-2-2

National Heritage List Entry No.	Name	Grade	Description	Significance
1254107	Riverside House	II	Detached house. Circa early C18, extended C19 and altered C20. Rendered brick. Slate to front pitch of roof, falling to parapet; steeper concrete tiled roof to rear. 3 storeys to front facade; 2 storeys plus dormers to rear. 5 main bays. Slightly projecting centre of 3 bays, C20, with entrance, Square headed windows (first floor outer windows formerly arched). Raised bands between storeys. Interior contains two well preserved early C18 rooms, sited on ground floor (east of centre on the ground floor), both retaining their panelling, fireplaces and cornices etc.	Medium
1254175	28, Sheen Lane	II	House. Early C18; refronted c1850. Brick, with stucco front of c1830; roughcast to rear; brick-coped gambrel roof, with Welsh slates to front and concrete tiles to rear; brick right end stack; and rear stack to outshut. 2-unit plan with rear outshut. 2 storeys and attic; one window range. C20 shop front. c1830 tripartite sash with glazing bars (removed from centre) to first floor. C19 flat-roofed dormer with C20 casements. Facade is flanked by raised pilasters and has bracketed eaves. Side walls have large semi-circular arched recesses, with two early C18 twelve-pane sashes to left and one to right, all with original thick glazing bars. Interior: early C18 open-well staircase with winders, stick balusters and wreathed mahogany handrail. First floor has early C19 marble fireplace and horizontally-sliding window shutters to first floor. Early C19 panelled doors.	Medium
1261445	Garden Wall to East of Number 1 To 8 Riverside House and Extending Behind Numbers 1 To 24 Reid Court	II	Garden wall. Circa early C18. Red brick Approximately 12 ft. high ramping down to approx 4 ft. in front of Riverside House. Included for group value only.	Medium
1261996	Thames Cottage	II	C18. Stucco with old tile roof rising to a point. Three sash windows wide, with projecting central porch with modern cornice and consoles to canopy. Later triple dormer, replacing 2 original hipped casement dormers. Segmental heads to ground storey windows.	Medium

Appendices

Former Stag Brewery, Mortlake

Project Number: WIE18671

Document Reference: WIE18671-100-R-9-2-2

National Heritage List Entry No.	Name	Grade	Description	Significance
1286039	Suthrey House with Attached Railings	II	C18. L-shaped with right end to street and small courtyard entrance with C18 railings. Two storeys, stock brick with red dressings to main fronts. Three blank windows to road, 4 flush-framed windows to courtyard. River front is 2-storeys, 6 window bays wide. Central pilastered doorcase. Tiled roof behind parapet. Interior not seen.	Medium
1357705	Parish Church of St Mary	II*	Founded 1348 on a site to west of present church, which dates from 1543. The tower is of that date. The building was enlarged in 1725 and 1845. The chancel is of 1885, the nave and south aisle of 1906 by Sir A Blomfield. Vestry House, adjoining, of 1660-70 possibly with some earlier work. Western tower has 4 stages with later cupola. Chequer work of stone and flint to third storey. Tudor brick with stone dressings above. Polygonal stair turret to north-east corner. North aisle of church brick. Rest now rubblestone, late C19 and C20. Perpendicular style clerestory. Low pitched lead roof. Chancel lower than nave Vestry House, adjoining north aisle towards west: a red brick building of 2 storeys. Slate hipped roof. Two windows wide. Upper windows square headed, 2-light with timber mullions and transom. One similar window to left below, but set in chanfered stone recess with segmental relieving arch set in brickwork above. Right-hand lower window retains 2 chanfered mullions.	High
1395422	Air Raid Shelter	II	Air raid shelter, built in 1939 and extended in late 1940- early 1941, to serve St Leonard's Court which was built in 1934-38 by local builder Mr F.G Fox. Designed to hold forty-eight people, at the time there were eighty-three flats.	Medium

Appendices

Former Stag Brewery, Mortlake

Project Number: WIE18671

Document Reference: WIE18671-100-R-9-2-2

National Heritage List Entry No.	Name	Grade	Description	Significance
1400834	Mortlake Crematorium	II	Mortlake Crematorium was a joint municipal venture, undertaken by the boroughs of Hammersmith, Richmond, Barnes and Acton, and set up under an Act of 1936. Designed by F. Douglas Barton, borough surveyor to Hammersmith, it was opened in January 1939 by the most prominent doctor of the day, Lord Horder. Centrally planned, with an axial chapel with oven chamber behind, flanked to the front by offices and reception rooms; behind are cloistered walks. A tower is attached to the south-east of the central range.	Medium
1400837	Hammersmith Memorial to World War II Civilian Dead, Mortlake Cemetery	II	This memorial marks the mass grave of 156 of the 485 civilian victims of German attack, the others being buried in private graves elsewhere. It forms an interesting counterpoint to the Imperial War Graves Commission cross of sacrifice, honouring military interments, which is situated just to the south. This is one of a number of comparable municipal memorials in cemeteries marking such civilian graves notable from the Second World War, and possesses considerable community interest. It is also an elegant, and characteristically restrained, example of a post-war public cemetery memorial.	Medium
1417979	Gateway, formerly to Cromwell House	II	Gate piers and foot-gate of c.1700 (piers) and early/mid C18 (gate); architect not known. Bath stone piers with wrought-iron gate and surrounding panels. The gateway was previously located on the Cromwell Lane frontage of the site of Cromwell House. This, originally the Thames-side manor house of Mortlake, was held from 1536-40 by Thomas Cromwell (d.1540, Earl of Essex and Henry VIII's Chancellor). That house was rebuilt soon after 1700, with this gateway giving access to a small forecourt between forward-projecting wings. That building was in turn demolished in 1857-8. The gateway, however, remained in situ until the land was redeveloped for a large brewery in the early 1960s. In 1962 the gateway was taken down and re-erected nearby at the head of the northward run of Williams Lane, where it served as the foot-gate to a company bowling green, today a sports ground.	Medium

Appendices

Former Stag Brewery, Mortlake

Project Number: WIE18671

Document Reference: WIE18671-100-R-9-2-2

Non-Designated Built Heritage Assets

Waterman ID	Name	Description	Significance
WA1	The Former Hotel Building	Building of Townscape Merit. Late 19th century, three-storey building. It is located on the corner of Mortlake High Street and Lower Richmond Road, adjacent and connected to the former Bottling building that fronts the High Street. The former Hotel's frontage follows the curve of the bend in the road between the High Street and Lower Richmond Road	Low
WA2	The Former Bottling Building	Building of Townscape Merit. former Bottling building, built mid-19th century. The principal elevation terminates at a parapet of varying heights and contains two decorative roundels / medallions and the large carved "Mortlake Brewery 1869" sign between them.	Low
WA3	The Maltings Building	Building of Townscape Merit. Early 20th century former Maltings building, 8-9 storeys in height.	Low
WA4	The Ship Public House	Building of Townscape Merit. Mid-19th century public house.	Low
WA5	The Old Stables	Building of Townscape Merit. 19th century stable block.	Low
WA6	1-14 Parliament Mews	Building of Townscape Merit. 1-14 Parliament Mews is a modern group of apartments built in 1992, designed in a Neo-Georgian style.	Neutral
WA7	6 and 7 Thames Bank	Building of Townscape Merit. 19th century residential building.	Low
WA8	The Jolly Gardeners Public House	Building of Townscape Merit. Mid-19th century public house.	Low
WA9	Northern Boundary Wall	Boundary wall forming part of the northern boundary of the Brewery Site, along the River Thames. It comprises a mix of former 19th century buildings and later additions.	Neutral / Low
WA10	Eastern Boundary Wall	The boundary wall on the eastern side of the Site comprises two sections of wall that run along Bulls Alley between Mortlake High Street and the bank of the Thames. These were constructed using London stock brick and comprehensively rebuilt during the 20th century, including the incorporation of a flood defence wall and pedestrian steps in the alley itself.	Neutral
WA11	Southern Boundary Wall	Boundary wall extending along Mortlake High Street. 19th century date.	Low

Appendices

Former Stag Brewery, Mortlake

Project Number: WIE18671

Document Reference: WIE18671-100-R-9-2-2

Waterman ID	Name	Description	Significance
WA12	Railway Tracks, Granite Paving and River Moorings	Sections of surviving historic railway tracks, granite paving setts and timber river moorings associated with the Stag Brewery Site.	Low
WA13	Memorials	Two memorial plaques. The larger of the two is a War Memorial commemorating members of staff from the original Watney's Stag Brewery in Victoria who died between 1914-18, and 1939-45. The second commemorates the death of two engineers from the brewery who died attempting to rescue another during a fire in 1975.	Low
WA14	Historic Gates	Two sets of cast metal historic Watney's Brewery gates.	Low
WA15	The Tapestry Public House	Building of Townscape Merit. Late 19th century public house.	Low
WA16	3 to 9 Lower Richmond Road	Buildings of Townscape Merit. Late 19 century date residential properties.	Low
WA17	33 Lower Richmond Road	Building of Townscape Merit. Late 19 century date residential property.	Low
WA18	35 Lower Richmond Road	Building of Townscape Merit. Late 19 century date residential property.	Low
WA19	37 to 51 Lower Richmond Road	Buildings of Townscape Merit. Late 19 century date residential properties.	Low
WA20	61-69 Mortlake High Street	Building of Townscape Merit. Site of former 18th century Maltings, extensively redeveloped in the 1990s.	Low

Appendices

Former Stag Brewery, Mortlake

Project Number: WIE18671

Document Reference: WIE18671-100-R-9-2-2

C. Legislation and Policy

Legislation, Policy & Guidance	Document	Section/Policy
Legislation	Ancient Monuments and Archaeological Areas Act 1979	Under the Ancient Monuments and Archaeological Areas Act 1979, the Secretary of State (Department of Culture, Media and Sport (DCMS)) can schedule any site which appears to be of national importance because of its historic, architectural, traditional, artistic or archaeological interest. Additional controls are placed upon works affecting Scheduled Monuments and Areas of Archaeological Importance under the Act. The consent of the DCMS, as advised by Historic England, is required for certain works affecting Scheduled Monuments.
Legislation	Planning (Listed Buildings and Conservation Areas Act) 1990	In England, under Section 1 of the Planning (Listed Buildings and Conservation Areas) Act 1990, the Secretary of State (Department of Culture, Media and Sport (DCMS)) is required to compile lists of buildings of special architectural or historic interest, on advice from Historic England. Works affecting Listed Buildings are subject to additional planning controls administered by Local Planning Authorities. Historic England are a statutory consultee in certain works affecting Listed Buildings. Under certain circumstances, Listed Building Consent is required for works affecting Listed Buildings.
National Planning Policy	Department for Levelling Up, Housing and Communities, 2021, National Planning Policy Framework, 2021	Section 16 of the National Planning Policy Framework (NPPF) sets out the Core Planning Principles of which 'Conserving and Enhancing the Historic Environment' is one. NPPF determines that heritage assets should be afforded proportionate weight to their significance when determining acceptable impacts on the asset or its setting. Developments affecting heritage assets are required to submit a statement describing the significance and any contribution of the assets setting. Any impact on a heritage asset should be weighed against public benefits of the proposal.
Local Policy	London Borough of Richmond upon Thames, Local Plan: adopted 2018 and 2020	Policy LP3: Designated Heritage Asset A. The Council will require development to conserve and, where possible, take opportunities to make a positive contribution to, the historic environment of the borough. Development proposals likely to adversely affect the significance of heritage assets will be assessed against the requirement to seek to avoid harm and the justification for the proposal. The significance (including the settings) of the borough's designated heritage assets, encompassing Conservation Areas, listed buildings, Scheduled Monuments as well as the Registered Historic Parks and Gardens, will be conserved and enhanced by the following means: 1. Give great weight to the conservation of the heritage asset when considering the impact of a proposed development on the significance of the asset. 2. Resist the demolition in whole, or in part, of listed building. Consent for demolition of Grade II listed buildings will only be granted in exceptional circumstances and for Grade II* and Grade I listed buildings in wholly exceptional circumstances following a

Appendices

Legislation, Policy & Guidance	Document	Section/Policy
		<p>thorough assessment of the justification for the proposal and the significance of the asset.</p> <p>3. Resist the change of use of listed buildings where their significance would be harmed, particularly where the current use contributes to the character of the surrounding area and to its sense of place.</p> <p>4. Require the retention and preservation of the original structure, layout, architectural features, materials as well as later features of interest within listed buildings, and resist the removal or modification of features that are both internally and externally of architectural importance or that contribute to the significance of the asset.</p> <p>5. Demolitions (in whole or in part), alterations, extensions and any other modifications to listed buildings should be based on an accurate understanding of the significance of the heritage asset.</p> <p>6. Require, where appropriate, the reinstatement of internal and external features of special architectural or historic significance within listed buildings, and the removal of internal and external features that harm the significance of the asset, commensurate with the extent of proposed development.</p> <p>7. Require the use of appropriate materials and techniques and strongly encourage any works or repairs to a designated heritage asset to be carried out in a correct, scholarly manner by appropriate specialists.</p> <p>8. Protect and enhance the borough's registered Historic Parks and Gardens by ensuring that proposals do not have an adverse effect on their significance, including their setting and/or views to and from the registered landscape.</p> <p>9. Protect Scheduled Monuments by ensuring proposals do not have an adverse impact on their significance.</p> <p>B. Resist substantial demolition in Conservation Areas and any changes that could harm heritage assets, unless it can be demonstrated that:</p> <ol style="list-style-type: none"> 1. in the case of substantial harm or loss to the significance of the heritage asset, it is necessary to achieve substantial public benefits that outweigh that harm or loss; 2. in the case of less than substantial harm to the significance of the heritage asset, that the public benefits, including securing the optimum viable use, outweigh that harm; or 3. the building or part of the building or structure makes no positive contribution to the character or distinctiveness of the area. <p>C. All proposals in Conservation Areas are required to preserve and, where possible, enhance the character or the appearance of the Conservation Area.</p> <p>D. Where there is evidence of intentional damage or deliberate neglect to a designated heritage asset, its current condition will not be taken into account in the decision-making process.</p>

Appendices

Legislation, Policy & Guidance	Document	Section/Policy
		<p>E. Outline planning applications will not be accepted in Conservation Areas. The Council's Conservation Area Statements, and where available Conservation Area Studies, and/or Management Plans, will be used as a basis for assessing development proposals within, or where it would affect the setting of, Conservation Areas, together with other policy guidance, such as Village Planning Guidance SPDs.</p>
		<p>LP 4: Non-Designated Heritage Assets</p> <p>The Council will seek to preserve, and where possible enhance, the significance, character and setting of non-designated heritage assets, including Buildings of Townscape Merit, memorials, particularly war memorials, and other local historic features. There will be a presumption against the demolition of Buildings of Townscape Merit</p>
		<p>LP 5: Views and Vistas</p> <p>The Council will protect the quality of the views, vistas, gaps and the skyline, all of which contribute significantly to the character, distinctiveness and quality of the local and wider area, by the following means:</p> <ol style="list-style-type: none"> 1. protect the quality of the views and vistas as identified on the Policies Map, and demonstrate such through computer-generated imagery (CGI) and visual impact assessments; 2. resist development which interrupts, disrupts or detracts from strategic and local vistas, views, gaps and the skyline; 3. require developments whose visual impacts extend beyond that of the immediate street to demonstrate how views are protected or enhanced; 4. require development to respect the setting of a landmark, taking care not to create intrusive elements in its foreground, middle ground or background; 5. seek improvements to views, vistas, gaps and the skyline, particularly where views or vistas have been obscured; 6. seek improvements to views within Conservation Areas, which: <ol style="list-style-type: none"> a. are identified in Conservation Area Statements and Studies and Village Plans; b. are within, into, and out of Conservation Areas; c. are affected by development on sites within the setting of, or adjacent to, Conservation Areas and listed buildings.
Local Policy	Mortlake Village Planning Guidance, Supplementary Planning Document, December 2015	<p>The purpose of the Village Planning Guidance Supplementary Planning Document (SPD) is primarily to establish a vision and planning policy aims for, and assist in defining, maintaining and enhancing the character of Mortlake Village, and to provide guidance in this regard. The SPD forms part of the wider Village Plan. By identifying key features of the village, the SPD clarifies the most important aspects and features that contribute to local character to guide those seeking to make changes to their properties or to develop new properties in the area, as well as being a material consideration in determining planning applications</p>
Local Policy	London Plan, March	Policy HC1 Heritage Conservation and Growth

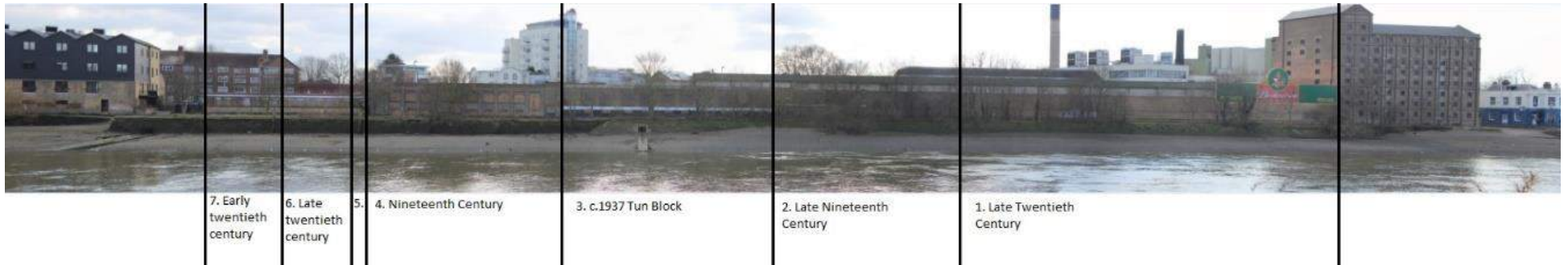
Appendices

Legislation, Policy & Guidance	Document	Section/Policy
2021		<p>A. Boroughs should, in consultation with Historic England, local communities and other statutory and relevant organisations, develop evidence that demonstrates a clear understanding of London’s historic environment. This evidence should be used for identifying, understanding, conserving, and enhancing the historic environment and heritage assets, and improving access to, and interpretation of, the heritage assets, landscapes and archaeology within their area.</p> <p>B Development Plans and strategies should demonstrate a clear understanding of the historic environment and the heritage values of sites or areas and their relationship with their surroundings. This knowledge should be used to inform the effective integration of London’s heritage in regenerative change by:</p> <ol style="list-style-type: none">1) setting out a clear vision that recognises and embeds the role of heritage in place-making2) utilising the heritage significance of a site or area in the planning and design process3) integrating the conservation and enhancement of heritage assets and their settings with innovative and creative contextual architectural responses that contribute to their significance and sense of place4) delivering positive benefits that conserve and enhance the historic environment, as well as contributing to the economic viability, accessibility and environmental quality of a place, and to social wellbeing. <p>C Development proposals affecting heritage assets, and their settings, should conserve their significance, by being sympathetic to the assets’ significance and appreciation within their surroundings. The cumulative impacts of incremental change from development on heritage assets and their settings should also be actively managed. Development proposals should avoid harm and identify enhancement opportunities by integrating heritage considerations early on in the design process.</p> <p>D Development proposals should identify assets of archaeological significance and use this information to avoid harm or minimise it through design and appropriate mitigation. Where applicable, development should make provision for the protection of significant archaeological assets and landscapes. The protection of undesignated heritage assets of archaeological interest equivalent to a scheduled monument should be given equivalent weight to designated heritage assets.</p> <p>E Where heritage assets have been identified as being At Risk, boroughs should identify specific opportunities for them to contribute to regeneration and place-making, and they should set out strategies for their repair and re-use.</p>

Appendices

D. Boundary Wall Montages

Northern Boundary Wall Montage



Appendices

Former Stag Brewery, Mortlake

Project Number: WIE18671

Document Reference: WIE18671-100-R-9-2-2

Southern Boundary Wall Montage



1. Nineteenth century

2. Nineteenth, rebuilt in twentieth century

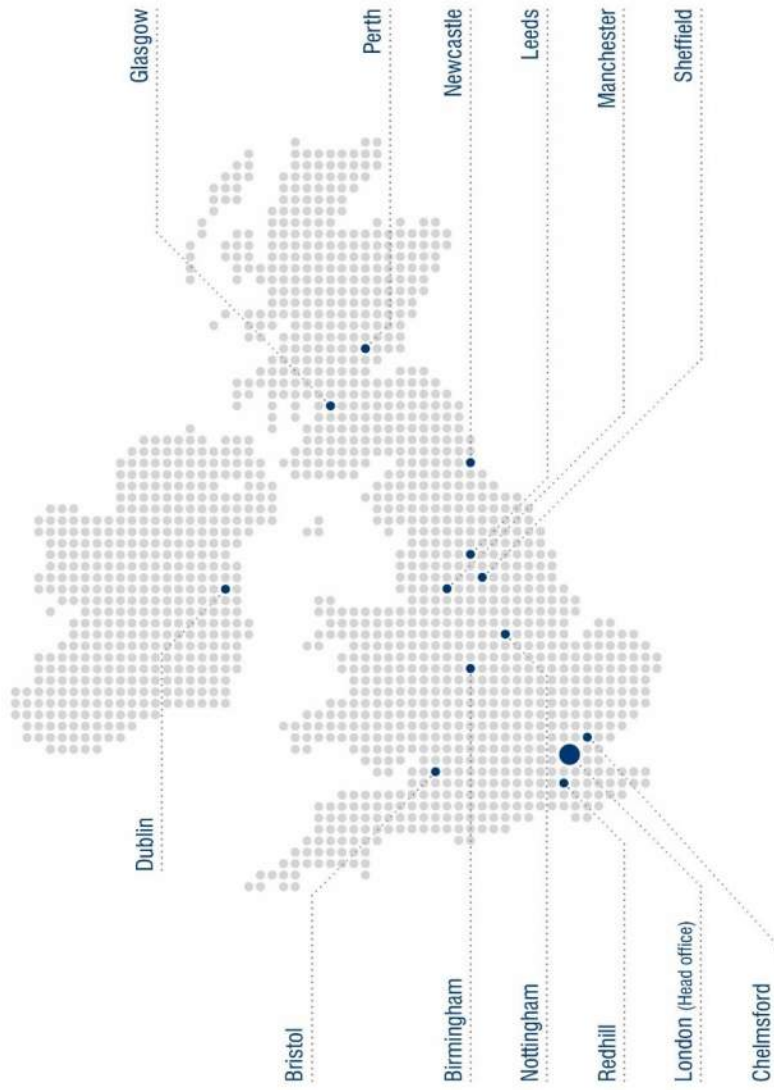
Appendices

Former Stag Brewery, Mortlake

Project Number: WIE18671

Document Reference: WIE18671-100-R-9-2-2

UK and Ireland Office Locations



PCA HERITAGE

12. APPENDIX 3: WIREFRAME VISUALISATIONS OF THE PROPOSED TEMPORARY DEVELOPMENT



Proposed temporary development

Proposed temporary development





Proposed temporary development



Proposed temporary development



Proposed temporary development