

Evacuation lift

Refuge Point with EVC
(emergency voice communication)

Population limited to 60 persons across floor based on 1 escape route (stair)

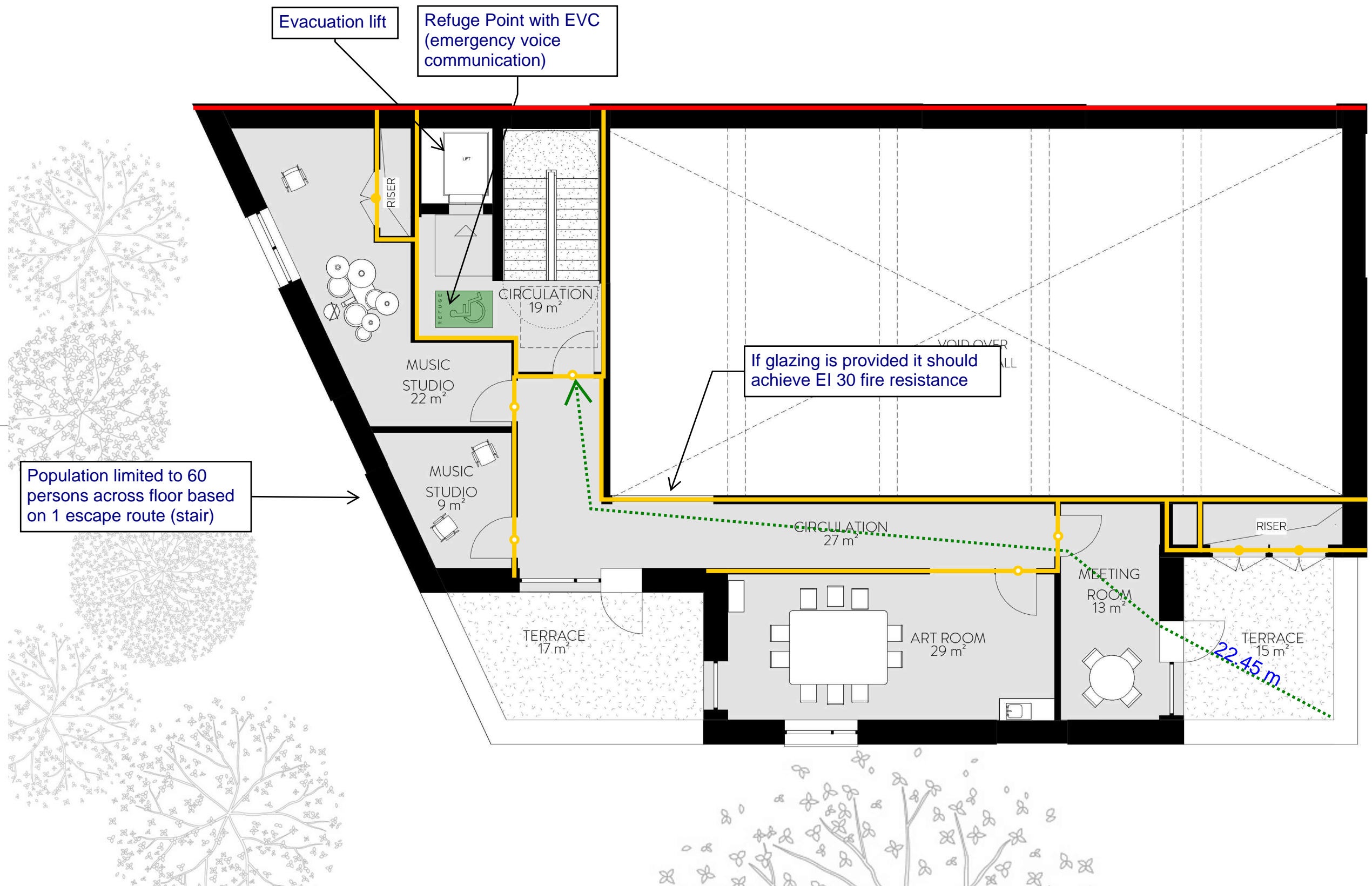
If glazing is provided it should achieve EI 30 fire resistance

21.58m

Project Name:		Ham Close Community Centre					
Drawing Name:		First Floor					
Drawing Reference:		AFF_20700_01_Ham Close, Richmond - Non-Residential Buildings_FSD_02					
Date:	07/04/2022	Drawn By	Am	Checked By	ED	Approved By	JO

Legend:		
Alternative Exit	FD30 Door	FD30S Door
FD60 Door	FD60S Door	30/30/30 FRR
FD90 Door	FD90S Door	60/60/60 FRR
FD120 Door	FD120S Door	90/90/90 FRR
		120/120/120 FRR

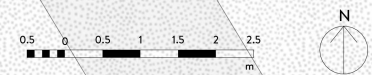
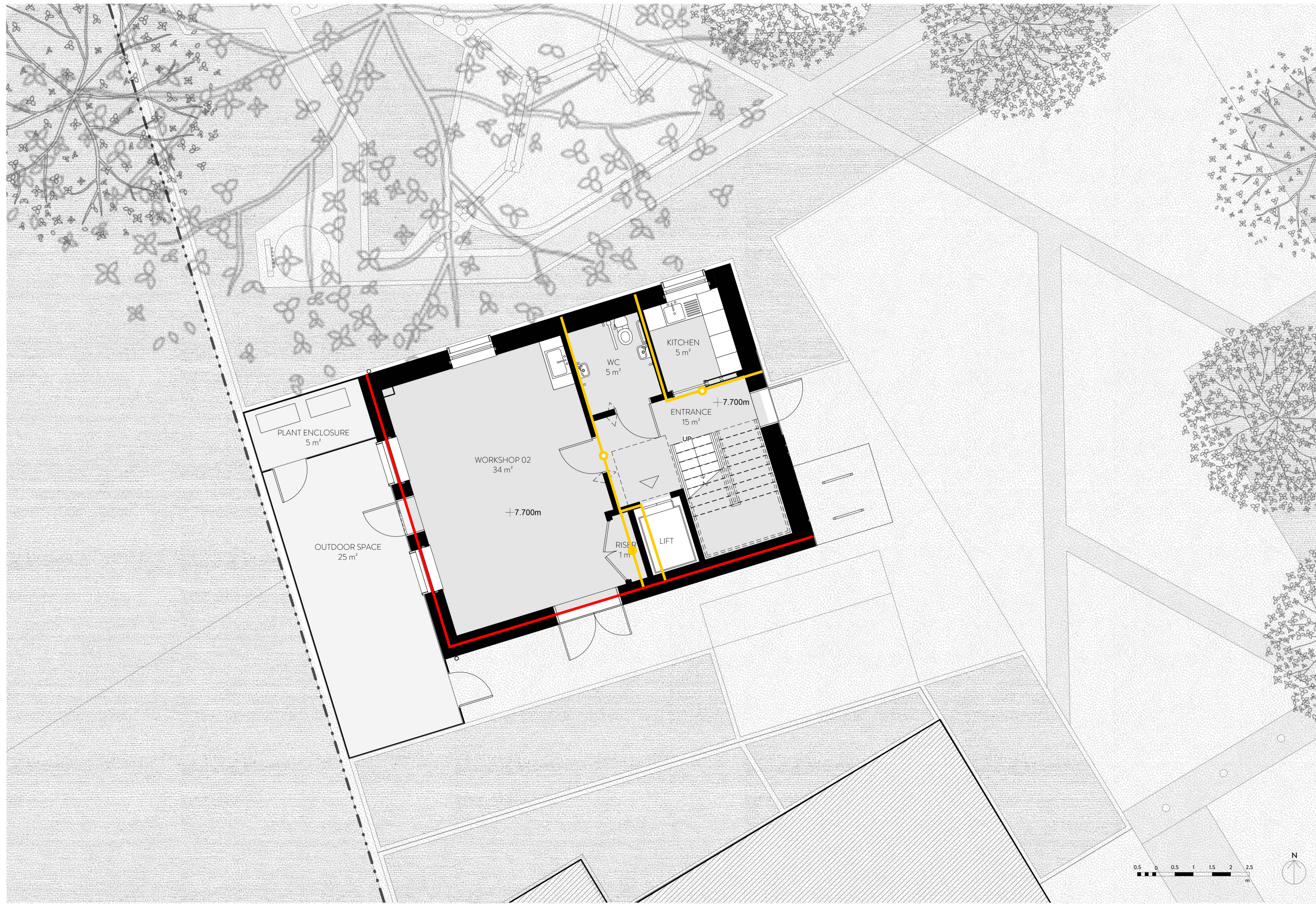




Project Name:		Ham Close Community Centre					
Drawing Name:		Second Floor					
Drawing Reference:		AFF_20700_01_Ham Close, Richmond - Non-Residential Buildings_FSD_02					
Date:	07/04/2022	Drawn By	Am	Checked By	ED	Approved By	JO

Legend:		
Alternative Exit	FD30 Door	FD30S Door
FD60 Door	FD60S Door	30/30/30 FRR
FD90 Door	FD90S Door	60/60/60 FRR
FD120 Door	FD120S Door	90/90/90 FRR
		120/120/120 FRR

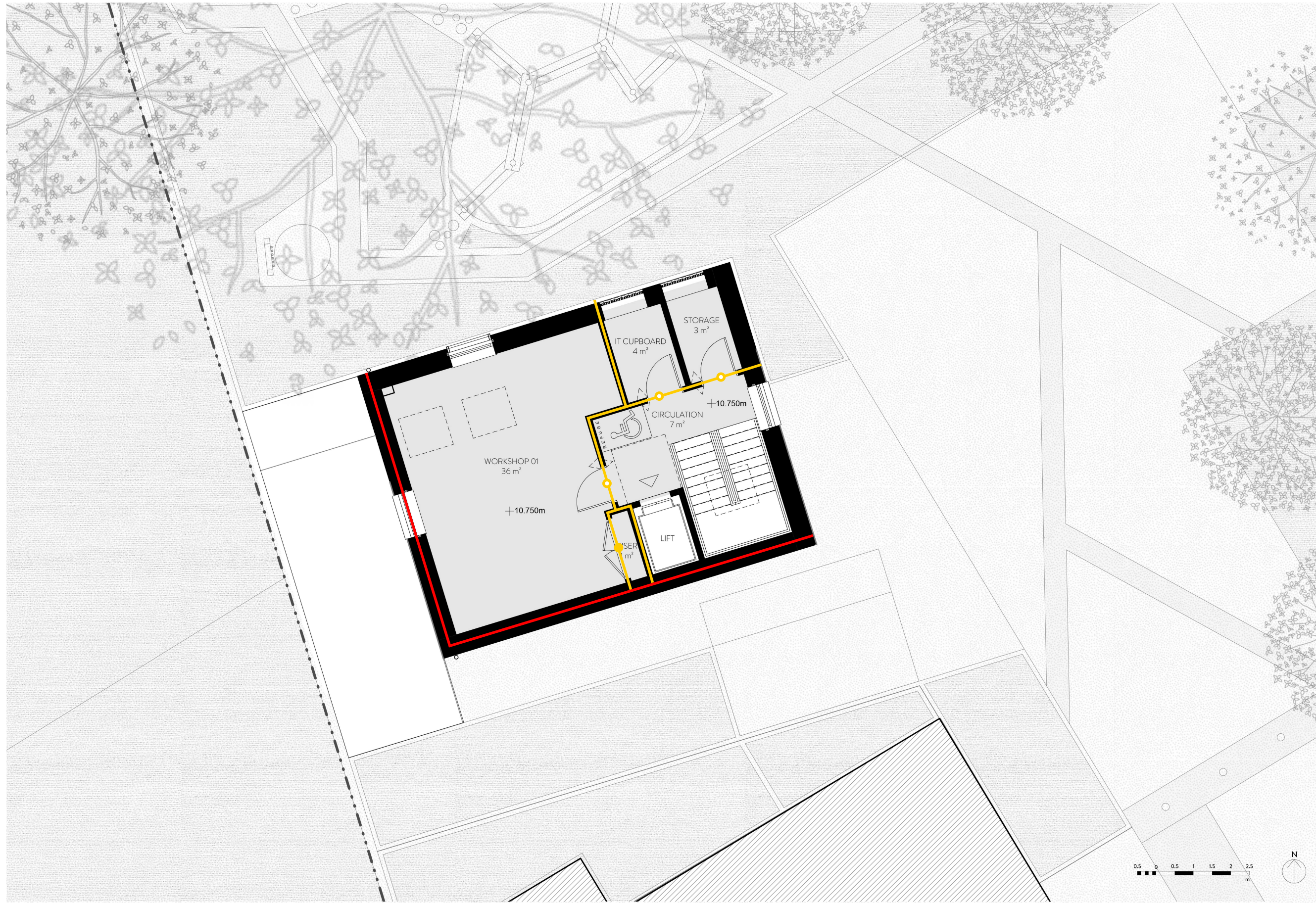
AFFINITY
FIRE ENGINEERING



Project Name:		Ham Close Richmond MakerLabs					
Drawing Name:		Ground Floor					
Drawing Reference:		AFF_20700_01_Ham Close, Richmond - Non-Residential Buildings_FSD_02					
Date:	07/04/2022	Drawn By	Am	Checked By	ED	Approved By	JO

Legend:		
Alternative Exit	FD30 Door	FD30S Door
FD60 Door	FD60S Door	FD90S Door
FD90 Door	FD90S Door	FD120S Door
FD120 Door	FD120S Door	
30/30/30 FRR	60/60/60 FRR	90/90/90 FRR
	120/120/120 FRR	





Project Name:		Ham Close Richmond MakerLabs					
Drawing Name:		First Floor					
Drawing Reference:		AFF_20700_01_Ham Close, Richmond - Non-Residential Buildings_FSD_02					
Date:	07/04/2022	Drawn By	Am	Checked By	ED	Approved By	JO

Legend:		
Alternative Exit	FD30 Door	FD30S Door
FD60 Door	FD60S Door	FD90S Door
FD90 Door	FD90S Door	FD120S Door
FD120 Door		
30/30/30 FRR	60/60/60 FRR	90/90/90 FRR
	120/120/120 FRR	



APPENDIX 3. QUALIFICATIONS

Aidan McCready Fire Engineer

Profession: Fire Engineer

Qualifications: BEng (Hons) Fire Safety Engineering
Associate Member Institution of Fire Engineers (AIFireE)
Member Engineers Ireland (MIEI)

Experience:

Company	Position	Date
Affinity Fire Engineering (UK/IRELAND)	Fire Engineer	July 2022 – Present
Affinity Fire Engineering (UK)	Graduate Fire Engineer	July 2020 – July 2022

Expertise

Having completed a BEng (Hons) Fire Safety Engineering, Aidan joined Affinity as a Graduate Fire Engineer. Since joining the company, Aidan has progressed into the Fire Engineer role and has been able to gain experience working as project engineer on a wide range of projects.

Aidan has gained experience in developing and presenting Fire Strategies and Fire Risk Assessments across a range of building types. He is developing a diverse range of fire safety designs with a strong understanding of statutory guidance and legislation, whilst also engaging in fire engineered solutions.

Summary of Experience

Mixed-use Developments:

- Teviot Estate, London.
- Meadows Community Centre, Retail and Residential, Cambridge

Retail:

- Harrods, London
- Commercial Units A & B, Dartmouth.
- COOP Convenience Stores, UK.

Residential:

- Fosters Estate, London.
- Marleigh Phase 2, London
- Hoddesdon, High leigh
- Westhorpe Gardens, London

Fire Risk Assessment:

- Fredrick Street, Dublin
- North Circular Road, Dublin

Office:

- Charlotte Street, London
- Liberty Place, London
- Hans Road, London
- Devonshire House, London

Educational:

- Princethorpe College, Princethorpe, Warwickshire
- Queen Mary University London

Industrial:

- Segro Park, Dagenham

Health Care/Research:

- Chiltern Vale Health & Care Hub, Dunstable
- University of Cambridge Cancer research Centre, Cambridge
- NSAI National laboratory, Dublin

Travel:

- Dublin Airport, Dublin

Hotel/Assembly:

- Philips Hotel, Dartmouth
- Bar Italia, Dublin
- Avalon House, Dublin

Affinity Fire Engineering UK Ltd
120 Aldergate Street, London, EC1A 4JQ
+44 (0) 20 3384 0050, enquiries@affinity-fire.com

Evan Doherty

Senior Fire Engineer

Profession: Fire Safety Engineer

Qualifications: BEng (Hons) Fire Safety Engineering
Associate Member Institution of Fire Engineers (AIFireE)



Experience:

Company	Position	Date
Affinity Fire Engineering (UK)	Senior Fire Engineer	Aug 2018 – Present

Expertise

Having completed a BEng (Hons) in Fire Safety Engineering, Evan joined Affinity as a Graduate Fire Engineering Consultant. Since joining the company, Evan has progressed into the Fire Engineer role and is working as Project Coordinator on a number of projects.

Evan has gained experience in developing and presenting Fire Strategies, Fire Risk Assessments and Site Inspection Reports across a range of building types. He is developing a diverse range of fire safety designs with a strong understanding of statutory guidance and legislation, whilst also engaging in fire engineered solutions using qualitative and quantitative techniques including computational smoke modelling.

Summary of Experience

Mixed-use Developments:

- 201 – 203 Hackney Road, London
- Harrods Thames Valley Distribution Centre, Thatcham
- Kensal Road, London

Residential:

- Cromwell Road, Cambridge
- Jolles House, London
- John Coxhall Court, Letchworth Garden
- Royal Cambridge Hotel, Cambridge
- Pollys Field, Braintree
- Britannia Gate, Bedford

Retail/Showroom:

- 23 Old Bond Street, London
- Harrods, London
- Fenchurch Street Station, London
- Selfridges, London

Office:

- 83 – 85 Paul Street, London
- Maidstone Innovation Centre, Kent
- Bentley Motors Office Building, Crewe
- 60 Charlotte St, London

Educational:

- Broxbourne School, Broxbourne
- University of Arts, London
- Matthewsgreen, Wokingham
- QMUL Library Refurbishment, London
- St Johns College Community Hub, Cambridge
- University of Law, Birmingham

- Ministry of Defence (MOD) Sleeping Accommodation, Various Training Camp Locations
- Grove park, Brighton
- Watkins House, Harrow
- Oaklands College, St Albans
- New Union Wharf, London
- Akeman Street, Cambridge

Fire Risk Assessment:

- 83 – 85 Paul Street, London
- Harrods Thames Valley Distribution Centre, Thatcham
- Cummins, Daventry
- 103 Colmore Row, Birmingham

Computational Fluid Dynamics (CFD)

- 420 - 424 Seven Sisters Road, Manor Grove
- Harrods Thames Valley Distribution Centre, Thatcham
- Building B3, Docklands
- Northwest Cambridge S3, Cambridge

Jeremy Ockenden | Technical Director

Profession: Fire Safety Engineer

Qualifications: Master of Science (Computational Fluid Dynamics)
Bachelor of Engineering (Fire and Explosion)
Associate Member Institution of Fire Engineers (AIFireE)



Experience:

Company	Position	Date
Affinity Fire Engineering (UK)	Associate	Jan 2018 – Present
BRE Global	Principal Fire Engineer	May 2016 – Dec 2018

Expertise

Jeremy began his Fire Engineering career in London principally working on Educational Commercial and Healthcare projects, developing a specialisation in Advanced Smoke Modelling, Evacuation Modelling and Fire Strategy formulation. Jeremy left London in early 2010 moving to Auckland, New Zealand where he spent two years providing fire consultancy in both New Zealand and Australia on a range of commercial and transportation projects. In 2013 Jeremy moved to Calgary, Canada, before returning to the UK in 2015.

Jeremy has a broad range of experience with fire engineering and simulation techniques, and their practical application under a range of regulatory frameworks adopted internationally. Jeremy uses this range of experience to consider fire and life safety holistically from first principles and assist in developing solutions which best match the clients' needs, whether that be innovative fire engineering to enhance design flexibility and limits costs, or design to guidance to limit risk and smooth the approvals process. Jeremy has an extensive knowledge of the QMUL campus having been involved in a number of recent projects on the site.

Summary of Relevant Experience

Public Assembly:

- Doha Convention Centre, Doha, UAE
- Ferrari World, Abu Dhabi, UAE
- Trump Tower Convention Centre, Baku, Azerbaijan
- Caspian Waterfront Centre, Baku, Azerbaijan
- National Music Centre, Calgary, Canada

Colleges & Universities:

- Queens Mary University, London
- City, University of London, London, UK
- University of Warwick, Warwick, UK
- University of Law, Birmingham
- University of Law London