

Flat Block O

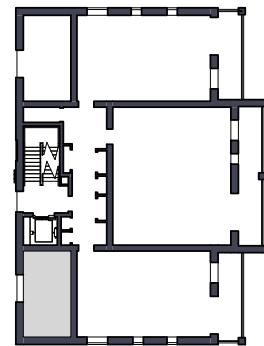
Phase 2
4 Storeys
12 Dwellings

Affordable Rent Re provision

2 x 1B2P
9 x 2B4P
1 x 1B2P W



Location Plan



Block O - Ground Floor

Bulky items storage located in Block N.

Management to transfer bins to space in Block N on collection day ready for pick up.

Provisions Requirements:

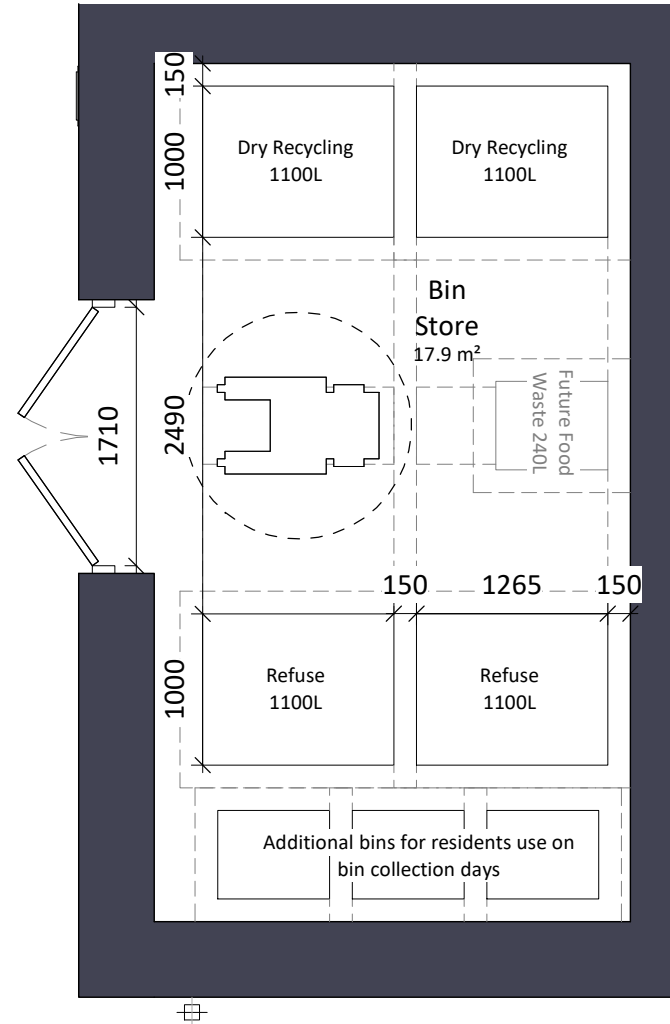
'Refuse and Recycling Storage Requirements'
London Borough of Richmond upon Thames, Local Plan
April 2015

- 1.3. Refuse storage capacity**
1.3.2. Developments using communal refuse storage containers
- Storage capacity of **70 litres per bedroom**.

Block O: **21 Bedrooms**
21 x 70 = **1470 litres**
Block O provides **2200 litres** of refuse storage.

- 1.4. Dry recycling storage capacity**
1.4.2. Flats of three or more units
- 12 to 17 households** served by bin area.
Required:
2 x 360 litres Mixed paper, card and carton recycling bins
2 x 360 litres Mixed container recycling bins

Block O: **12 Dwellings**
Provided:
1 x 1100 litres Mixed paper, card and carton recycling bin
1 x 1100 litres Mixed container recycling bin



Block O - Refuse Store

Notes:
Do not scale. All dimensions are in millimetres unless otherwise stated. This drawing should be read in conjunction with all relevant project information and contract documentation. All dimensions to be checked prior to fabrication and or commencement of works. All works to comply with all relevant legal standards, building regulations and warranty provider requirements. Report any discrepancies, if in doubt ask.

Revisions:					
Rev	Status	Date	Description	Drn	Chkd
C01	A3	24.05.22	Planning Issue	SC	CD
C02	A3	18.08.22	Revised store to include additional bins	JB	CD

Client Name:		Hill Residential			
Project Name:		Ham Close Regeneration			
Drawing Name:		Block O Ground Floor - Refuse Store Plan			
Drawing Number:		HCR-BPTW-B15-00-DR-A-5909		Rev:	Status:
				C02	A3
Project No:	RIBA Stage:	Drawn By:	Scale:		
21-090	3	SC	1:50 @ A3		

PLANNING ISSUE

40 Norman Road,
Greenwich, London
SE10 9QX

t. 020 8293 5175
bptw.co.uk

