

Notes
Do not scale from this drawing.
All dimensions are drawn in millimetres.
Drawing & design copyright LUC.
Reproduction of this drawing in whole or in part is prohibited without prior permission.

KEY
Extent of works boundary
Existing Trees
Dashed line indicates Root Protection Area.

Soft Landscape
Amenity Grass
Hard wearing general purpose seed mix
M1 - Wildflower Grass Mix
M2 - Courtyard Mix
M3 - Linear Park Mix
M4 - Ashburnham Mix
M5 - Woodville Mix
M6 - Internal Streets Mix
M7 - Swale Mix
Proposed Hedge Planting
Evergreen hedges

Proposed Trees
Proposed Tree Planting
Canopy spread shown at planted size in bold. Dashed line indicates approximate mature canopy spread at 25+ years. Species codes listed below.

Ac *Acer campestre*
Bp *Betula pendula*
Bpu *Betula pubescens*
Cb *Carpinus betulus*
Ca *Corylus avellana*
Cs *Cornus sanguinea* 'Midwinter Fire'
Ee *Euonymus europaea*
Fa *Fraxinus alnus*
Ht *Hamamelis x intermedia*
Me *Malus evereste*
Ms *Magnolia stellata*
Pa *Prunus avium*
Pp *Prunus pedis*
Sa *Sorbus aria*
Sc *Salix caprea*
Sp *Salix pentandra*
Tc *Tilia cordata*
Te *Tilia x europaea*

Minimum Available Rooting Volume
Minimum volume equivalent to at least two thirds of the projected canopy area of the mature tree. In accordance with Urban Greening Factor Guidance. For areas under hard surfacing, suitable soil reinforcement systems will be used to support the paving while maintaining suitable root space for trees.

T1 - Tree Pit Type 1
Tree pit dimensions to be a minimum of 1200mm deep. Allow for aggregate drainage layer, all trees to be double staked and tied. Tree pit to be formed from a minimum of 350mm deep approved topsoil to BS3882:2015, overlying 850mm depth of an approved sub-soil to BS801:2013, above a 200mm aggregate drainage layer separated from the soil by a geotextile membrane layer, sub soil below to be broken up to 200mm. Each tree pit will include an irrigation pipe circling the rootball, with inlet point at surface level. Rootcells to be used where available volume overlaps with adjacent areas of hard standing and root deflectors used in close proximity to services.

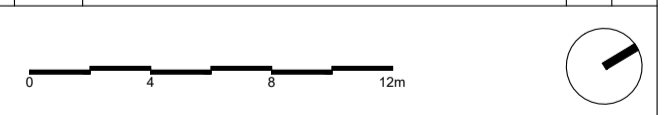
T2 - Tree Pit Type 2
Tree pit dimensions to be a minimum of 1200mm deep. Allow for aggregate drainage layer, all trees to be double staked and tied. Tree pit to be formed from a minimum of 350mm deep approved topsoil to BS3882:2015, overlying 850mm depth of an approved sub-soil to BS801:2013, above a 200mm aggregate drainage layer separated from the soil by a geotextile membrane layer, sub soil below to be broken up to 200mm. Each tree pit will include an irrigation pipe circling the rootball, with inlet point at surface level. Rootcells to be used where available volume overlaps with adjacent areas of hard standing and root deflectors used in close proximity to services.

T3 - Tree Pit Type 3
Tree pit dimensions to be 1200mm deep. Allow for aggregate drainage layer, all trees to be double staked and tied. Tree pit to be formed from a minimum of 350mm deep approved topsoil to BS3882:2015, overlying 650mm depth of an approved sub-soil to BS801:2013, above a 200mm drainage layer separated from the soil by a geotextile membrane layer. Each tree pit will include an irrigation pipe circling the rootball, with inlet point at surface level. Rootcells to be used where available volume overlaps with adjacent areas of hard standing and root deflectors used in close proximity to services.

T4 - Tree Pit Type 4
Tree pit dimensions to be 1200mm deep. Allow for aggregate drainage layer, all trees to be double staked and tied. Tree pit to be formed from a minimum of 350mm deep approved topsoil to BS3882:2015, overlying 650mm depth of an approved sub-soil to BS801:2013, above a 200mm drainage layer separated from the soil by a geotextile membrane layer. Each tree pit will include an irrigation pipe circling the rootball, with inlet point at surface level. Rootcells to be used where available volume overlaps with adjacent areas of hard standing and root deflectors used in close proximity to services.

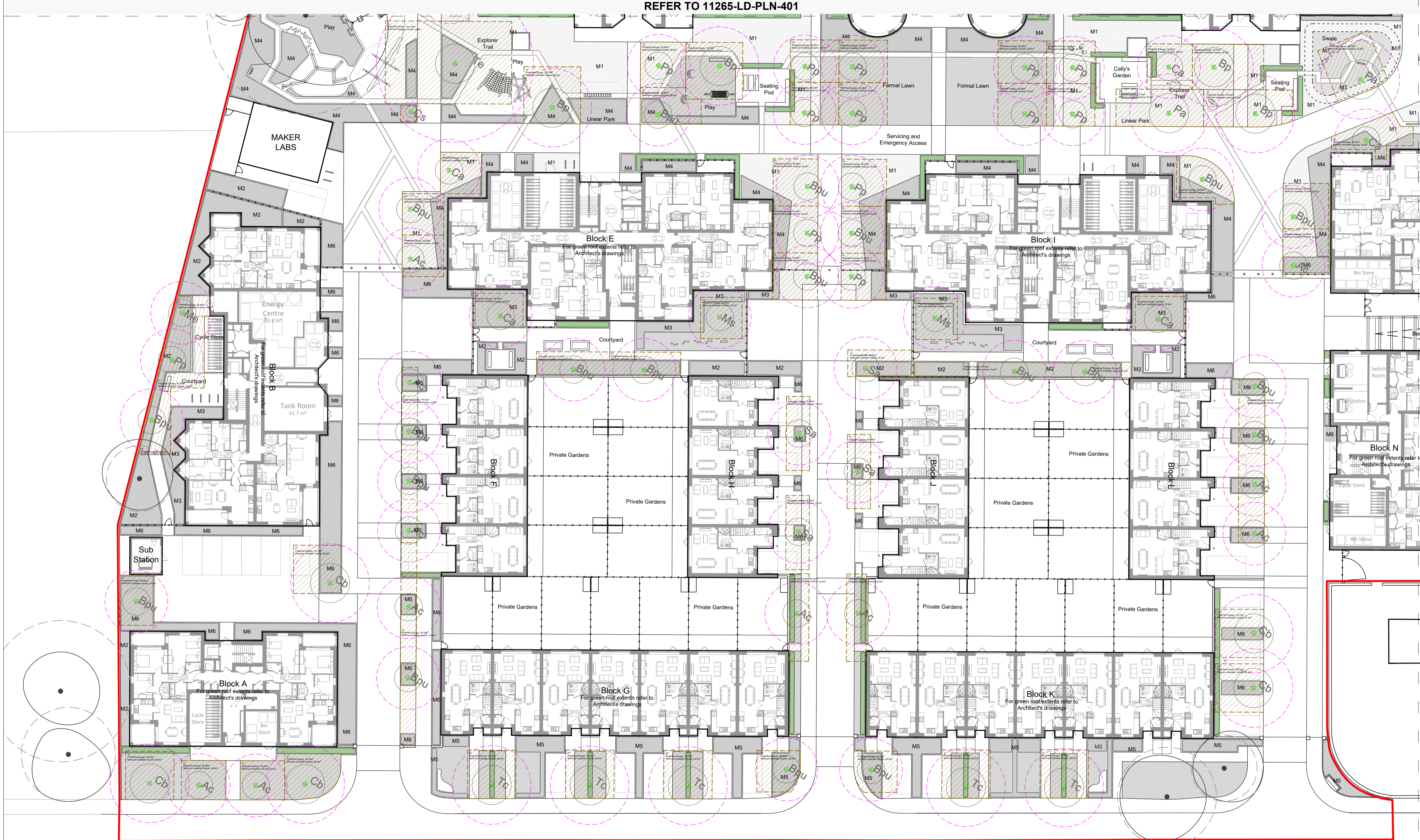
REFER TO 11265-LD-PLN-403

Iss	Date	Description	DN	CHK
P08	20.03.22	Issued for Approval - updated to address officers comments	AT	JL
P04	22.03.22	Issued for Approval - updated to address officers comments	AT	JL
P03	09.03.22	Issued for Approval - updated to address officers comments	AT	JL
P02	21.03.22	Issued for Approval	AT	JL
P01	09.03.22	Issued for Approval	AT	JL



LUC LUC London
250 Waterloo Road, London, SE1 8RD
+44 (0)20 7383 5784
london@luc.co.uk
www.luc.co.uk

Project HAM CLOSE REGENERATION	
Client HILL RESIDENTIAL	
Scale @A1 1:250	Status FOR APPROVAL
Drawing Title SOFT LANDSCAPE GENERAL ARRANGEMENT (SHEET 4 OF 4)	
Job Nr 11265	Drawing Nr LD-PLN-404
	Issue P05



ASHBURNHAM ROAD

