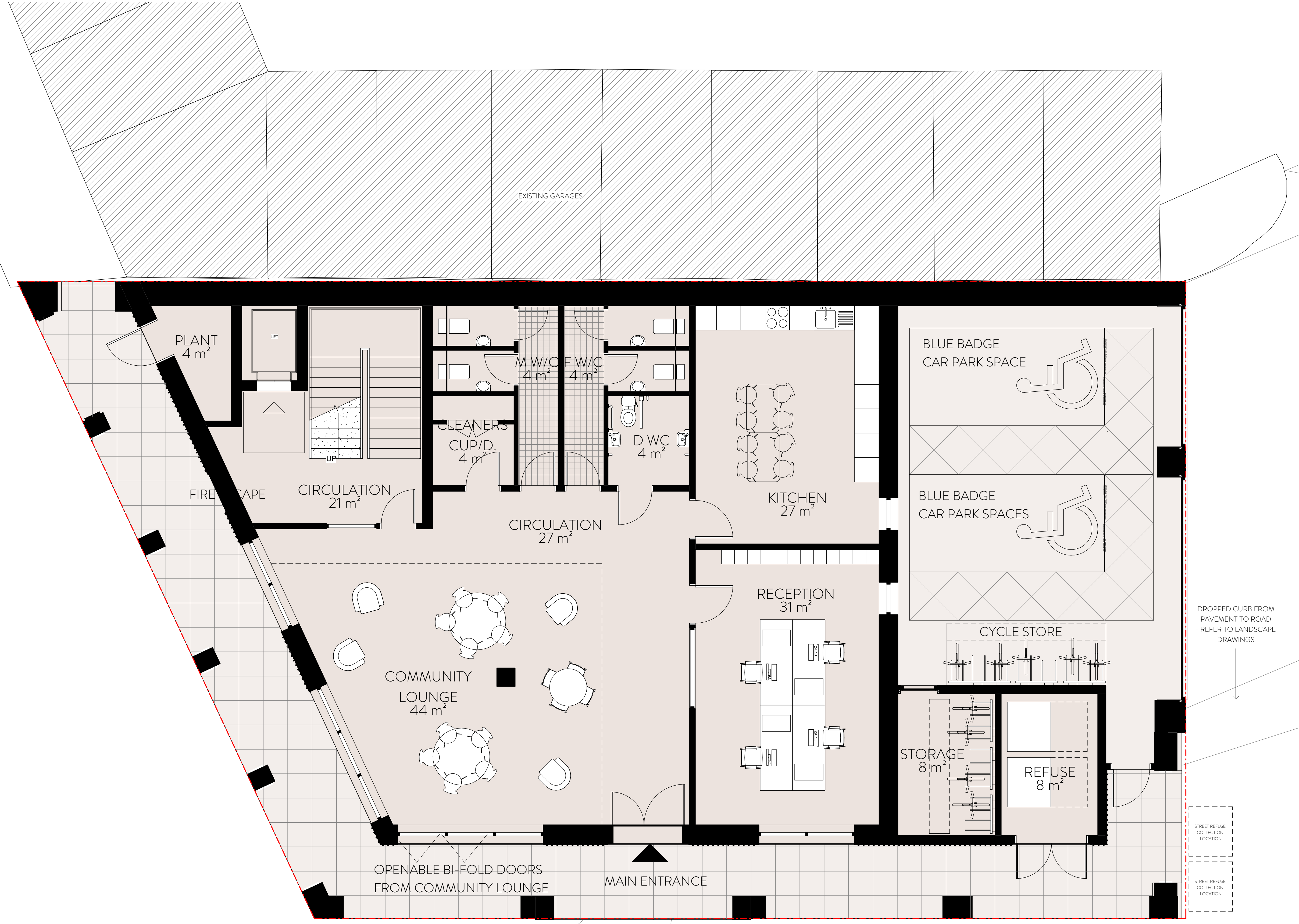


**DISCLAIMER:**

1. This drawing is copyright and remains the property of Weston Rengfo Architects Practice
2. This drawing is protected by copyright and is for use on this specific project site only.
3. Do not scale from this drawing.
4. This drawing is to be read in conjunction with all related drawings.
5. The originator should be notified immediately of any discrepancy.
6. All dimensions and Setting-out must be confirmed on site, prior to start fabrication and installation.
7. This drawing is to be read in conjunction with M&E, Fire, Structural, Landscape information, drawings and specifications.
8. Fire rating as per fire strategy.
9. Refer to landscape drawings for further information on landscape strategy
10. All existing drawings show indicative heights and measurements
11. Drawings based on topographical information from SURVEY SOLUTIONS no. 35318BWUG-01

**PROPOSED PLANS LEGEND**

- - - - - Denotes site boundary
- Existing garages



DROPPED CURB FROM PAVEMENT TO ROAD - REFER TO LANDSCAPE DRAWINGS

STREET REFUSE COLLECTION LOCATION

STREET REFUSE COLLECTION LOCATION

OPENABLE BI-FOLD DOORS FROM COMMUNITY LOUNGE  
MAIN ENTRANCE

rev	description	date	dr by	sp by
P01	Planning Issue	07/03/22	JP	SW
P02	Planning Issue	25/05/22	JP	SW
P03	Refuse Store - Amended Configuration	10/08/22	JP	SW

ORIGINAL BY JP



Client <b>HILL RESIDENTIAL</b>			
Project <b>HAM CLOSE COMMUNITY CENTRE</b>			
Drawing <b>PROPOSED GROUND FLOOR PLAN</b>			
Drawing number <b>WRAP_GA_A_0166</b>	Scale <b>AS INDICATED</b>		
Project number <b>20019</b>	Issue status <b>PLANNING ISSUE</b>		
<b>WRAP</b>	<b>GA</b>	<b>A</b>	<b>0166</b>
			<b>P03</b>

