

### 03 Consultation and Engagement

#### Sport England and Local Community Groups/ Schools

Engagement has taken place with Sports England and local community groups and schools, to understand the demand for and interest in using the proposed indoor and outdoor facilities at the site. Feedback has also been received from local residents at the two public consultation events. Further information on this is provided in the submitted Statement of Community Involvement, prepared by BECG and the Sports Provision Statement, prepared by ADP.

A Community Use Agreement is proposed to be secured as part of the planning permission, to ensure that the managed community access is provided.

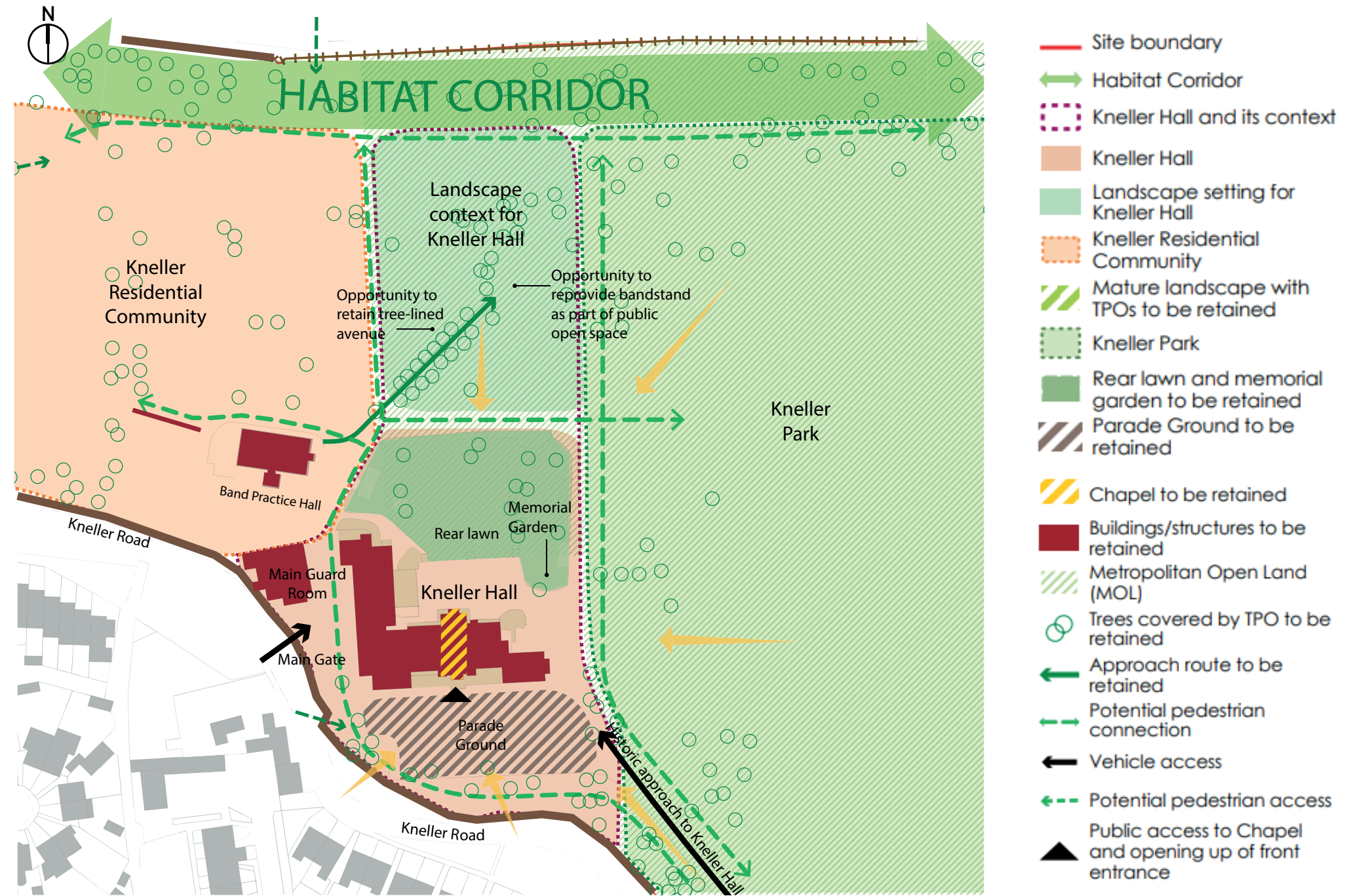
Set out below is a summary of what we have learnt from the engagement, focusing on the outside facilities:

- + Outside grass pitches, tennis courts and astro turf Hockey pitch- It is clear that there is demand from both local community groups and local schools to hire these facilities after school, in school holidays and at weekends. Many local groups have expressed an interest in building links with the school and using the facilities.
- + Outside Bandstand - Residents have spoken very fondly of outside bandstand concerts that they were invited to attend in the past, by the Royal Military School of Music. It is apparent that they would like to be invited to the school in the future for outside concerts.
- + Forest School and Habitat Corridor - Local school groups have expressed an interest in visiting the site for forest school and outside learning opportunities. In particular, Chase Bridge School has advised that although in the past they had access to land to run this programme, they no longer do and therefore there is an opportunity to build links with the new school, so that they can reintroduce this for their pupils.



### 03 Consultation and Engagement Supplementary Planning Document

- + Prior to being bought Kneller Hall had a Supplementary Planning Document created in March 2020. The purpose of the SPD is to guide the future development of the site, including the uses it could support, so that it can support the vitality and viability of the local area as a whole
- + This SPD documented the council's vision for Kneller Hall and MOL area to become divided into three broad sub-areas: Kneller Residential Community, Kneller Hall and Kneller Park.
- + Outlined in the SPD is a green infrastructure strategy, with the plan to create a high quality and multifunctional landscape which enhances the setting of Kneller Hall as well as delivers on biodiversity net-gain.
- + The Kneller Hall SPD was prepared before the site was sold and before it was known who the end user would be. Now Dukes Education has acquired the site and it is known that the site will be used for a day school, consideration has been given to what elements of the aspirations set out in the SPD can be carried through to Dukes Education proposals; which are not feasible, given the need to ensure pupil safety and management; and what other landscaping opportunities are possible that were not considered in the SPD



Map Notes  
Kneller Hall SPD March 2020

---

## 04 - Landscape Masterplan

---

## 04 Landscape Masterplan

### Introduction

The landscape design for Kneller Hall brings together the many elements to ensure that the site can function as a school whilst creating a balance between respecting the historic elements of the site and creating a safe, educational and sustainable place.

Using the landscape to set the new built form within the historic setting has created a series of landscape spaces. We know that a variety of spaces is required to provide an environment for all, somewhere to sit in the sun or shade, to have a private one on one chat or in a group, to have quiet spaces for learning, to learn about ecology and habitat in a forest school, to have areas for outside performance or growing herbs and vegetables or to play sport. It's the intention to provide this variety to allow people to connect with each other and with nature in a variety of ways.

There are a number of design elements which refer back to the history of the site. The Parade Ground at the front will remain a hard landscaped and open space with views into the site from Kneller Road being protected. The Melon Yard which restores an original garden wall for a walled kitchen garden, the mature trees hinting at the location of the lake designed by Repton, the external performance area and the original gate posts and boundary railings to be restored.

The following pages will explain how our core design principles of education, ecology and history have been threaded through the design and taking in advice from the variety of consultations this scheme presents the optimum layout given the constraints of the site.



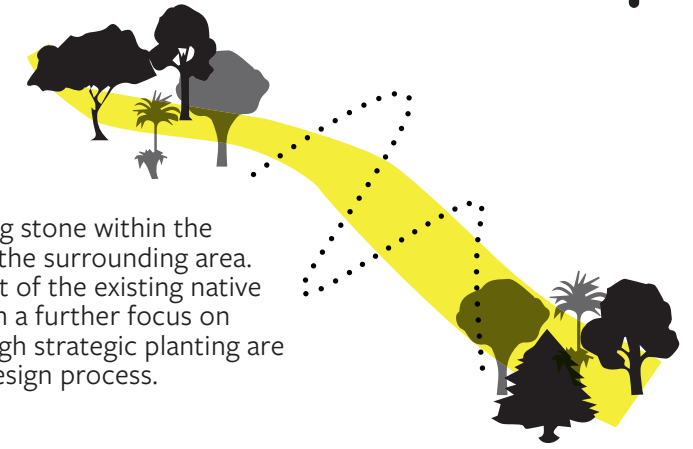
## 04 Landscape Masterplan

### Masterplan Concept



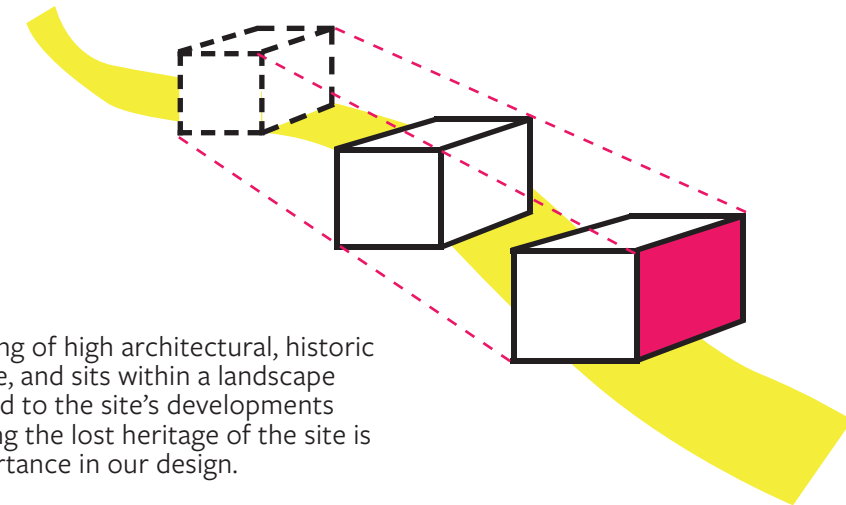
#### Ecology

Kneller Hall is a vital stepping stone within the green and blue networks in the surrounding area. Protection and development of the existing native woodland on site, along with a further focus on habitat establishment through strategic planting are key aims in the landscape design process.



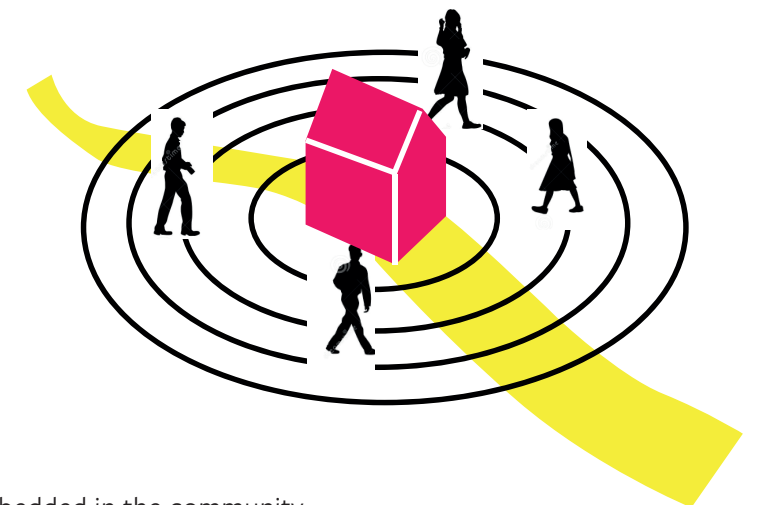
#### Heritage

Kneller Hall is building of high architectural, historic and communal value, and sits within a landscape which has responded to the site's developments over time. Reclaiming the lost heritage of the site is of paramount importance in our design.



#### Education

The site becomes embedded in the community - open to community groups, public and students. A safe and secure environment with clearly visible entrance that honours Kneller Hall's long standing history of education.



## 04 Landscape Masterplan

### Masterplan Development



#### Option 1

- + Design does not respond well to green corridor to the North of the site and protected trees will be lost.
- + Site is congested putting pressure on the MOL and the existing trees
- + Built form is close to boundary and could be more respectful of the local townscape character



#### Option 2

- + Revision of brief has relived pressure on the green space.
- + No new buildings are located in the green corridor to the North
- + Built form organisation has created more generous social landscape spaces in the courtyards
- + New drop off layout relieves pressure from the surrounding roads.
- + Buildings moved away from the boundary
- + Car parking has been organised to remove cars from the centre of the scheme and re-use areas of hard standing for parking to the edges of the site.



#### Option 3

- + Sports pitches have been reviewed with sport England and reduced in size decreasing the impact on the MOL.
- + This allows more room for boundary planting to soften views over the MOL.

## 04 Landscape Masterplan

### Masterplan



1. Staff & Services Entrance Only
2. Staff Car Park
3. Refuse Store
4. The Melon Yard - historic walled kitchen garden
5. The Forest School
6. The Circular Lawn - Informal Courtyard
7. Informal Courtyard
8. Pedestrian and Student Entrance - green bike stores and accessible school entrance
9. Maintenance Area and Energy Centre
10. Infiltration Basin - wetland planting
11. Outdoor Stage
12. Informal Hard Social Area and Occasional Coach/ Overfill Parking
13. The Formal Lawn
14. The Library Terrace
15. The Parade Ground - student drop off and occasional car park for events
16. Hard Standing Tennis Courts
17. All Weather Pitch
18. Hard Standing Basketball Court
19. Sports Pavilion
20. Pedestrian and Vehicular Entrance - only entrance for parent vehicles and drop off
21. Acoustic Fence
22. Amenity Lawn Sports Pitches

