

## 04 Landscape Masterplan

### Hard Landscape Proposals



**EXISTING HARD LANDSCAPE IN MOL**


|                         | LAND INSIDE OF MOL (m <sup>2</sup> ) | LAND OUTSIDE OF MOL (m <sup>2</sup> ) |
|-------------------------|--------------------------------------|---------------------------------------|
| EXISTING HARD LANDSCAPE | 6448                                 | 9489                                  |



**PROPOSED HARD LANDSCAPE IN MOL**

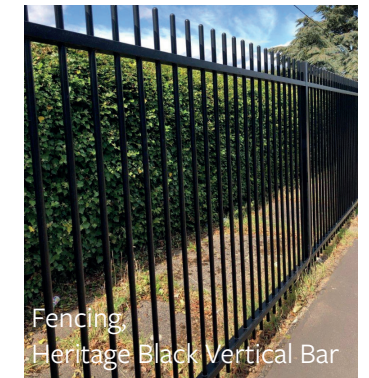
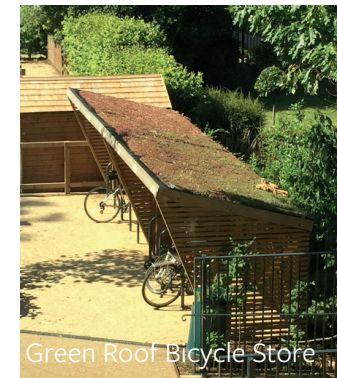
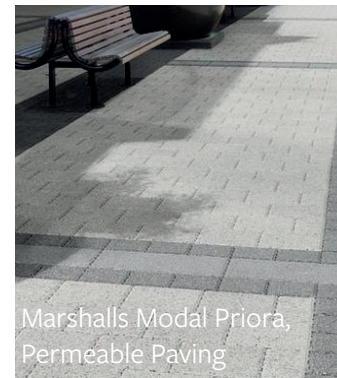
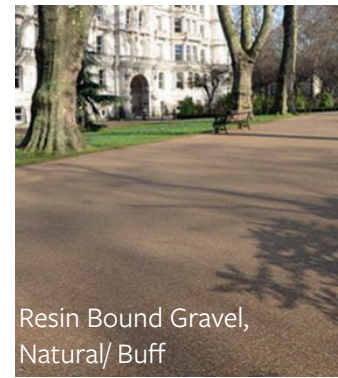
|                         | LAND INSIDE OF MOL (m <sup>2</sup> ) | LAND OUTSIDE OF MOL (m <sup>2</sup> ) |
|-------------------------|--------------------------------------|---------------------------------------|
| PROPOSED HARD LANDSCAPE | 5808                                 | 14 300                                |

**KEY**

 Hardstanding inside the MOL

## 04 Landscape Masterplan Hard Landscape Proposals

- + Permeable paving used throughout the scheme to provide a sustainable drainage solution.
- + In areas of high historic significance such as The Parade Ground a resin bound gravel will be used with a small amount of natural stone for highlights. Contrasting colours will be used to denote different uses. A buff to The Parade Ground and a Silver Grey to the access road.
- + Tarmac will be limited to car parking areas and internal maintenance paths, with white lining to mark out car parking bays and maintenance areas.
- + Information on the boundary treatment can be found on page \*\*
- + New external walls will be formed from natural stone to compliment the surrounding architecture.



## 04 Landscape Masterplan

### Soft Landscape Proposals

#### UK Native Trees



Acer campestre



Betula utilis



Corylus avellana



Fagus sylvatica



Ilex aquifolium



Quercus Robur

#### UK Native Shrubs



Cornus sanguinea



Euonymus europaeus



Ligustrum vulgare



Rosa canina



Rosa arvensis



Viburnum opulus

#### UK Native Herbaceous Perennials



Eupatorium cannabinum



Euphorbia esula



Filipendula vulgaris



Geranium maculatum



Hypericum perforatum



Iris pseudacorus

- + Planting has been chosen to provide wildlife value and interest all year round.
- + Further information can be found on the soft landscape drawings which accompany this application.
- + The soft landscape drawings show the tree canopy size at 20 and 50 years

