

## 04 Landscape Masterplan Key Area - The Parade Ground

The area to the front of Kneller Hall is known as the parade ground. During the time when Kneller was used as a military school of music the primary function of this space was as a hard landscaped area for military parades and other events.

The intention is to keep the hard landscaped area, replacing the current tarmac with a more sensitive material – resin bound gravel. The area will be formed with contrasting colours and some natural stone to reflect the geometry of the front façade of Kneller Hall.

At the beginning and end of the school day this area will function as a vehicular drop off/pick up. The area available for this has been calculated to comply with the travel plan accompanying this application. Vehicles will be able to queue along the drive way and will mean that school traffic is dealt with on site. Outside of these times the parade ground will be clear and there will be no vehicles parked on it.

The view into Kneller Hall from Kneller Road is one of the majestic and it is important to maintain the openness of the view of Kneller Hall. Therefore no additional boundary planting proposed here

The Parade Ground will be used for special events only remaining a quiet space for the majority of the school day and year.

We note from historic research that there used to be a conservatory as part of the formal entrance to Kneller Hall. To respond to this we have included some Mediterranean type planting in pots here with Olive trees placed to sit behind the arcade.





## 04 Landscape Masterplan Key Area - School Entrance

The main school entrance is to the west of Kneller Hall, the formal entrance to the front of the building is not able to support a disabled person to enter here and so everybody will come arrive at the same place to the west. This arrangement also helps to maintain quietness to The Parade Ground.

A set of steps blending in with a ramp and a formal ramp creates an arrival space for all at the west. Integrated with seating, planting and a new signage plinth which will sensitively signpost that this is the everyday entrance for pupils, staff and visitors.

The materials here will be formed of a permeable paving to the hard landscape surface and natural stone to the walls.

The seating will be formed of timber.





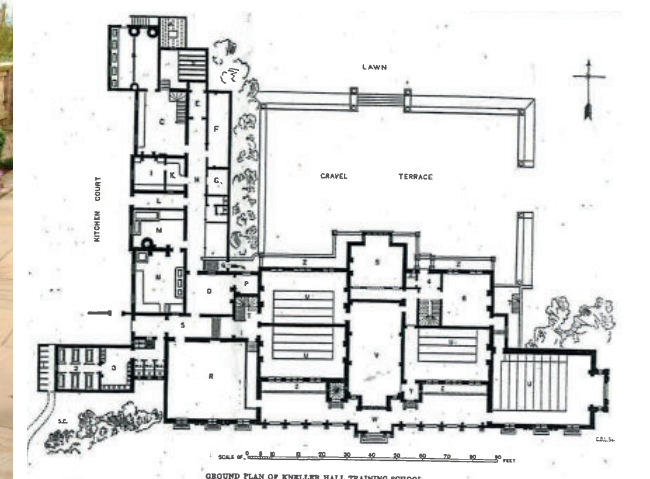
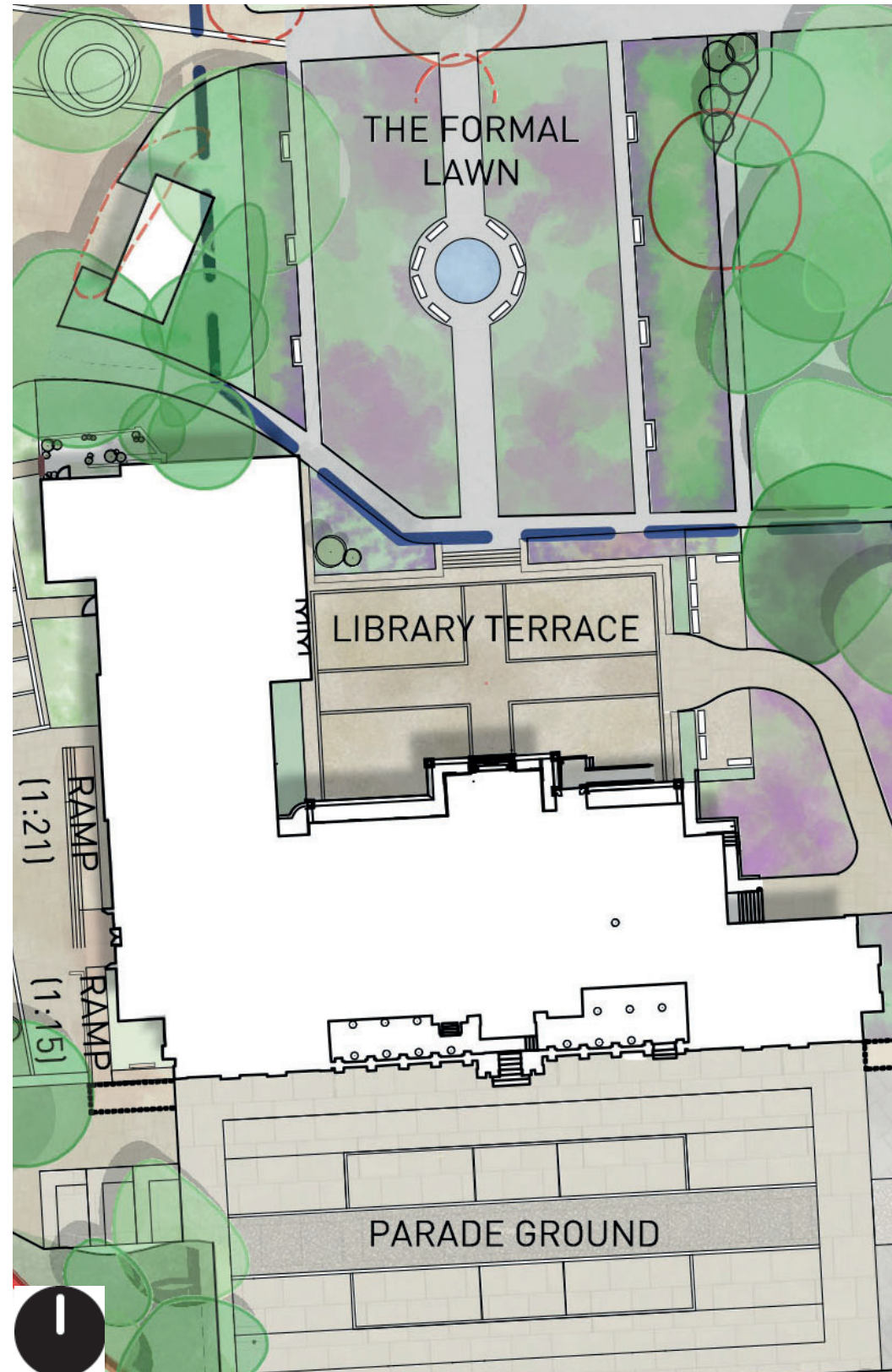
## 04 Landscape Masterplan

### Key Area - The Library Terrace

The area to the rear of Kneller Hall will be known as the Library Terrace as this links the historic rear façade to the new extension where the new school library will be. Whilst a formal layout will be created in natural stone and the external steps and footpaths reconfigured to enhance the symmetry of the space, there will be an element of fun with contemporary external furniture. This is to create an external learning environment where pupils can spill out from the library and take advantage of some fresh air. We encourage group space here to allow discussion and team work skills to develop.

Herbaceous borders, a low wall and a set of restored steps lead down from The Library Terrace to The Formal Lawn.

The herbaceous borders will create a stunning foreground to the view of Kneller from the rear, species will be chosen for their resistance to drought and to create additional food sources for insects. Ornamental grasses will be used to give contrast and movement through the beds, these can be left over winter as the seed heads provide over-wintering habitat for insects whilst creating strong architectural forms which look beautiful in the winter frosts.





## 04 Landscape Masterplan

### Key Area - The Formal Lawn

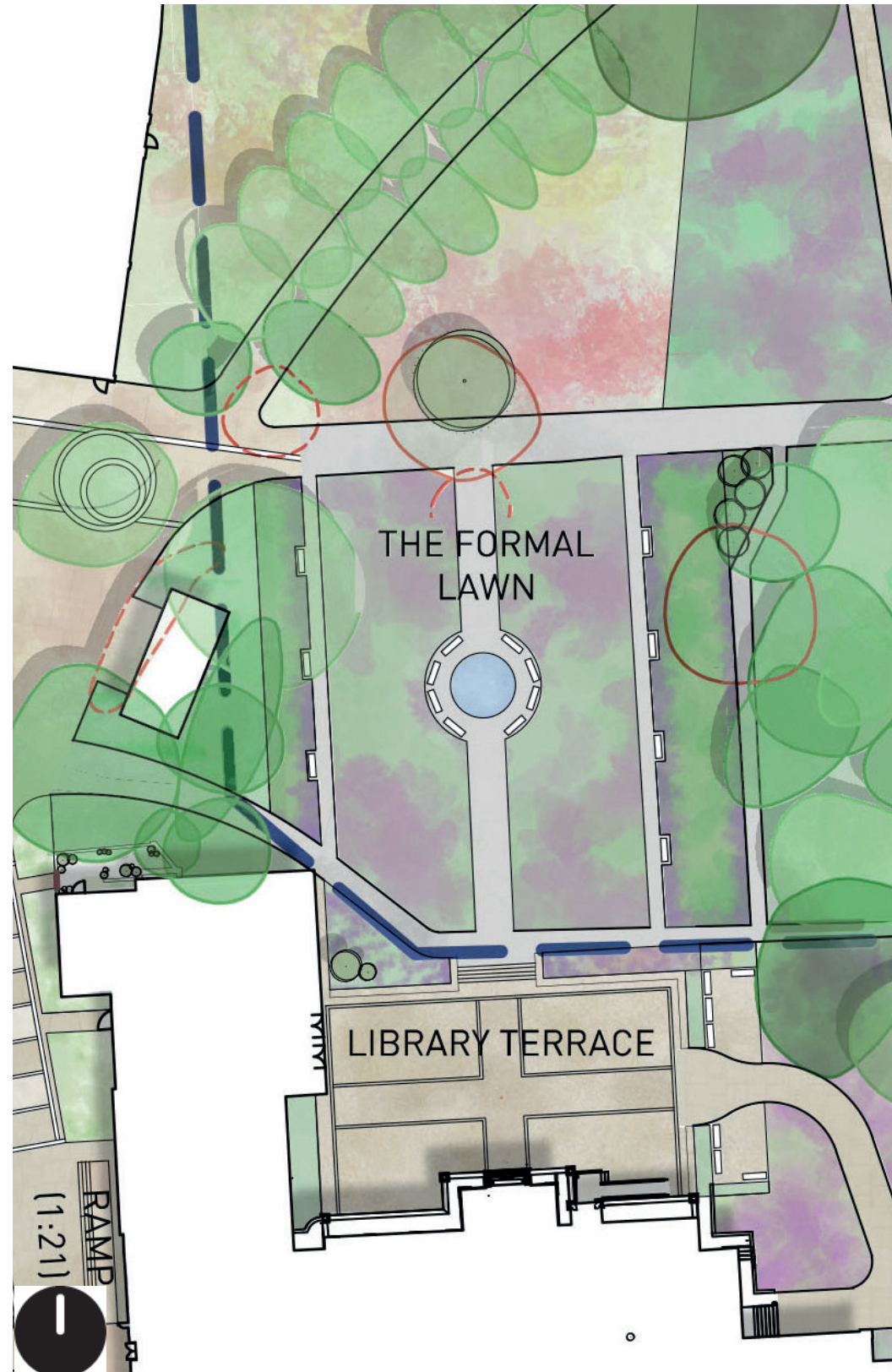
The Formal Lawn links Kneller Hall from the rear terrace to the wider landscape and the external band stand, which is being retained in its original format.

A simple lawn formed of a low growing species rich grass and flower mix to attract insects will be intersected on the axis of Kneller Hall with a formal path. There will be formal herbaceous borders to the outside edges of the lawn.

A water feature has been proposed in the centre to create a focal point with benching placed around the area.

This design has been informed by consultation with the Heritage Officer and seeks to re-instate the original intent of a formality whilst increasing the biodiversity of the site.

A single tree has been placed along this axis in memory of HRH Queen Elizabeth II - *Acer campestre* 'Queen Elizabeth'





## 04 Landscape Masterplan

### Key Area - The Informal Courtyard

The space between the band practice hall and the guards house will create a new informal courtyard. The intention here is for it to provide a relaxed external social space with trees and benches for small groups. We have chosen the species *Paulownia tomentosa* as the ornamental tree in this area, with its exceptional qualities for drought resistance, pollution tolerance and hardy up to -26 degrees it will do well in this space. In spring the flowers resemble the foxglove and are highly scented, they give a beautiful spring display of purple.

Ornamental planting within the plant beds will create seasonal interest with species chosen to give year round colour whilst also providing food and hibernation habitat for insects.

The hard landscape surface will be a permeable block paving.





## 04 Landscape Masterplan

### Key Area - The Formal Courtyard

The formal courtyard links the teaching block and the sports hall and is the largest primary social space on the site. The circular lawn to the area is central to the space which playfully raises in level to create a seating area to a section of the edge and a lawn that is tilted towards the morning sun. The lawn will be planted with a seed mix containing a variety of low growing flowering species, this adds bio-diversity to the site and creates additional food sources for insects.

Our design has been inspired by the Oxford College of St Catherine (St Catz) to create a mature collegiate atmosphere, the design principles here are to use the architecture of the building to create the form within the landscape.

Three magnolia trees sit off centre to the lawn and will provide all year interest with their evergreen leaves and beautiful spring flowers.

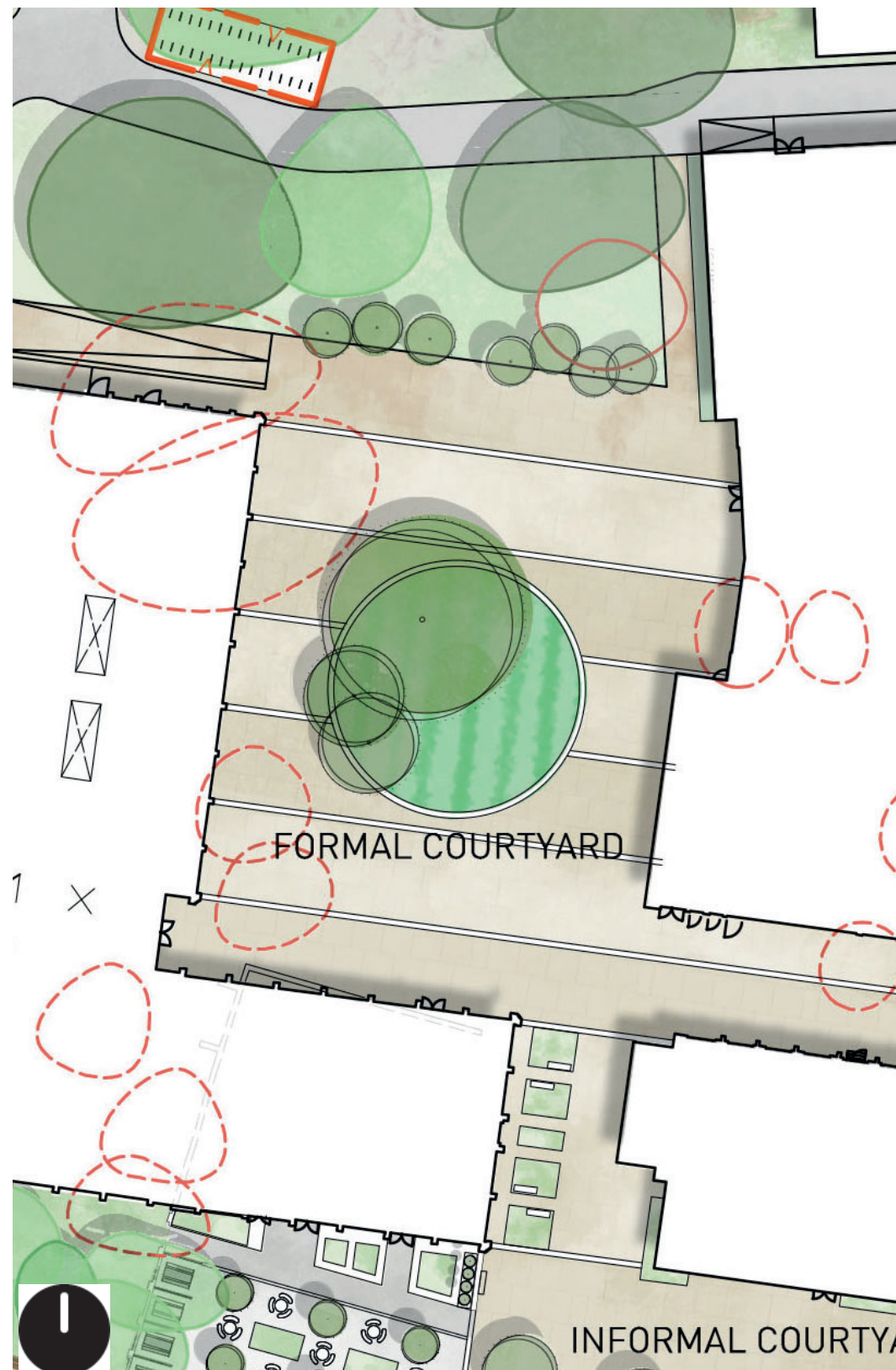
Seating and planting will form the edges to the North of the courtyard to tie in with the Informal Courtyard by using the same street furniture range.

A green wall consisting of a variety of clematis species climbing a steel trellis will be used within the Sports Centre façade.

The hard landscape surface here will be permeable paving

There are plenty of opportunity to sit in the sun or shade in the formal courtyard.

There is a seating area located with the elevations of the Swimming Pool for afternoon/evening shade and the trees will provide shade in the morning. There are also many other areas across the site which provide options for sitting in the shade.





## 04 Landscape Masterplan

### Key Area - The Melon Yard

Originally called 'The Melon Yard', this is the area it was where the walled kitchen garden used to be. There is still evidence of the wall which we are intending to keep and restore using brick from the section that will be removed during the construction of the teaching block.

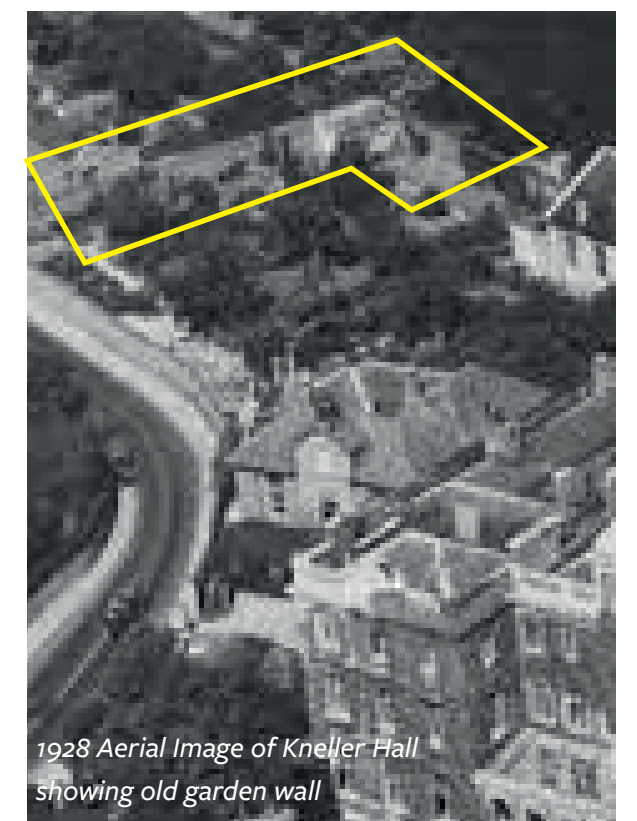
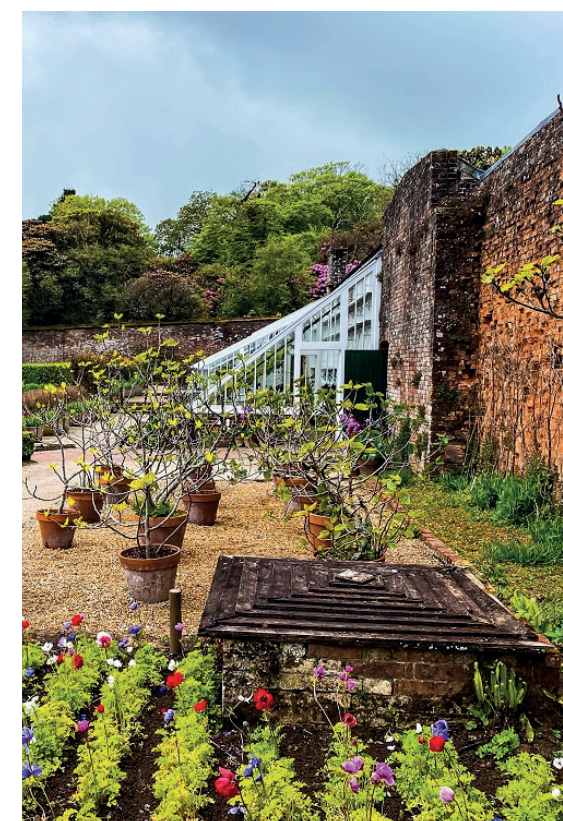
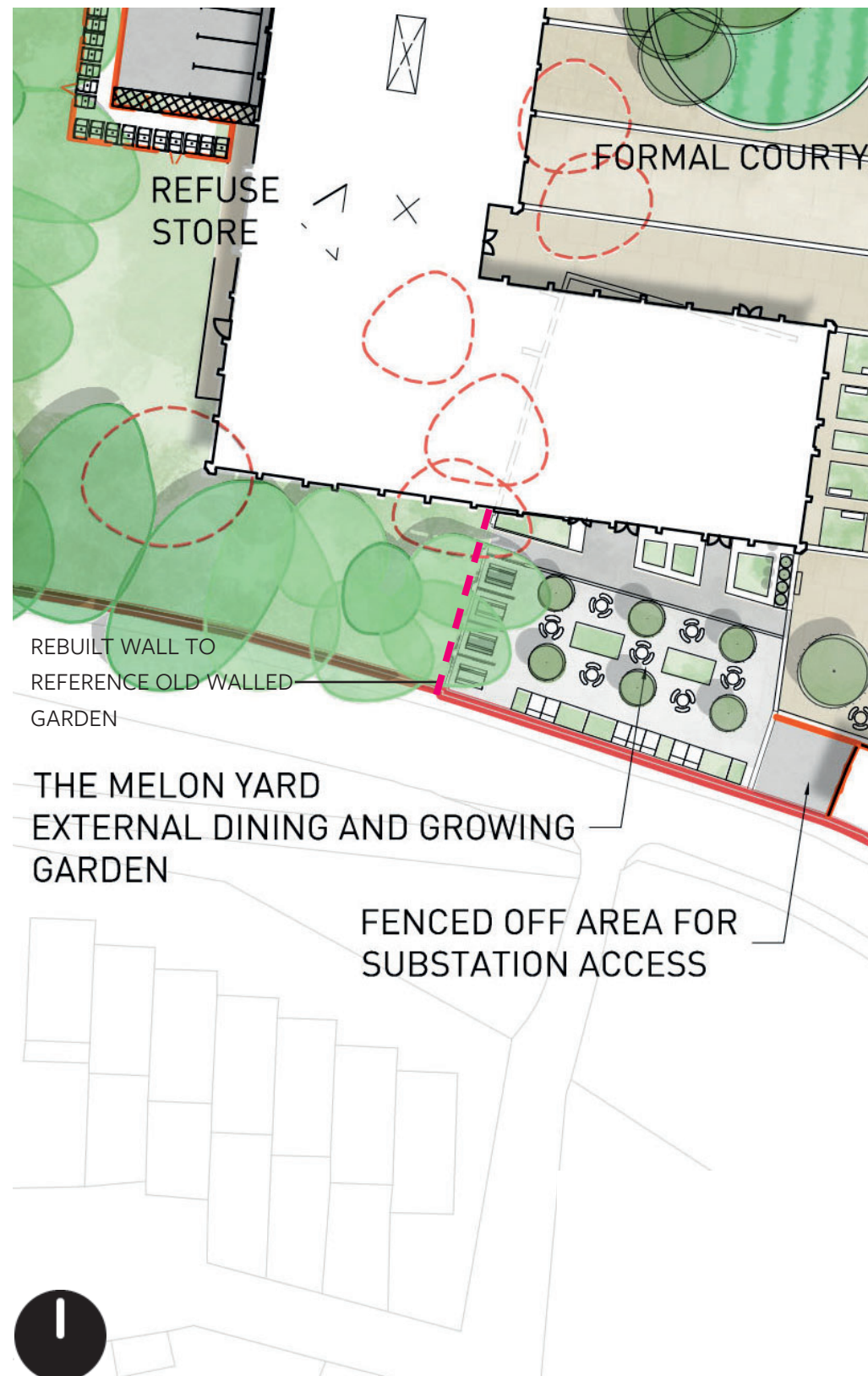
A new kitchen garden here will create growing beds where pupils can grow their own food, however this will also be a spill out area from the dining hall where people can sit and eat their meals.

An arrangement of *Amelanchier lamarckii* trees in a grid will provide a cool place to sit in the summer, in spring they give off a beautiful scent and then provide a food source for birds in the autumn and winter.

Underplanting in some of the plant beds will create year round interest with evergreen species, bulbs, herbs, grasses and perennials.

Some of the plantbeds will be left clear for the school to plant seasonally with fruit and vegetables.

Along the restored wall there will be fruit species such as apples, pears, cherries and figs. The warm micro-climate within this walled area may also be able to support Melons



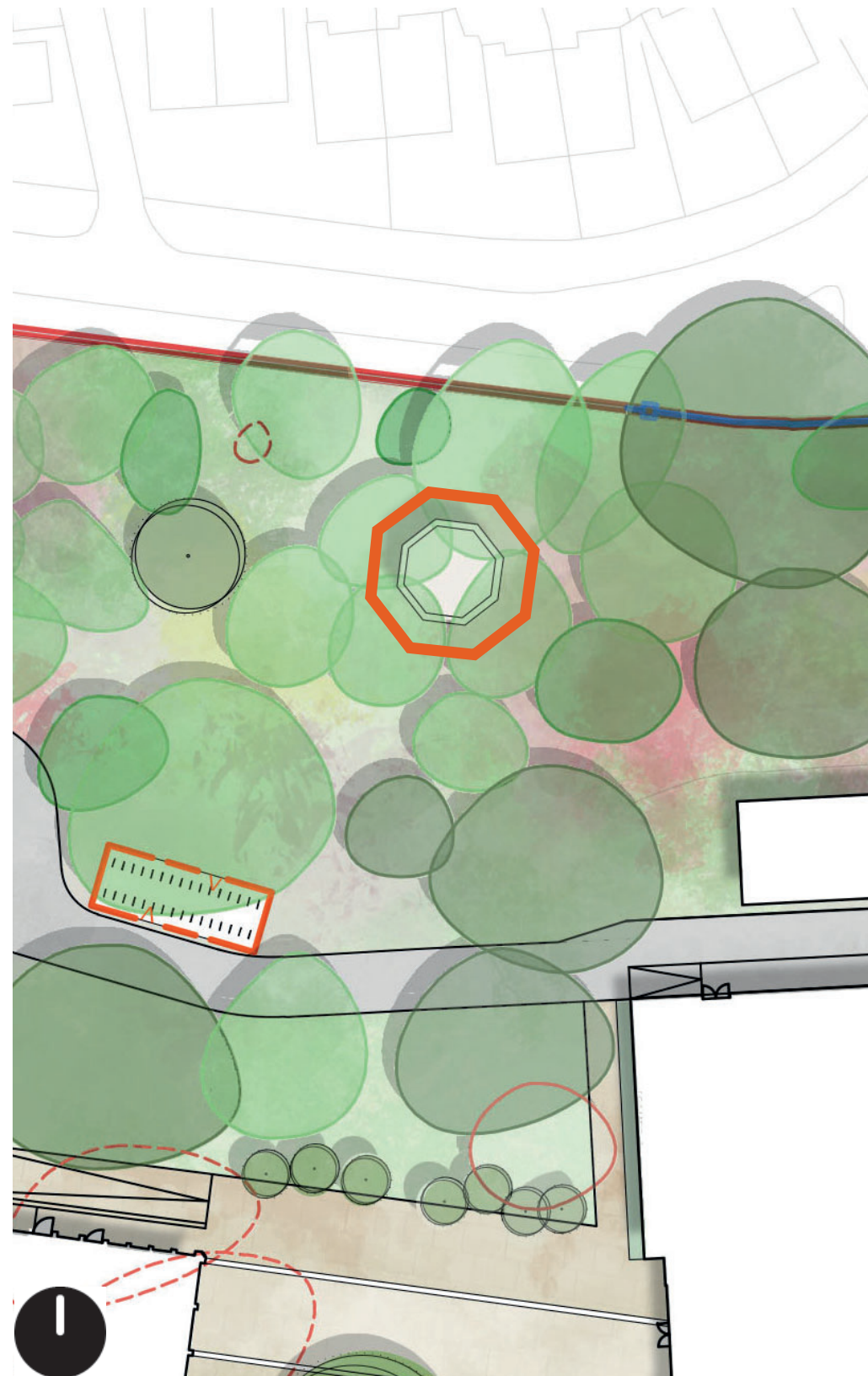
1928 Aerial Image of Kneller Hall showing old garden wall



## 04 Landscape Masterplan

### Key Area - Forest School

The forest school shelter is set within the ecological corridor and adjacent to the teaching building. Formed of small octagonal timber shelter which will provide an area for external nature based learning, this can also be extended to local schools and wider community groups such as cubs and brownies. This adds to the wide variety of external learning spaces available to the school and the community, it's important for people to be able to explore different ways of learning the compliment their learning style. For example, the upcoming Natural History GCSE will be able to inspire a new generation into considering careers in a nature based industry and for those who may connect with a practical based career path.





## 04 Landscape Masterplan

### Strategy - Site Movement

- + The existing vehicle parking area for circa 32 cars to the north east of Kneller Hall and within the MOL will be retained
- + ADP have engaged with the transport consultant to agree the position and provision of cycle parking and further vehicle parking, including accessible parking bays
- + The aim is to accommodate the further vehicle parking and cycle parking outside of the MOL.

#### KEY

- AP Accessible Parking (blue badge)
- SP Staff Parking
- Car Route - for drop-off and pick up
- Servicing & Emergency Route
- Pedestrian Routes
- Building Entrances
- Entrance for Special Occasions
- Community Use Entrance
- Cycle Parking





## 04 Landscape Masterplan

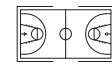
### Strategy - External Sports

- + Sports pitches design have been developed in line with Sport England requirements
- + Engagement with the landscape architect, external lighting, acoustic, ecology and arboriculture consultant has taken place.
- + Flood lighting that is proposed to be provided to the tennis courts only. Advice has been provided from the lighting consultant, through engagement with the ecology consultant, on the style of this lighting to minimise light spill.
- + Fencing has been provided surrounding the Hockey Pitch, including an acoustic fence along the eastern boundary, as recommended by the acoustic consultant. As existing, the tennis court has fencing surrounding it. No other pitches are fenced and they will remain open, as existing.
- + Managed community access to facilities at weekends, summer evenings and school holidays.



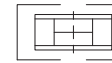
**Basketball Court (existing)**

Category: Community  
Size: 30x17m  
Finish: Hard Standing



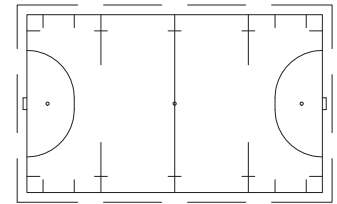
**Tennis Court (existing)**

Category: Inter(National)  
Size: 34.75x17.07m  
Finish: Hard Standing



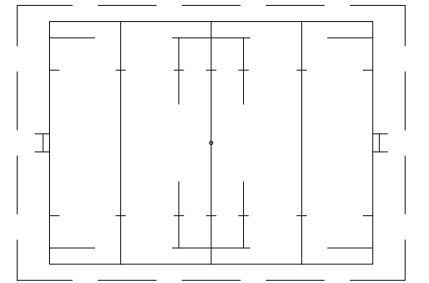
**Hockey Field**

Category: Inter(National)  
Size: 97.4x61m  
Finish: Synthetic grass



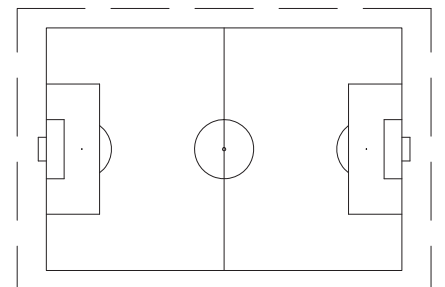
**Rugby Field**

Category: Inter(National)  
Size: 120x85m  
Finish: Grass



**Football Field**

Category: Inter(National)  
Size: 128x87m  
Finish: Grass



**Cricket Field**

Category: Inter(National)  
Size: 128x118m  
Finish: Grass

