

13 Forest School Shelter

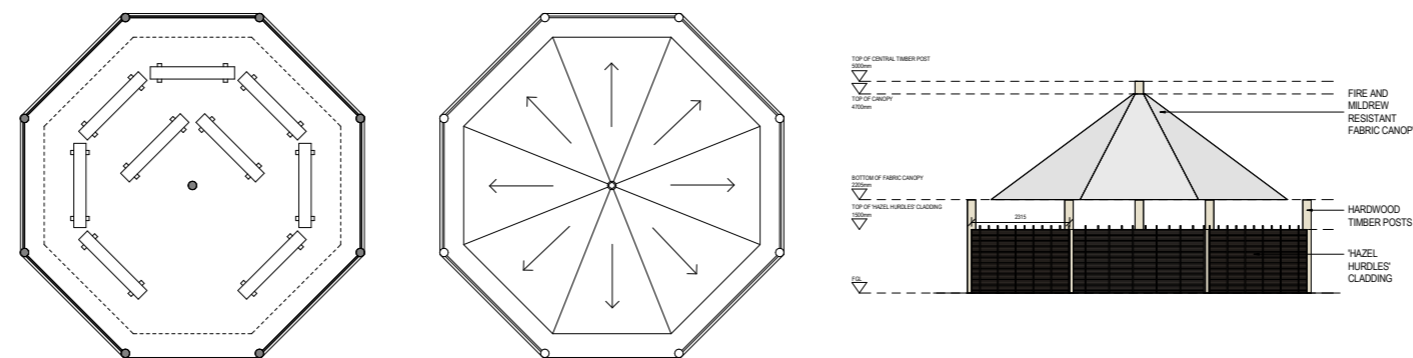
Photos and Proposals

Dukes Education is proposing to include a forest school as part of their curriculum this takes place in a woodland or natural environment to support the development of a lifelong relationship between the learner and the natural world. As part of the forest school a shelter will be provided within the grounds of Kneller Hall school to provide a cover against wind and rain.

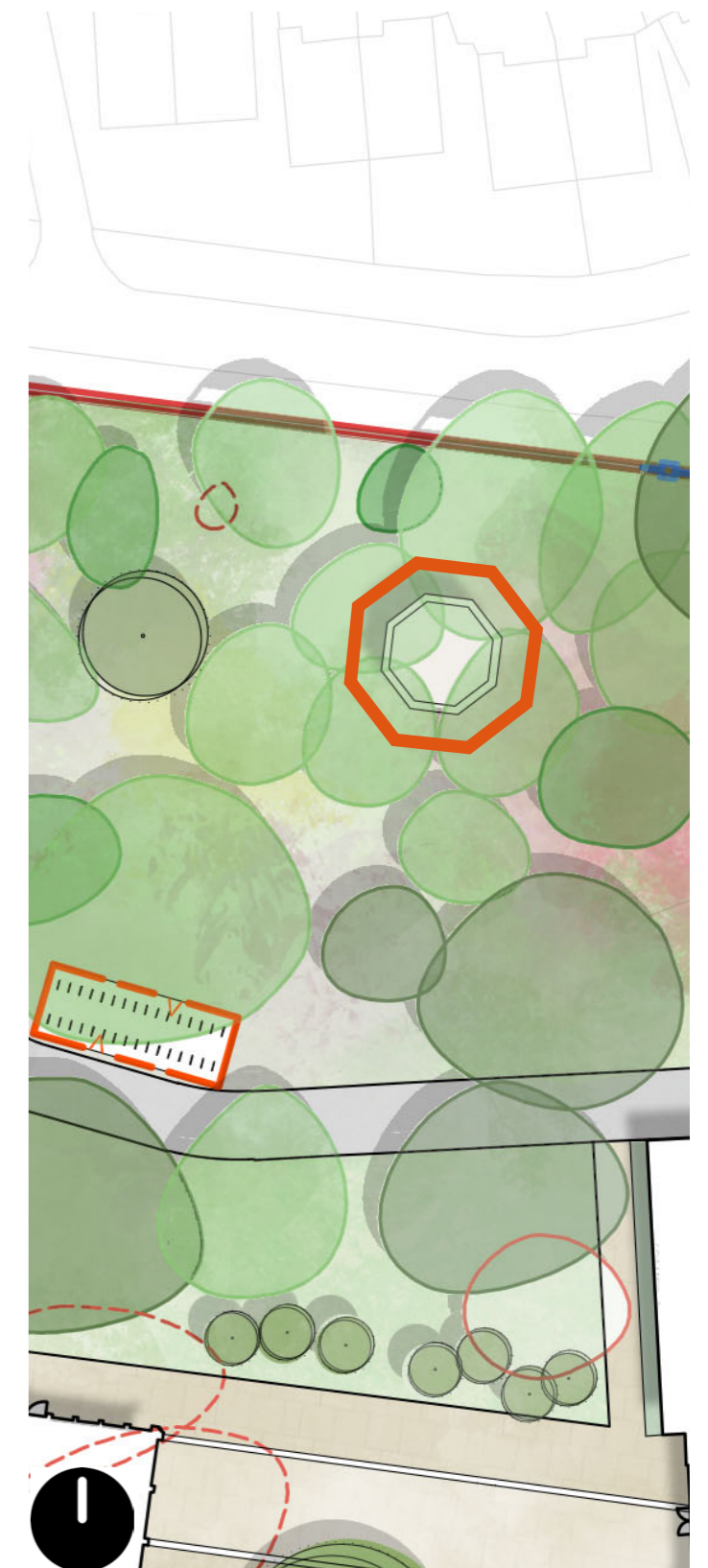
The shelter is set within the ecological corridor and close to the teaching building. Formed of small octagonal timber shelter which will provide an area for external nature based learning, this can also be extended to wider community groups such as cubs and brownies. This adds to the wide variety of external learning spaces available to the school and the community, it's important for people to be able to explore different ways of learning the compliment their learning style. For example, the upcoming Natural History GCSE will be able to inspire a new generation into considering careers in a nature based industry and for those who may connect with a practical based career path.



Image of similar shelter in-situ



Plans and Elevations of shelter for forest school



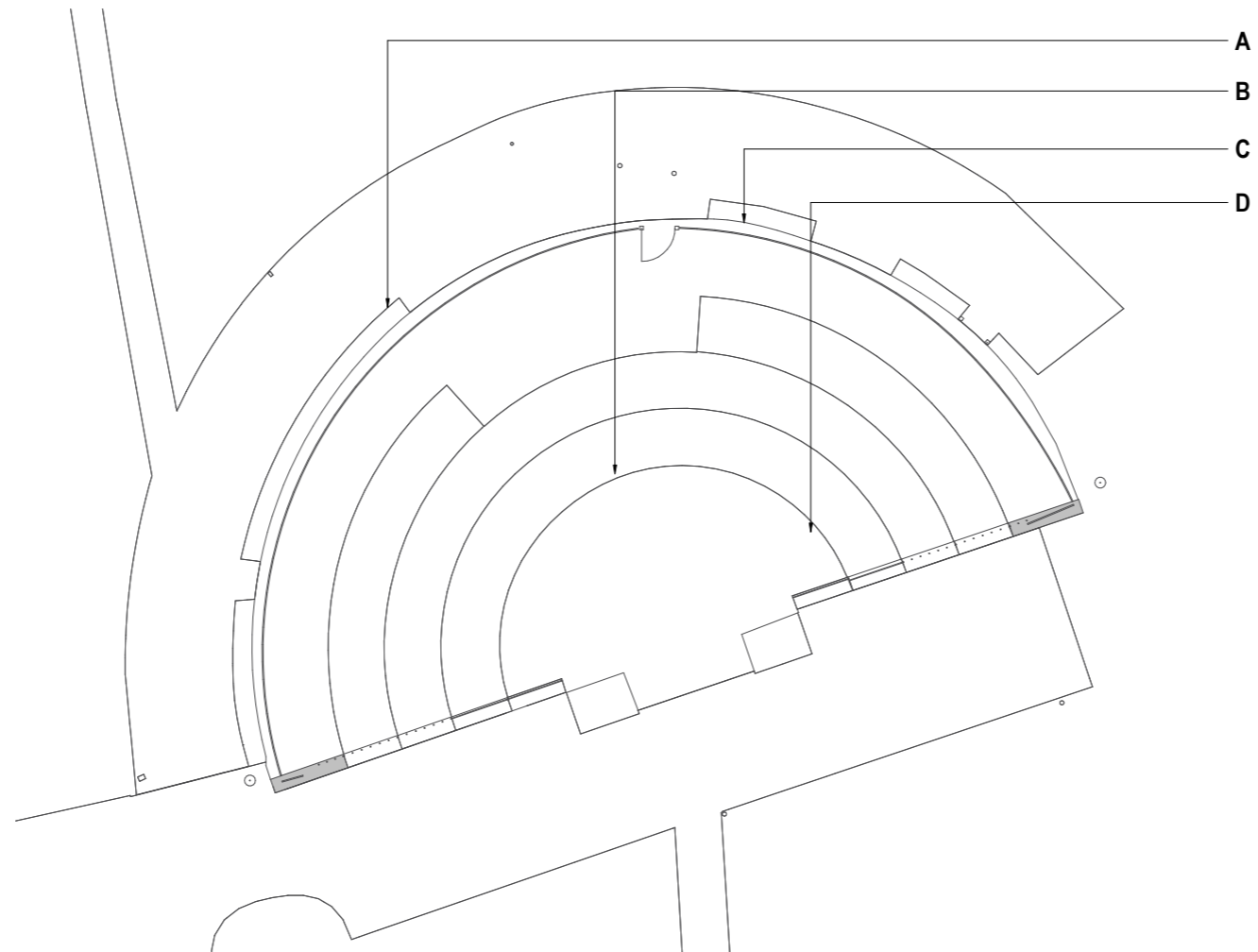
Location of Forest School within the Kneller masterplan

14 - Bandstand

14 Bandstand

Photos and Description of work

The bandstand is an existing feature within the site which was used by the Royal Military School of Music for outdoor performances. It is proposed that the existing structure is retained, with minor alterations; removing the metal frames and poles on the top level of the bandstand and repointing the paving. The bandstand will continue to be space for outdoor performance with school productions taking place here.



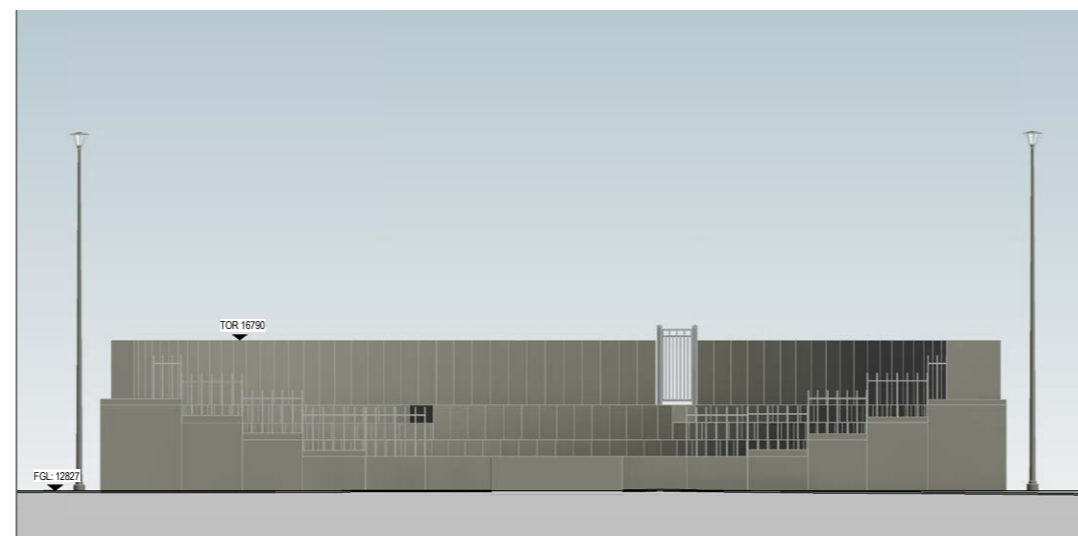
Plan of Bandstand



Front of Bandstand



Rear of Bandstand



Front, southern elevation of bandstand



View of performance space on Bandstand

15 - Materials and Specification

15 Materials and Specification

Material Images

A key element to the design proposal is the materials palette to relate to the surrounding context and provide cohesion between the various new elements.

Buildings housing classrooms will differ in architectural detail from those housing sport or performing arts. To ensure the design of the new campus on the Kneller Hall site is cohesive and the school seen as being formed of a suite of buildings related to each other, a material palette has been developed which has been applied to all new buildings within the proposals.

The materiality of the extensions to the listed buildings has been chosen to contrast with the listed buildings, clearly defining the contemporary additions. These buildings are predominantly designed using metal standing seam cladding in a pale bronze coloured finish.

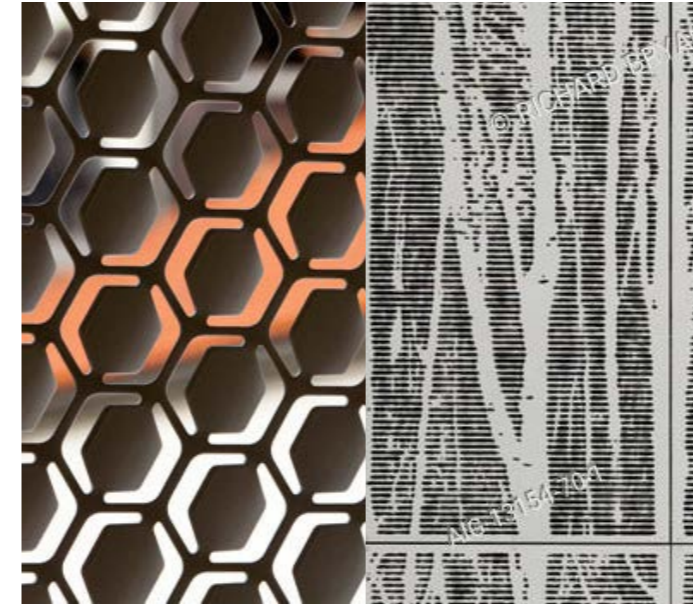
The two larger new buildings; the teaching block and sports centre use brick as the main material. This ties them in with the existing buildings on the site which are all built of brick regardless of the age of the buildings. A lighter buff brick has been chosen which contrasts with the historically significant Kneller Hall but compliments the stone dressings as well as the brick used in the school hall, the closest building in proximity to the sports centre and teaching block.

Brickwork detailing as well as pre-cast concrete bands are used to articulate the elevational detail of these buildings. Standing seam metal cladding is used to breakup the mass of these larger buildings which match the material used in the listed building extensions.

A perforated laser cut metal panel pattern (design to be finalised) is used throughout the suite of buildings becoming a consistent theme across the whole campus.



Metal cladding with protruding fins



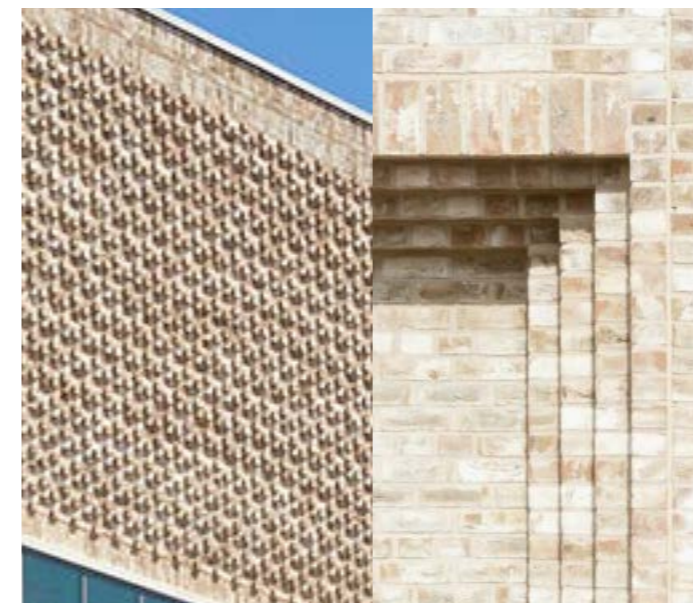
Design inspiration for perforated metal panel



Standing seam metal cladding



Buff Brick and pre-cast banding



Protruding Header brickwork pattern Stepped Buff brick detail






Buff brick and window with metal side panel

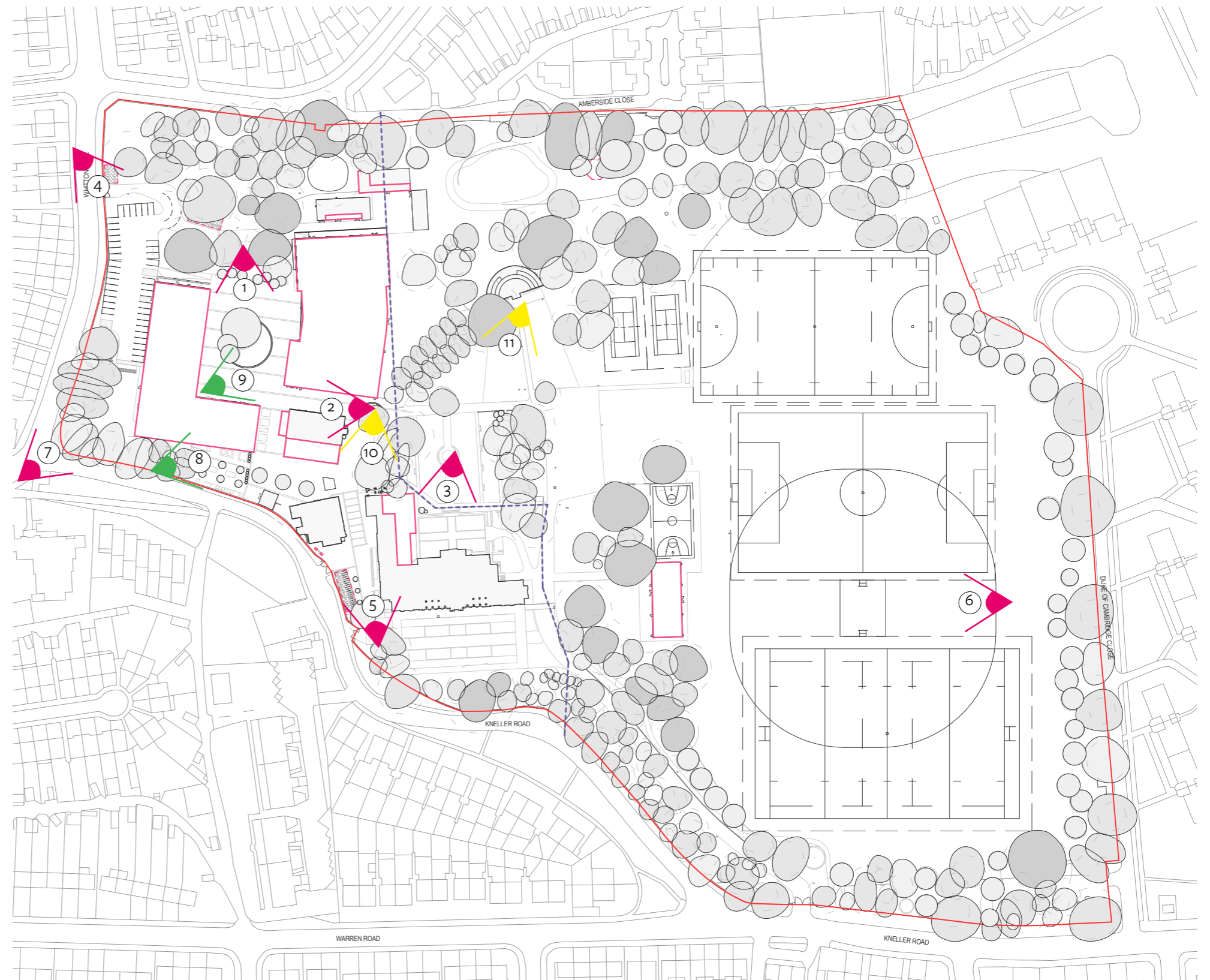
16 - Computer Generated Images

16 Computer generated Images (CGIs) Location Plan

A number of views have been produced to show the proposed buildings in the context of the site. A number of professional CGIs have been generated as well as some artist impressions to show the architectural intent of our designs. Finally some simple massing views have been created at the request of planning officers.

KEY

-  CGIs
-  Artists impressions
-  Massing Views



16 CGIs
01 - Formal Courtyard



16 CGI's

02 - Existing View School Hall (Former Band Practice Hall)



16 CGIs

02 - School Hall, Swimming Pool, Teaching Block Vista



16 CGI's

03 - Existing View Kneller Hall



16 CGIs

03 - Proposed View Kneller Hall

