

LEGEND

- PLANNING APPLICATION RED LINE
- METROPOLITAN OPEN LAND (MOL) DEMARKATION LINE

SOFT LANDSCAPE

| | Approx. Area (m ²) |
|-----------------------------|--------------------------------|
| WILDFLOWER MEADOW | 24176 |
| ACID GRASSLAND | 21441 |
| AMENITY LAWN | 20245.25 |
| AMENITY GARDEN PLANTING | 61.05 |
| PLANTERS | 407.62 |
| FLOWERING LAWN | 3488.54 |
| BORDER PLANTING | 331 |
| GREEN ROOF | 3057.73 |
| GREEN WALL/ CLIMBING PLANTS | 25 |
| WETLAND SEED MIX | 935 |

TREE STRATEGY

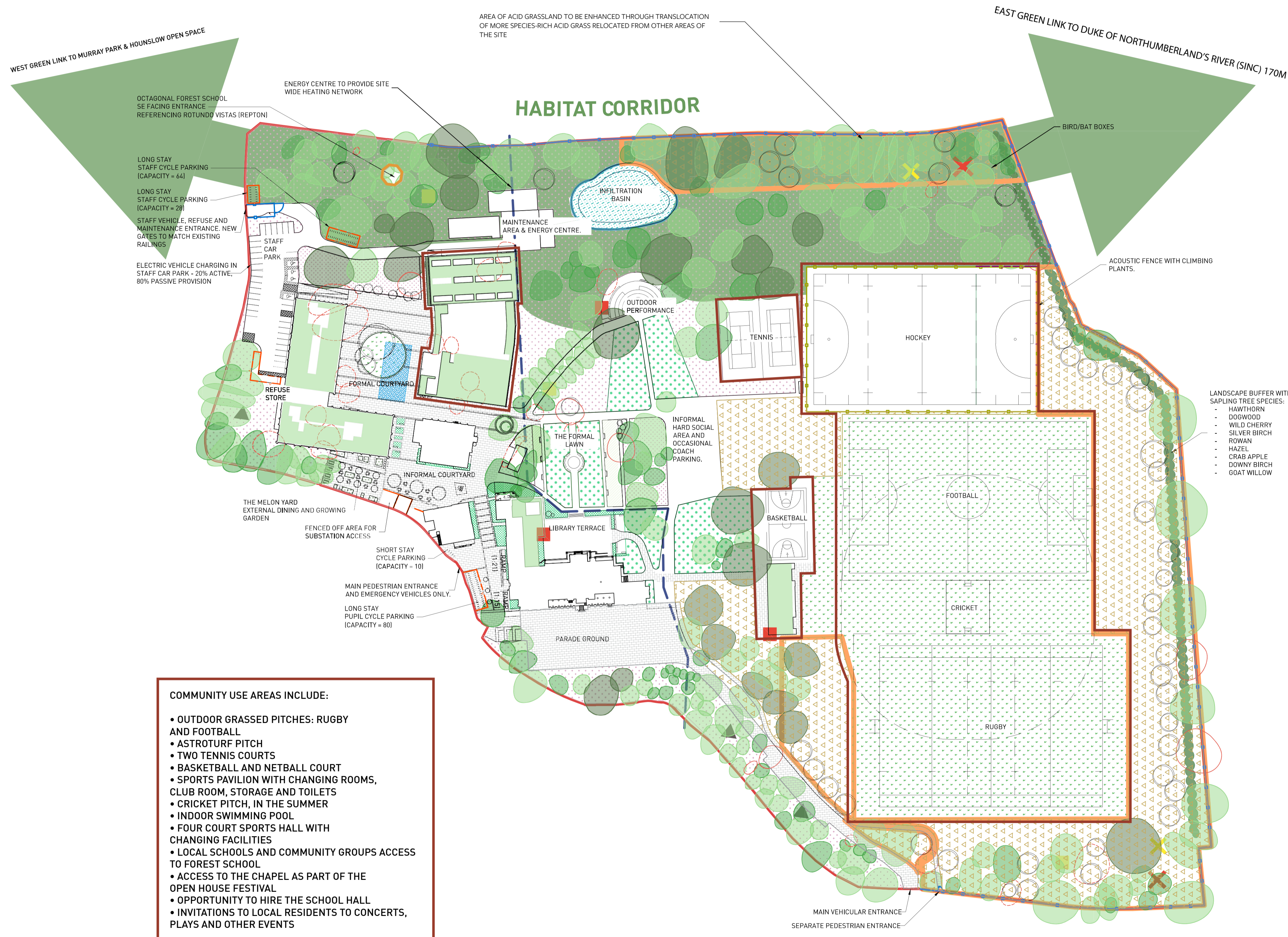
| | No. Trees |
|--|-----------|
| EXISTING TREE (CATEGORY A) | 28 |
| EXISTING TREE (CATEGORY B) | |
| EXISTING TREE (CATEGORY C) | |
| PROPOSED NATIVE HEDGEROW - 322m ² | |
| EXISTING TREE/ HEDGES (REMOVED) | 28 |
| PROPOSED TREE | 64 |

SUSTAINABLE DRAINAGE

| | Approx. Area (m ²) |
|--------------------|--------------------------------|
| INFILTRATION BASIN | 935 |
| PERMEABLE PAVING | 7706.78 |
| SOAKAWAY | 264 |

ECOLOGICAL ENHANCEMENT

- RETAINED ACID GRASSLAND
- INSECT BOXES
- BIRD BOXES
- BAT BOXES ON BUILDINGS
- BAT BOXES ON TREES
- LOG PILES FOR REPTILES



COMMUNITY USE AREAS INCLUDE:

- OUTDOOR GRASSED PITCHES: RUGBY AND FOOTBALL
- ASTROTURF PITCH
- TWO TENNIS COURTS
- BASKETBALL AND NETBALL COURT
- SPORTS PAVILION WITH CHANGING ROOMS, CLUB ROOM, STORAGE AND TOILETS
- CRICKET PITCH, IN THE SUMMER
- INDOOR SWIMMING POOL
- FOUR COURT SPORTS HALL WITH CHANGING FACILITIES
- LOCAL SCHOOLS AND COMMUNITY GROUPS ACCESS TO FOREST SCHOOL
- ACCESS TO THE CHAPEL AS PART OF THE OPEN HOUSE FESTIVAL
- OPPORTUNITY TO HIRE THE SCHOOL HALL
- INVITATIONS TO LOCAL RESIDENTS TO CONCERTS, PLAYS AND OTHER EVENTS

STAGE 3

0 1:1000 50m

| REVISION | DATE | DESCRIPTION | ARCHITECT | PARTNER |
|----------|----------|---------------------|-----------|---------|
| S0 P1 | 20/09/22 | ISSUED FOR PLANNING | CM | ADP |
| S0 P2 | 21/09/22 | ISSUED FOR PLANNING | CM | ADP |
| S0 P3 | 27/09/22 | ISSUED FOR PLANNING | CM | ADP |

CHECK ALL DIMENSIONS AND VERIFY ON SITE. REPORT ANY ERRORS OR OMISSIONS

adp 33a Vittoria Street
Birmingham
B1 3ND

T +44 (0) 121 234 6440
E birmingham@adp-architecture.com
www.adp-architecture.com

JOB TITLE: **KNELLER HALL**

DRAWING TITLE: **GIS LANDSCAPE PLAN**

SCALE: **1:1000** DRAWING SHEET SIZE: **A1**

| JOB CODE: | DRAWING NUMBER: | REVISION: |
|---------------|----------------------------|--------------|
| 001506 | ADP-XX-XX-DR-L-1905 | S0 P3 |

This line should measure 100mm along x and y axis when printed