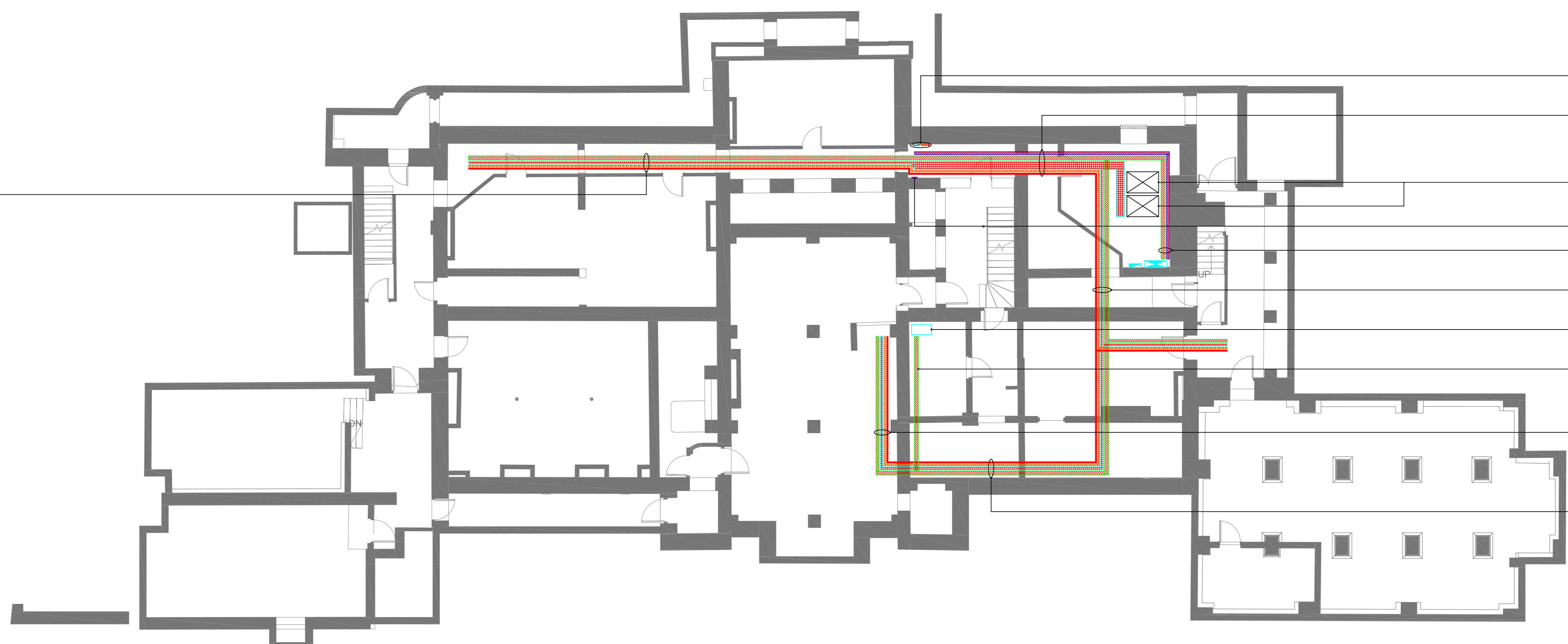
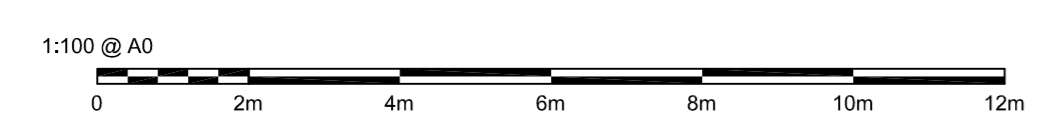


TOP TO BOTTOM:
 SUBMAN CABLE TRAY FOR DATA
 SUBMAN CABLE TRAY FOR FIRE ALARM
 SUBMAN CABLE TRAY FOR LIGHTING & POWER
 SUBMAN CABLE TRAY FOR DATA



- LEFT TO RIGHT:
 SUBMAN CABLE TRAY FOR DATA FROM BELOW AND TO ABOVE
 SUBMAN CABLE TRAY FOR DATA FROM BELOW AND TO ABOVE
 SUBMAN CABLE TRAY FOR DATA FROM BELOW AND TO ABOVE
- TOP TO BOTTOM:
 SUBMAN CABLE TRAY FOR DATA
 SUBMAN CABLE TRAY FOR LIGHTING & POWER
 SUBMAN CABLE TRAY FOR DATA
 SUBMAN CABLE TRAY FOR DATA
- 1 NOS. 6U IT CABINETS
 2 NOS. 6U IT CABINETS
 2 NOS. 6U IT CABINETS
- 2000mm CABLE TRAY FOR SUBMAN FROM BELOW AND TO ABOVE
- LEFT TO RIGHT:
 SUBMAN CABLE TRAY FOR DATA FROM BELOW AND TO ABOVE
 SUBMAN CABLE TRAY FOR DATA FROM BELOW AND TO ABOVE
- LEFT TO RIGHT:
 SUBMAN CABLE TRAY FOR DATA FROM BELOW AND TO ABOVE
 SUBMAN CABLE TRAY FOR DATA FROM BELOW AND TO ABOVE
 SUBMAN CABLE TRAY FOR DATA FROM BELOW AND TO ABOVE
- BATTERY STORAGE FOR
 FIRE ALARM SYSTEMS
- 1000mm CABLE TRAY FOR DATA FROM BELOW AND TO ABOVE
- LEFT TO RIGHT:
 SUBMAN CABLE TRAY FOR DATA FROM BELOW AND TO ABOVE
 SUBMAN CABLE TRAY FOR DATA FROM BELOW AND TO ABOVE
 SUBMAN CABLE TRAY FOR DATA FROM BELOW AND TO ABOVE
- TOP TO BOTTOM:
 SUBMAN CABLE TRAY FOR DATA FROM BELOW AND TO ABOVE
 SUBMAN CABLE TRAY FOR DATA FROM BELOW AND TO ABOVE
 SUBMAN CABLE TRAY FOR DATA FROM BELOW AND TO ABOVE



- STANDARD NOTES**
- DO NOT SCALE FROM THIS DRAWING. CONFIRM ALL DIMENSIONS AND STRUCTURAL INFORMATION ON SITE. IF IN DOUBT ASK BEFORE ACTING.
 - THIS DRAWING IS TO BE READ IN CONJUNCTION WITH THE APPROPRIATE WBSHIELDS REPORT AND SCHEDULES.
- NOTES**
- THE ELECTRICAL INSTALLATION SHALL COMPLY WITH BS7671:2018 18TH EDITION.
 - THE ARCHITECTURAL BACKGROUND SHOWN IS ONLY FOR REFERENCE. THE CONTRACTOR SHALL REFER TO THE ARCHITECT'S PACKAGE FOR FULL AND FINAL DESIGN OF ALL ARCHITECTURAL ELEMENTS.
- LEGEND**
- SUBMAN CABLE TRAY (SIZE AS DENOTED ON DRAWING)
 - LIGHTING & POWER CABLE TRAY (SIZE AS DENOTED ON DRAWING)
 - FIRE ALARM CABLE TRAY (SIZE AS DENOTED ON DRAWING)
 - DATA CABLE TRAY (SIZE AS DENOTED ON DRAWING)
 - ANCILLARY SERVICES CABLE TRAY (SIZE AS DENOTED ON DRAWING)
 - DADO TRUNKING (REFER TO SPEC FOR FURTHER DETAILS)
 - SET UP
 - SET DOWN

REV	DATE	BY	DESCRIPTION	CHK	APP
P2	14/09/22	WC	FOR PLANNING	VS	AG
P1	05/09/22	WC	DRAFT FOR PLANNING	VS	AG

DRAWING STATUS: FOR PLANNING

WB | SHIELDS

10 CHANCEL STREET, LONDON, SE1 0UX
 TEL: +44 (0)203 764 0801
 WWW.WBSHIELDS.COM

WB Shields Ltd is a Limited Company Registered in England and Wales No. 06489732. Registered Office: 20-22 Wentick Road, London, N1 0JU.

PROJECT: **KNELLER HALL FOR PLANNING**

TITLE: **MAIN BUILDING ELECTRICAL CONTAINMENT LAYOUT - BASEMENT**

DESIGNER:	WC	CHECKED:	VS
SCALE:	1:100 @ A0	DRAWN:	WC

DRAWING NO: **P2389_62.5_L-1_10** REV: P2