

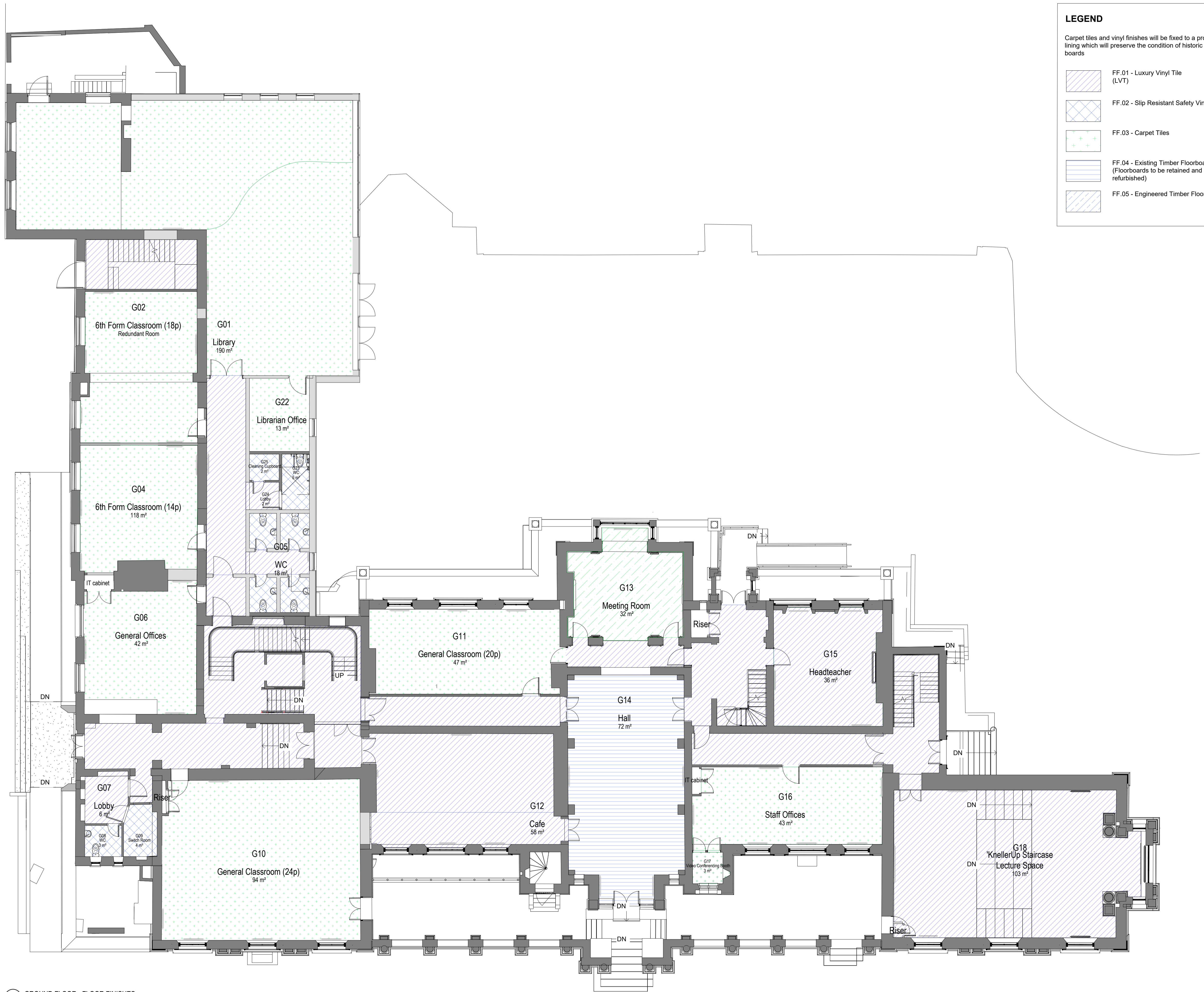
GENERAL NOTES

1. THIS DRAWING IS THE PROPERTY OF LXA LONDON, 2 LONDON BRIDGE, LONDON SE1 9RA. IT IS UNLAWFUL TO PRODUCE ITS CONTENTS IN ANY FORM, EXCEPT FOR THE INTENDED PURPOSE.
2. THIS DRAWING IS NOT TO BE SCALED UNLESS FOR PLANNING PURPOSES. THE DIMENSIONS ARE IN MILLIMETERS UNLESS OTHERWISE SPECIFIED.
3. ANY DISCREPANCIES ARE TO BE BROUGHT TO THE ATTN OF LXA AND RESOLVED BEFORE THE COMMENCEMENT OF ANY WORK IN THE DRAWING.
4. THIS DRAWING IS TO BE READ IN CONJUNCTION WITH RELEVANT DETAIL DRAWINGS AS MENTIONED IN THE DRAWING.
5. CONTRACTOR TO CONSTRUCT A MOCKUP FOR APPROVAL OF FINISHES & DETAILS, AND GET A SIGN OFF FROM CLIENTS & ARCHITECTS.
6. THIS DRAWING IS TO BE READ IN TANDM WITH THE DETAILS/SCHEDULES/SPECIFICATIONS AS REQUIRED.
7. LXA WILL ACCEPT NO LIABILITY FOR COPYRIGHT COMPLIANCE OR INFRINGEMENT ARISE FROM THE SUBSTITUTION OF LXA SPECIFIED PRODUCTS OR MATERIALS, BY ANY OTHER PARTY. SHOULD ANY SPECIFICATIONS BE SUBSTITUTED, THE CLIENT/CONTRACTOR WILL ASSUME FULL LIABILITY.


KEYPLAN

No.	Date	By	Issue/Revision Details

- LEGEND**
- Carpet tiles and vinyl finishes will be fixed to a protective lining which will preserve the condition of historic floor boards
-  FF.01 - Luxury Vinyl Tile (LVT)
 -  FF.02 - Slip Resistant Safety Vinyl
 -  FF.03 - Carpet Tiles
 -  FF.04 - Existing Timber Floorboards (Floorboards to be retained and refurbished)
 -  FF.05 - Engineered Timber Floorboards



GROUND FLOOR - FLOOR FINISHES
 SCALE: 1:100 @ A1




DRAWING TITLE:
 Kneller Hall
 Floor Finishes Plan - Ground Floor

PROJECT:
 Kneller Hall School
 65 Kneller Rd, Twickenham

CLIENT:
 Dukes Education

Rev No: - Date: 06.09.2022

Drawn: SM Checked: - Approved: -

Scale: 1:100@A1 Drawing No: LXA-1629-KH-120