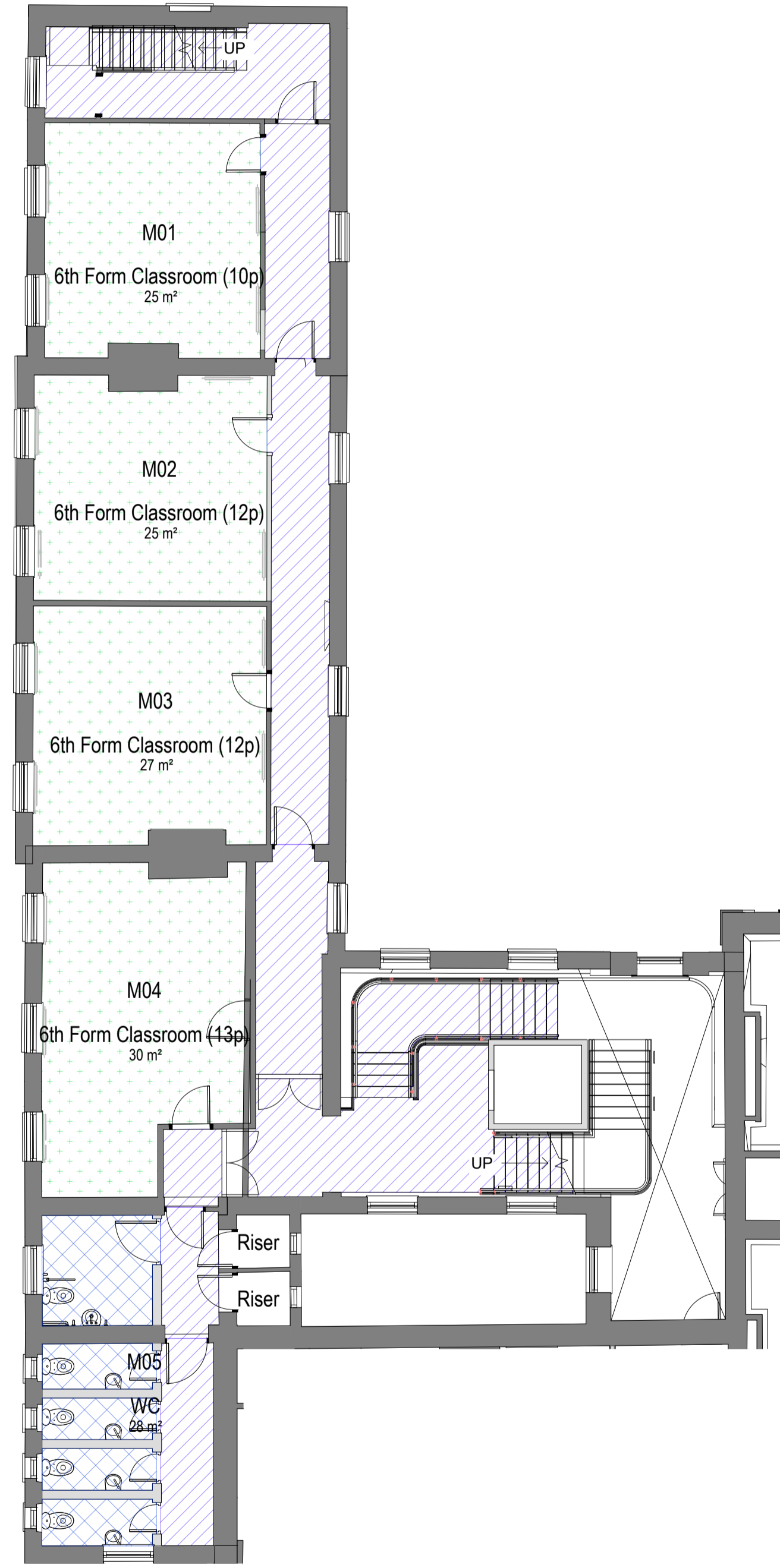


LEGEND

Carpet tiles and vinyl finishes will be fixed to a protective lining which will preserve the condition of historic floor boards

-  FF.01 - Luxury Vinyl Tile (LVT)
-  FF.02 - Slip Resistant Safety Vinyl
-  FF.03 - Carpet Tiles
-  FF.04 - Existing Timber Floorboards (Floorboards to be retained and refurbished)
-  FF.05 - Engineered Timber Floorboards



GENERAL NOTES

1. THIS DRAWING IS THE PROPERTY OF LXA LONDON 2 LONDON BRIDGE LONDON SE1 9PA. IT IS FORBIDDEN TO PRODUCE ITS CONTENTS IN ANY FORM, EXCEPT FOR THE INTENDED PURPOSE.
2. THIS DRAWING IS NOT TO BE SCALED UNLESS FOR PLANNING PURPOSES. THE DIMENSIONS ARE IN MILLIMETERS UNLESS OTHERWISE SPECIFIED.
3. ANY DISCREPANCIES ARE TO BE BROUGHT TO THE ATTN OF LXA AND RESOLVED BEFORE THE COMMENCEMENT OF ANY WORK.
4. THIS DRAWING IS TO BE READ IN CONJUNCTION WITH RELEVANT DETAIL DRAWINGS AS MENTIONED IN THE DRAWING.
5. CONTRACTOR TO CONSTRUCT A MOODUP FOR APPROVAL OF FINISHES & DETAILS AND GET A SIGN OFF FROM CLIENT'S ARCHITECTS.
6. THIS DRAWING TO BE READ IN CONJUNCTION WITH THE DETAIL SCHEDULES SPECIFICATIONS AS REQUIRED.
7. LXA WILL ACCEPT NO LIABILITY FOR COPYRIGHT INFRINGEMENT OR INFRINGEMENT FROM THE SUBSTITUTION OF LXA SPECIFIED PRODUCTS OR MATERIALS BY ANY OTHER PARTY. SHOULD ANY SPECIFICATIONS BE SUBSTITUTED, THE CLIENT/CONTRACTOR WILL ASSUME FULL LIABILITY.

KEYPLAN

REVISIONS

No.	Date	By	Issue/Revision Details

LXA LXA London
 2 London Bridge
 Montague Close
 London, SE1 9SA
 E: info@lxa.co.uk
 W: www.lxa.co.uk

DRAWING TITLE:
Kneller Hall
Floor Finishes - Mezzanine

PROJECT:
Kneller Hall School
65 Kneller Rd, Twickenham

CLIENT:
Dukes Education

Rev No.: -	Date: 06.09.2022
Drawn: SM	Checked: -
Scale: 1:100@A1	Drawing No.: LXA-1629-KH-122

