

PILLAR FOR SOLAR PV INVERTERS AND ISOLATORS LOCATED INTERNAL TO ENERGY CENTRE. REFER DETAIL 7.

PILLAR FOR ELECTRICAL VEHICLE CHARGERS AND ISOLATORS

ACCESS PANEL FROM SECOND FLOOR TO ROOF

CAT LADDER FROM LOWER ROOF TO UPPER ROOF

CAT LADDER FROM FIRST FLOOR TO ROOF

PILLAR ON ROOF TOP FOR SOLAR PV INVERTERS AND ISOLATORS REFER DETAIL 7

3m x 2m FOOTPRINT FOR ANTENNAS. SATELLITE DISHES PROVISION REFER DETAIL 6

PILLAR ON ROOF TOP FOR SOLAR PV INVERTERS AND ISOLATORS REFER DETAIL 7

ACCESS PANEL FROM SECOND FLOOR TO ROOF

EXISTING PILLAR TO BE DEMOLISHED. NEW PILLAR FOR EXTERNAL LIGHTING TO BE INSTALLED

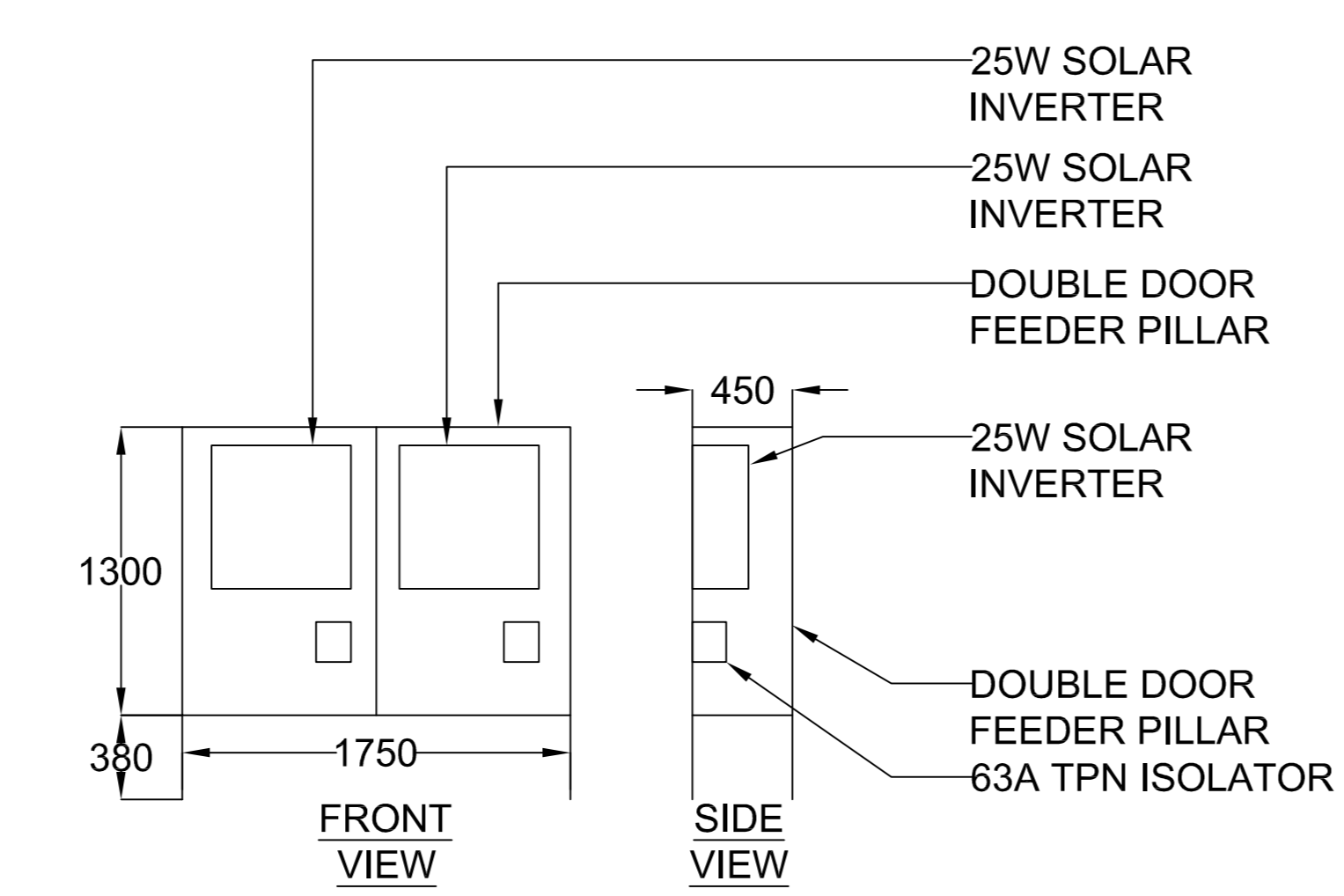
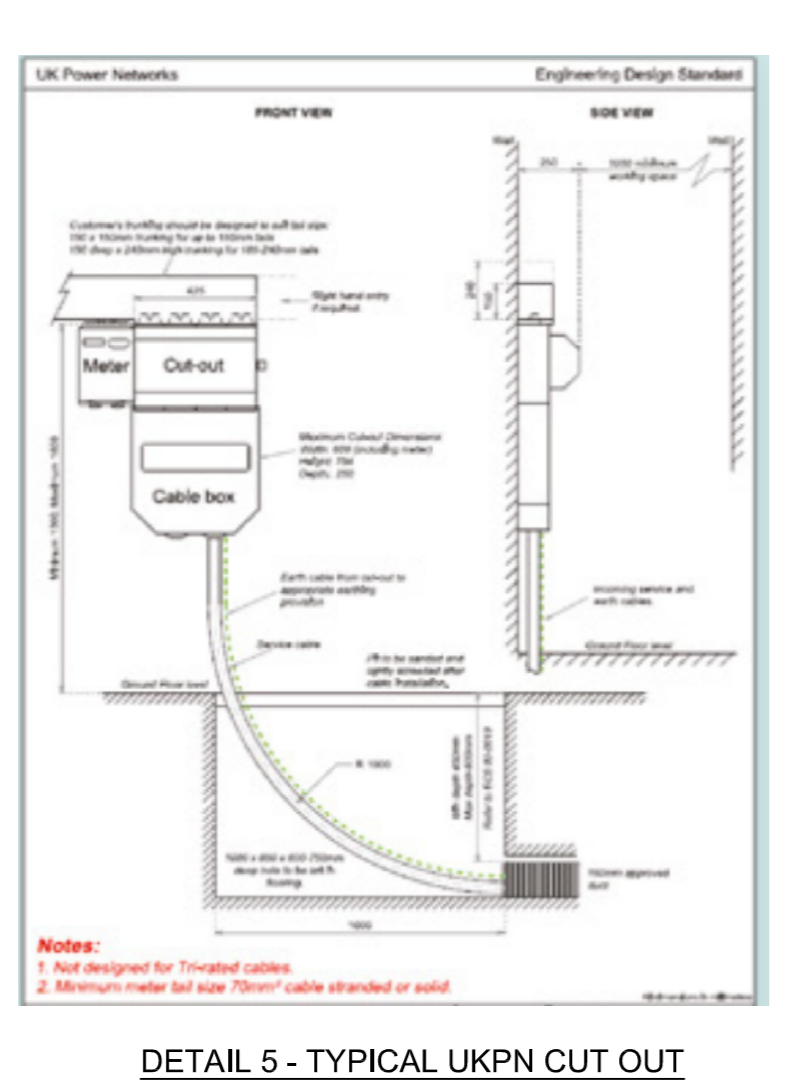
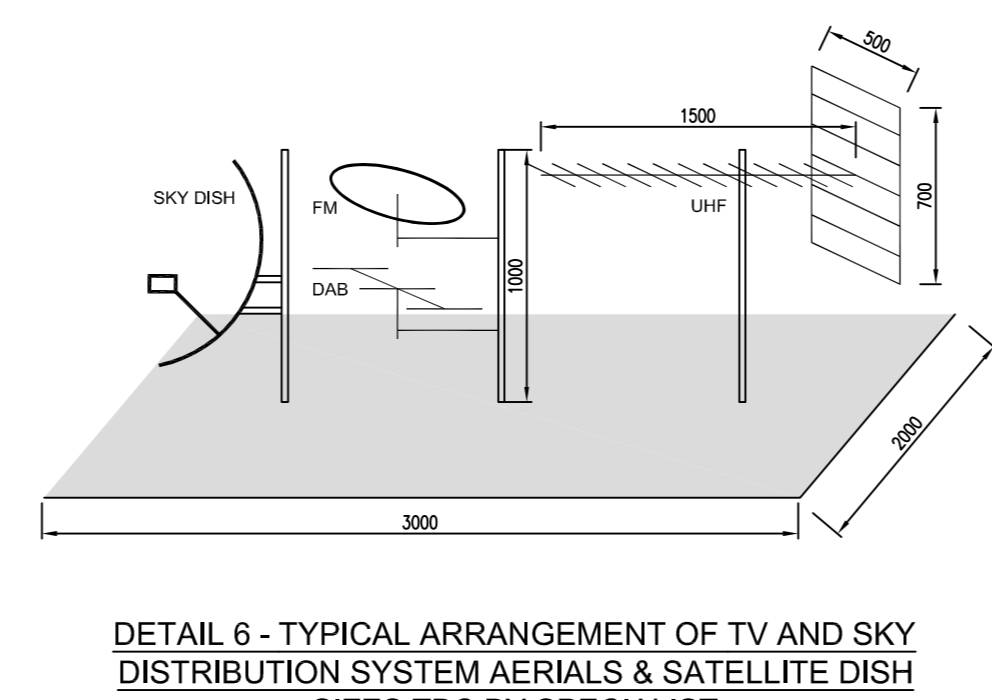
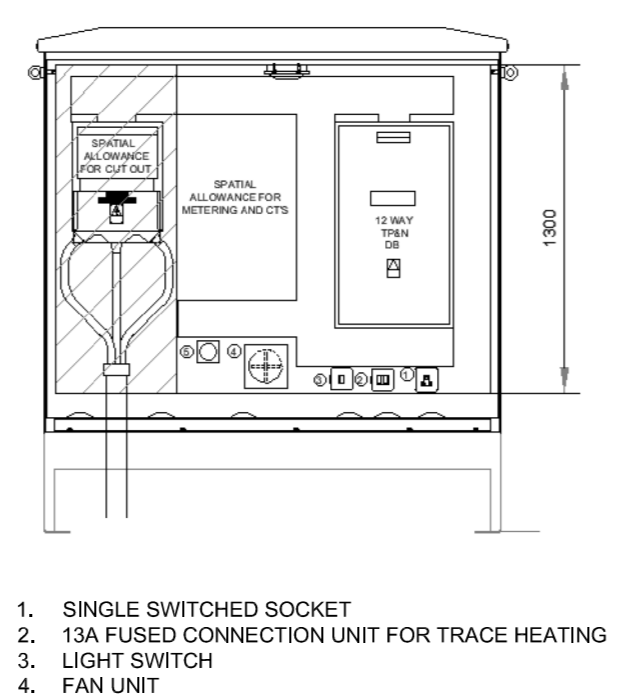
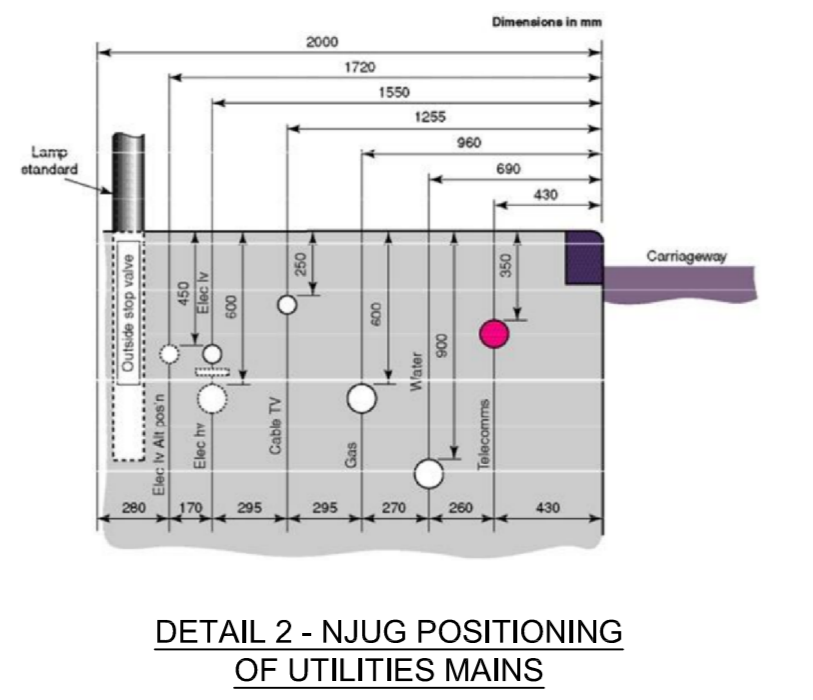
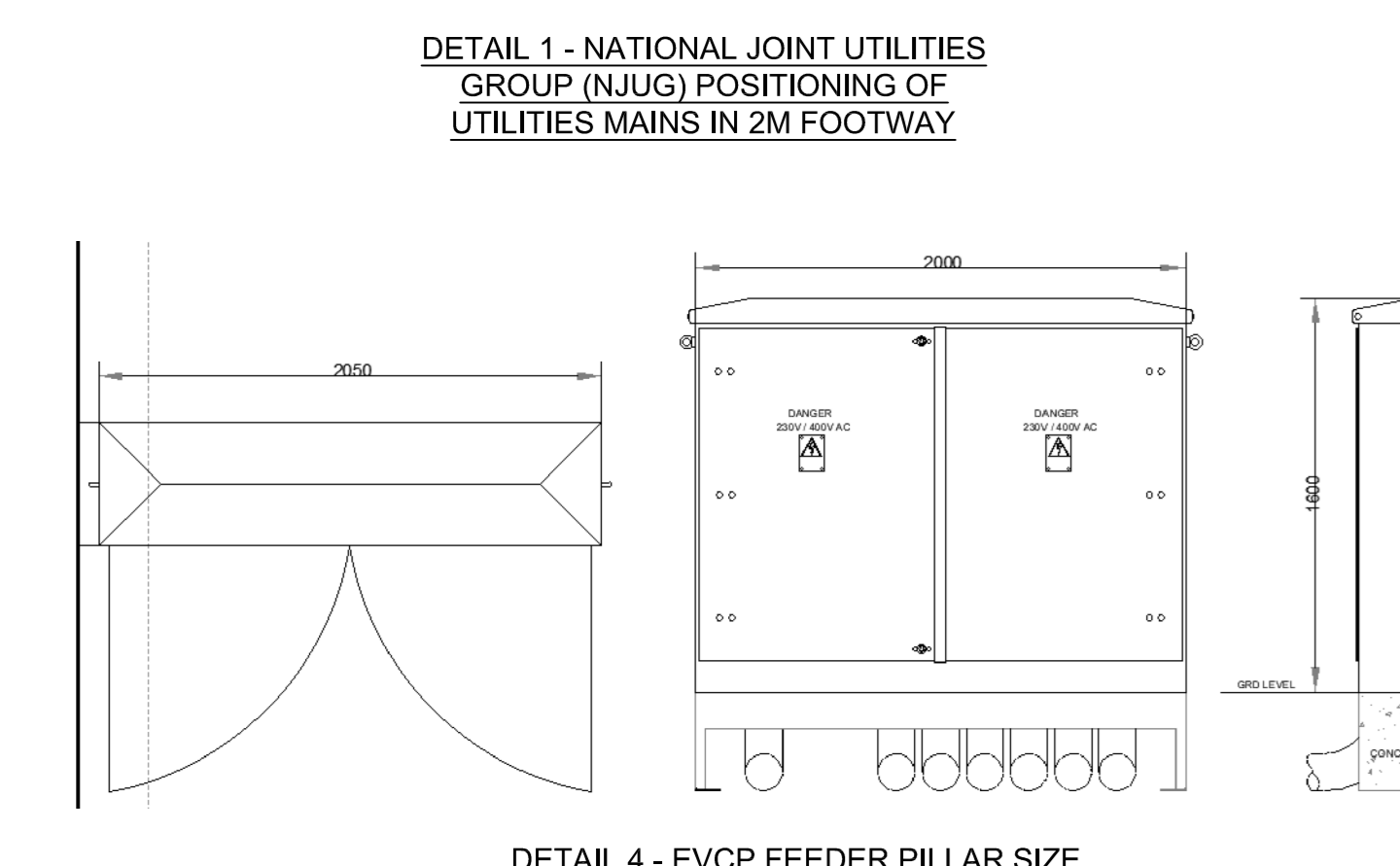
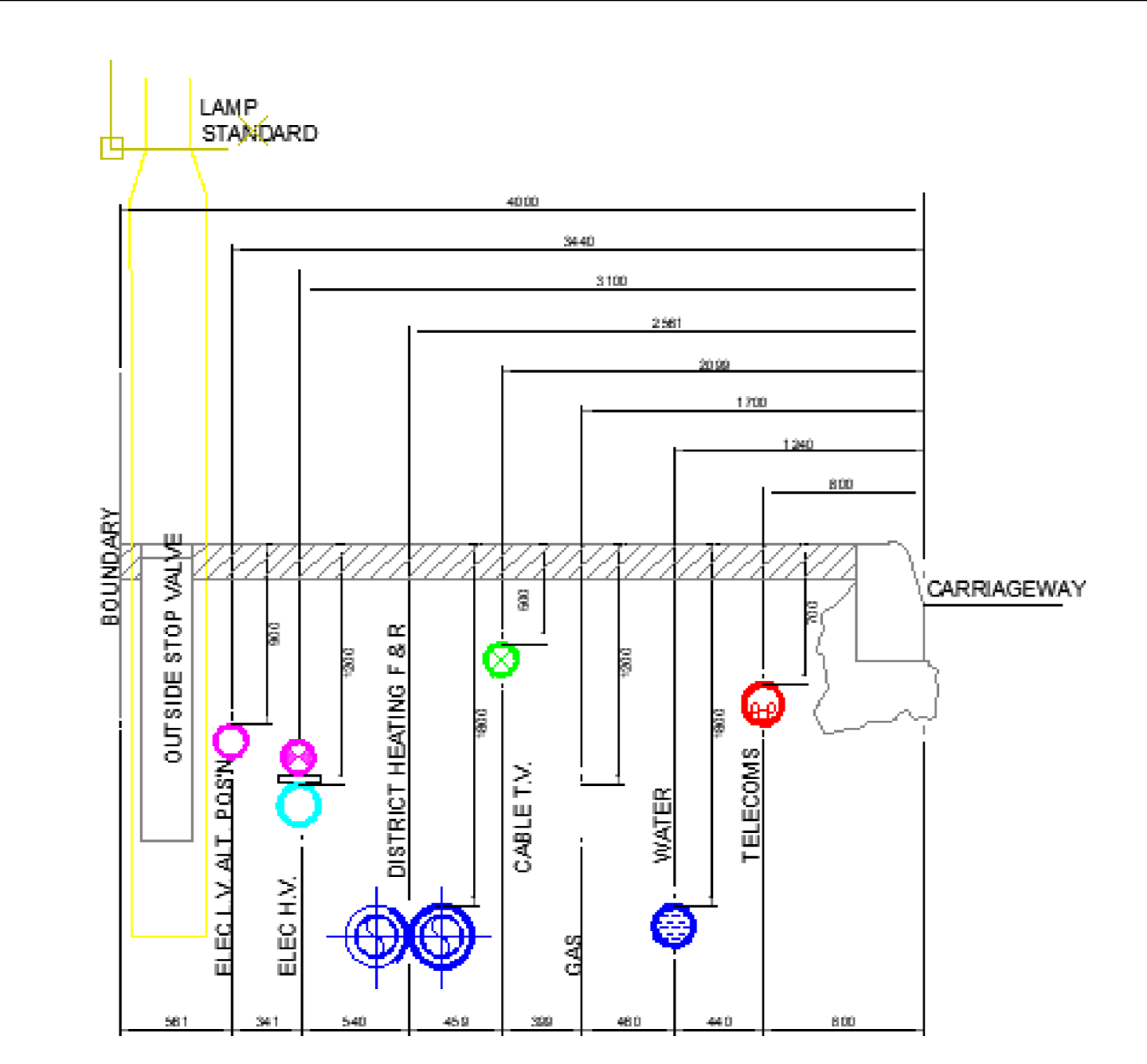
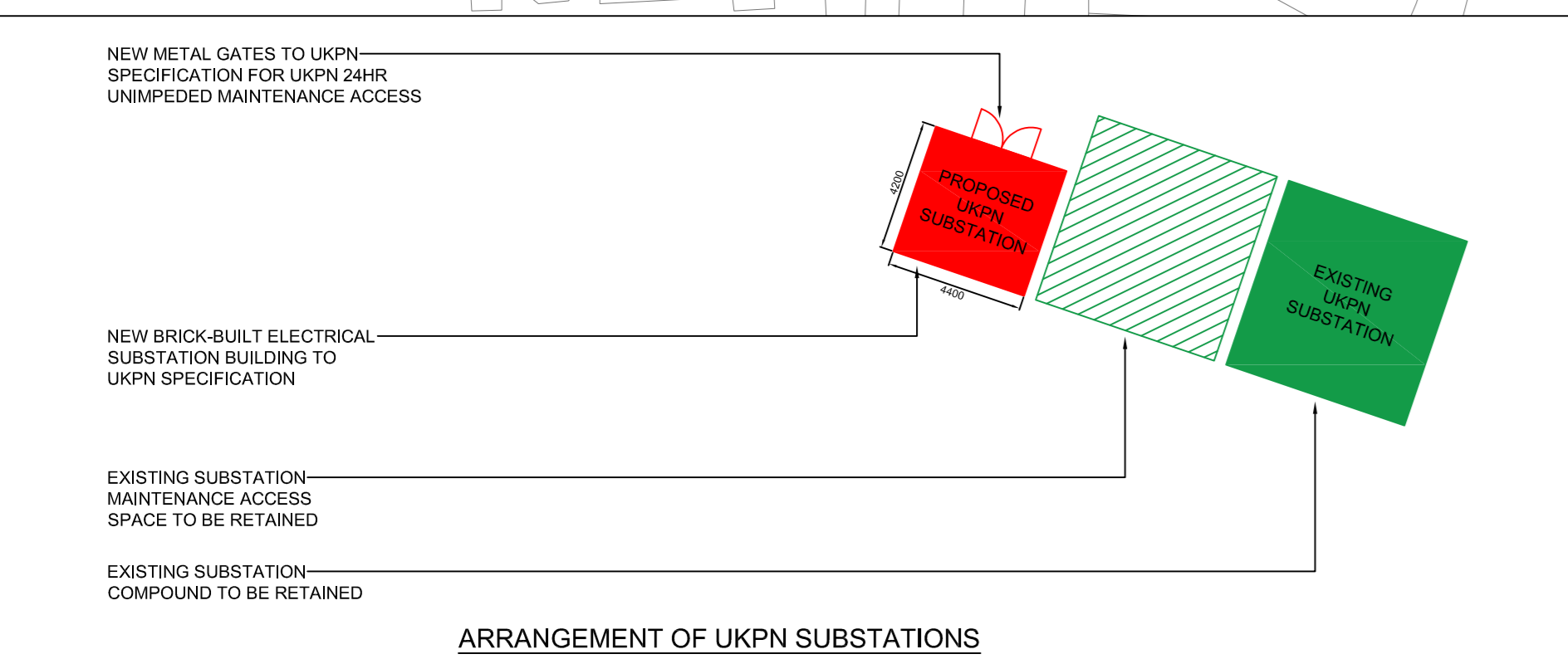
EXISTING SUBSTATION COMPOUND TO BE RETAINED AND EXTENDED (SEE SHEET 01)

NEW METAL GATES TO UKPN. SPECIFICATION FOR UKPN 24HR UNIMPEDED MAINTENANCE ACCESS

NEW BRICK-BUILT ELECTRICAL SUBSTATION BUILDING TO UKPN SPECIFICATION

EXISTING SUBSTATION MAINTENANCE ACCESS SPACE TO BE RETAINED

EXISTING SUBSTATION COMPOUND TO BE RETAINED



STANDARD NOTES

- DO NOT SCALE FROM THIS DRAWING. CONFIRM ALL DIMENSIONS AND STRUCTURAL INFORMATION ON SITE. IF IN DOUBT ASK BEFORE ACTING.
- THIS DRAWING IS TO BE READ IN CONJUNCTION WITH THE APPROPRIATE WBSHIELDS REPORT AND SCHEDULES.

NOTES

- THE ELECTRICAL INSTALLATION SHALL COMPLY WITH BS7671:2018 18TH EDITION.
- REFER TO ARCHITECTS INFORMATION FOR DIMENSIONS AND FINAL COORDINATED LOCATIONS.
- REFER TO LANDSCAPE ARCHITECTS INFORMATION FOR DIMENSIONS AND FINAL COORDINATED LOCATIONS OF BOLLARD LIGHTS.
- REFER TO STRUCTURAL ENGINEERS INFORMATION FOR DIMENSIONS AND FINAL COORDINATED LOCATIONS OF UNDERGROUND PIPES.
- DESIGN OF CABLE TRENCH AND DUCTBANK TO SPECIALIST'S SPECIFICATION AND DETAIL.
- THE ELECTRICAL INSTALLATION SHALL BE CARRIED OUT IN ACCORDANCE WITH BS 7671.
- THE ELECTRICAL SUB-CONTRACTOR IS RESPONSIBLE FOR DETAILED DESIGN AND WORKING DRAWINGS AND COORDINATION.

LEGEND

- PROPOSED BUILDING LOCATION
- ENERGY CENTRE 2
- ENERGY CENTRE 1
- SPORTS & POOL HALL
- TEACHING BLOCK
- SCHOOL HALL
- GUARD HOUSE
- KNELLER HALL (MAIN BUILDING)
- SPORTS PAVILION
- PROPOSED & EXISTING TRANSFORMER ROOM
- 7.4KW TYPE 2 EV CHARGING STATION
- FEEDER PILLAR
- DUCTS FOR ELECTRICAL / INCOMING FEEDER / TELECOMMUNICATION / FIBRE OPTIC / DATA
- MANHOLE / CABLE DRAW PIT
- TRENCH WITH REMOVABLE COVER
- RESERVED FOR ELECTRIC VEHICLE
- SOLAR PV PANEL
- TV AND SKY DISTRIBUTION SYSTEM AERIALS & SATELLITE DISHES (REFER TO TYPICAL DETAIL)

DESIGN OF CABLE TRENCH AND DUCTBANK TO SPECIALIST'S SPECIFICATION AND DETAIL.

PO	14/09/22	WC	FOR PLANNING	VS	AG
PI	05/09/22	WC	DRAFT FOR PLANNING	VS	AG
REVI	DATE	BY	DESCRIPTION	CHK/APP	

DRAWING STATUS: FOR PLANNING

WBSHIELDS

10 CHANCEL STREET, LONDON, SE1 0UX
TEL: +44 (0)203 764 0801
WWW.WBSHIELDS.COM

WB Shields Ltd is a Limited Company Registered in England and Wales No. 06689732. Registered Office: 20-22 Westlock Road, London, N1 0AU.

PROJECT: KNELLER HALL FOR PLANNING

TITLE: COMBINED SERVICES SITE WIDE DISTRIBUTION

DESIGNER: WC	CHECKED: VS
SCALE: 1:500 @ A0	DRAWN: WC

DRAWING NO: P2389_00_X_1 REVI: P2

