

DETAIL A: TYPICAL BUILDER'S WORK OPENING FOR M&E SERVICES

- STANDARD NOTES**
- DO NOT SCALE FROM THIS DRAWING. CONFIRM ALL DIMENSIONS AND STRUCTURAL INFORMATION ON SITE, IF IN DOUBT ASK BEFORE ACTING.
 - THIS DRAWING IS TO BE READ IN CONJUNCTION WITH THE APPROPRIATE WBSHIELDS REPORT AND SCHEDULES.
- NOTES:**
- DRAWING IS BASED ON ARCHITECTURAL DRAWING 001506-ADP-01-B1-DR-A-xxxx-S2 P-2
 - BUILDER'S WORK OPENINGS SHOWN ON THIS DRAWING ARE INDICATIVE ONLY AND REFLECT DESIGN INTENT ONLY. ALL OPENING SIZES AND LOCATIONS MAY BE SUBJECT TO CHANGE PENDING DETAILED DESIGN.

- SYMBOLS:**
- BUILDERS WORK OPENING. REFER TO DETAIL A.
 - WALL MOUNTED THERMOSTAT CONTROLLER
 - CO2 SENSOR
 - RADIATOR
 - PIPEWORK DROPPING POINT
 - HEATING SYSTEM CONTROL VALVE

- DRAWING LINE TYPES:**
- HIGH LEVEL PIPEWORK
 - LOW LEVEL PIPEWORK - EITHER VISIBLE SURFACE MOUNTED OR CONCEALED WITHIN SKIRTING BOXING OUT. (REFER TO ARCHITECTS DRAWINGS FOR DETAILS)
 - LOW LEVEL PIPEWORK - WITHIN FLOOR VOID (PIPEWORK NOT VISIBLE)

- PIPEWORK TYPES:**
- LTHW (HEATING) F&R PIPEWORK TO SERVE RADIATORS (RED)
 - HOT WATER SUPPLY (HWS) PIPEWORK [YELLOW]
 - HOT WATER RETURN (HWR) PIPEWORK [ORANGE]
 - COLD WATER SUPPLY (CWS) PIPEWORK [BLUE]

- ANNOTATIONS**
- CWS COLD WATER SUPPLY PIPEWORK
 - HWS HOT WATER SUPPLY PIPEWORK
 - HWR HOT WATER RETURN PIPEWORK
 - LTHW F&R HEATING SYSTEM FLOW & RETURN PIPEWORK
 - F/A T/A FROM / TO ABOVE
 - F/B T/B FROM / TO BELOW
 - H/L L/L HIGH / LOW LEVEL

REV	DATE	BY	DESCRIPTION	CHK	APP
P3	22/09/22	ZS	FOR PLANNING	ZS	ES
P2	14/09/22	ZS	FOR PLANNING	ZS	ES
P1	12/09/22	ZS	DRAFT PLANNING	ZS	ES

DRAWING STATUS | **PLANNING**

WB SHIELDS

10 CHANCEL STREET, LONDON, SE1 0UX
 TEL: +44 (0)203 764 0801
 WWW.WBSHIELDS.COM

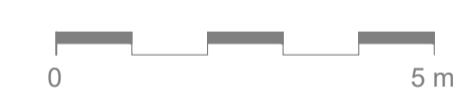
WB Shields Ltd is a Limited Company Registered in England and Wales No. 09498732. Registered Office: 20-22 Wenlock Road, London, N1 6GU.

PROJECT | **KNELLER HALL FOR PLANNING**

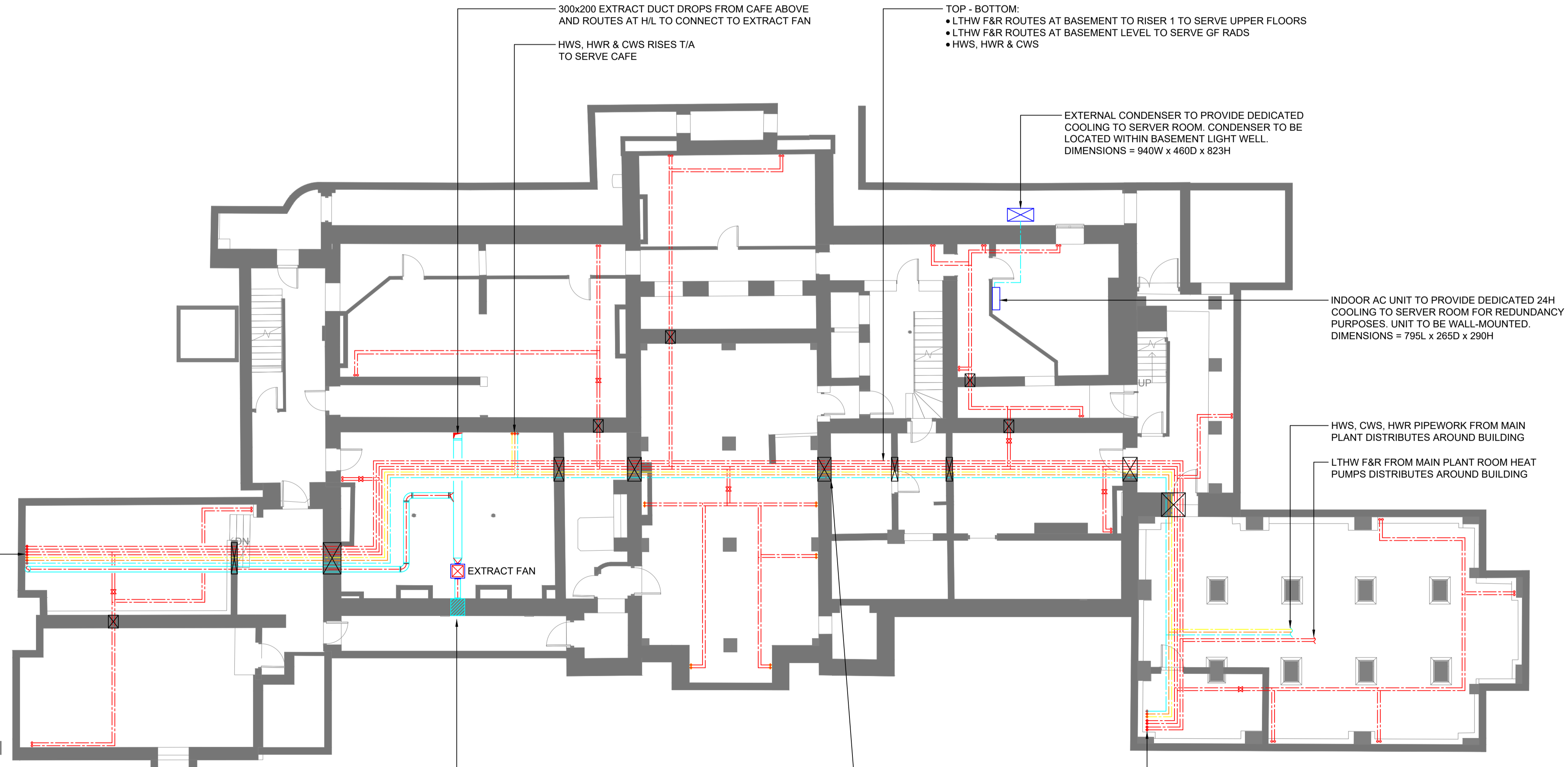
TITLE | **MAIN BUILDING MECHANICAL SERVICES DISTRIBUTION BASEMENT**

DESIGNER | ZS | CHECKED | ES
 SCALE | 1:100 @ A1 | DRAWN | TDS

DRAWING No | **P2389_50_L-1_10** | REV | P3



- TOP - BOTTOM (RISER 1):**
- LTHW F&R RISES F/B TO H/L AND ROUTES TO RISE UP IN RISER 1 TO SERVE UPPER FLOORS
 - LTHW F&R RISES F/B TO H/L TO SERVE L1 RADS
 - HWS, HWR & CWS RISES T/A TO SERVE LEVEL 1
 - 2000 WC EXTRACT DUCT DROPS F/A AND ROUTES AT H/L TO CONNECT TO EXTRACT FAN



300x200 EXTRACT DUCT DROPS FROM CAFE ABOVE AND ROUTES AT H/L TO CONNECT TO EXTRACT FAN

HWS, HWR & CWS RISES T/A TO SERVE CAFE

TOP - BOTTOM:

- LTHW F&R ROUTES AT BASEMENT TO RISER 1 TO SERVE UPPER FLOORS
- LTHW F&R ROUTES AT BASEMENT LEVEL TO SERVE GF RADS
- HWS, HWR & CWS

EXTERNAL CONDENSER TO PROVIDE DEDICATED COOLING TO SERVER ROOM. CONDENSER TO BE LOCATED WITHIN BASEMENT LIGHT WELL. DIMENSIONS = 940W x 460D x 823H

INDOOR AC UNIT TO PROVIDE DEDICATED 24H COOLING TO SERVER ROOM FOR REDUNDANCY PURPOSES. UNIT TO BE WALL-MOUNTED. DIMENSIONS = 795L x 265D x 290H

HWS, CWS, HWR PIPEWORK FROM MAIN PLANT DISTRIBUTES AROUND BUILDING

LTHW F&R FROM MAIN PLANT ROOM HEAT PUMPS DISTRIBUTES AROUND BUILDING

NEW BUILDERS WORK OPENING WITHIN BASEMENT LIGHTWELL AT FACADE FOR EXTRACT DUCT. LOUVRE DIMENSION REQUIRED : 500x500mm

BUILDERS WORK OPENING REQUIRED FOR SERVICES. REFER TO DETAIL A FOR EXAMPLE OF INDICATIVE SIZE REQUIRED. ALL OPENINGS SHOWN ON DRAWING ARE INDICATIVE AND SHALL BE CONFIRMED IN DETAILED DESIGN.

TOP - BOTTOM (RISER 2):

- HWS, HWR & CWS RISES T/A TO SERVE UPPER FLOORS
- LTHW F&R RISES T/A
- LTHW F&R SERVING OF GF RADS DROPS F/A TO ROUTE AT BASEMENT LEVEL