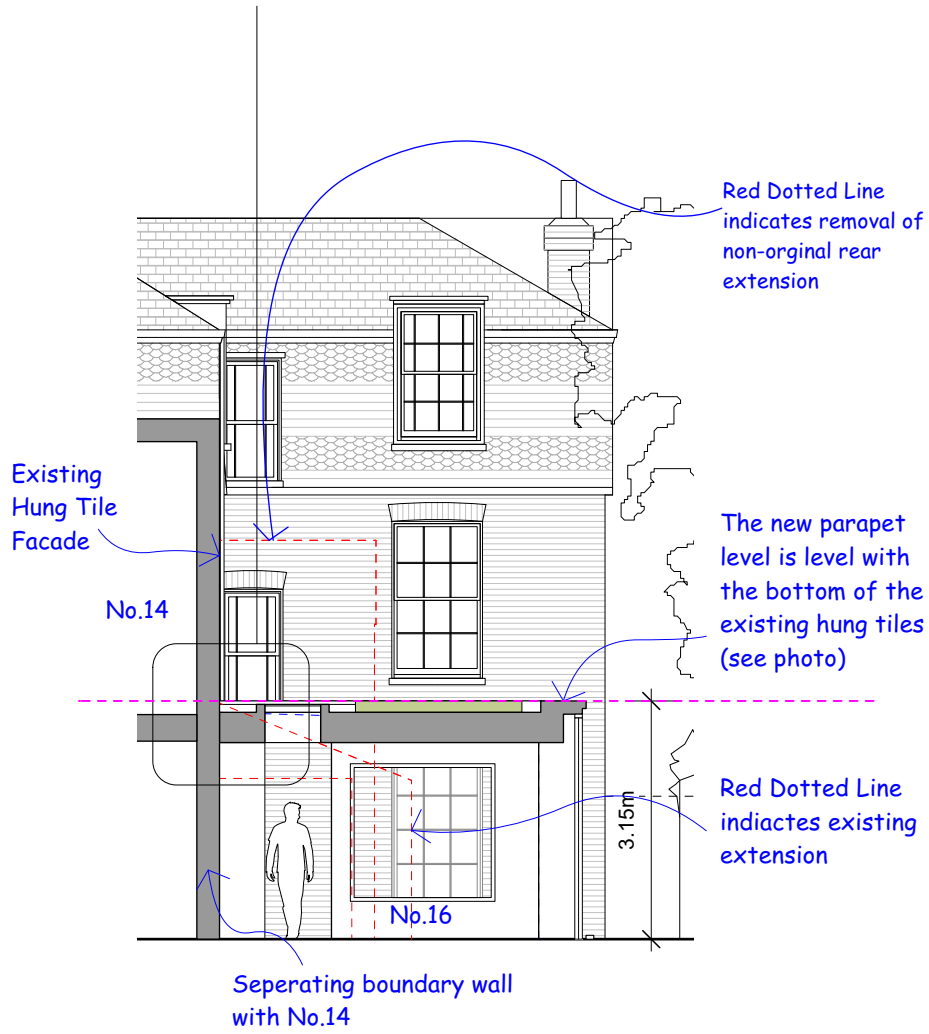
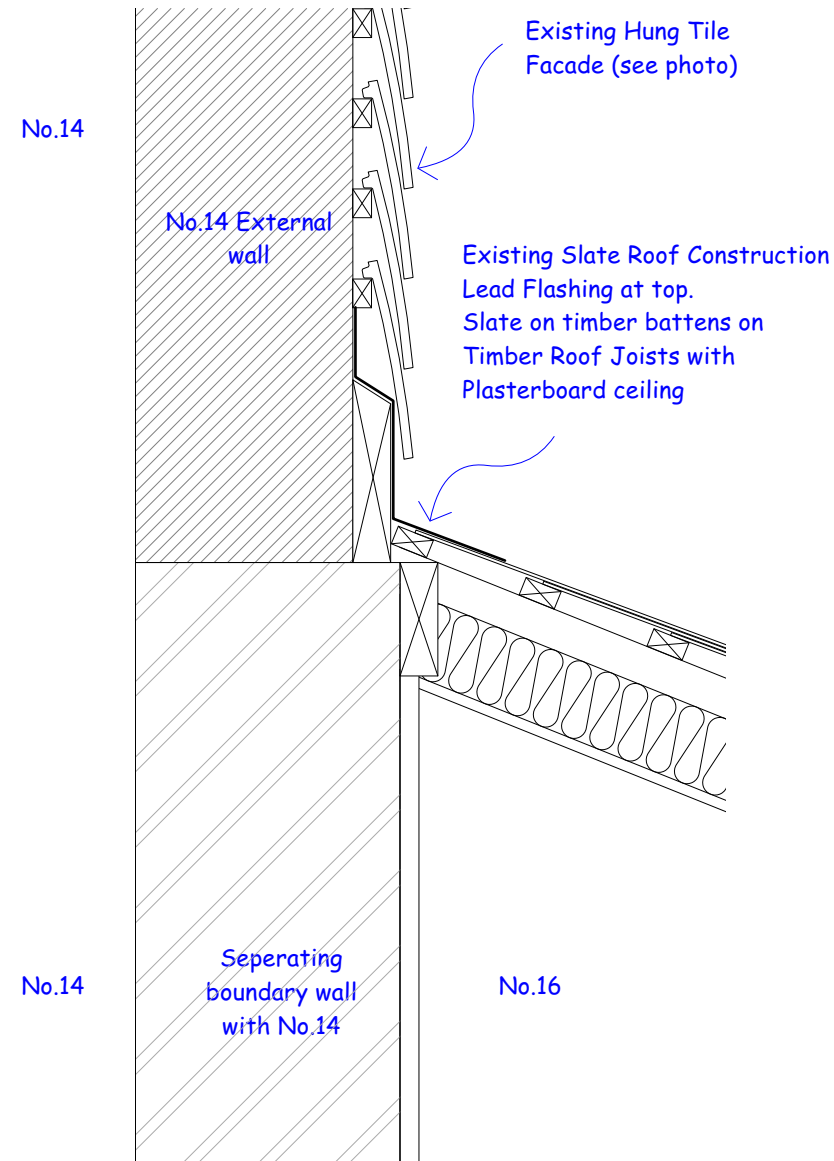
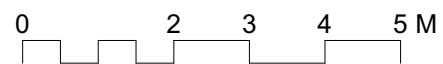


DETAIL C

Note - from 1:10 details opposite, no brickwork will be removed. No hung tiles will be removed. New Roof will utilise existing lead flashing to maintain weathering. Minimal intervention with existing.



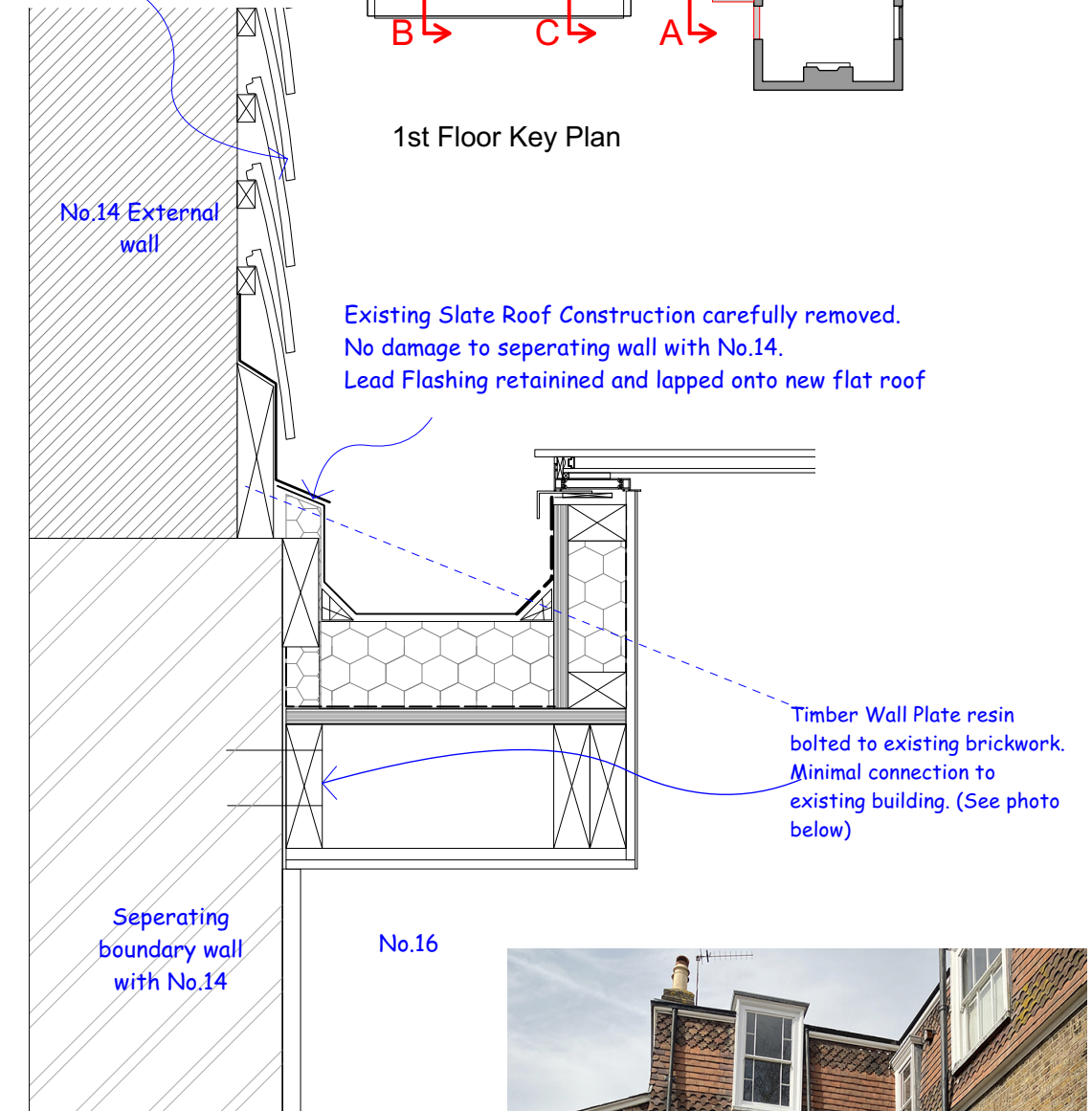
1 Proposed Rear Section C
Scale: 1:100



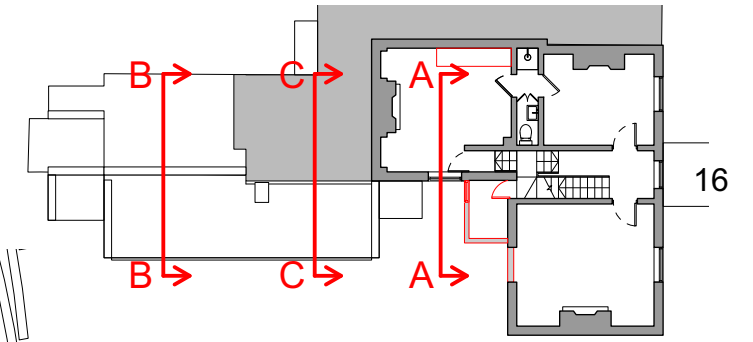
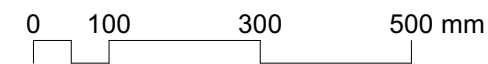
2 Existing Ridge Detail C
Scale: 1:10



Existing Hung Tile Facade retained (see photo)



3 Proposed Roof Ridge Detail C
Scale: 1:10



1st Floor Key Plan



Illustration of Timber Wall Plate