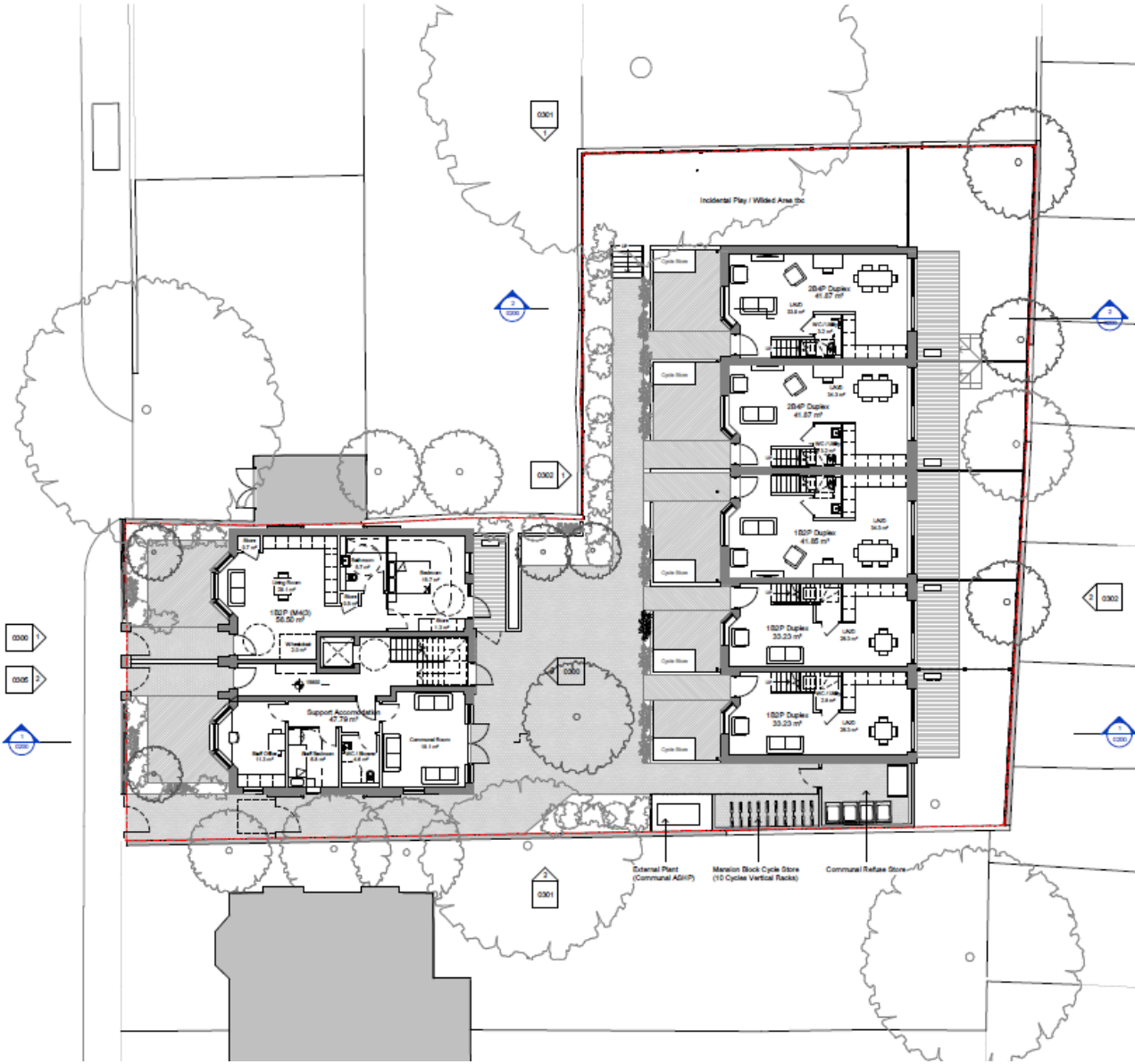


17 Appendices

17.1 Appendix 1 – Site Photographs



17.2 Appendix 2 – Development Plans



CONCEPT & SITE RESPONSE
SITE ORGANISATION - GROUND FLOOR

Accommodation Schedule Overview

Unit Count = 16 Units Total
Total Unit GIA - 904 sqm

Cycle Parking

It is proposed that a secure communal bike store will be located in the rear courtyard for use by the 'Mansion block' apartments. This will provide storage for 12 cycles on 2-tier racks, 1 for each unit within the block, plus 2 visitor spaces. The duplexes will be provided with a secure store in front of each unit, adjacent to the front amenity space.

Cycle parking requirement = 19 spaces + 1 visitor

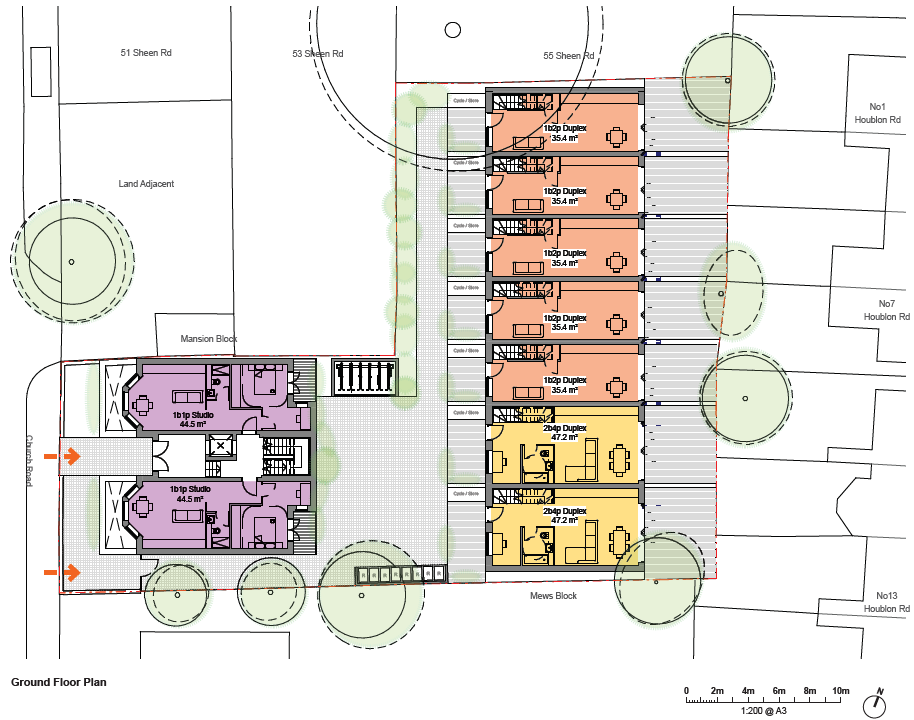
Refuse

The refuse store for the site is located within the communal courtyard adjacent to the cycle store.

Refuse calculation
19 x 17L = 1330L = 4 x 360L refuse bins

Recycling Calculation
12 to 17 households served requires 4 x 360L for all types of recycling.

Total = 8 x 360L bins

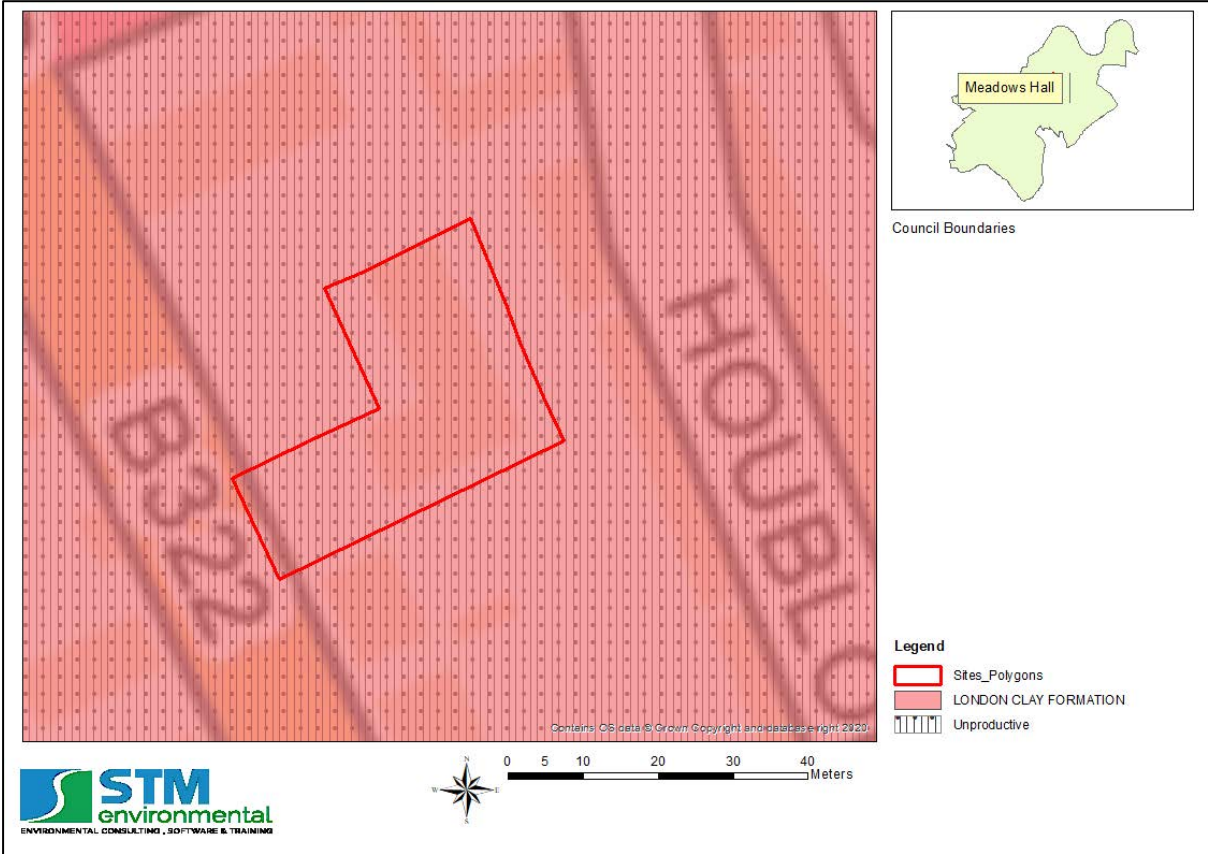


17.3 Appendix 3 – Environmental Characteristics

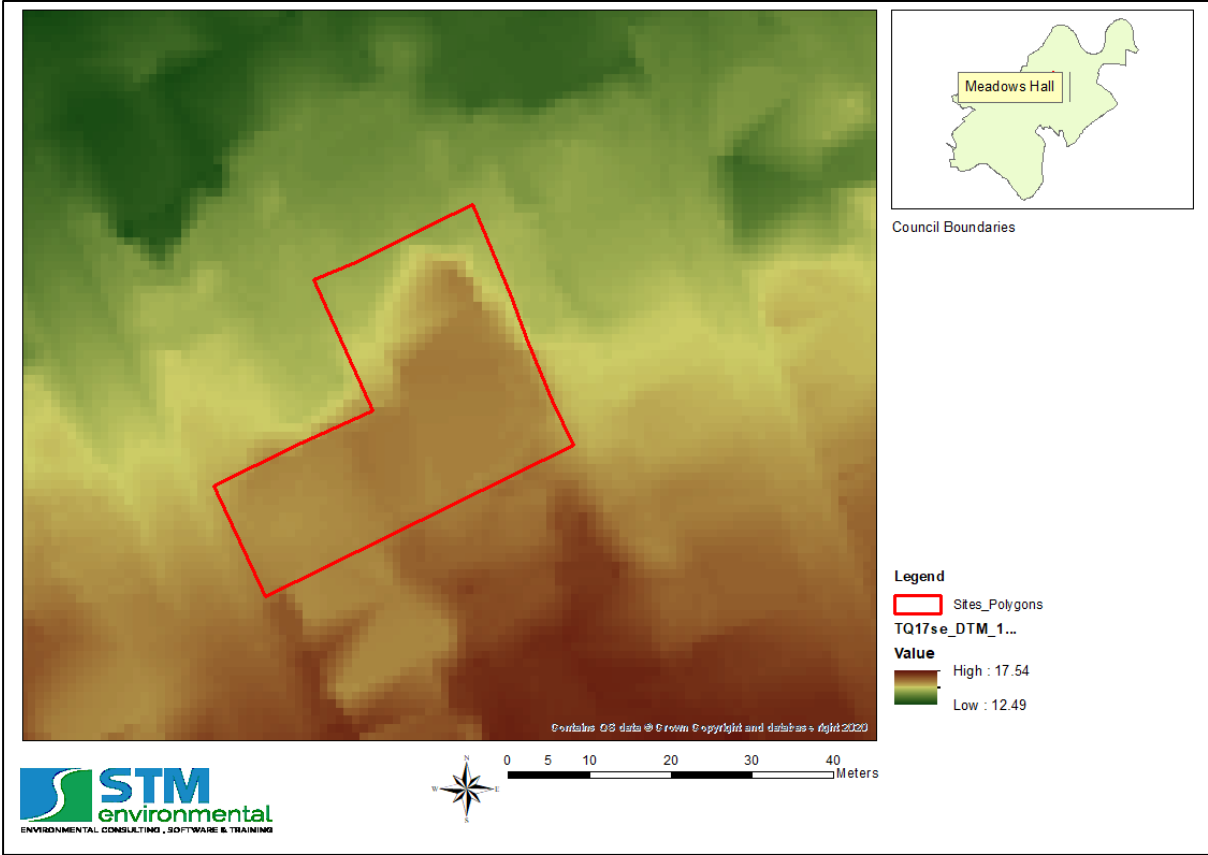
17.3.1 Superficial Hydrogeology Map

None

17.3.2 Bedrock Hydrogeology Map

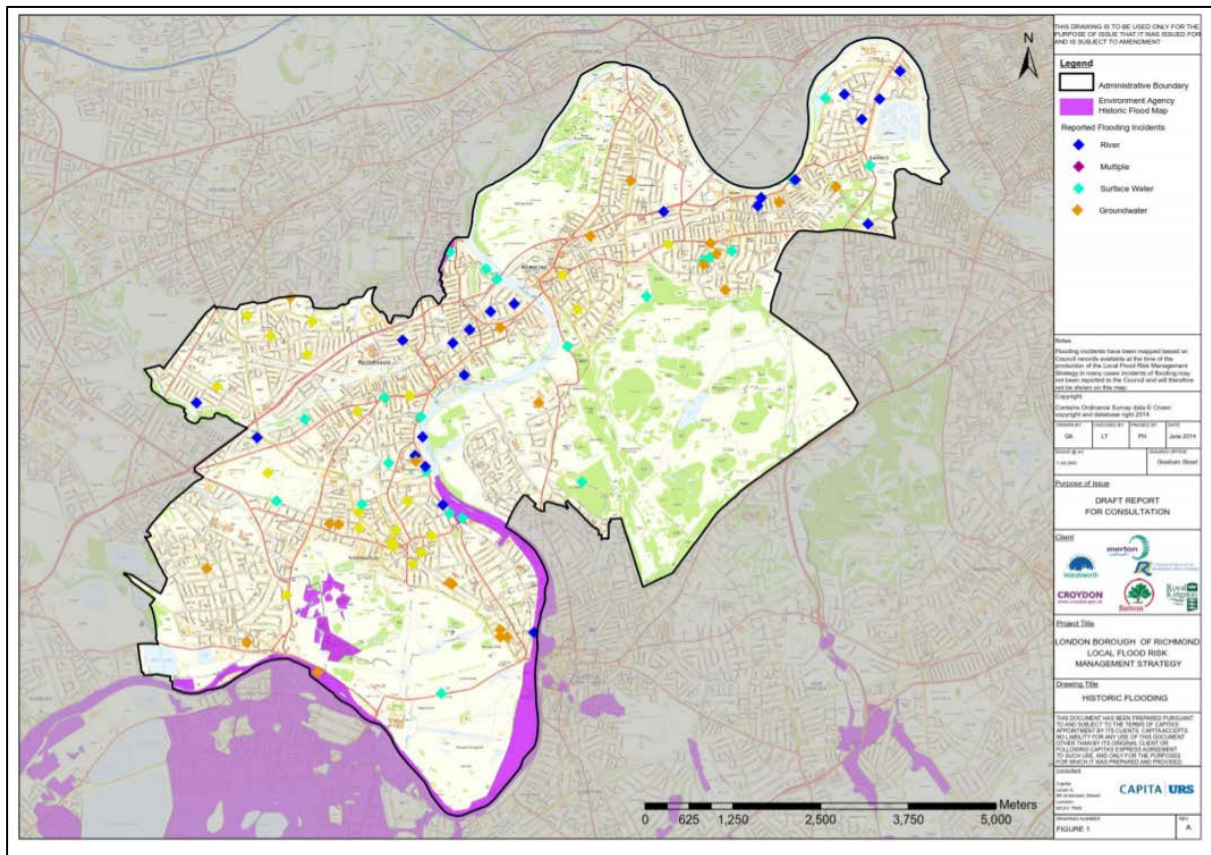


17.3.3 Topology Map

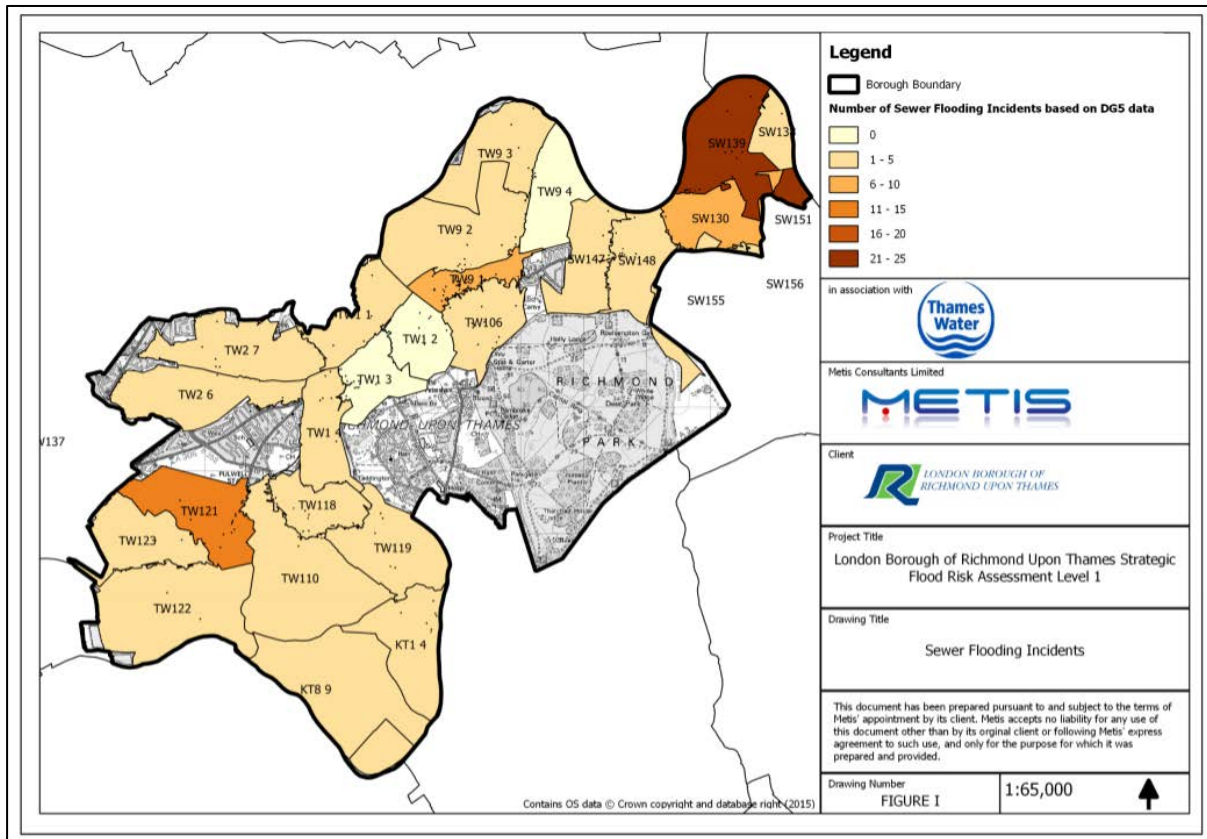


17.4 Appendix 4 – Historical Flood Incident Maps

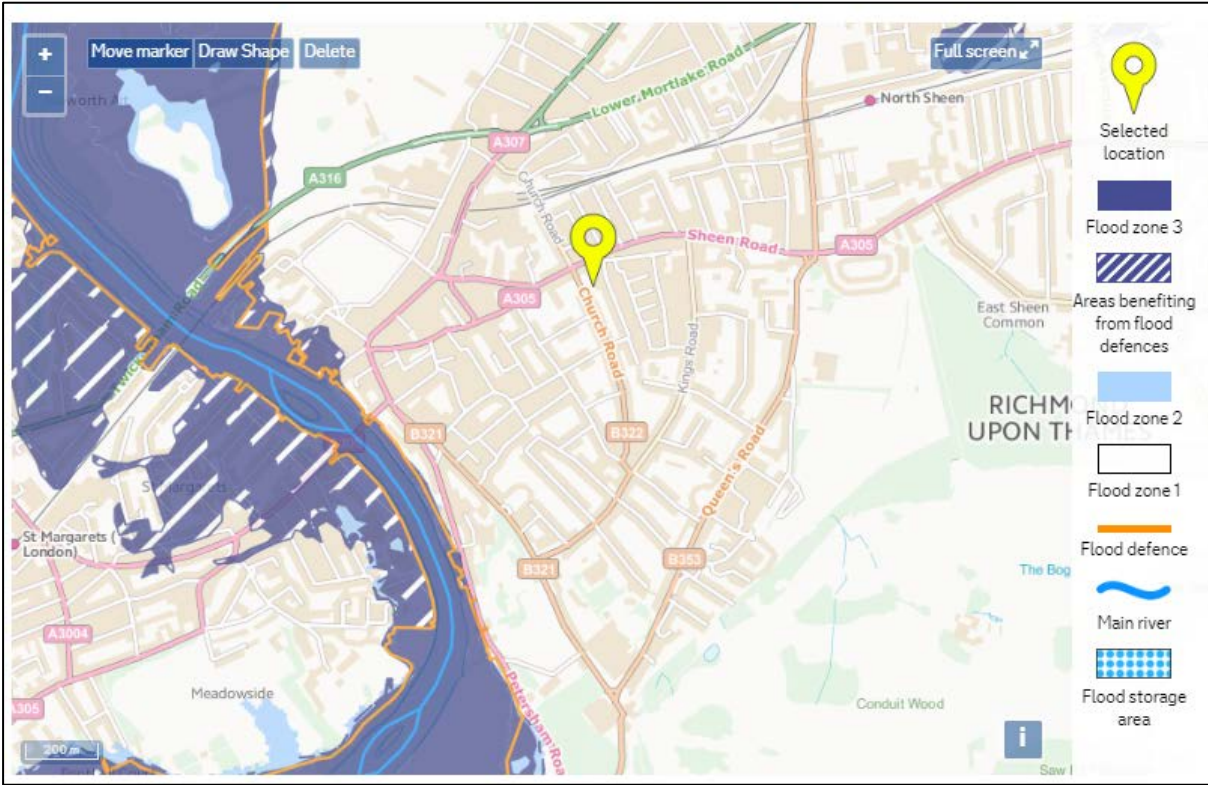
17.4.1 SFRA Historic flood incidents



17.4.2 Map Recorded Sewer Flooding

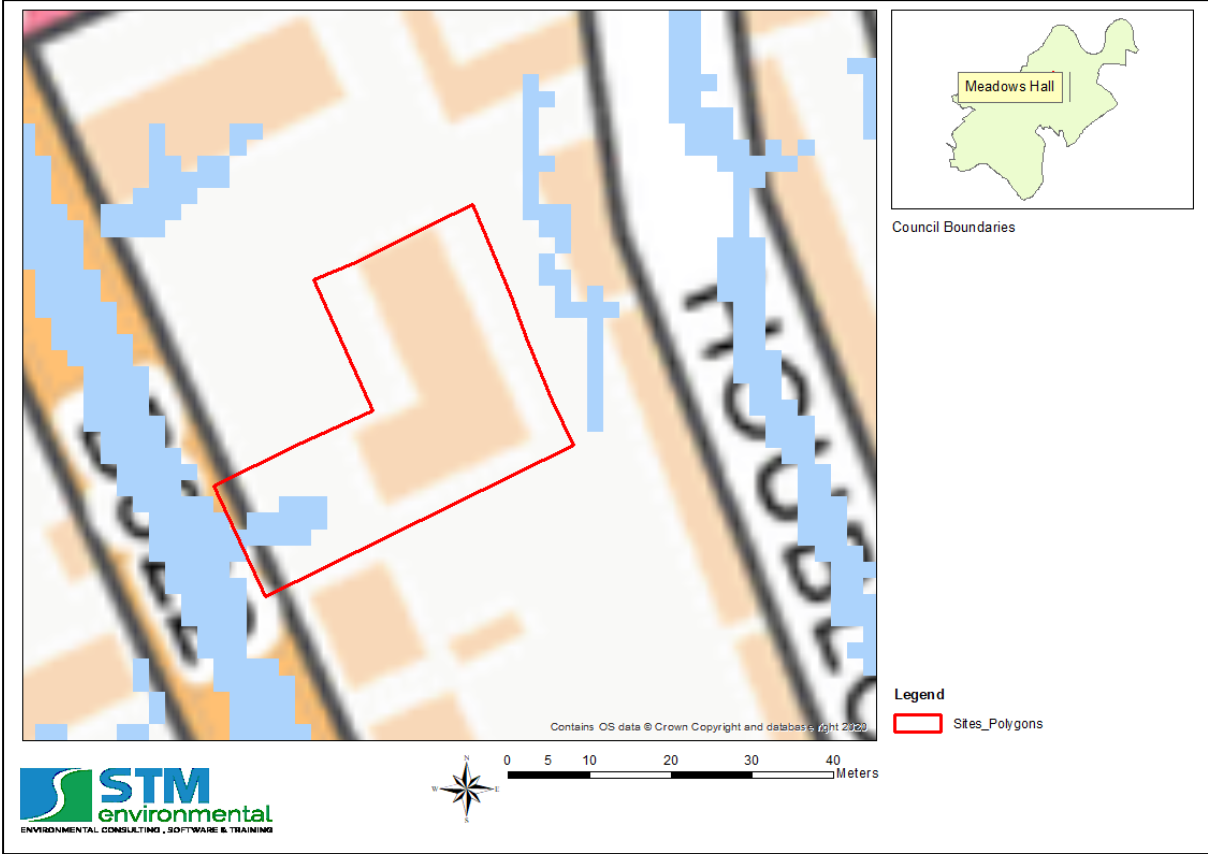


17.5 Appendix 5 - EA Flood Zone Map

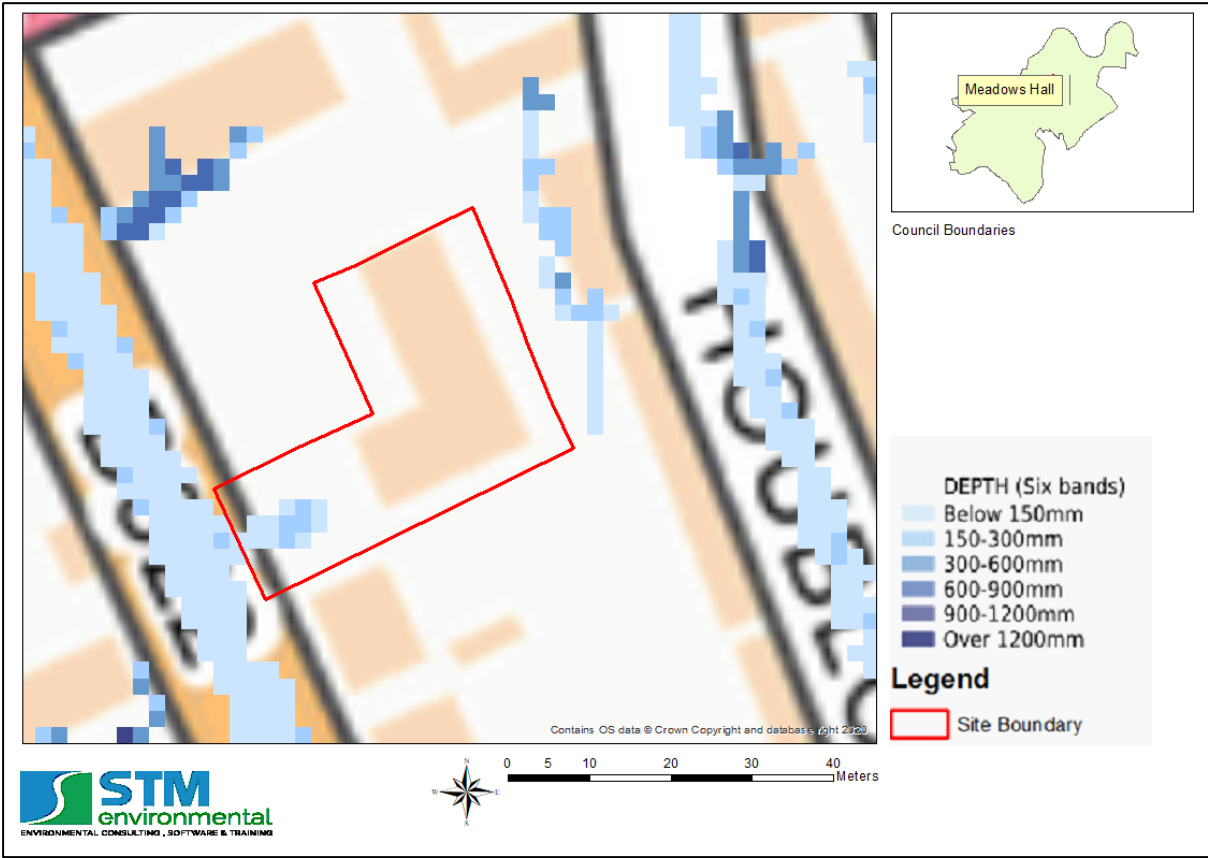


17.6 Appendix 6 – Surface Water Flood Extent and Depth Maps

17.6.1 Map showing surface water flood extent for the 1 in 1000-year rainfall return period (Source: EA, 2016).



17.6.2 Predicted surface water flood depth for the 1 in 1000-year return period
(Source: EA, 2016).



17.7 Appendix 7 –Flood Defence and Reservoir Flood Risk Maps

17.7.1 EA Map showing areas benefitting from flood defences

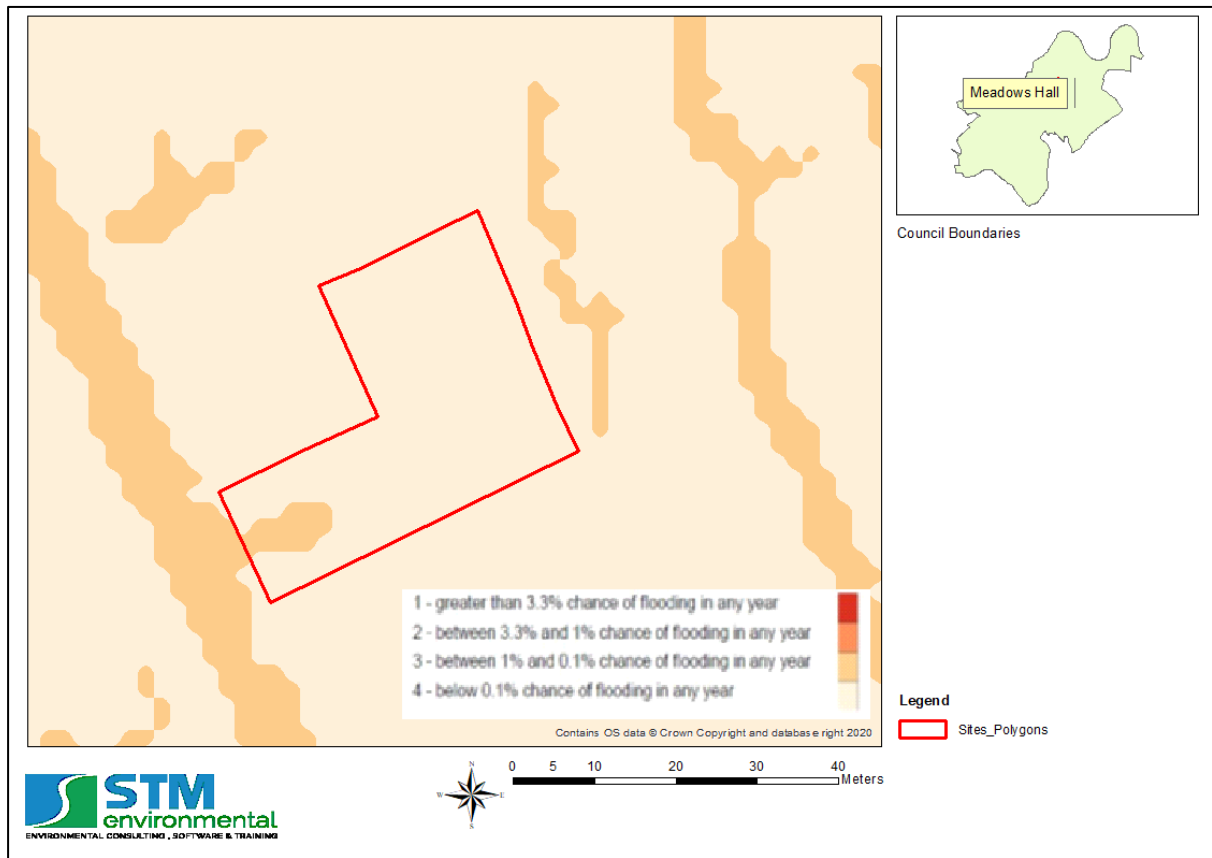
N.A.

17.7.2 Reservoir Flood Risk Map

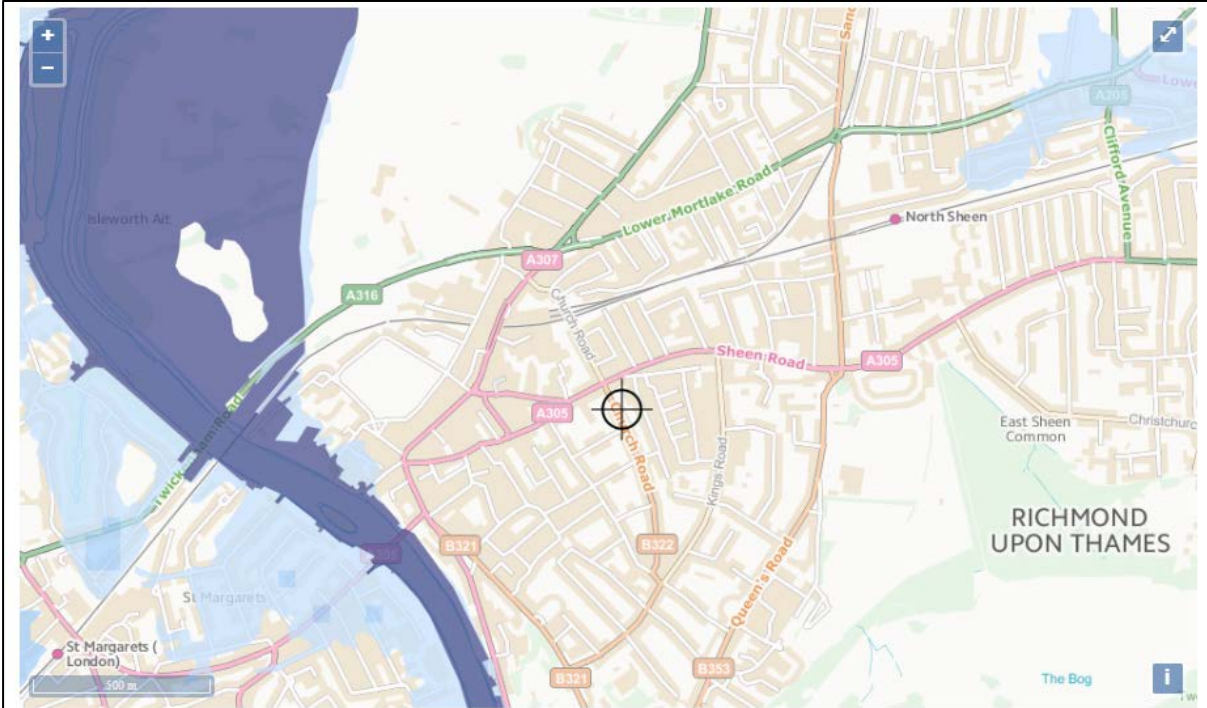
N.A.

17.8 Appendix 8 – Flood Risk Maps

17.8.1 Risk of Flooding from Multiple Sources Map



17.8.2 Long Term Flood Risk Maps



Extent of flooding from rivers or the sea

● High
 ● Medium
 ● Low
 ● Very low
 ⊕ Location you selected



Extent of flooding from surface water

● High
 ● Medium
 ● Low
 ○ Very low
 ⊕ Location you selected

17.9 Appendix 9 – Groundwater Flood Susceptibility Map

