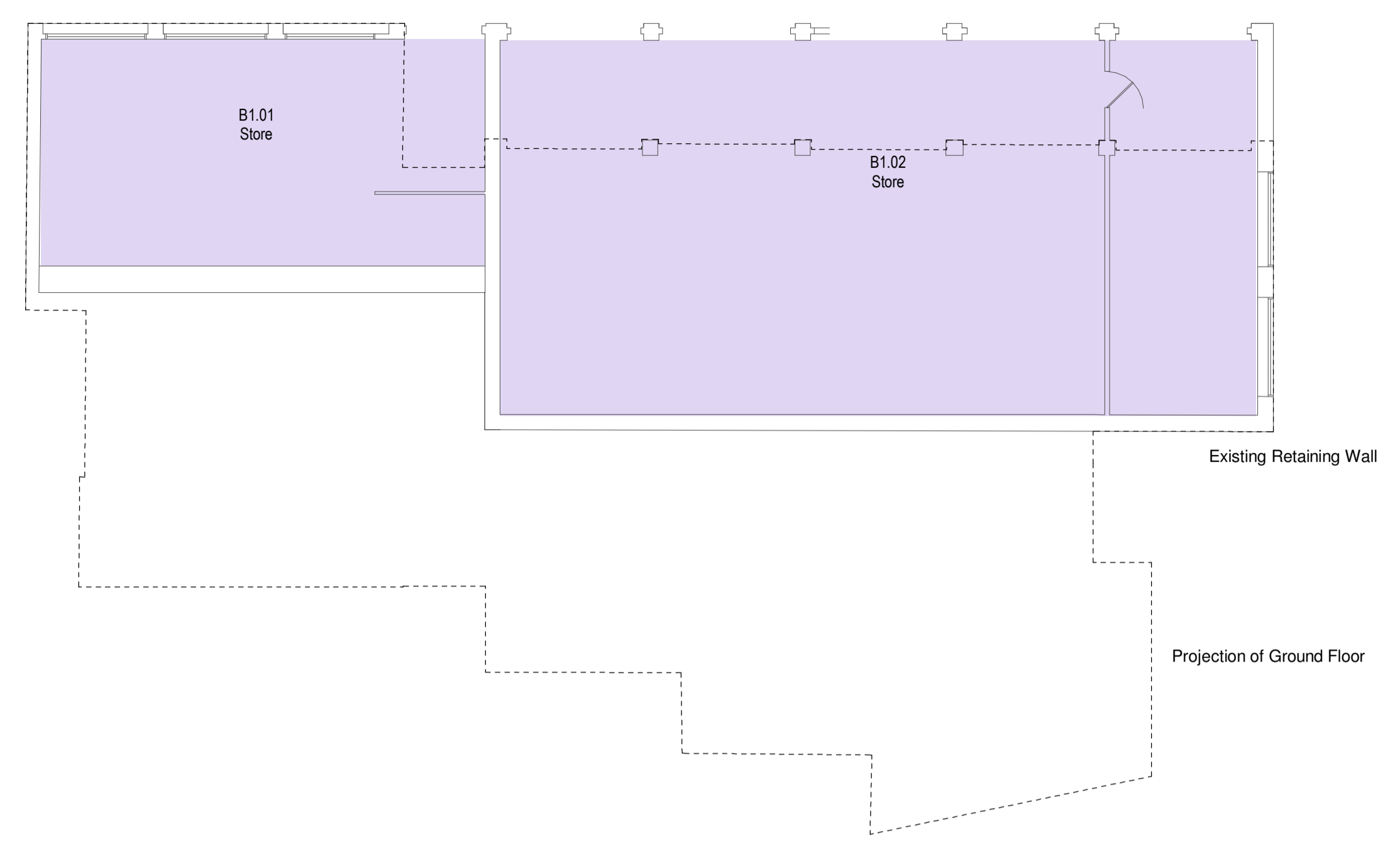


NO DIMENSIONS TO BE SCALED FROM THIS DRAWING
 CDM - RESIDUAL HAZARDS The following are considered to be significant risks relevant to this drawing, which could not be fully mitigated or removed through design:



E1 LG Existing Room Areas Schedule		
Room Number	Room Name	Area
Utilities		
B1.01	Store	44.54 m ²
B1.02	Store	170.34 m ²
Grand total: 2		170.34 m ²

E1 L0 Existing Room Areas Schedule		
Room Number	Room Name	Area
Circulation		
00.01	Circulation	38.28 m ²
Kitchen		
00.09	Kitchen	27.96 m ²
00.10	Kitchen	8.30 m ²
00.11	Kitchen Lobby	7.77 m ²
00.12	Kitchen Store	7.21 m ²
00.13	Kitchen Store	4.86 m ²
Learning		
00.16	Classroom	31.70 m ²
Main Hall		
00.06	Main Hall	86.50 m ²
Office / Meeting		
00.02	Office	12.47 m ²
00.03	General Office	26.50 m ²
Plant		
00.07	Plant	3.58 m ²
00.08	Plant	12.38 m ²
Sanitary		
00.14	WC	3.68 m ²
Utilities		
00.04	Store	5.00 m ²
00.05	Store	5.09 m ²
00.15	Wet Store	13.54 m ²
Grand total: 16		294.80 m ²

E1 L1 Existing Room Areas Schedule		
Room Number	Room Name	Area
Plant		
01.01	Plant	16.96 m ²
Grand total: 1		16.96 m ²

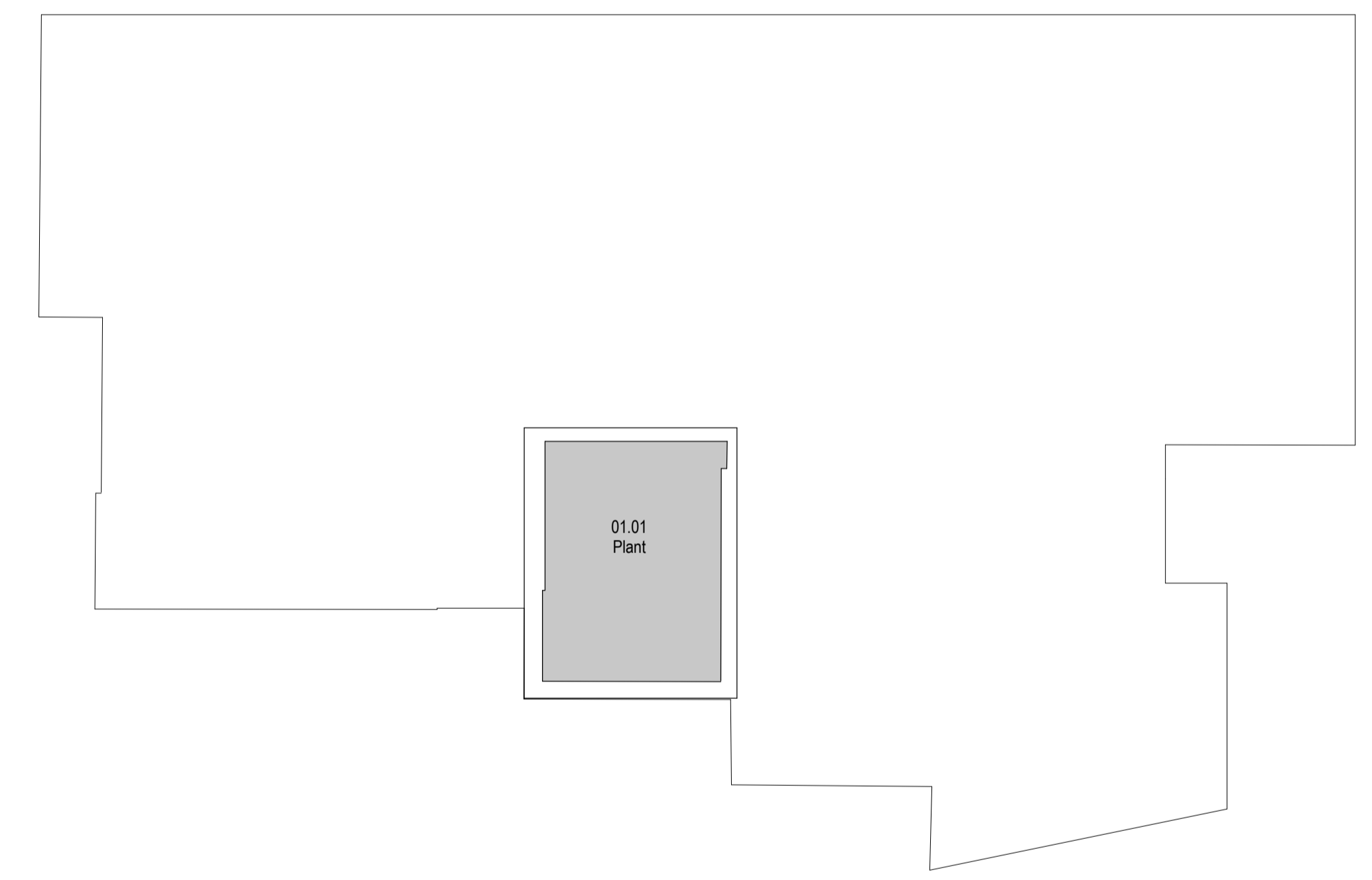
By Department Legend
 Utilities

E1 Existing Lower Ground Floor Plan
 1:100



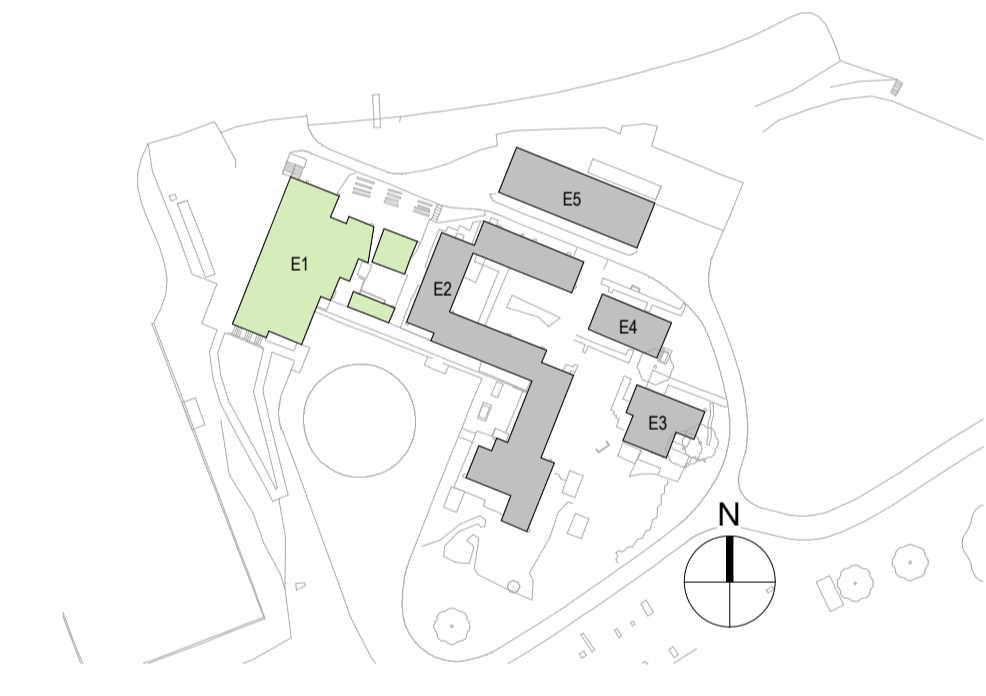
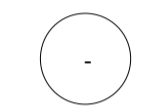
By Department Legend
 Ancillary Store/Services
 Circulation
 Exterior Circulation
 Kitchen
 Learning
 Main Hall
 Office / Meeting
 Plant
 Sanitary
 Utilities

E1 Existing Ground Floor Plan
 1:100

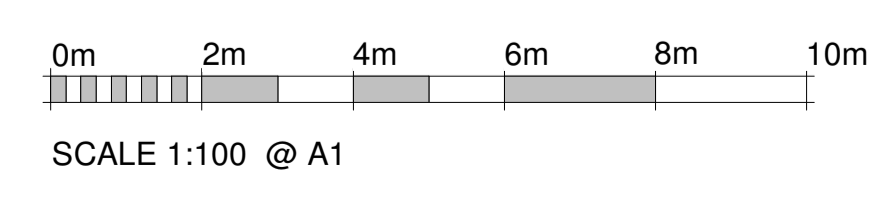


By Department Legend
 Plant

E1 Existing First Floor Plan
 1:100



Existing E1 Site Key Plan
 1:1250



Revision	Date	Drn	Chk
P01	03.10.22	AJ	CG

This document references the following files:-

Client
Surrey County Council

Project
**Surrey Outdoor Learning & Development Centre
 Thames Young Mariners**

Drawing Title
**E1 Plan and Schedule of Areas
 Existing Building**

Suitability Status
S2 - Suitable for Information

Job No.	Scale	Size	Rev
211263	As indicated	@ A1	P01

Drawing Number
PR-200 - PEV - XX - ZZ - DR - A - 11003

T 0345 045 0050 www.pick-everard.co.uk
 This drawing is issued for the sole and exclusive use of the intended recipient and is subject to copyright in favour of Pick Everard. Pick Everard does not accept any responsibility or liability whatsoever for its use by a person other than the intended recipient.