

Project No	Drawing No	Revision
03723	P(0)3	

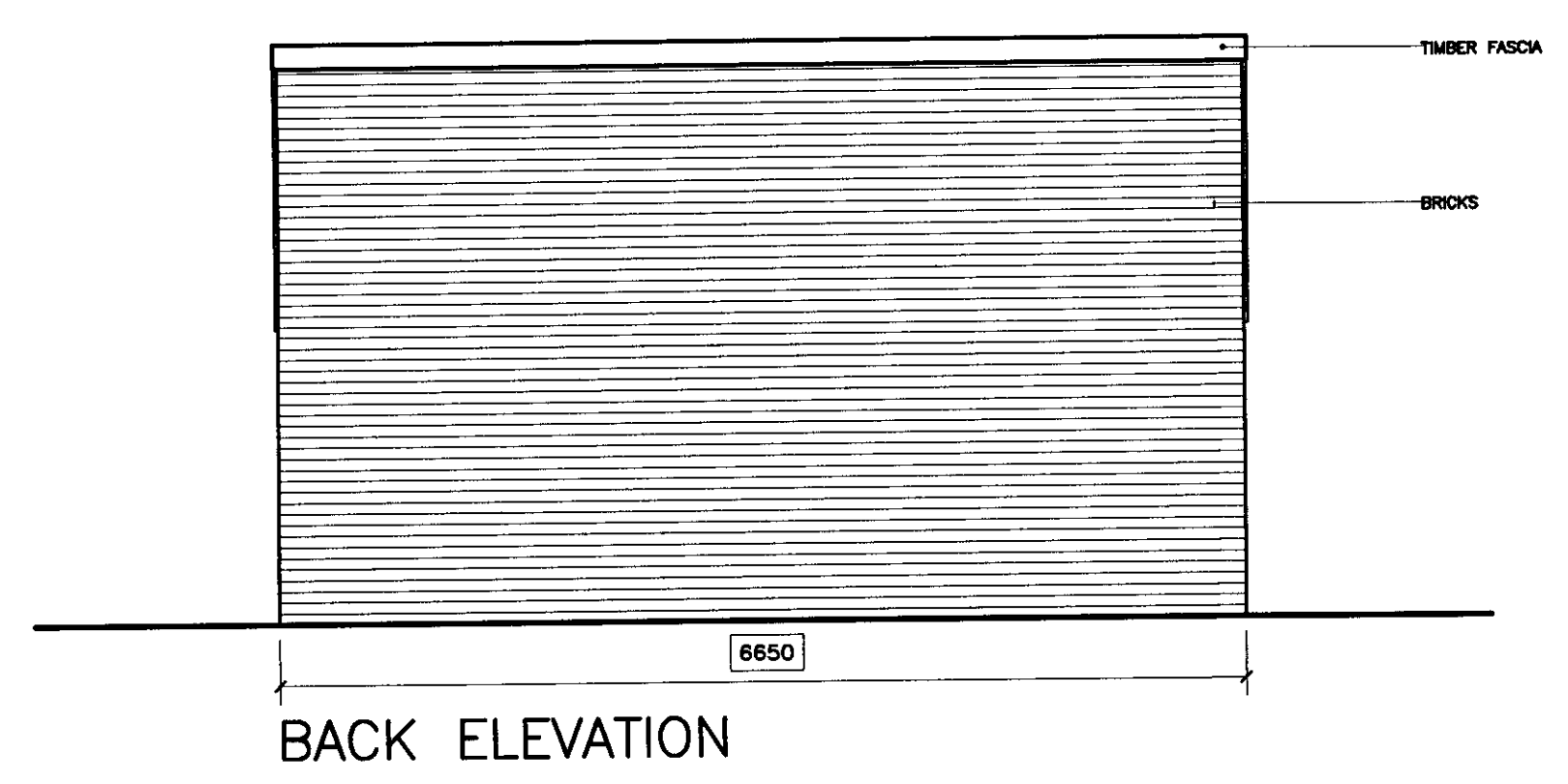
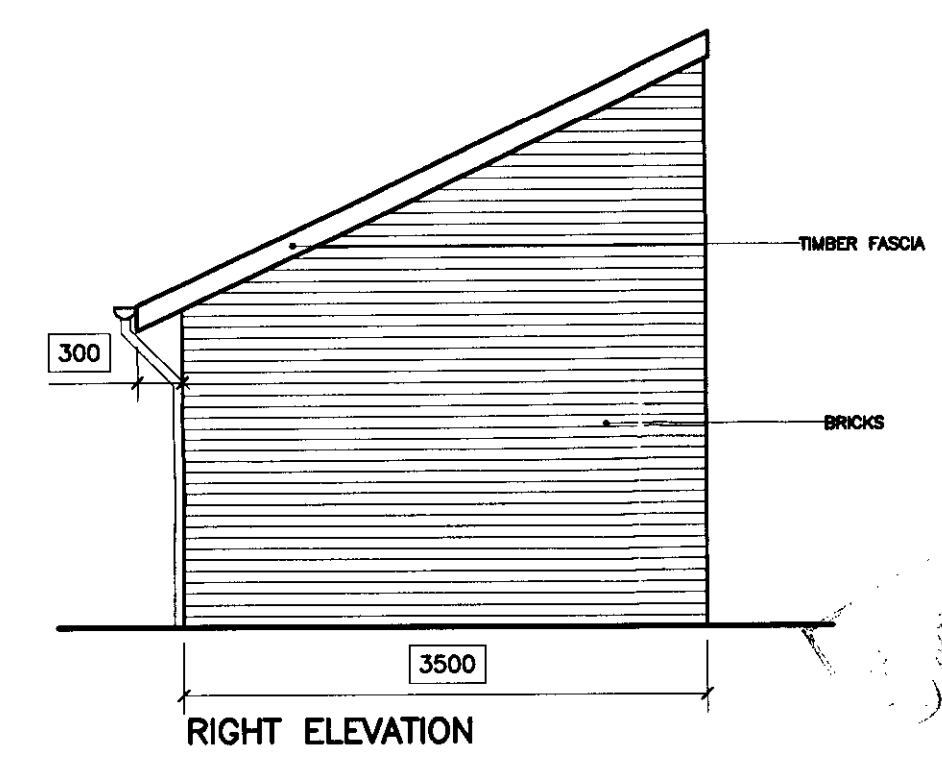
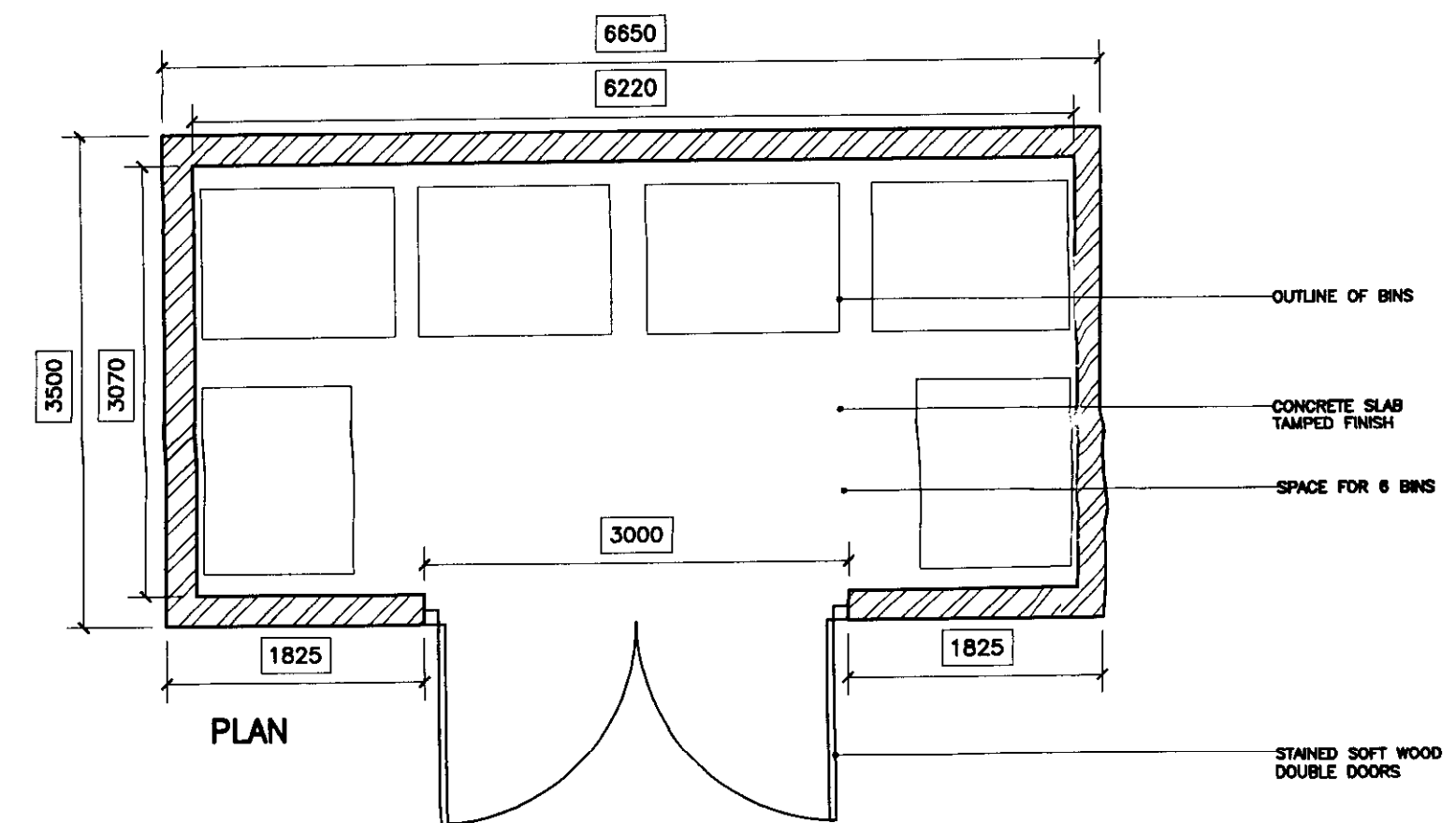
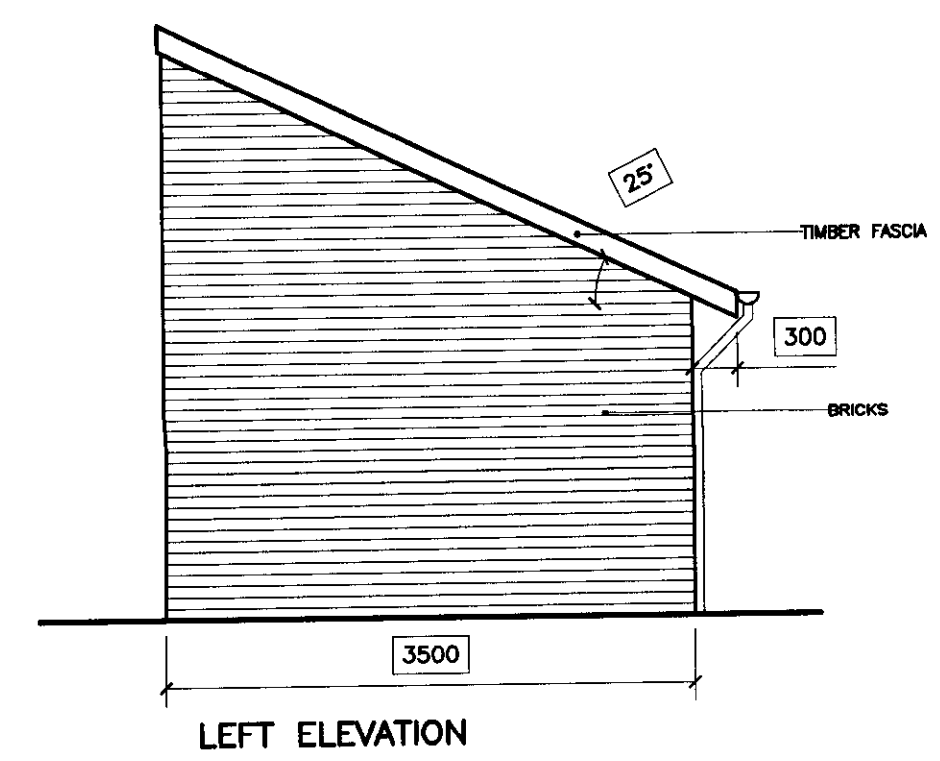
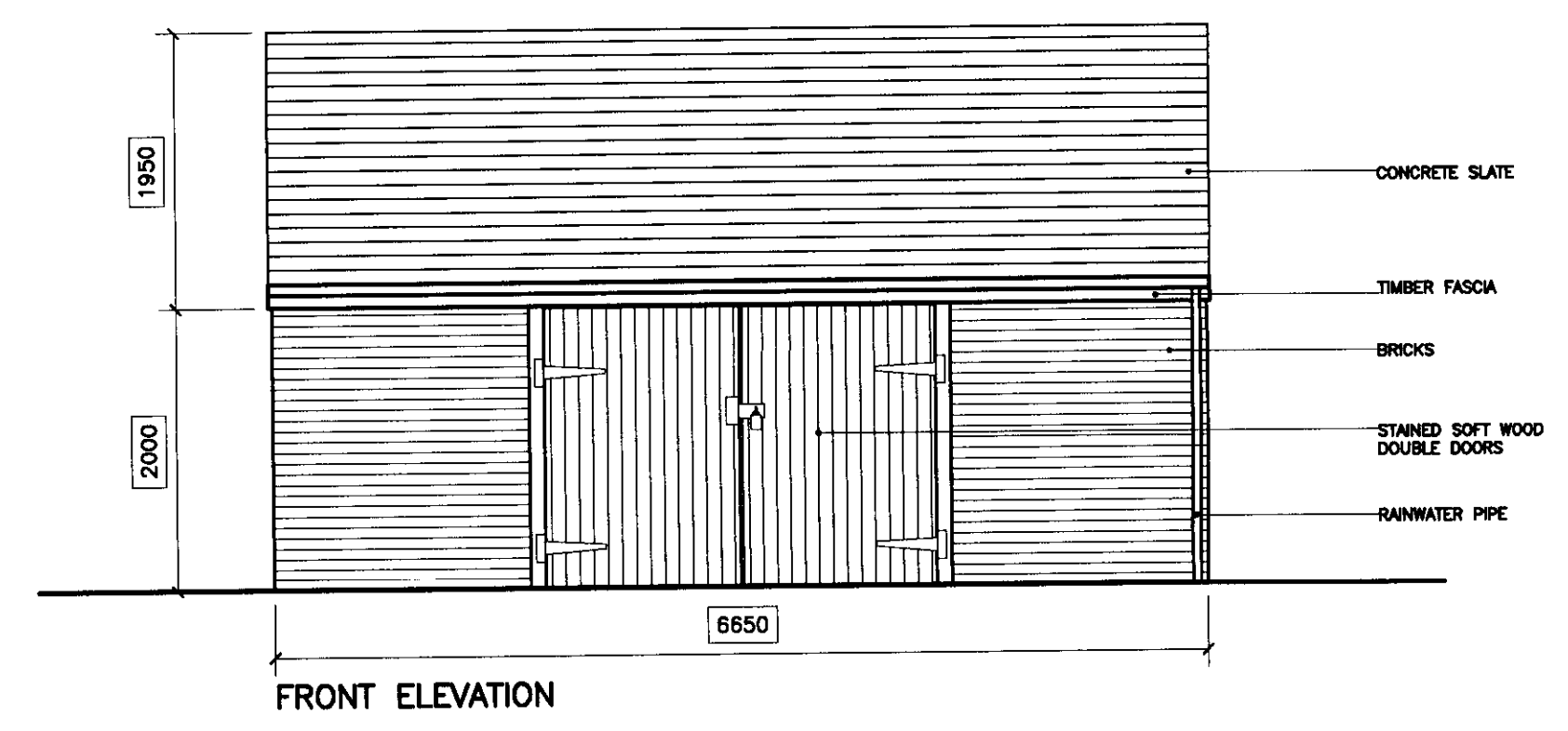
© ASH DESIGN CONSULTANTS LTD  
 Registered office: 185 Queen Victoria Street, London EC4V 4DD.  
 Company registered in England and Wales No. 4120850  
 No part of this drawing may be reproduced without written consent.  
 All contractors must visit site and be responsible for taking and checking all dimensions relating to the work.  
 Do not scale from this drawing.



Rev	Date	By	Amendment

LEGEND

04/0300/FUL



OFFICE COPY  
 DO NOT REMOVE FROM FILE

TRIBAL  
 02 FEB  
 PLANNING  
 A member of Tribal Group PLC

**ASH DESIGN**

■ LONDON  
 RIVERSIDE OFFICES, BLOCK A, LITTLEBROOK BUSINESS PARK,  
 DARTFORD, KENT DA11 8PZ  
 Tel: 01432 822000 E-mail: adcl@tribalps.co.uk  
 Fax: 01432 820158 Website: www.TribalPS.co.uk

BRISTOL  
 1 PORTLAND SQUARE,  
 BRISTOL, BS2 8HR  
 Tel: 0117 311 5420  
 Fax: 0117 311 5422

LEEDS  
 SUITE 4, GRIMSTON ORANGE OFFICES,  
 SHERBURN ROAD, TADCASTER, LS24 9BX  
 Tel: 01937 833675  
 Fax: 01937 833612

Client	St MARY'S COLLEGE TWICKENHAM		
Project	MAIN BIN STORE RE-LOCATION		
Drawing	BIN STORE		
Date	29/01/04	Scale	1:50
Drawn by	AO	Checked by	

Project No	Drawing No	Revision
03723	P(0)3	