

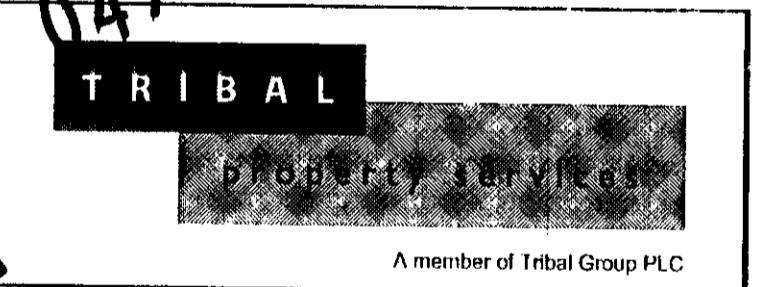
Project No	Drawing No	Revision
03723	P(0)3	

© ASH DESIGN CONSULTANTS LTD
 Registered office: 165 Queen Victoria Street, London, EC4V 4DD
 Company registered in England and Wales No. 4128650
 No part of this drawing may be reproduced without written consent.
 All conditions must still apply and be responsible for using and
 checking all dimensions relating to this work.
 Do not scale from this drawing.



Rev	Date	By	Amendment

LEGEND



ASH DESIGN
 CHARTERED ARCHITECTS

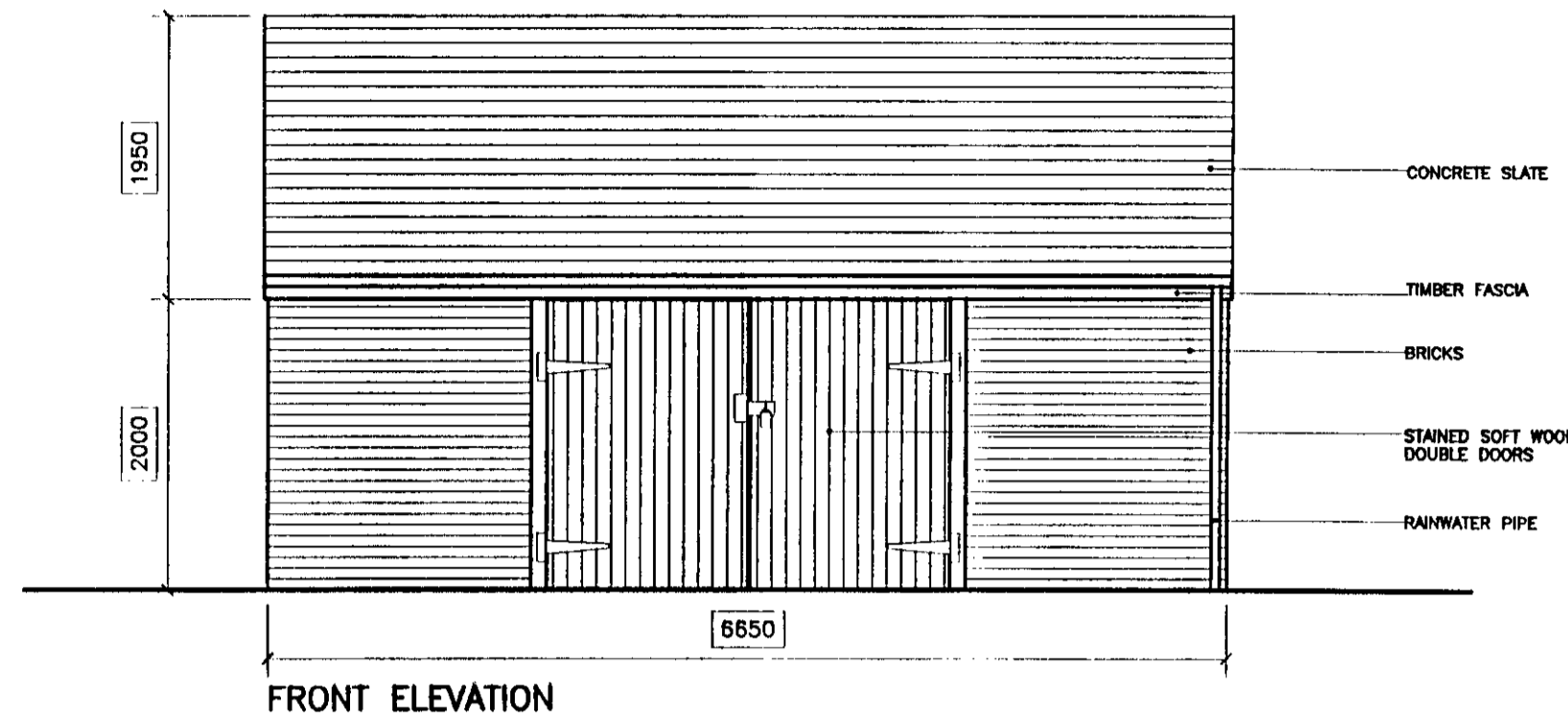
■ LONDON
 RIVERSIDE OFFICES, BLOCK A, LITTLEBROOK BUSINESS PARK,
 DARTFORD, KENT DA11 5BZ
 Tel: 01322 627800 E-mail: ardc@tribalps.co.uk
 Fax: 01322 290155 Website: www.tribalps.co.uk

BRISTOL
 1 PORTLAND SQUARE,
 BRISTOL BS2 8BR
 Tel: 0117 311 5420
 Fax: 0117 311 5422

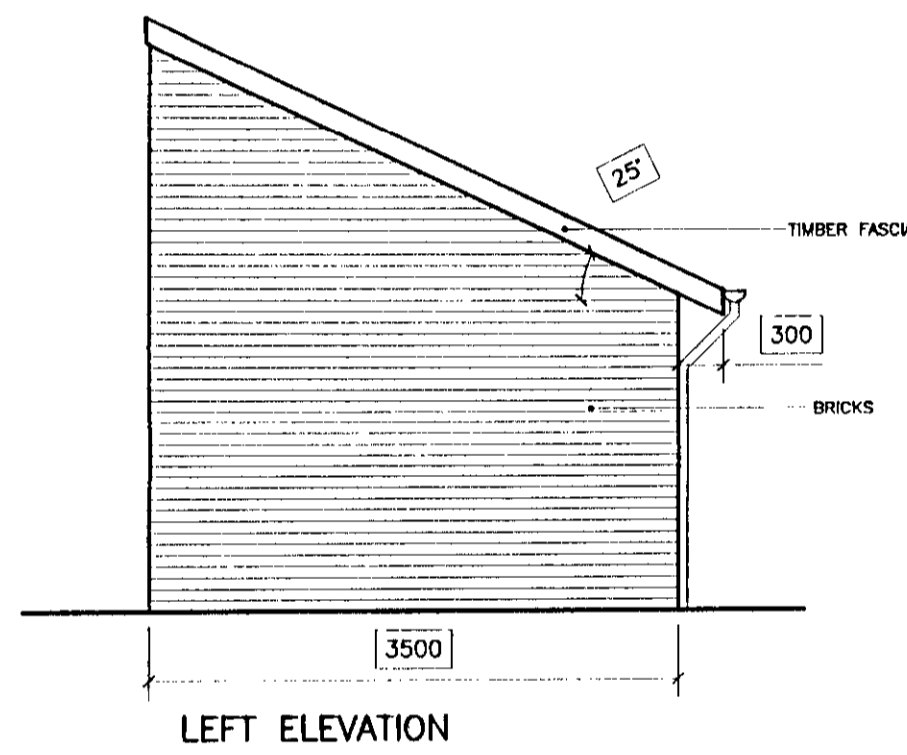
LEES
 SUITE 1, GRIMSTON GRANGE OFFICES,
 SHERRURM ROAD, TADCASTER, LS24 9HX
 Tel: 01937 838075
 Fax: 01937 838072

Client	St MARY'S COLLEGE TWICKENHAM		
Project	MAIN BIN STORE RE-LOCATION		
Drawing	BIN STORE		
Date	Scale	Drawn by	AO
29/01/04	1:50	Checked by	

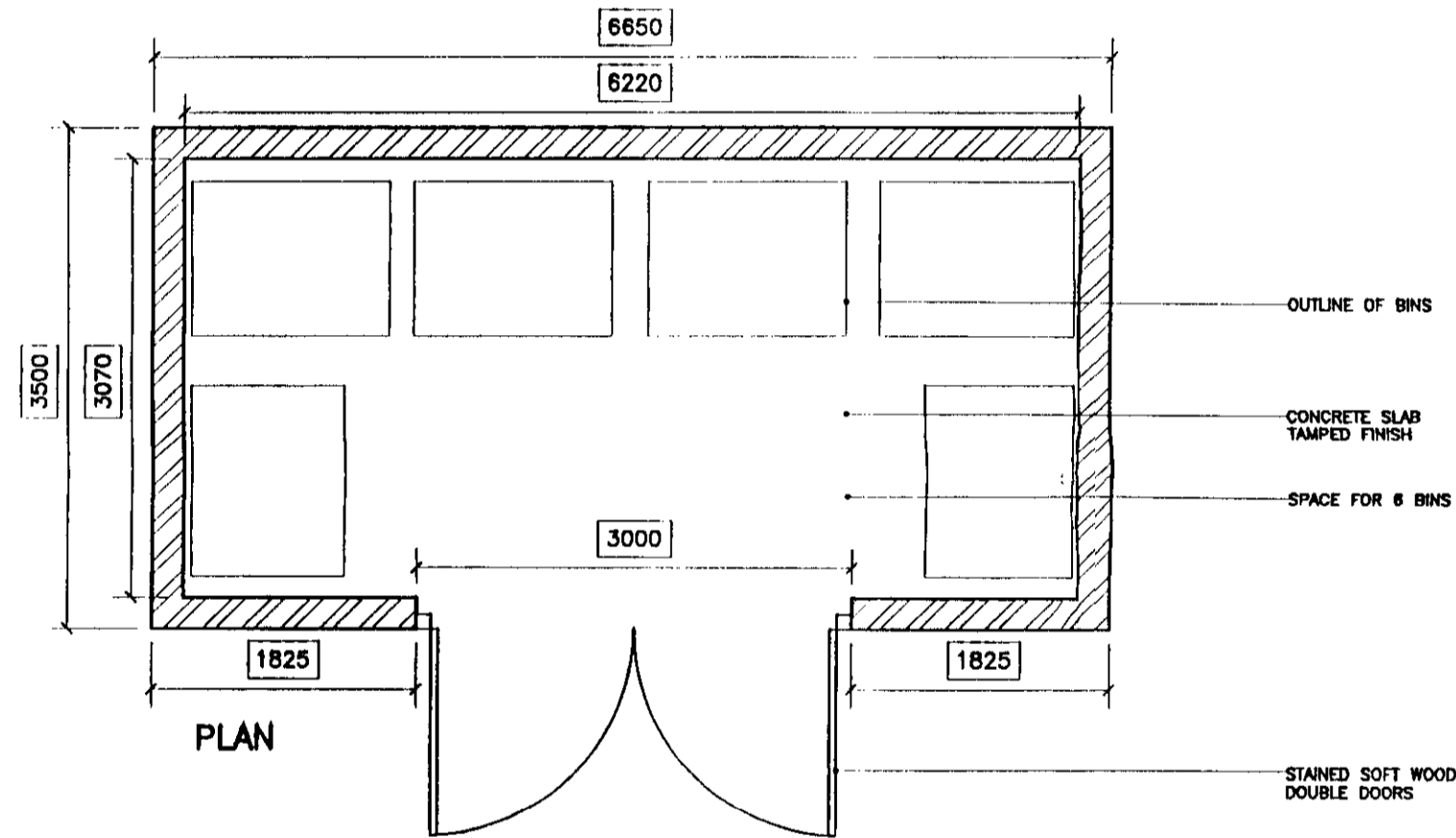
Project No	Drawing No	Revision
03723	P(0)3	



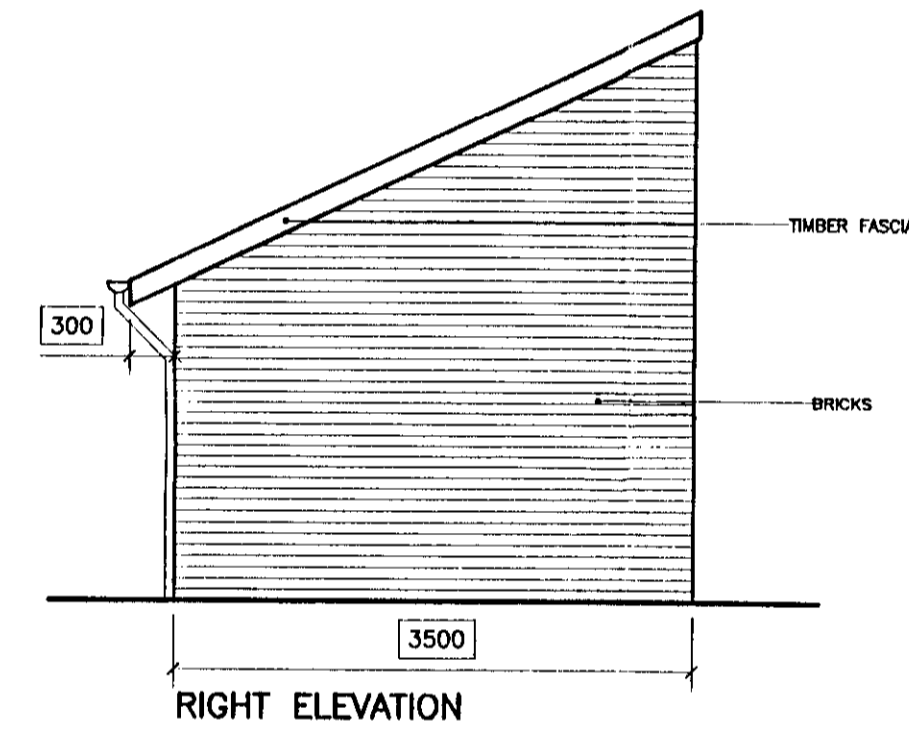
FRONT ELEVATION



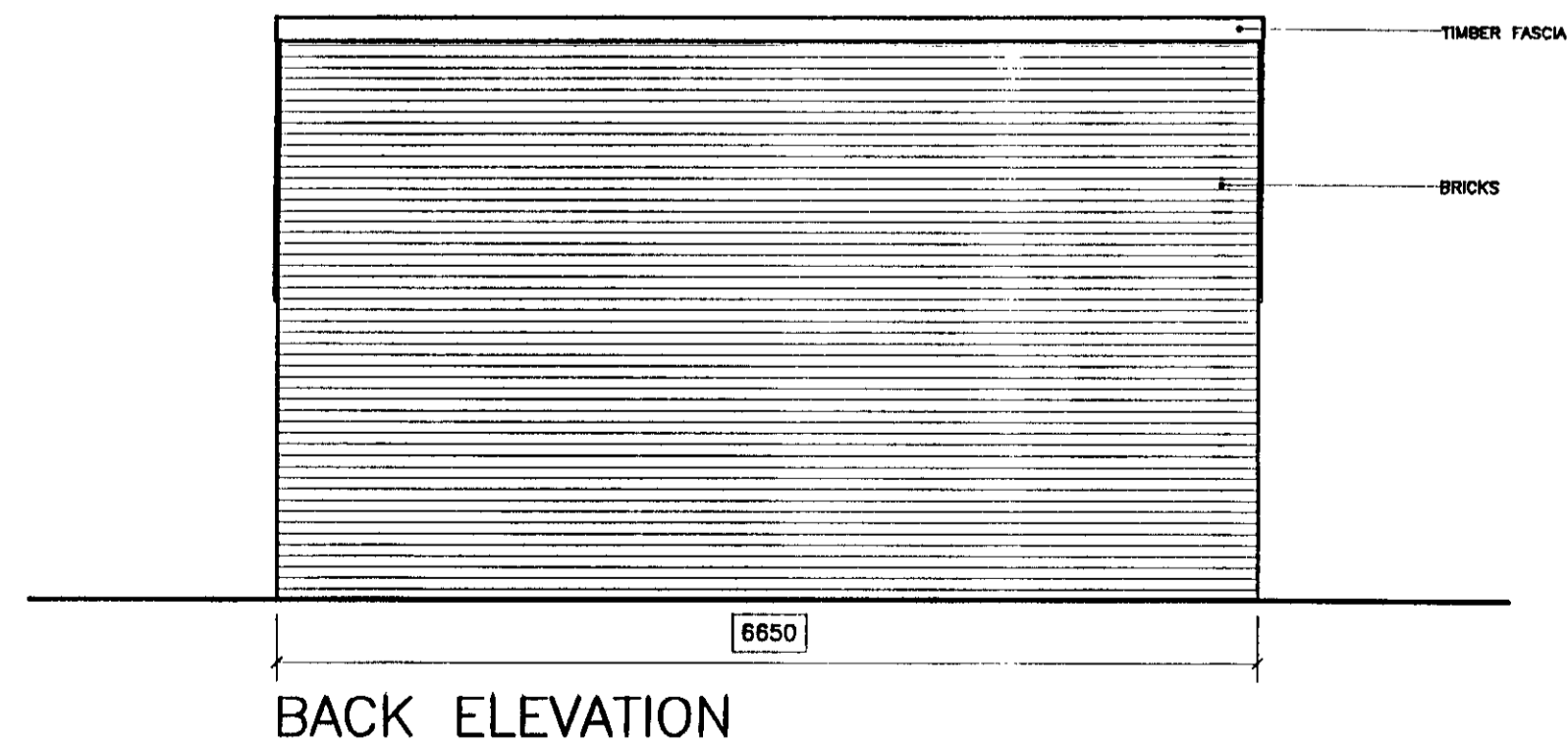
LEFT ELEVATION



PLAN



RIGHT ELEVATION



BACK ELEVATION

LONDON REPRODUCTION OF
 RICHMOND JORDAN PAPERS
 02 FEB 2004
 PLANNING

04/0300/FUL