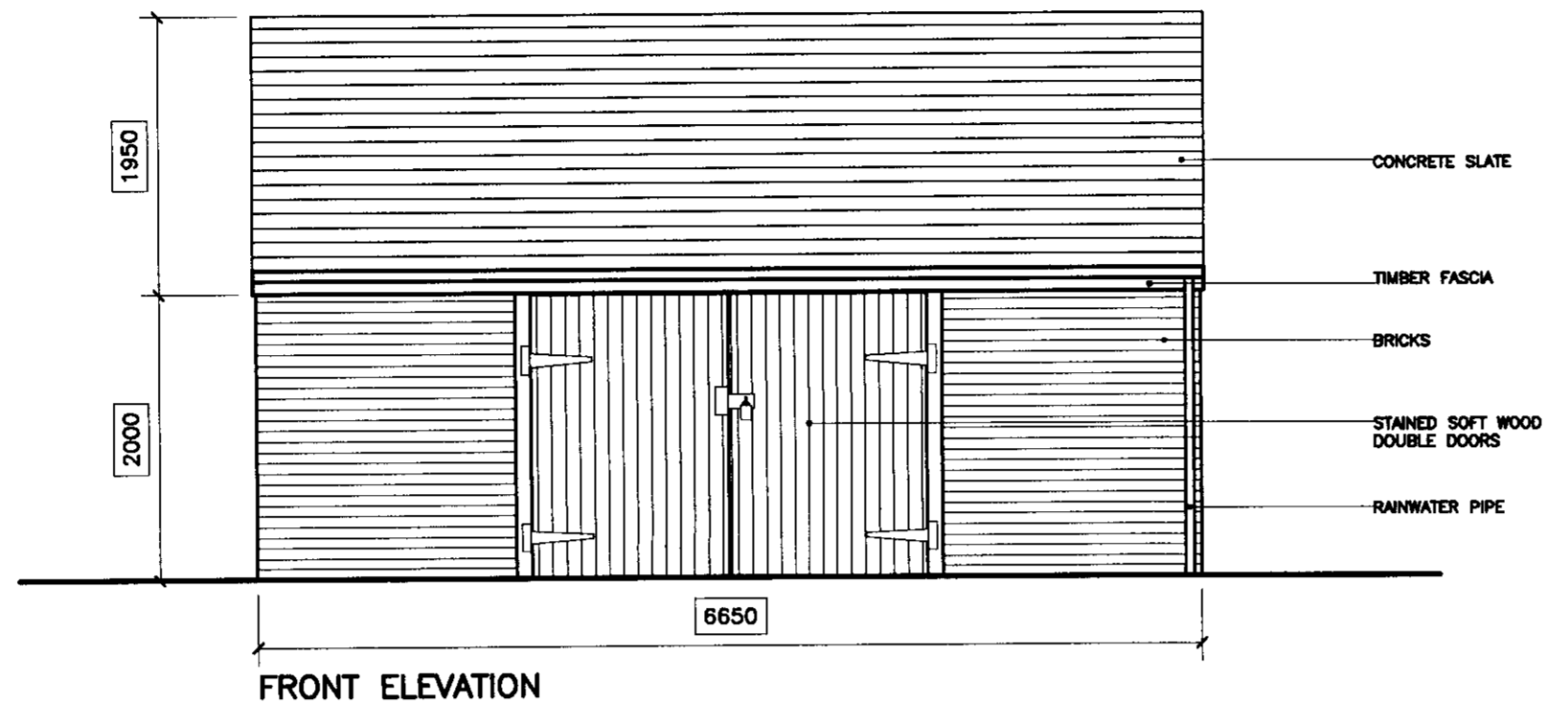


Project No	Drawing No	Revision
03723	P(0)3	

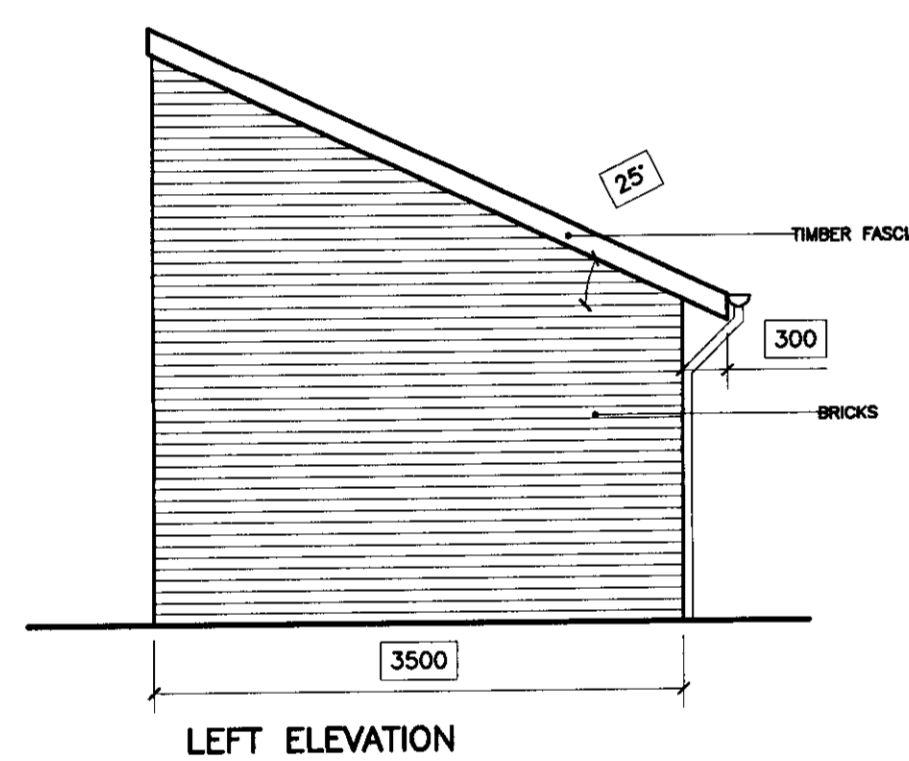
© ASH DESIGN CONSULTANTS LTD  
 Registered office: 161 Queen Victoria Street, London, EC4V 4DQ.  
 Company registered in England and Wales No. 4128850  
 No part of this drawing may be reproduced without written consent.  
 All contractors must visit site and be responsible for taking and  
 checking all dimensions relating to this work.  
 Do not scale from this drawing.



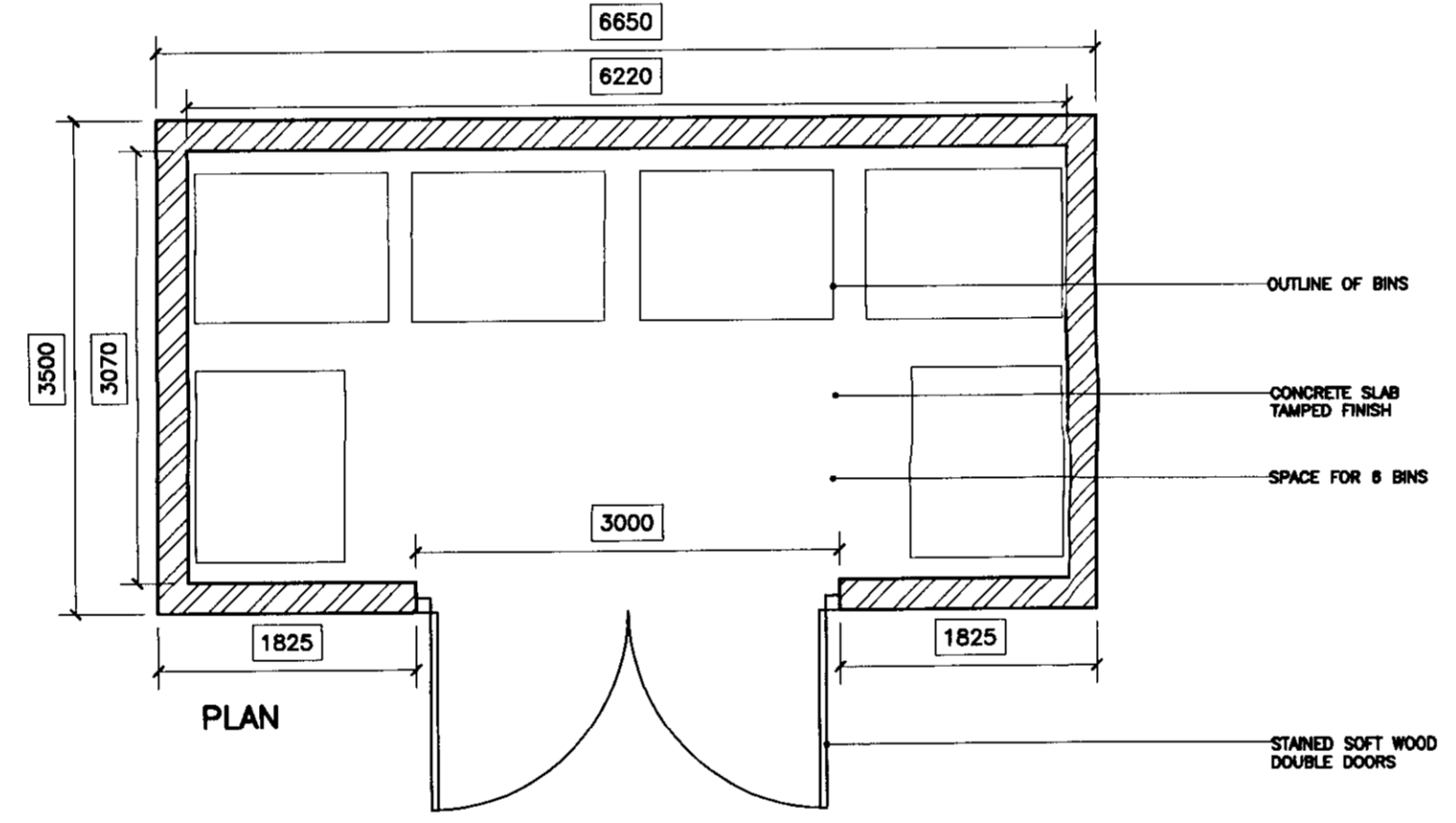
Rev	Date	By	Amendment



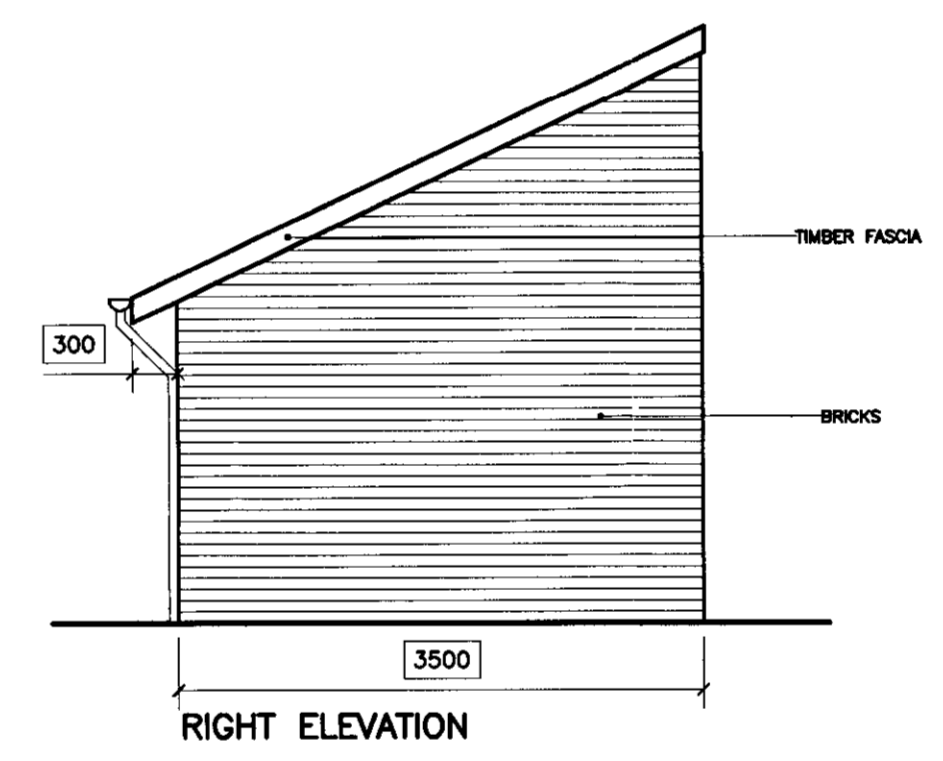
FRONT ELEVATION



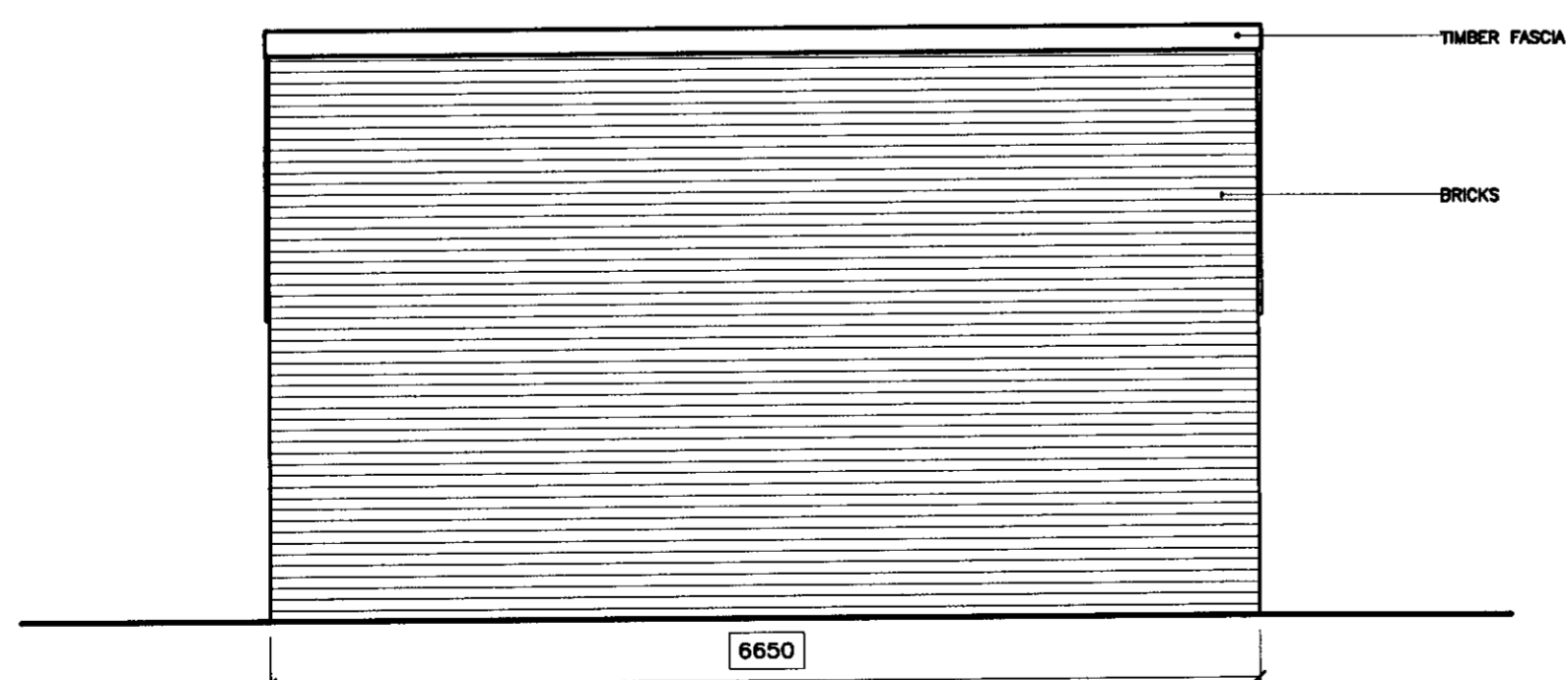
LEFT ELEVATION



PLAN



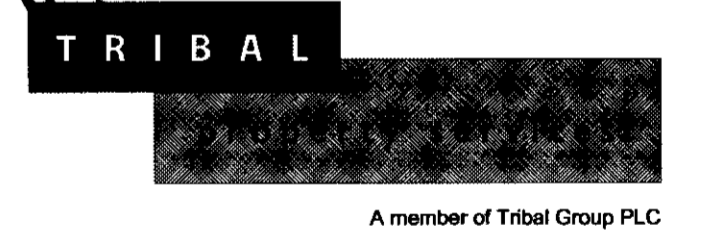
RIGHT ELEVATION



BACK ELEVATION

LEGEND

04/0300/FUL'



LONDON BOROUGH OF  
 RICHMOND UPON THAMES  
 02 FEB 2004  
 PLANNING

**ASH DESIGN**

■ LONDON  
 RIVERSIDE OFFICES, BLOCK A, LITTLEBROOK BUSINESS PARK,  
 DARTFORD, KENT DA1 5PZ  
 Tel: 01322 627800 E-mail: add@TribalPS.co.uk  
 Fax: 01322 280155 Website: www.TribalPS.co.uk

BRISTOL  
 1 PORTLAND SQUARE,  
 BRISTOL BS2 8RR  
 Tel: 0117 311 5420  
 Fax: 0117 311 6422

LEEDS  
 SUITE 1, GRIMSTON GRANGE OFFICES,  
 SHERBURN ROAD, TADCASTER, LS24 9BX  
 Tel: 01937 838975  
 Fax: 01937 838912

Client	St MARY'S COLLEGE TWICKENHAM		
Project	MAIN BIN STORE RE-LOCATION		
Drawing	BIN STORE		
Date	Scale	Drawn by	AO
29/01/04	1:50	Checked by	

Project No	Drawing No	Revision
03723	P(0)3	