

**Planting Schedule**

Trees	Number	Species	Specification	Density
3	Betula pendula 'Fastigiata'	Standard: 3 brks: 2x: RB: Clear Stem 175-200cm	Counted	
1	Liquidambar orientalis	Heavy Standard: 5 brks: 3x: RB: Clear Stem min. 200cm	Counted	
2	Prunus sargentii 'Rancho'	Standard: 3 brks: 2x: RB: Clear Stem 175-200cm	Counted	

Native Hedge	Number	Species	Specification	Density	Percentage Contribution
54	Corulus avellana	Branched: 3 brks: C	0.25Ctr Double Staggered at 0.3m offset	20%	
54	Crataegus monogyna	1+1: Transplant - seed raised: Branched: 4 brks: C	0.25Ctr Double Staggered at 0.3m offset	20%	
54	Euonymus europaeus	1+2: Transplant - seed raised: Branched: 5 brks: B	0.25Ctr Double Staggered at 0.3m offset	20%	
54	Ilex aquifolium	Leader with Laterals: C	0.25Ctr Double Staggered at 0.3m offset	20%	
54	Prunus spinosa	1+1: Transplant - seed raised: Branched: 2 brks: B	0.25Ctr Double Staggered at 0.3m offset	20%	
<b>Total :270</b>					

Native Shrub Mix	Number	Species	Specification	Density	Percentage Contribution
55	Cornus sanguinea	1+1: Transplant - seed raised: Branched: 2 brks: B	3/m <sup>2</sup>	25%	
55	Corulus avellana	1+1: Transplant - seed raised: Branched: 2 brks: B	3/m <sup>2</sup>	20%	
55	Ilex aquifolium	Bushy: 3 brks: C	3/m <sup>2</sup>	20%	
37	Rosa canina	Branched: 5 brks: C	2/m <sup>2</sup>	20%	
37	Viburnum opulus	Branched: 4 brks: C	2/m <sup>2</sup>	20%	
<b>Total :239</b>					

Shrub Mix	Number	Species	Specification	Density	Percentage Contribution
43	Cornus sanguinea	1+1: Transplant - seed raised: Branched: 2 brks: B	3/m <sup>2</sup>	25%	
43	Corulus avellana	1+1: Transplant - seed raised: Branched: 2 brks: B	3/m <sup>2</sup>	25%	
34	Echinacea purpurea	Full Pot: C	5/m <sup>2</sup>	12%	
44	Ilex aquifolium	Leader with Laterals: C	5/m <sup>2</sup>	26%	
28	Skimmia x confusa 'Kew Green'	Bushy: 3 brks: C	4/m <sup>2</sup>	12%	
<b>Total :192</b>					

**SPECIFICATION NOTES**

- GENERAL**
- Proposals to be read in conjunction with Architects and Engineers Drawings;
  - All landscape operations to be in accordance with all relevant and current British Standard Codes;
  - All stock (other than container grown) shall be planted between November 30th and 28th February. Planting operations shall be carried out in suitable open weather and all plants re-firmed if lifted by frost during the contract. No planting shall take place in dry, hot and sunny weather or indeed of frost and snow are present, or in cold east winds, regardless of the stock specified
  - Any plant material planted outside the recognised planting season (Nov-Feb), to be containerised stock and supplied at the sizes specified;

**SOIL AND MULCH**

- Where the landscape subcontractor is obliged to handle topsoil or scrape and remove topsoil (e.g. for any hard works constructed within public open spaces) store such topsoil on site, in an area agreed with the Employer, storing in heaps no greater than 2 metres high. Cover with sacking, or geotextile sheeting until used, to prevent excessive weed growth and drying. Any weed growth shall be removed before utilising the topsoil for fill through the application of suitable herbicides;
- Beds found to have inadequately broken up sub-grades, are prone to water-logging in wet periods, causing plants to die. Such beds should be reported immediately to the Site Manager, Surveyor, Design Manager and the Landscape Architect. Landscape Subcontractor's should allow for breaking up excavated bottoms, or piercing with an auger at 500mm centres, to ensure they are free draining; wherever there is any evidence of residual compaction or poor drainage;
- Imported topsoil shall be in accordance with BS3882:2015, General purpose topsoil and free from subsoil, clay and debris. Where a landscape subcontractor has concerns about the quality of on-site topsoil supplied by others, a representative sample should be sent to the Landscape Architect for comment;

- Topsoil shall be evenly and thoroughly cultivated to depths as follows incorporating any specified ameliorates to full depths of cultivation;
- Trees - see the tree pit details for information;
- Shrub Planting - 400mm deep;
- Turfed Areas - 150mm deep;
- All planting areas to be covered with a 75mm depth of medium grade bark mulch.

**PLANT MATERIAL TREATMENT**

- All trees and shrubs are to be supplied from nurseries in the UK or other member countries of the EEC. The Landscape Architect is to approve the nursery selected by the Landscape Subcontractor for the supply of plants. The landscape subcontractor is responsible for the protection of plant material being hardened off or grown at their nursery and shall make good defects;

**EXISTING TREES AND SHRUBS**

- Existing trees to be retained shall be protected in accordance with the requirements and specifications set out in BS5857:2012 paragraph 6.2.2 figure 3 and BS1722 : Part 4

**PROPOSED TREES**

- Contractor to ascertain the location of all sewers and services prior to tree planting;
- No trees to be planted within 3 metres of sewers or services or other easement recommended by the relevant statutory undertaker without the use of tree root barriers. Use Green Blue Urban Reroot 2000 in the vicinity of dwellings and Reroot Ribbed Barrier in the vicinity of paths/hard surfaces and services (refer to tree pit details). All tree pits with root barriers are subject to engineer's approval;
- Feathered trees in soft landscape to be secured using an underground guying system in accordance with the tree pit details.
- Where necessary increase tree pit dimensions to ensure that tree pits are at least 75mm deeper and 150mm wider than the rootball. Break up bottom of pits to a depth of 150mm. Compacted glazed sides of pits should be roughened;
- Cut back any broken or damaged roots to sound growth;
- Plant trees upright, in the centre of the pit and at original soil depth;

**SHRUBS**

- Plant shrubs in accordance with the landscape drawings. All non-perishable containers shall be removed and any damaged roots carefully pruned. Excavate planting holes 75mm wider than the root spread. Each plant shall be planted at it's correct depth, to the original soil or nursery mark, to BS4428:1989. Compost and sand additives shall be worked well into backfill whilst backfilling is in progress, taking care not to raise general levels of the soil so that bed edges are less than 65-80mm below the adjacent pavement edges;
- Gaps around the root ball shall be filled to half its depth and firmed by hand, but avoiding damage to the roots. Further soil can then be used to fill the voids to the surface and firmed by treading, taking care not to over firm and damage roots;
- Water in all plants within 2 hours of planting with 25 litres minimum per metre squared;
- Prune back leggy growth immediately after planting;
- Approved bark mulch to a depth of 75mm.

**TURFING**

- All areas shall be cultivated in accordance with the specification for cultivated topsoil. No turf shall be laid until the topsoiling in whole or in part has been satisfactorily completed by being brought to an even tilth and firmness;
- Turf to be in accordance with BS3936:1998+A1:2013 and the recommendations for turfing are contained in BS4428:1989.
- The grass shall be of a close texture, of even density and green in colour and excluding any perennial weeds with the exception of clover. The turf shall be sufficiently fibrous for the turves to hold together when handled but excess fibre or material is undesirable. The grass shall have been closely mown and shall not exceed 25mm in height. It shall not be visible affected by pests or diseases.;
- For large areas, it is advisable that supplies of turves shall be delivered at the appropriate intervals throughout the turfing programme to avoid stacking turves for long periods. Turves shall be stacked on cleared ground to a maximum height of 1000mm, unless arranged on pallets for mechanical handling. After four days stacked turves shall be inspected at frequent intervals; any which show signs of deterioration should be used without delay or laid out. Turf shall be delivered to site within 36 hours of lifting. If stacked, turf shall be placed grass to grass. If kept for any period, the turf shall be laid out and maintained as for turfed areas;

- Turf shall be laid when the weather and soil conditions are suitable and where possible, preference shall be given to autumn and early winter operations. No turf shall be laid in exceptionally dry, frosty or other unsustainable weather conditions;
- Turves from the stack shall be wheeled to position on planks laid closely side by side. Adequate timber planks shall be used to support workmen and barrows and provide access. The turf shall be laid on prepared soil bed, closely butted and firmed. In large areas, turf shall be positioned in consecutive rows with broken joints as with stretcher bond brickwork. The turf shall be laid off planks, working over turves previously laid. Where necessary, the turves shall be lightly and evenly firmed with wooded beaters, the bottom of the beater being frequently scraped clean of accumulated soil or mud. A dressing of finely sifted topsoil (complying with BS3883:2015) or fine peat shall be applied and well brushed into the joints. Any inequalities in finished levels owing to variations in turf thickness or uneven soil shall conform to the levels indicated, allowing for final settlement. Turf edges and margins shall be laid with whole turves.

**WATERING AND WEEDING**

- Planting areas are to be brought up to field capacity on completion of planting and during maintenance visits subject to prevailing conditions;
- Remove all weed growth by hand as necessary to ensure weed free and tidy planting beds. Take great care not to disturb sheet or bark mulch. All weeds shall be removed from the site. Two visits are required per growing season where sheet mulch is specified, and 6 visits per growing season are required where no sheet mulch is specified. Visits should occur approximately monthly, subject to weather conditions.

**SHRUBS, TREES & TIDYING BEDS**

- Remove all litter and debris at each visit, leaving the site clean and tidy. Firm in and straighten out plants loosened and prune out dead, leggy and broken branches, without damage to natural habit of the plant. In the case of trees, a suitably skilled and qualified arboriculturalist shall carry out such pruning. Tree stakes and ties shall be checked, adjusted and replaced as necessary.

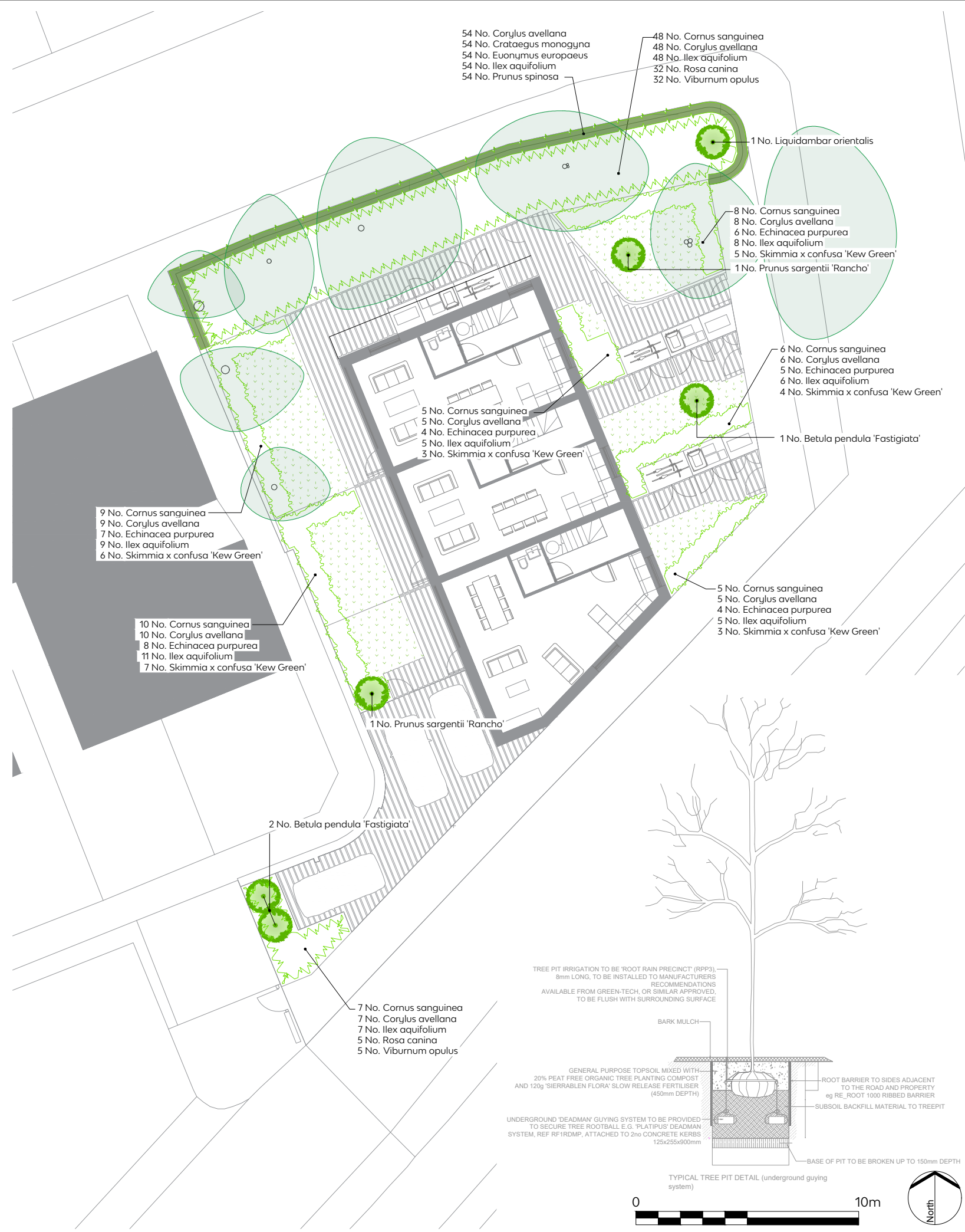
**SHRUBS, TREES & TIDYING BEDS**

- Remove all litter and debris at each visit, leaving the site clean and tidy. Firm in and straighten out plants loosened and prune out dead, leggy and broken branches, without damage to natural habit of the plant. In the case of trees, a suitably skilled and qualified arboriculturalist shall carry out such pruning. Tree stakes and ties shall be checked, adjusted and replaced as necessary.

This document should not be relied on or used in circumstances other than those for which it was prepared and for which Tyler Grange was appointed.

Tyler Grange accepts no responsibility for this document to any other party other than the person by whom it was appointed.

Tyler Grange Group Limited  
Copyright © Tyler Grange Group Limited 2022



- Site Boundary
- Retained tree - Extent of tree pruning
- Proposed trees
- Proposed Shrub Mix
- Proposed Native Shrub Mix
- Proposed Species Rich Native Hedge
- Proposed Turf

Code	Description	Date
C	Updates to planting areas	03-11-2022
B	Architect comments	01-04-2022
A	Updated General Arrangement	31-03-2022
Rev	Description	Date

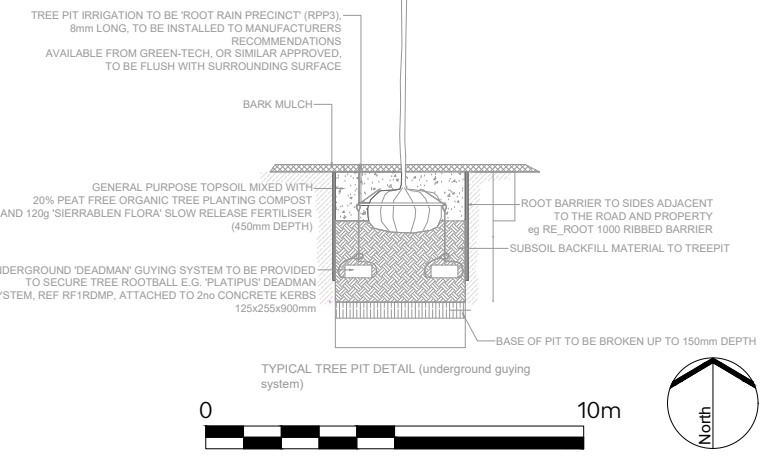
**Tyler Grange**  
 Head Office: Marsden Estate, Rendcomb, Cirencester, Gloucestershire GL7 7EX  
 E: info@tylergrange.co.uk  
 W: www.tylergrange.co.uk

Project title  
**St Margarets Business Park Car Park**

Drawing title  
**Soft Landscape Proposals**

Scale Date: 1:200 @ A3 03.11.2022  
 Drawn Checked: ECW RM

Drawing number: 13340/P05  
 Revision: C



0 10m