

# Fire Safety Strategy

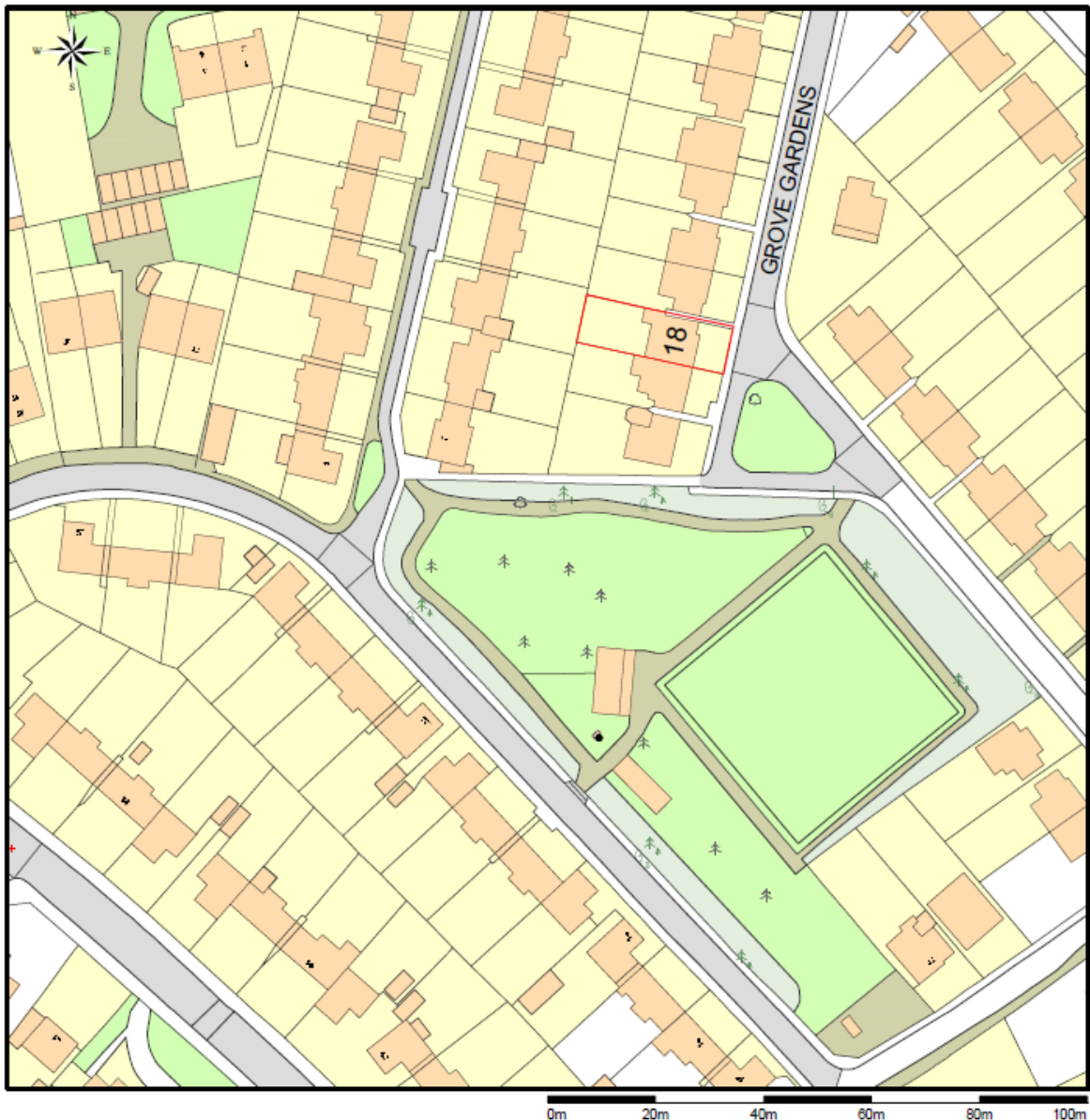
18 Grove Gardens, Teddington, TW11 8AP

This report has been prepared by David Beer B.Sc (Hons) B.Arch Dip.Arch ARB RIBA.

The proposals comply with Part B of the Building Regulations and:

**1. Identify suitably positioned unobstructed outside space for;**

a. Fire appliances to be positioned on Grove Gardens.



b. Appropriate for use as an evacuation assembly point – the footpath in Grove Gardens to the south of the site. (See extract above)

**2. Are designed to incorporate appropriate features which reduce the risk to life and risk of serious injury in the event of a fire; including appropriate fire alarm systems and passive and active fire safety measures;**

Mains operated interlinked smoke alarms and heat detectors will be provided to comply with BS 5839-6.

All new doors to the protected stairway will be 30 minutes fire rated.

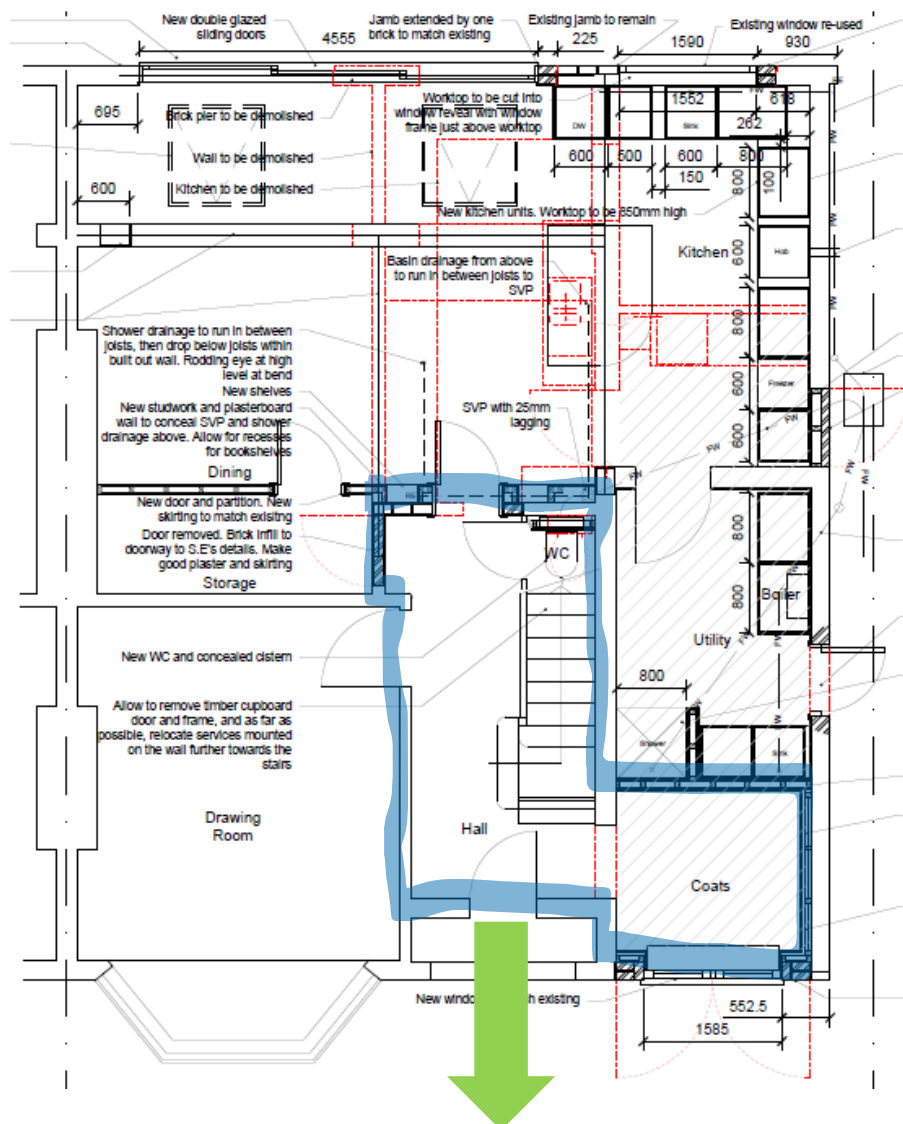
**3. Are constructed in an appropriate way to minimise the risk of fire spread;**

All new doors to the protected stairway will be 30 minutes fire rated.

60 minutes fire rating will be maintained at the party wall.

**4. Provide suitable and convenient means of escape, and associated evacuation strategy for all building users;**

The existing fire escape routes from the ground floor via external doors will be maintained. The existing escape from the first floor via the stair to the ground floor will be maintained. A new 30 minute fire door will separate the kitchen from the stair. The existing escape route to the front garden will be maintained.



30 minutes  
fire  
protection

**5. Develop a robust strategy for evacuation which can be periodically updated and published, and which all building users can have confidence in;**

Occupants should move to the final exit (front door) leading onto the front garden in the event of an emergency. Occupants should then proceed to the assembly point on the pavement in Grove Garden.

**6. Provide suitable access and equipment for firefighting which is appropriate for the size and use of the development;**

Access to the house is from Grove Gardens. Mains water can be accessed from Grove Gardens.