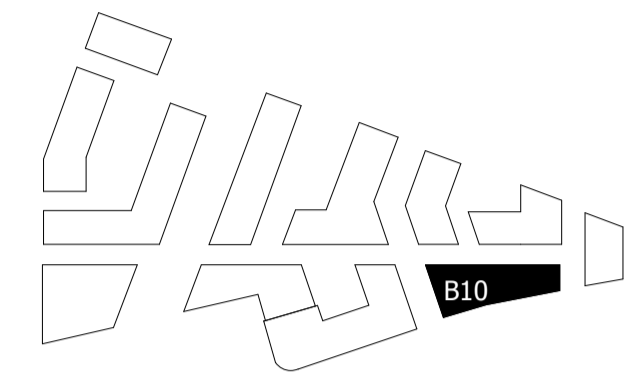
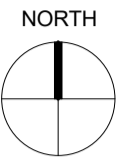


**NOTES:**

DO NOT SCALE FROM THIS DRAWING. ALL DIMENSIONS TO BE CHECKED ON SITE. ALL OMISSIONS AND DISCREPANCIES TO BE REPORTED TO THE ARCHITECT IMMEDIATELY.

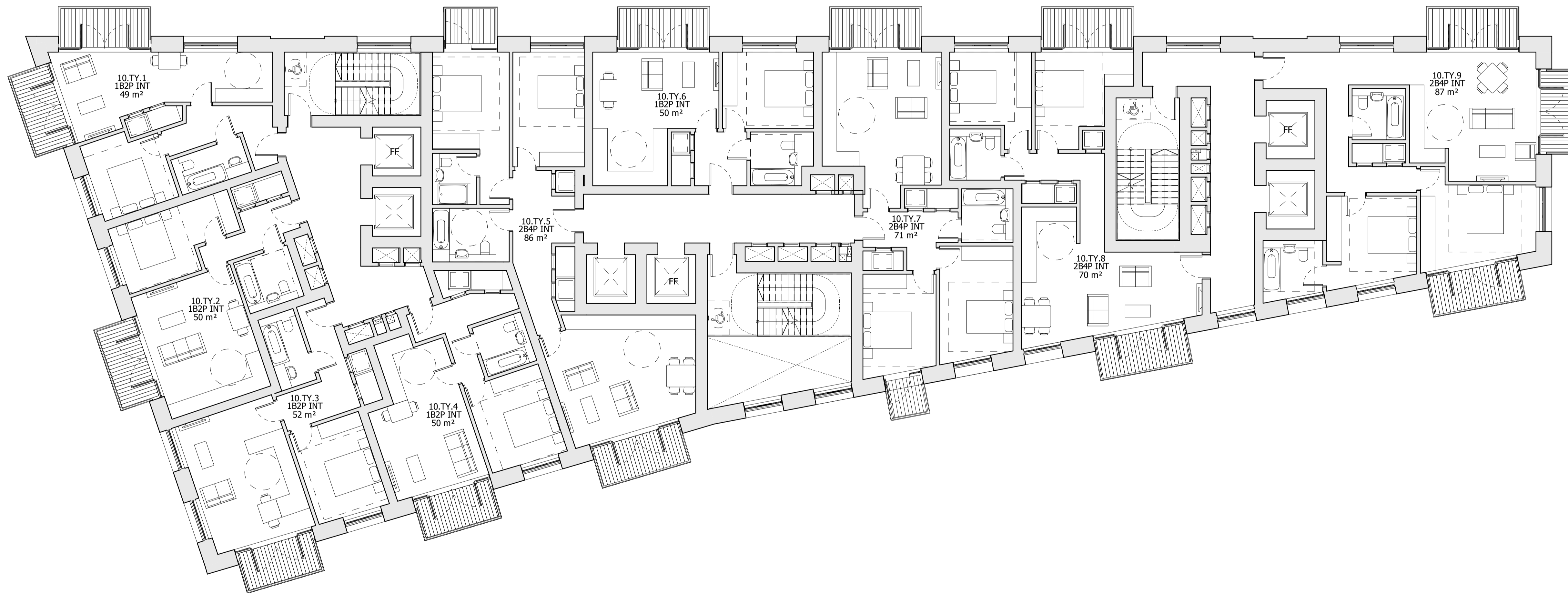
ALL RIGHTS RESERVED. THIS WORK IS COPYRIGHT AND NOT BE REPRODUCED OR COPIED OR MODIFIED IN ANY FORM OR BY ANY MEANS, GRAPHIC ELECTRONIC OR MECHANICAL, INCLUDING PHOTOCOPYING WITHOUT THE WRITTEN PERMISSION OF SQUIRE AND PARTNERS ARCHITECTS.



**NOTE:**

TYPICAL LEVEL APPLIES TO LEVELS 01, 02, 03 & 04

BALCONIES ON BUILDING 10 OVERSAIL THE SITE BOUNDARY



**INTERNAL LAYOUTS SHOWN ILLUSTRATIVELY ONLY**

LBRUT 2 APPLICATION AMENDMENTS	21/07/22	BJ	F
LBRUT 2 APPLICATION	25/02/22	BJ	E
FINAL DRAFT HYBRID SUBMISSION	07/01/22	RKB	D
GLA SUBMISSION	27/04/20	BJ	C
DRAFT GLA SUBMISSION	24/01/20	KH	B
FINAL DRAFT PLANNING APPLICATION	21/10/19	KH	A
LEGAL REVIEW	13/09/19	KH	-

Revision description	Date	Check	Rev

**SQUIRE & PARTNERS**

The Department Store  
248 Ferndale Road London SW9 8FR  
T: 020 7278 5555 F: 020 7239 0495

info@squireandpartners.com  
www.squireandpartners.com

Project  
**Stag Brewery**  
Richmond

Drawing  
**BUILDING 10 - PROPOSED TYPICAL FLOOR PLAN (FIRST TO FOURTH LEVELS)**

Drawn	Date	Scale	@
AJ	26/07/19	1:100	A1
		1:200	A3

Job Number	Drawing number	Revision
18125	C645_B10_P_TY_001	F

