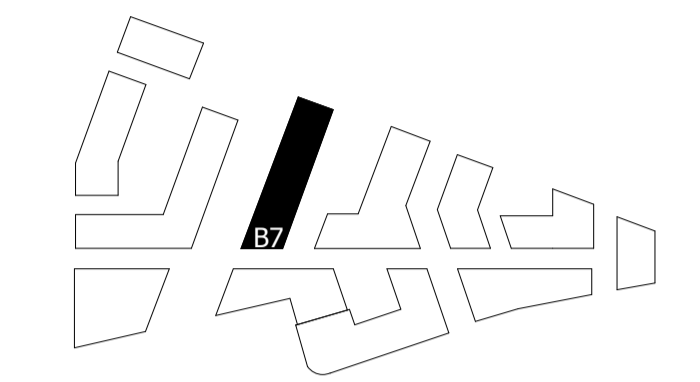
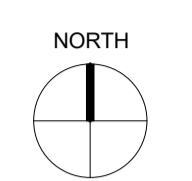


NOTES:

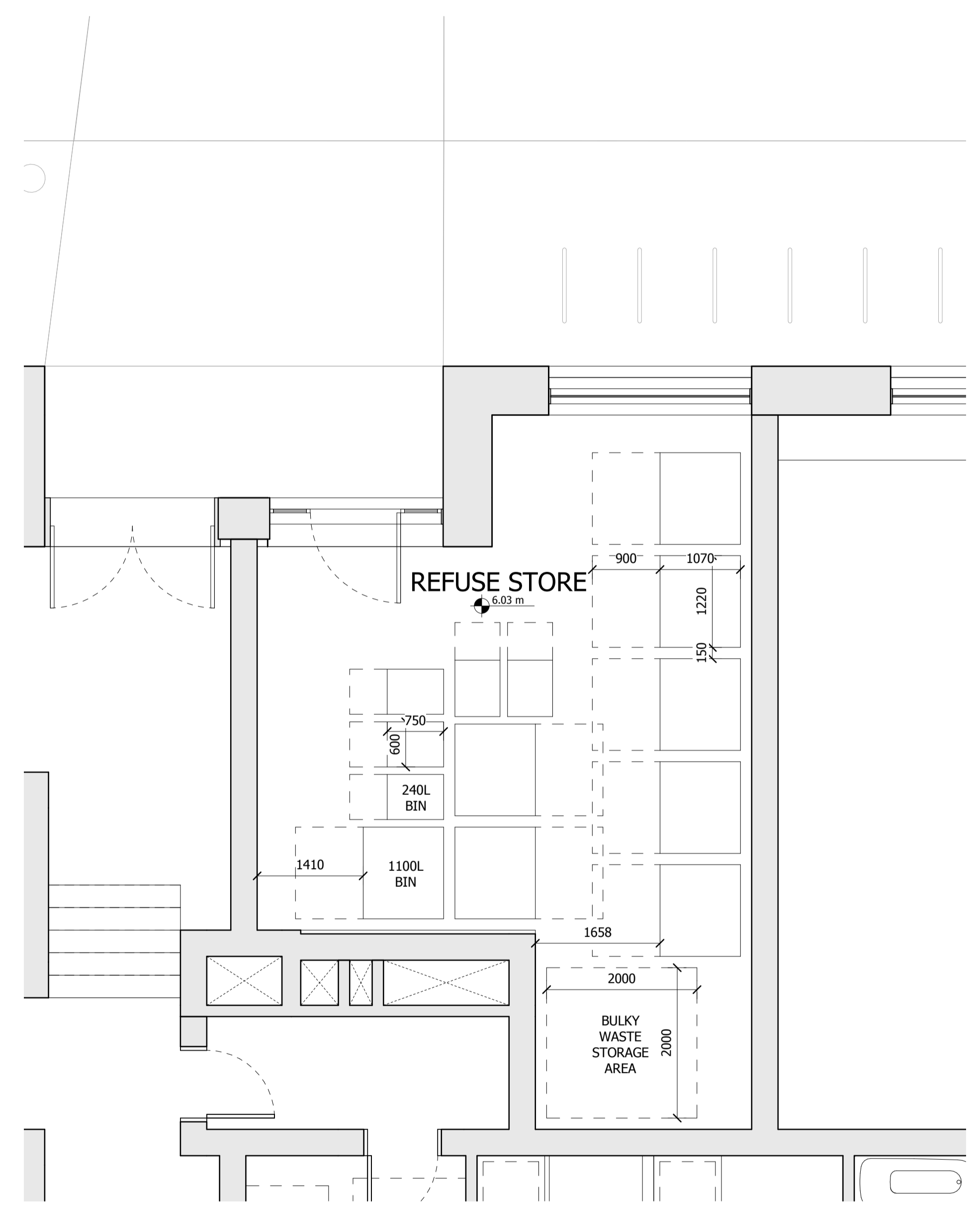
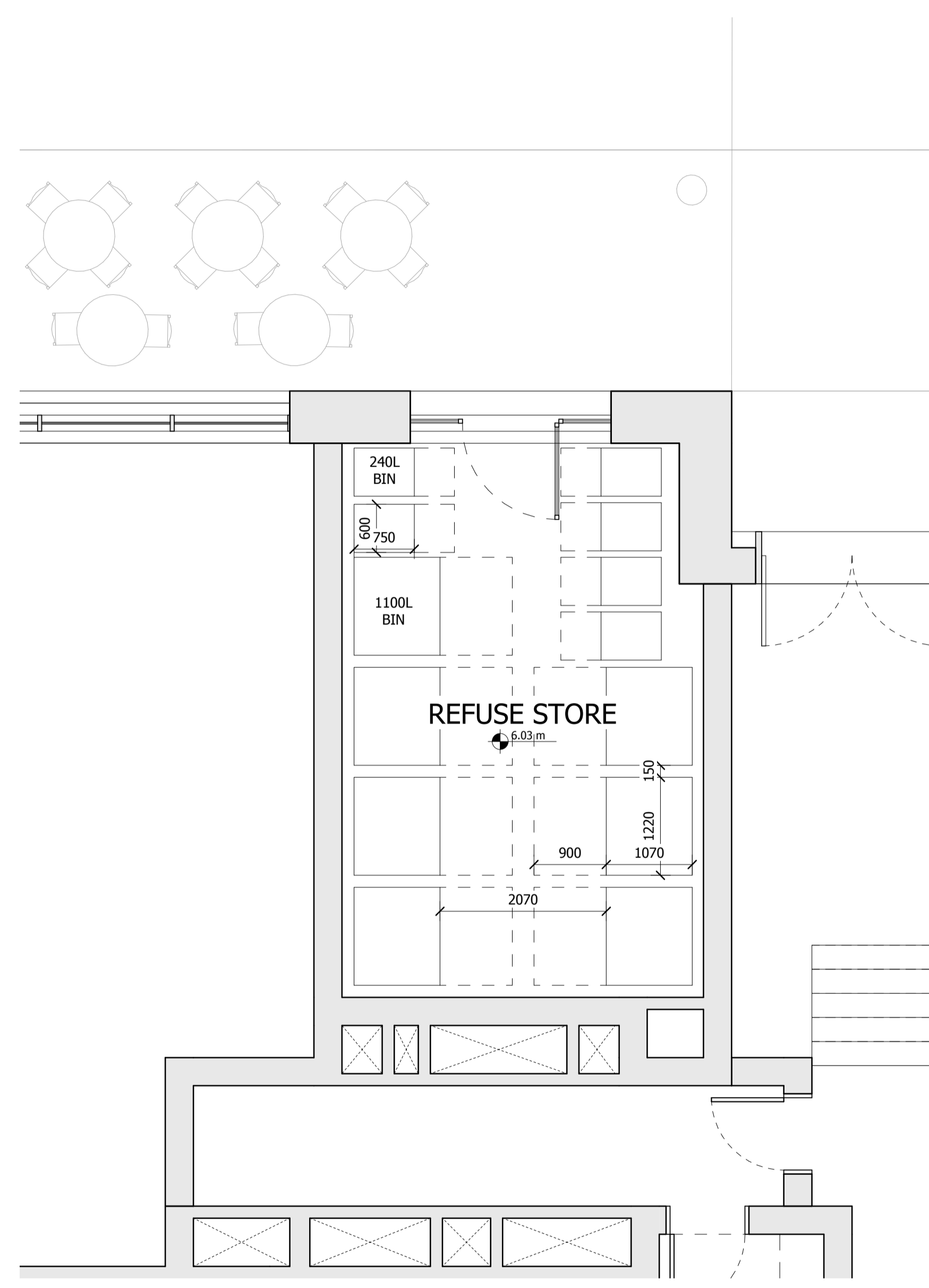
DO NOT SCALE FROM THIS DRAWING. ALL DIMENSIONS TO BE CHECKED ON SITE. ALL OMISSIONS AND DISCREPANCIES TO BE REPORTED TO THE ARCHITECT IMMEDIATELY.

ALL RIGHTS RESERVED. THIS WORK IS COPYRIGHT AND CANNOT BE REPRODUCED OR COPIED OR MODIFIED IN ANY FORM OR BY ANY MEANS, GRAPHIC ELECTRONIC OR MECHANICAL, INCLUDING PHOTOCOPIING WITHOUT THE WRITTEN PERMISSION OF SQUIRE AND PARTNERS ARCHITECTS.



NOTES:

Building 07 refuse stores contain 15 1100L Eurobins 11 240L food waste bins and a bulky waste storage area



INTERNAL LAYOUTS SHOWN ILLUSTRATIVELY ONLY

Revision description	Date	Check	Rev
LBRUT 2 APPLICATION AMENDMENTS	21/07/22	BJ	-

SQUIRE & PARTNERS

The Department Store
248 Ferndale Road London SW9 8FR
T: 020 7278 5555 F: 020 7239 0495

info@squireandpartners.com
www.squireandpartners.com

Project
Stag Brewery
Richmond

Drawing
BUILDING 07 - GROUND FLOOR
LEVEL REFUSE STORE PLANS

Drawn	Date	Scale
KHO	07/08/22	1:50 @ A1 1:100 @ A3
Job Number	Drawing number	Revision
18125	C645_B07_P_00_005	-

