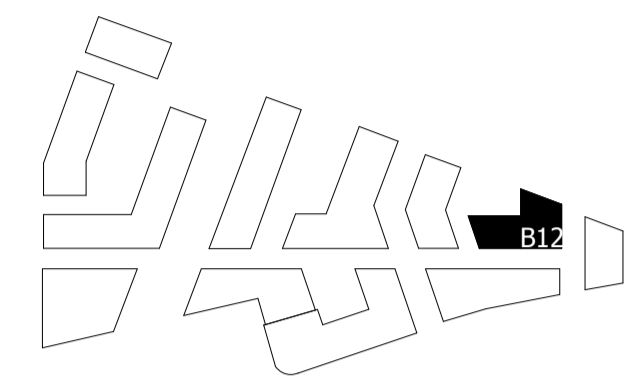
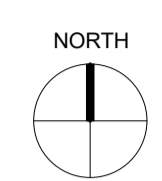


NOTES:

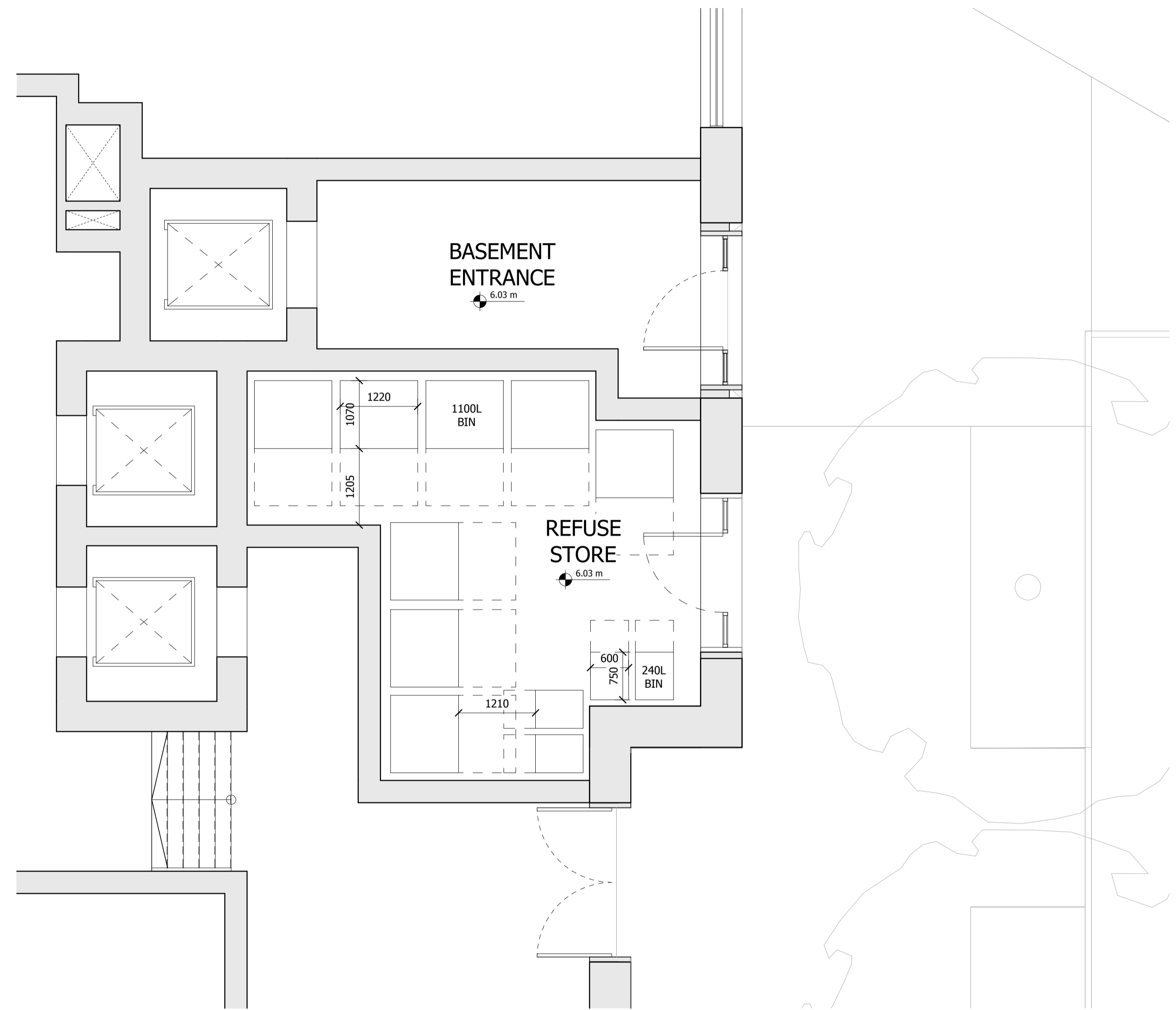
DO NOT SCALE FROM THIS DRAWING. ALL DIMENSIONS TO BE CHECKED ON SITE. ALL OMISSIONS AND DISCREPANCIES TO BE REPORTED TO THE ARCHITECT IMMEDIATELY.

ALL RIGHTS RESERVED. THIS WORK IS COPYRIGHT AND CANNOT BE REPRODUCED OR COPIED OR MODIFIED IN ANY FORM OR BY ANY MEANS, GRAPHIC ELECTRONIC OR MECHANICAL, INCLUDING PHOTOCOPIING WITHOUT THE WRITTEN PERMISSION OF SQUIRE AND PARTNERS ARCHITECTS.



NOTES:

Building 12 refuse store contains 8 1100 L Eurobins and 4 240L food waste bins



INTERNAL LAYOUTS SHOWN ILLUSTRATIVELY ONLY

LBRUT 2 APPLICATION AMENDMENTS	21/07/22	BJ	E
LBRUT 2 APPLICATION	04/02/22	BJ	D
GLA SUBMISSION	27/04/20	BJ	C
DRAFT GLA SUBMISSION	24/01/20	KH	B
FINAL DRAFT PLANNING APPLICATION	21/10/19	KH	A
LEGAL REVIEW	03/09/19	KH	-

Revision description	Date	Check	Rev

SQUIRE & PARTNERS

The Department Store
248 Ferndale Road London SW9 8FR
T: 020 7278 5555 F: 020 7239 0495

info@squireandpartners.com
www.squireandpartners.com

Project
Stag Brewery
Richmond

Drawing
BUILDING 12 - GROUND FLOOR
LEVEL REFUSE STORE PLAN

Drawn	Date	Scale
KHO	16/01/18	1:50 @ A1 1:100 @ A3
Job Number	Drawing number	Revision
18125	C645_B12_P_00_004	E

