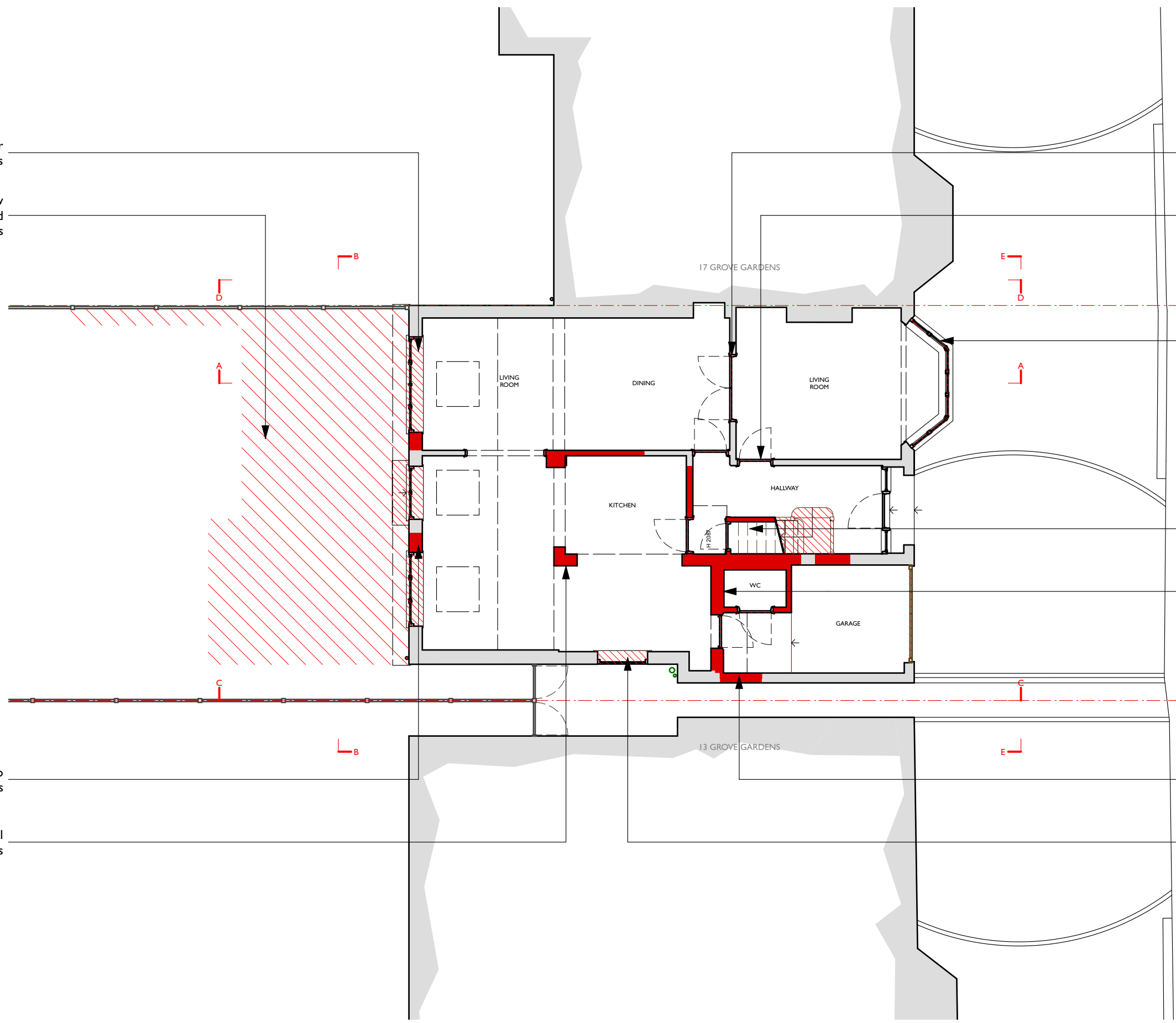


Remove all rear windows and doors  
Remove garden slab to allow for new decking and flowerbeds

Remove existing internal double doors and infill  
Remove all internal doors to be replaced



Replace painted metal front windows

Remove and replace staircase

Partly remove internal partitions

Partly remove rear wall to allow for new openings  
Partly remove internal partitions

Partly remove side wall to create new window opening  
Remove side window and infill opening

Note:  
1. The design and drawing remains the property of Andrew Dobson Architects Ltd.  
2. The client is licensed to use the design and drawing for this project only. This licence is non-transferable. The design and drawings shall not be reproduced, up-loaded to the internet or traced without the permission of Andrew Dobson Architects Ltd.  
3. Do not scale off this drawing. Check all dimensions on site and report any discrepancies to Andrew Dobson Architects Ltd before commencing work.  
© andrew dobson architects



**Andrew Dobson Architects**

Studio 316, Metal Box Factory  
30 Great Guildford Street, London, SE1 0HS  
Phone: 020 7736 4390  
info@andrewdobsonarchitects.co.uk  
www.andrewdobsonarchitects.co.uk

15 Grove Gardens, Teddington, TW11 8AR

Ground Floor Plan - Existing

Planning	23/01/23
I:100 @ A3	FN AD

718-PI.001-D