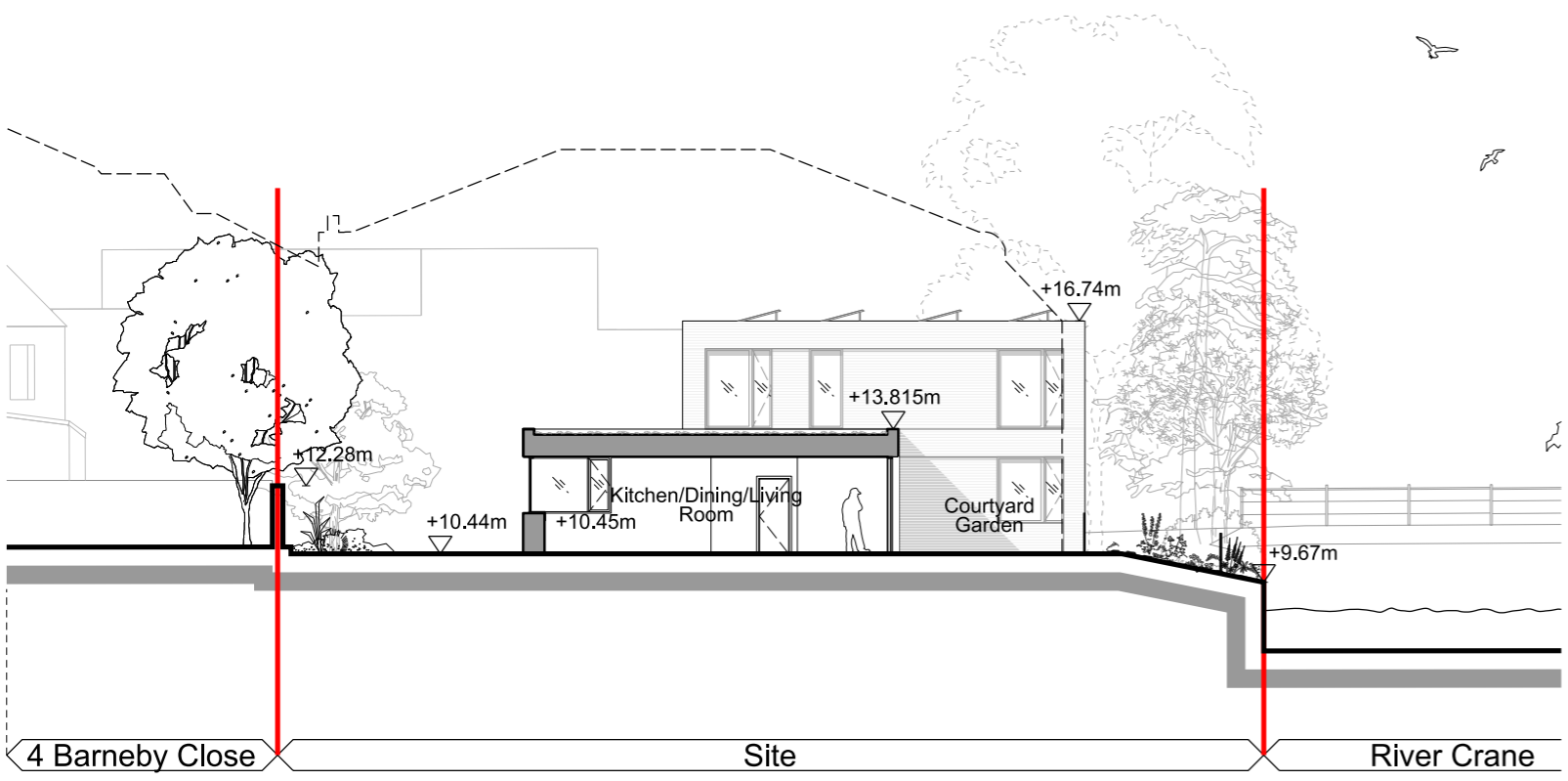
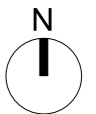
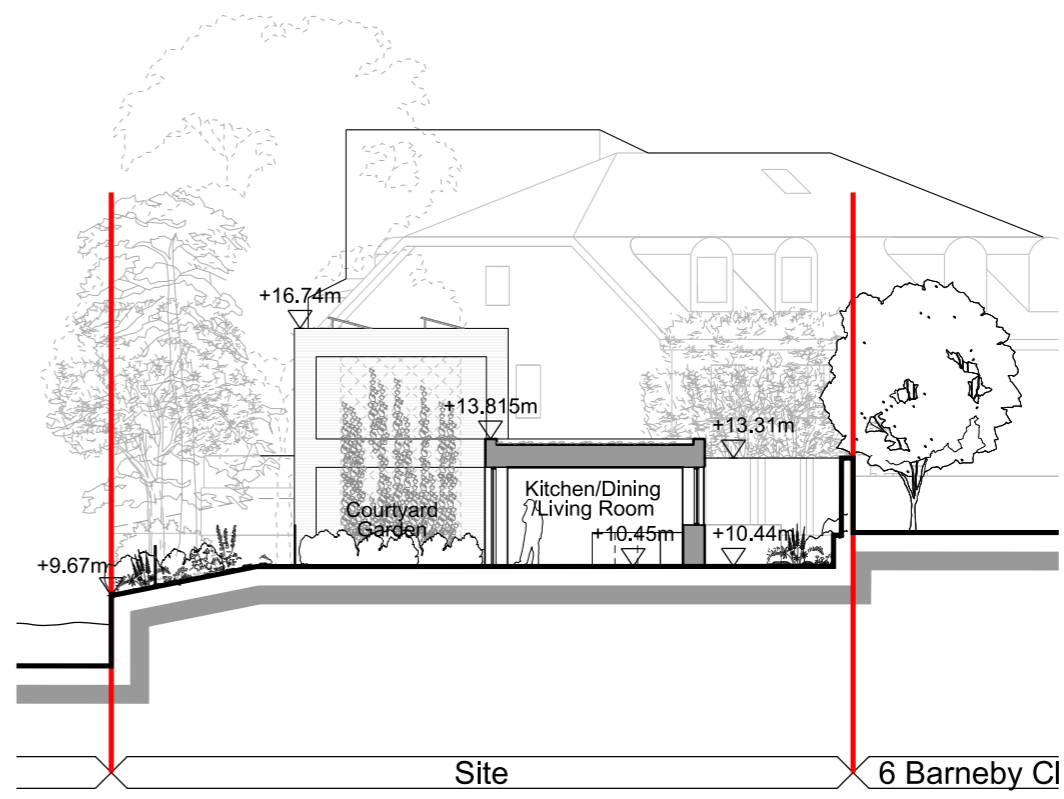


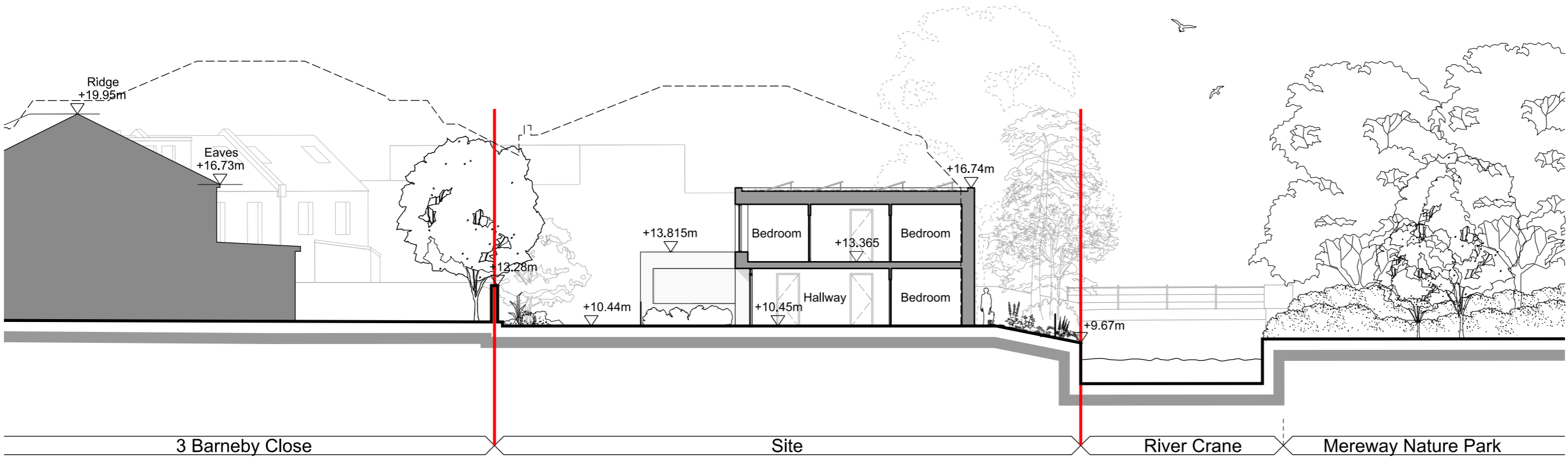
0 1m 5m



01
0302 Section CC
1:200@A3



03
0302 Section EE
1:200@A3



02
0302 Section DD
1:200@A3

Revision	Date	Description
P1	2022-12-13	Issued For Planning Submission

© copyright Wimshurst Pelleriti, all rights reserved 2022

Do not scale-off this drawing. Wimshurst Pelleriti take no responsibility for any dimensions obtained by measuring or scaling from this drawing and no reliance may be placed on such dimensions, if no dimension is given. It is the responsibility of the recipient to ascertain the dimension specifically from the Architect or by site measurement.

The sizing of all structural and service elements must always be checked against the relevant engineers drawings. No reliance should be placed upon sizing information shown on this drawing.

Project
Mereway
Austin Road, Richmond, London

Drawing Title
GA Sections
Proposed CC, DD & EE

Drawing Number	Revision
WP-0653-A-0302	P1

Scale @ A3	Revision Date
1:200	2022-12-13

Drawing Purpose
PLANNING

WIMSHURST PELLERITI

The Mews,
6 Putney Common, SW15 1HL

0208 780 2206
Info@wp.uk.com
wimshurst-pelleriti.com

