



# Barnes Hospital

LANDSCAPE DAS

10 OCTOBER 2022

EXTERIOR  
ARCHITECTURE

# EXTERIOR ARCHITECTURE

## Barnes Hospital

### LANDSCAPE DAS

<b>Date</b>	10/10/2022
<b>Revision</b>	P3
<b>Written</b>	ExA
<b>Checked</b>	Patrick Jones Associate Director
<b>Approved</b>	Sam Martin Director
<b>Doc Ref:</b>	ExA_1954_DAS_900

Revision	Description	Date
P0	PLANNING	2021.07.30
P1	PLANNING	2021.11.15
P2	PLANNING	2022.02.11
P3	PLANNING	2022.10.10

# Contents

<b>1 Introduction</b>	<b>5</b>
<i>Site Location</i>	5
<b>2 Landscape Analysis</b>	<b>7</b>
<i>The Site in its Ecological Context</i>	7
<i>Sunlight studies</i>	8
<i>Landscape constraints and opportunities</i>	10
<b>3 Landscape Vision &amp; Approach</b>	<b>16</b>
<i>Design Approach &amp; Character Areas</i>	17
<b>4 Landscape Design</b>	<b>19</b>
<i>Landscape Masterplan</i>	19
<i>Orchard Garden</i>	20
<i>Play Garden</i>	21
<i>Long Border Garden</i>	22
<i>Grow Garden</i>	23
<i>Eco Walk</i>	24
<b>5 Landscape Strategies</b>	<b>26</b>
<i>Green and Blue Infrastructure</i>	27
<i>Urban Green Factor</i>	28
<i>Amentiy &amp; Public Open Space</i>	29
<i>Furniture Strategy</i>	32
<i>Tree Strategy</i>	33
<i>Soft Landscape Strategy</i>	36
<i>Lighting Strategy</i>	40
<b>6 Public Open Space Assessment</b>	<b>42</b>
<i>Public Open Space Assessment</i>	42
<b>7 Landscape Management Strategy</b>	<b>43</b>
<i>Future Management Plan</i>	43



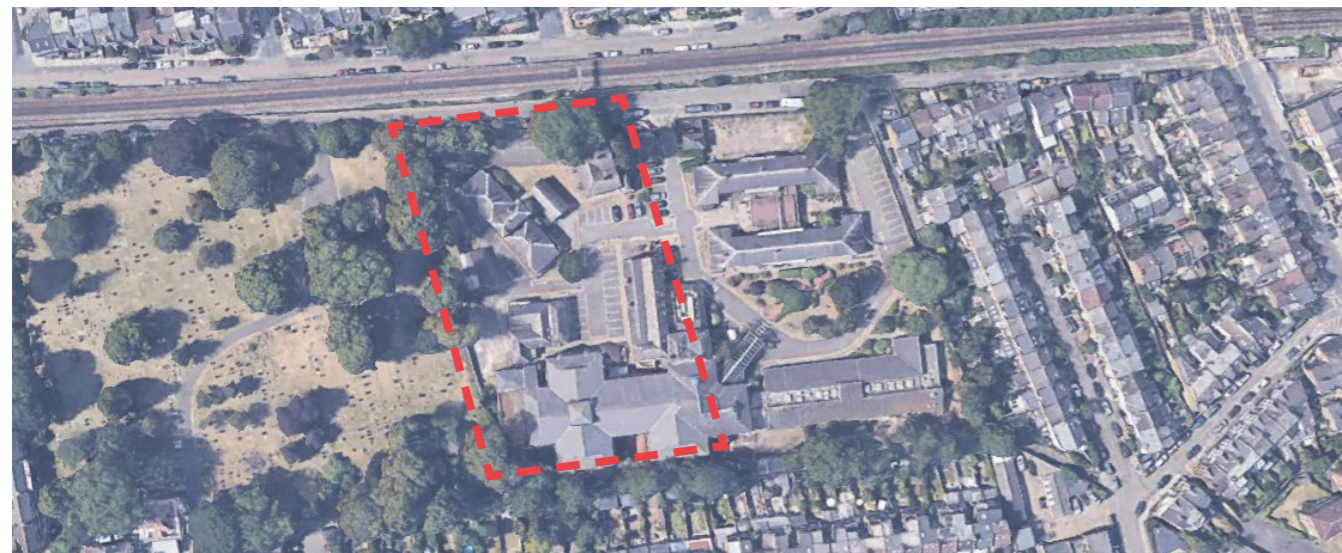
# 1 Introduction

## Site Location

The Barnes Hospital site is located off of South Worple Way in Barnes, London. The original hospital building on site, opened 1889 as The Barnes Isolation Hospital, where it treated patients for infectious diseases such as diphtheria and scarlet fever. The existing buildings were extensively renovated in 2001 when a new extension was added. In more recent history, the hospital is known for providing community and inpatient mental health services.

The site is predominantly surrounded by residential developments. To the north of the site, lies the river Thames. To the west, is the Old Mortlake Cemetary. Further east down South Worple Way, is a direct connection to Barnes Common.

The site is bordered by a variety of existing mature trees on the west and south boarder.



Aerial site context photo

## Barnes Site Context Photos



## **02 Landscape Analysis**