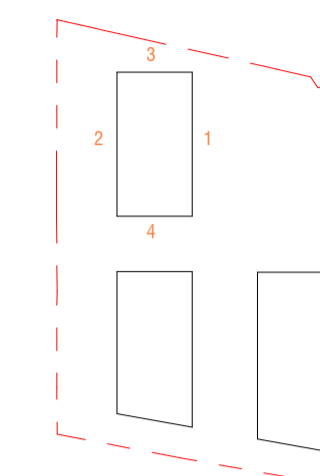


Figured dimensions only are to be taken from this drawing. All dimensions are to be checked on site before any work is put in hand.

metres 2 4 6 8 10

SCALE BAR: 1:100



- Common Materials
- 1. Natural slate roof tiles
 - 2. Zinc cladding
 - 3. Brown-toned metalwork
 - 4. Clear laminated glass
 - 5. Black grey window frames

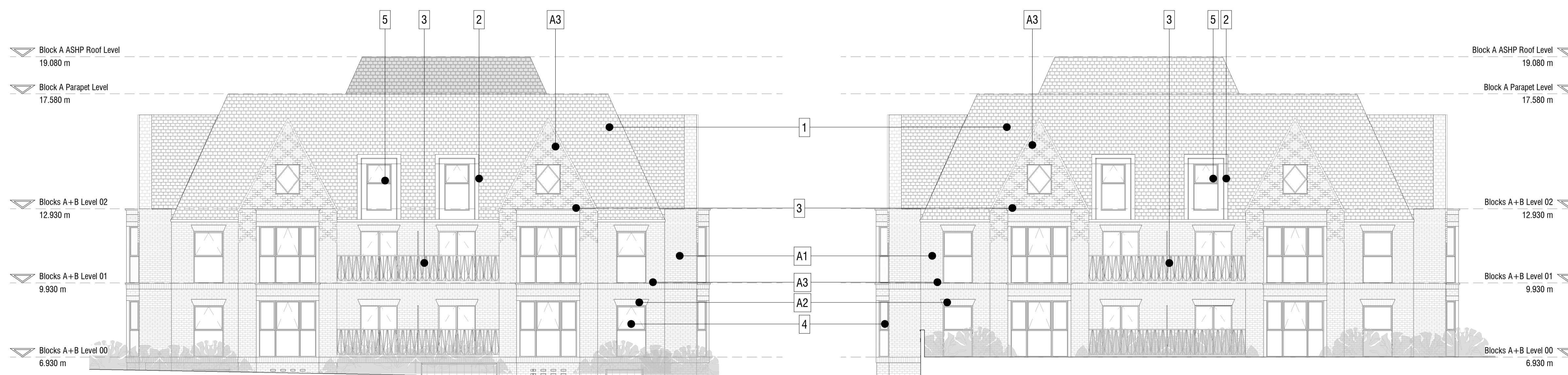
- Block A Brickwork
- A1. Main brick
 - A2. Lighter Accent Brick
 - A3. Darker Accent Brick



1 Block A Elevation 1
1:100



2 Block A Elevation 2
1:100



3 Block A Elevation 3
1:100

4 Block A Elevation 4
1:100

Revision	Description	Date	Drawn	Checked
6	For Planning Submission	14/09/2022	FS	OM
5	For Planning Submission	31/05/2022	FS	OM
4	For Planning Submission	12/08/2021	FS	OM
3	Update Desing Freeze	23/07/2021	FS	OM
2	Draft Planning Submission	09/07/2021	FS	OM
1	For Information	23/06/2021	FS	OM

**SCOTT
BROWNRIGG**

77 Endell Street
London WC2H 9DZ
T +44 (0)20 7240 7766
W scottbrownrigg.com

Clients Name
Star Land Realty UK Ltd.

Job Title
Barnes Hospital Site

Drawing Title
Block A Elevations

Scale
As indicated @A1

SBR Project No.
18387

SBR Project No. Originator Volume Level Type Role Number
18387-SBR-BA-XX-DR-A-84101

Subsidiary Code Status
S4 - FOR STAGE APPROVAL

Rev
6