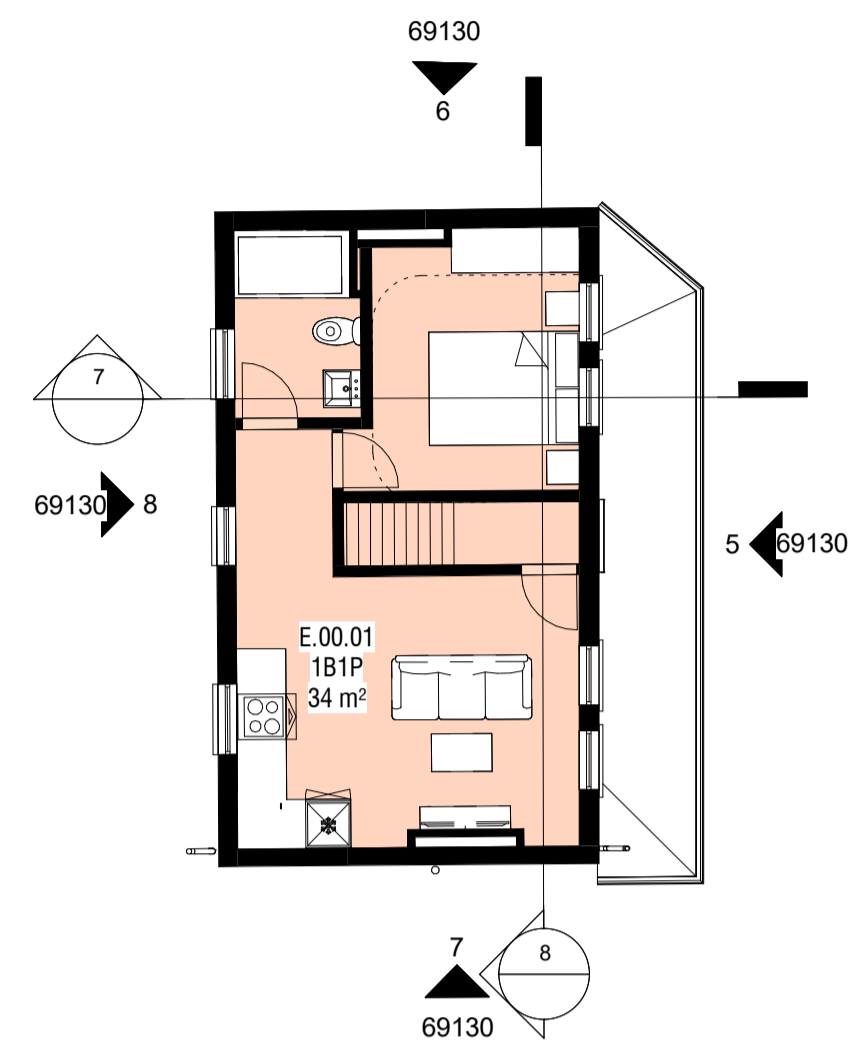
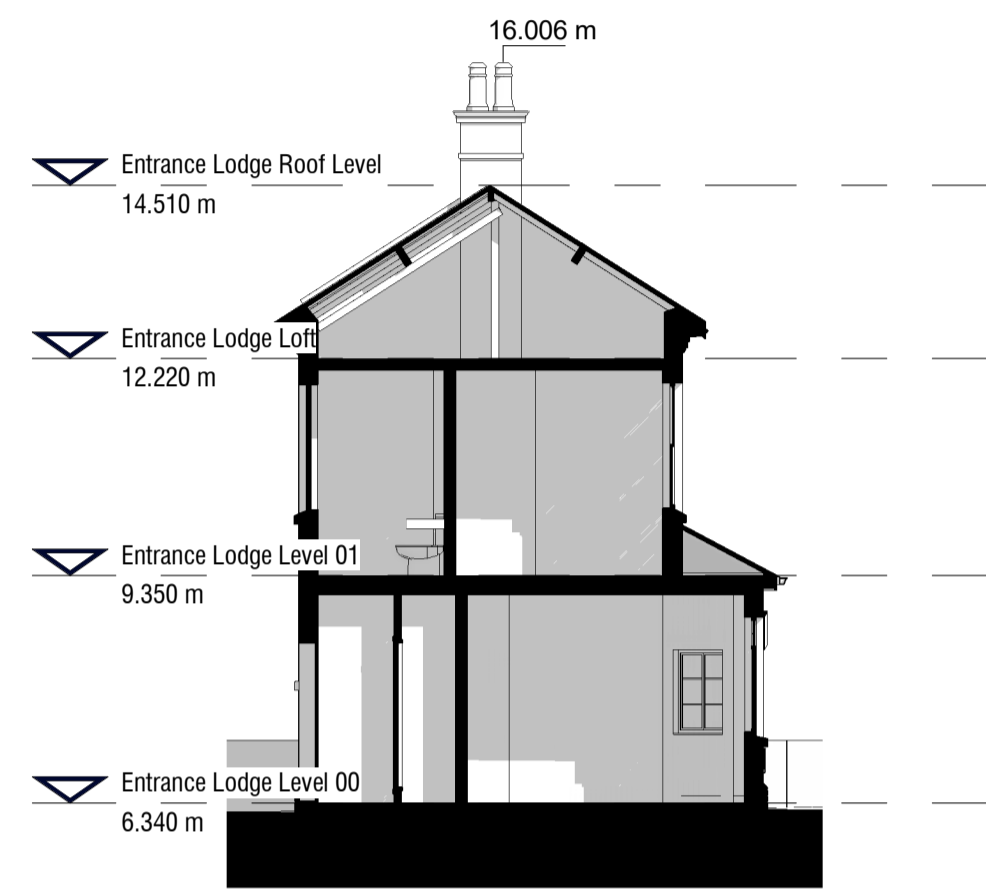


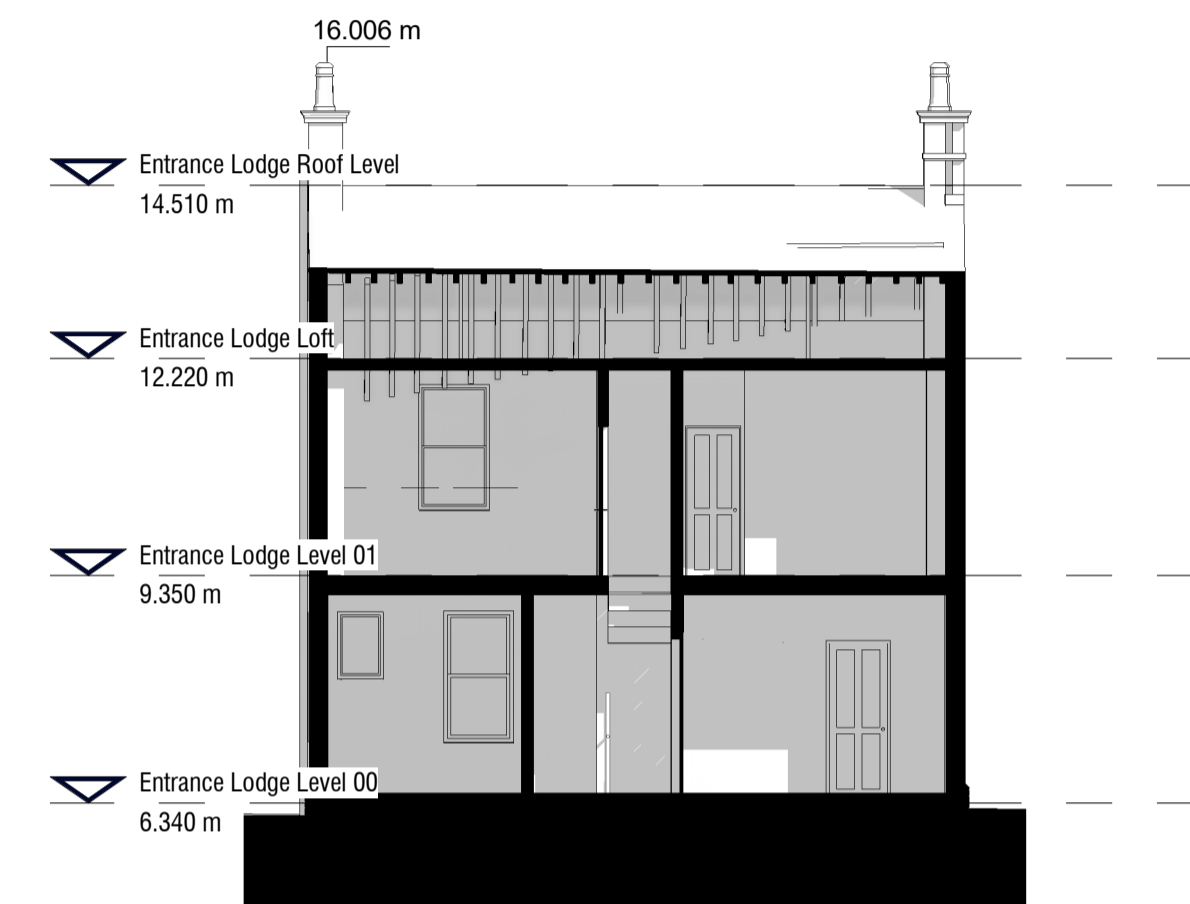
1 Entrance Lodge Ground Level  
1:100



2 Entrance Lodge First Level  
1:100



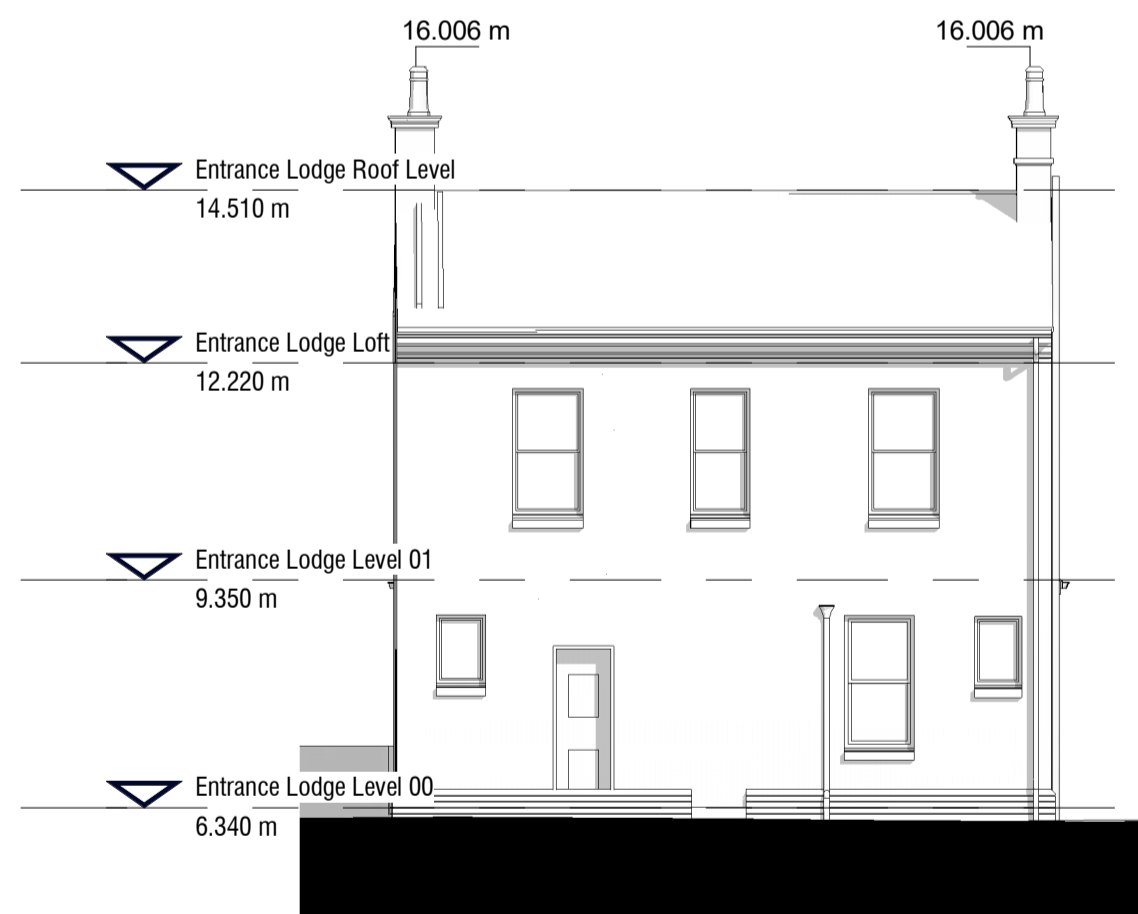
7 Entrance Lodge Short Section  
1:100



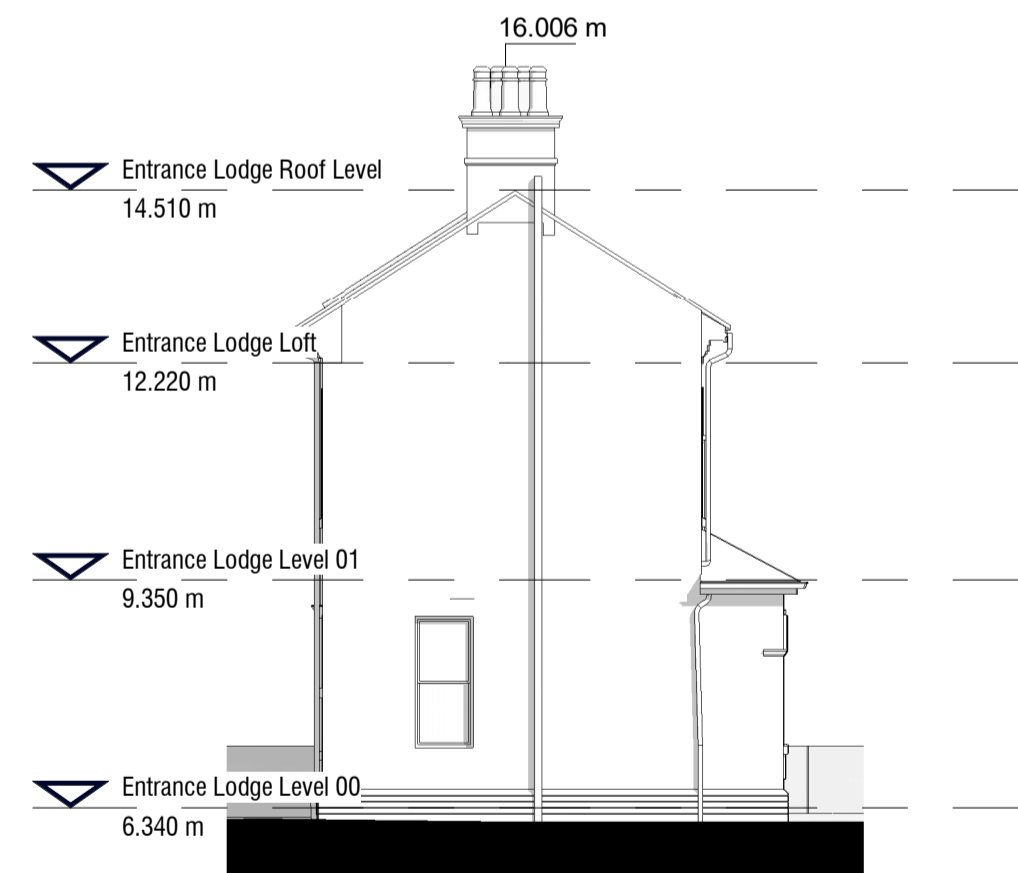
8 Entrance Lodge Long Section  
1:100



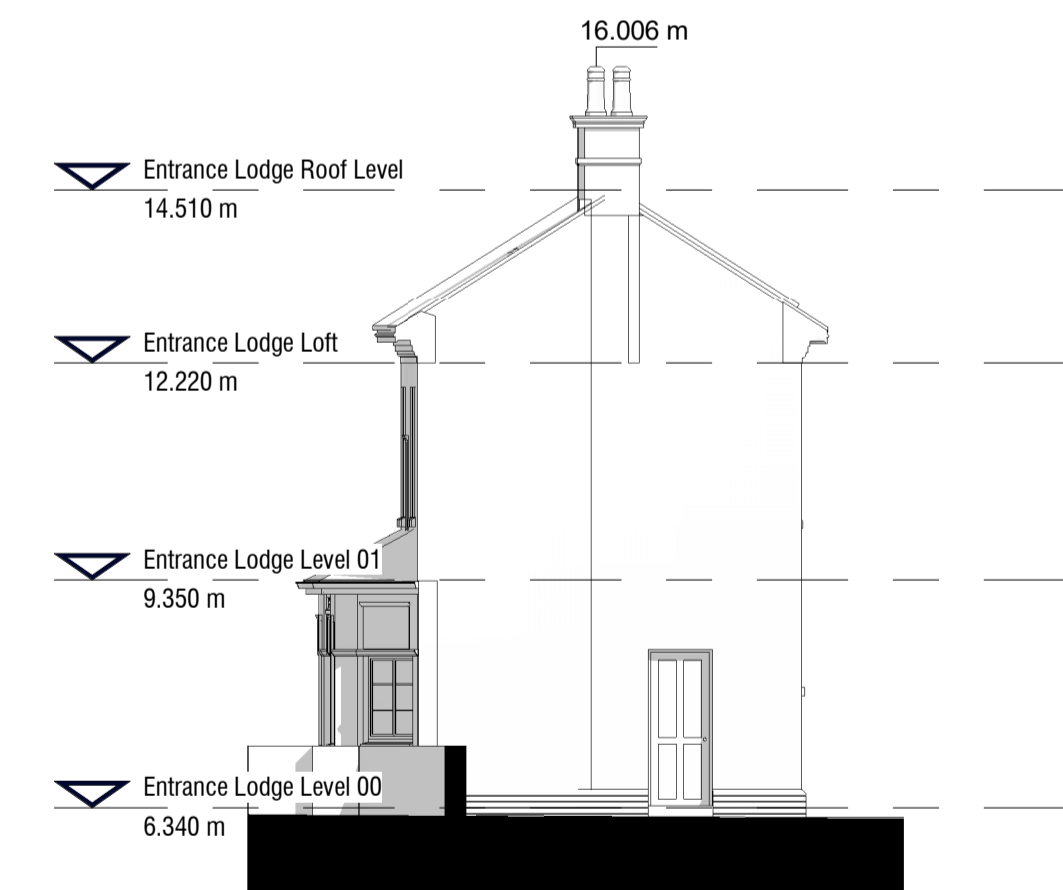
3 Entrance Lodge East Elevation  
1:100



4 Entrance Lodge West Elevation  
1:100



5 Entrance Lodge South Elevation  
1:100



6 Entrance Lodge North Elevation  
1:100

Revision	Description	Date	Drawn	Checked
5	For Planning Submission	04/02/2022	FS	OM
4	For Planning Submission	12/11/2021	FS	OM
3	For Planning Submission	12/08/2021	FS	OM
2	Update Desing Freeze	23/07/2021	FS	OM
1	Draft Planning Submission	09/07/2021	FS	OM

**SCOTT BROWNRIGG**

77 Endell Street  
London WC2H 9DZ  
T +44 (0)20 7240 7766  
W scottbrownrigg.com

Clients Name  
Star Land Realty UK Ltd.

Job Title  
Barnes Hospital Site

Drawing Title  
Entrance Lodge

Scale  
1 : 100 @A1

SBR Project No.  
18387

SBR Project No. Originator Volume Level Type Role Number  
**18387-SBR-BD-XX-DR-A-83004**

Subsity Code Status Rev  
S4 - FOR STAGE APPROVAL **5**