



---

**LONDON SQUARE DEVELOPMENTS LTD**

**FORMER GREGGS BAKERY SITE  
TWICKENHAM  
TW2 6RT**

**Energy Strategy and LZC Report  
Industrial-Led Scheme**

**Desco (Design & Consultancy) Ltd**

6<sup>th</sup> Floor, AMP House  
Dingwall Road  
Croydon  
CR0 2LX

Telephone +44 (0)208 6865583

Issue No.: 05

Date: 17<sup>th</sup> March 2023

Ref: 1823-50-RPT-09

Author: BDF

Checked/Authorised: SB

---

Mechanical and Electrical Building Services Design Consultants



Desco (Design & Consultancy) Ltd incorporating HBS Consulting Engineers

Registered in England & Wales No. 3613462 Registered Office Azure House, 2 Azure Court, Doxford International Business Park, Sunderland SR3 3BE

<b>Edition</b>	<b>Date</b>	<b>Amendments</b>
1	3 <sup>rd</sup> March 2022	Residential & Industrial Scheme
2	5 <sup>th</sup> April 2022	Updated Planning Submission
3	15 <sup>th</sup> July 2022	Updated Industrial Unit
4	20 <sup>th</sup> July 2022	Minor amendments
5	17 <sup>th</sup> March 2023	Costs updated to £95/tonnes and payment based on site wide CO2 figures

<b>EXECUTIVE SUMMARY</b> .....	<b>3</b>
<b>RELEVANT PLANNING POLICY AND TARGETS</b> .....	<b>12</b>
LONDON PLAN 2021 .....	12
LONDON BOROUGH OF RICHMOND HAVE CONFIRMED THE CASH OFFSETTING PAYMENT AS FOLLOWS: .....	12
<b>BASELINE EMISSIONS ASSESSMENT</b> .....	<b>14</b>
DWELLINGS - REGULATED ENERGY .....	14
<b>PASSIVE ENERGY REDUCTIONS (HIERARCHY LEVEL 1 – BE LEAN)</b> .....	<b>16</b>
BUILDING FABRIC .....	16
INFILTRATION AND AIR TIGHTNESS .....	17
<b>EFFICIENT ENERGY DELIVERY (HIERARCHY LEVEL 2 – BE CLEAN)</b> .....	<b>18</b>
EXISTING DISTRICT HEATING .....	18
SITE BASED DISTRICT HEATING .....	18
INDIVIDUAL AIR SOURCE HEAT PUMP SYSTEMS - TOWN HOUSES .....	23
LIGHTING AND METERING .....	24
MECHANICAL VENTILATION WITH HEAT RECOVERY (MVHR) .....	24
HEATING AND COOLING – SHELL AND CORE INDUSTRIAL UNITS .....	25
SUMMARY .....	25
<b>LZC ENERGY FEASIBILITY (HIERARCHY LEVEL 3 - BE GREEN)</b> .....	<b>27</b>
FEASIBILITY MATRIX .....	30
<b>ENERGY MONITORING (HIERARCHY LEVEL 4 - BE SEEN)</b> .....	<b>30</b>
<b>ENERGY ASSESSMENT</b> .....	<b>31</b>
LOW OR ZERO CARBON ENERGY ASSESSMENT .....	31
RENEWABLE ENERGY ASSESSMENT .....	31
SUMMARY OF EMISSIONS .....	32
<b>CASH IN LIEU CARBON PAYMENT</b> .....	<b>36</b>
<b>APPENDIX A – LOCAL HEAT NETWORKS</b> .....	<b>37</b>
<b>APPENDIX B – SAP ANALYSIS</b> .....	<b>38</b>
<b>APPENDIX C – BE LEAN BRUKL REPORT FOR INDUSTRIAL UNITS</b> .....	<b>51</b>
<b>APPENDIX D – BE CLEAN BRUKL REPORT FOR INDUSTRIAL UNITS</b> .....	<b>56</b>
<b>APPENDIX E – BE GREEN BRUKL REPORT FOR INDUSTRIAL UNITS</b> .....	<b>61</b>
<b>APPENDIX F – GLA SUMMARY TABLES</b> .....	<b>66</b>

## EXECUTIVE SUMMARY

### Development Description

The project comprises of the Demolition of existing buildings (with retention of a single dwelling) and redevelopment of the site to provide 97 residential units and 883 sqm industrial floorspace (Use Class E(g)(iii)) and 117sqm of affordable workspace (Use Class E) with associated hard and soft landscaping, car parking and highways works and other associated works.

This report outlines the proposed measures for achieving the planning policy requirements set by the local authority for reducing energy consumption and employing Low Zero Carbon (LZC) energy sources to meet the following targets:

- To meet guidance wherever possible as defined in the GLA Energy Assessment Guidance dated March 2021
- To meet London Plan 2021 targets with respect to CO<sub>2</sub> emissions and other energy targets and methods.
- To minimise and eradicated overheating in dwellings in line with CIBSE standards.
- To consider LZC technologies to reduce energy consumption.
- To consider overheating in dwellings in line with GLA methodology for overheating risk analysis.
- Non-residential spaces – To achieve the mandatory number of ENE04 credits for an 'Excellent' BREEAM rating.

Current research into local heat networks within the Twickenham area, shows that no existing heat networks are within the vicinity of the site and there currently no proposals for any heat networks in consideration within the local area.

Planning stage analysis indicates that the installation LZC air source heat pumps and roof mounted photovoltaic cells in conjunction with high levels of insulation, good air tightness and good artificial lighting performance enables the project to meet the targets identified.

The application of general energy efficiency measures prior to consideration of LZC energy sources is crucial to meeting the above targets, as it has a multiple effect of reducing running costs, reducing baseline CO<sub>2</sub> emissions and reducing the absolute size of any renewable technologies / financial levies to be applied.

The proposed approach concurs with the GLA Energy Hierarchy:

1. *Use less energy i.e., Be Lean;*
2. *Supply energy efficiently i.e., Be Clean;*
3. *Use renewable energy i.e., Be Green;*
4. *Monitor energy performance i.e., Be Seen.*

In line with the above philosophy, the application of low energy lighting and passive improvements to building fabric are proposed.

For residential elements the baseline Carbon Dioxide emissions and LZC energy contribution, on which the %<sup>1</sup> reduction is based, have been calculated using approved SAP 10 software which represents the latest calculation tool as required under The Building Regulations Part L1A 2013.

For non-residential elements (883 sqm industrial floorspace (Use Class E(g)(iii)) and 117sqm of affordable workspace (Use Class E)) the baseline Carbon Dioxide emissions and LZC energy contribution, on which the % reduction is based, have been calculated using approved DSM Level 5 IESVE 2021 software which represents the latest calculation tool as required under The Building Regulations Part L2A 2013. This software is also used for overheating analysis.

Analysis shows that that the development will meet Building Regulations compliance through energy efficient measures alone and then further reductions are achieved through use of air source heat pumps and PV's to beat the 35% improvement target.

---

<sup>1</sup> The GLA calls for carbon reductions the equivalent of 10% (residential) & 15% (non-residential) over the Part L 2013 building regulations using passive measures only and 35% using renewable technologies as a minimum. 100% savings on residential dwellings are targeted.

**Overall the site emissions provide a 73% improvement on combined building regulations L1 & L2 target emissions (for both residential and industrial buildings).**

Further reductions in line with GLA requirements for zero carbon homes will be met by way of cash in lieu payment due to limitations at roof level for the placement of additional photovoltaic cells or other renewable technologies.

### **Summary of Potential Proposals**

#### **Apartments**

Heating/Cooling system:	Zeroth district heating network
Domestic Hot Water:	Zeroth district heating network and immersion heater 'boost' facility
Ventilation:	MVHR mechanical supply and extract ventilation with heat recovery.
Passive measures:	Enhanced U-Values to all new build elements
Air tightness:	APR = 3 m <sup>3</sup> / m <sup>2</sup> ·h @ 50pa
Lighting:	High efficiency LED and compact fluorescent lighting throughout.
On site LZC technology:	Air Source heat pumps

#### **Townhouses**

Heating/Cooling system:	Air source heat pump
Domestic Hot Water:	Air source heat pump and immersion heater 'boost' facility
Ventilation:	MVHR mechanical supply and extract ventilation with heat recovery.
Passive measures:	Enhanced U-Values to all new build elements
Air tightness:	APR = 3 m <sup>3</sup> / m <sup>2</sup> ·h @ 50pa
Lighting:	High efficiency LED and compact fluorescent lighting throughout.
On site LZC technology:	Air Source Heat Pumps & Photovoltaics

## Industrial Units

Heating and cooling system: Heat Pump fed Radiant Panel Heaters with Mechanical Cooling	
Domestic Hot Water:	Hot water by means of air sourced heat pumps
Ventilation:	Mechanical ventilation with heat recovery
Insulation:	Enhanced U-Values to all elements.
Air tightness:	APR = 3.0m <sup>3</sup> / m <sup>2</sup> ·h @ 50pa.
Lighting:	High efficiency lamps throughout.
On site LZC technology:	Air source heat pumps and Photovoltaics

## Summary of Emissions

Standard Assessment procedure (SAP) 10 has been used to demonstrate compliance with Building regulations approved document Part L 2013 and the GLA's current planning policy targets.

## Residential – SAP10

### Air Source heat pumps and Photovoltaics (PV)

To achieve a minimum 35% reduction over the Target Emission Rate (TER) with enhanced fabric U-Values and infiltration rate, using the SAP 10 Performance method, the residential apartments (blocks A, F & E) will be served by a centralised air source heat pump and condenser water loop connected to individual heat pumps within each apartment providing space heating, hot water generation and tempered cooling. The residential townhouses will be served by standalone air source heat pump systems, to provide space heating and hot water generation.

PV's will be installed on each of the townhouses (blocks C, D & G). The PV panels will be sized and the quantity selected to contribute to the site wide reduction in carbon dioxide emissions. The PV's will be sized to achieve a peak output of approximately 35kW<sub>e</sub>. The impact on energy savings are highlighted in the table below.

**Residential – SAP10**

	Carbon dioxide emissions (Tonnes CO <sub>2</sub> per annum)	
	Regulated	Unregulated
Baseline: Part L 2013 of the Building Regulations Compliant Development	121	-
After energy demand reduction (Be Lean)	103	-
After application of ASHP's (Be Clean)	41	-
After renewable energy (Be Green)	32	-

Table 1b - Carbon Dioxide Emissions after each stage of the Energy Hierarchy (Residential)

	Regulated carbon dioxide savings	
	(Tonnes CO <sub>2</sub> per annum)	(%)
Savings from energy demand reduction	18	15%
Savings from ASHP's	62	51%
Savings from renewable energy	9	7%
Total Cumulative Savings	85	74%
Annual savings from offset payment	32	
<b>Tonnes of CO<sub>2</sub></b>		
Cumulative savings for offset payments	954	
Cash in-lieu contributions (£)	90,630	

Table 2b - Regulated carbon dioxide savings from each stage of the Energy Hierarchy (Residential)

Final dwelling emissions rate incorporates energy efficiency, efficient supply of energy and renewable energy technologies. The following SAP analysis demonstrates RIBA stage 2 status and shall not be the final proposal due to design, build ability and cost considerations.



### Resistance electric heating and PV's

Resistance electric heating and PV panels are under consideration to be incorporated into the residential energy strategy and further SAP analysis calculations will be carried out to check the viability in the next stages of design development.

### Non-Domestic – SAP10

#### Industrial Units

To achieve a minimum 35% reduction over the TER with enhanced fabric U-Values and infiltration rate, using approved SAP 10 software, the industrial units will be served heat pump fed radiant panel heaters with mechanical cooling, with mechanical ventilation with heat recovery to provide the fresh air requirements to the building. Hot water will be generated by means of air sourced heat pumps. LED lighting will be installed throughout the building. PV panels will be sized and the quantity selected to contribute to the site wide reduction in carbon dioxide emissions. The PV's will be sized to achieve a peak output of approximately 21 kWe. The impact on energy savings are highlighted in the table below.

### Non-Domestic – SAP10

	Carbon dioxide emissions (Tonnes CO <sub>2</sub> per annum)	
	Regulated	Unregulated
Baseline: Part L 2013 of the Building Regulations Compliant Development	20	-
After energy demand reduction (Be Lean)	14	-
After application of ASHP's (Be Clean)	12	-
After renewable energy (Be Green)	7	-

Table 3b - Carbon Dioxide Emissions after each stage of the Energy Hierarchy (Non-domestic)

	Regulated carbon dioxide savings	
	(Tonnes CO <sub>2</sub> per annum)	(%)
Savings from energy demand reduction	5	27%
Savings from ASHP's (Be Lean)	3	14%
Savings from renewable energy (Be Clean)	5	23%
Total Cumulative Savings (Be Green)	13	65%

Table 4b - Regulated carbon dioxide savings from each stage of the Energy Hierarchy (Non-domestic)

	Annual Shortfall (Tonnes CO <sub>2</sub> )	Cumulative Shortfall (Tonnes CO <sub>2</sub> )
Total Target Savings	7	-
Shortfall	-6	-174
Cash in-lieu contributions (£)	0*	-

Table 5b – Shortfall in regulated carbon dioxide savings (Non-domestic)

\*The GLA Carbon Emissions Reporting Spreadsheet has calculated a minus figure for the Non domestic industrial buildings. This is due to the ASHP and PV allocated at the Be Green stage. This has **NOT** been deducted from the Domestic cash in lieu payment.

**Site Wide Emissions - SAP10**

	<b>Total regulated emissions (Tonnes CO<sub>2</sub> per annum)</b>	<b>CO2 Savings (Tonnes CO<sub>2</sub> per annum)</b>	<b>Percentage Savings (%)</b>
Baseline: Part L 2013 of the Building Regulations Compliant Development	141	-	-
After energy demand reduction (Be Lean)	117	24	17%
After application of ASHP's (Be Clean)	52	65	46%
After renewable energy (Be Green)	39	14	10%
Total Cumulative Savings		103	73%
Off-set – Tonnes of CO2 over 30 years		779	-

Table 6b - Totalised Regulated carbon dioxide savings from each stage of the Energy Hierarchy (Site Wide)

## Introduction

This report provides preliminary proposals for complying with the planning policy set by London Borough of Richmond, London Plan 2021 and the planning requirement for reducing energy consumption below the basic statutory requirement laid down in the Building Regulations Part L1A & L2A 2013.

It is very important for energy efficiency as well as renewable energy to be considered for the development. Buildings that use less energy will therefore need to use a smaller amount of renewable energy to supply the expected proportion of the building's needs.

The reduction in carbon dioxide emissions is quantified as a proportion of baseline carbon emissions for the development (TER). Such reductions take into account energy efficient techniques and technologies such improved insulation, energy efficient lighting etc, before the inclusion of LZC technologies.

All calculations are based on limited planning stage information, for strategy purposes and as such are approximate.

Each LZC technology has been given an evaluation with regard to application to the new development.

## Relevant Planning Policy and targets

London Plan 2021

- A. Major development should be net zero-carbon. This means reducing greenhouse gas emissions in operation and minimising both annual and peak energy demand in accordance with the following energy hierarchy:**
- 1) be lean: use less energy and manage demand during operation**
  - 2) be clean: exploit local energy resources (such as secondary heat) and supply energy efficiently and cleanly**
  - 3) be green: maximise opportunities for renewable energy by producing, storing and using renewable energy on-site**
  - 4) be seen: monitor, verify and report on energy performance.**
- B. Major development proposals should include a detailed energy strategy to demonstrate how the zero-carbon target will be met within the framework of the energy hierarchy.**
- C. A minimum on-site reduction of at least 35 per cent beyond Building Regulations 2013 is required for major development. Residential development should achieve 10 per cent, and non-residential development should achieve 15 per cent through energy efficiency measures. Where it is clearly demonstrated that the zero-carbon target cannot be fully achieved on-site, any shortfall should be provided, in agreement with the borough, either:**
- 1) through a cash in lieu contribution to the borough's carbon offset fund, or**
  - 2) off-site provided that an alternative proposal is identified and delivery is certain.**
- D. Boroughs must establish and administer a carbon offset fund. Offset fund payments must be ring-fenced to implement projects that deliver carbon reductions. The operation of offset funds should be monitored and reported on annually.**
- E. Major development proposals should calculate and minimise carbon emissions from any other part of the development, including plant or equipment, that are not covered by Building Regulations, i.e. unregulated emissions.**
- F. Development proposals referable to the Mayor should calculate whole lifecycle carbon emissions through a nationally recognised Whole Life-Cycle Carbon Assessment and demonstrate actions taken to reduce life-cycle carbon emissions**

### **London Plan Policy S1 2 (2021)**

London Borough of Richmond have confirmed the cash offsetting payment as follows:

**A nationally recognised non-traded price of £95/tonne has been tested as part of the viability assessment for the London Plan which boroughs may use to collect offset payments.**

London Borough of Richmond

Ref: 1823-50-RPT-09

Date: 17<sup>th</sup> March 2023

Revision: 05

### **Climate Change Adaption**

- A. The Council will promote and encourage development to be fully resilient to the future impacts of climate change in order to minimise vulnerability of people and property.**
- B. New development, in their layout, design, construction, materials, landscaping and operation, should minimise the effects of overheating as well as minimise energy consumption in accordance with the following cooling hierarchy:**
  - 1) minimise internal heat generation through energy efficient design**
  - 2) reduce the amount of heat entering a building in summer through shading, reducing solar reflectance, fenestration, insulation and green roofs and walls**
  - 3) manage the heat within the building through exposed internal thermal mass and high ceilings**
  - 4) passive ventilation**
  - 5) mechanical ventilation**
  - 6) active cooling systems (ensuring they are the lowest carbon options).**
- C. Opportunities to adapt existing buildings, places and spaces to the likely effects of climate change should be maximised and will be supported.**

### **Policy LP 20**

#### **Tackling the climate emergency (Strategic Policy)**

- A. Climate change is now the greatest challenge facing our society. The Council will promote zero carbon development, with the aim that all buildings and infrastructure projects in the borough will be net-zero carbon by 2050. This will require substantial reductions in greenhouse gas emissions and will also reduce fuel poverty and improve long term energy security for Richmond’s residents and businesses. Development must not exacerbate climate change. Development should increase local resilience to current and future impacts of climate changes, especially for the most vulnerable people and property.**
- B. This will be achieved by requiring all development to:**
  - 1) reduce greenhouse gas emissions in accordance with the London Plan’s Energy Hierarchy and support the transition to a low carbon society by maximising energy efficiency, zero and low carbon heat and local renewable energy generation;**
  - 2) follow the principles of the circular economy and support effective resources use to ensure that they are kept in use for as long as possible and thereby minimise waste;**
  - 3) reuse and refurbishment in preference to demolition and new construction;**
  - 4) demonstrate that they are well designed, fully adaptable and resilient to the impacts of a changing climate;**
  - 5) adapt to the changing climate by minimising the effects of overheating, mitigating the urban heat island effect, managing flooding, and minimising energy consumption in accordance with the London Plan’s Cooling Hierarchy;**
  - 6) enhance and improve the borough’s green and blue infrastructure to ensure it delivers multi-functional benefits, such as enhancing micro-climates and natural carbon sinks as well as improving air quality;**

- 7) *adopt an integrated approach to water management which considers flood risk, sustainable drainage, water efficiency, water quality and biodiversity;*
  - 8) *reduce water demand and meet best practice water efficiency targets;*
  - 9) *adopt a circular economy approach and minimise embodied carbon;*
  - 10) *ensure that the principles of active and sustainable modes of travel are adopted;*
  - 11) *promote retrofitting of existing buildings, through low-carbon measures;*
  - 12) *promote healthy, sustainable and low carbon lifestyles in line with the Council's Climate Emergency Strategy.*
- C. *To ensure that Richmond is on the right trajectory to achieve its net-zero carbon target, responding to climate change, including sustainable design and construction, must be considered holistically from the start of the design process. Therefore, all development proposals are required to demonstrate how they will comply with all relevant policies on climate change and sustainable design during design, construction and operation of the development.*
- D. *The Council will work with partners and local communities to improve the energy efficiency of the existing building stock and wider public realm, with a particular focus on increasing energy efficiency of homes and businesses, especially improved insulation in lofts, walls and floors. The Council's Carbon Offset Fund will be used to implement projects to reduce carbon emissions across the borough.*

#### **Pre-Publication Draft Local Plan Regulation 18 (January 2022)**

## BASELINE EMISSIONS ASSESSMENT

### Dwellings - Regulated Energy

Sample calculations with respect to the energy consumption and carbon emissions relating to the dwellings have been carried out using the Stroma FSAP 12 Version: 1.0.4.16 computer software, which has been tested by the BRE and is approved by the DCLG.

The primary data input to the calculations is given in the appendices.

**All SAP calculations are based on the following architect's drawings and Accommodation Schedule.**

Architect	Drawing/Document	Description	Revision	Date
Assael	GBT-ASA-ZZ-00-DR-A-0200 GBT-ASA-ZZ-00-DR-A-0201 GBT-ASA-ZZ-00-DR-A-0202 GBT-ASA-ZZ-00-DR-A-0203 GBT-ASA-ZZ-00-DR-A-0204 GBT-ASA-ZZ-00-DR-A-0205	Site Plans – Ground to Roof	-	16/02/22
Assael	GBT-ASA-ZZ-ZZ-DR-A-0450 GBT-ASA-ZZ-ZZ-DR-A-0451 GBT-ASA-ZZ-ZZ-DR-A-0455 GBT-ASA-ZZ-ZZ-DR-A-0454 GBT-ASA-ZZ-ZZ-DR-A-0456 GBT-ASA-ZZ-ZZ-DR-A-0457 GBT-ASA-ZZ-ZZ-DR-A-0458	Industrial site Elevations, Site layouts, sections, and elevations	-	07/02/22
Assael	A2871 Greggs Bakery Site - Industrial Led Scheme WIP Drawing Pack Draft Issue	Details proposed Site layout.	-	07/02/22
Assael	2022-07-13 updated drawing pack and area schedule: GBT-ASA-BB-00-DR-A-0455-R52 GBT-ASA-BB-02-DR-A-0457-R52 GBT-ASA-BB-ZZ-DR-A-0454-R52	Details Updated Site layout. Details Site layouts, sections, and elevations to additional industrial unit.		13/07/2022



## PASSIVE Energy Reductions (Hierarchy Level 1 – Be Lean)

The ethos of this project is to ensure that passive measures are adopted prior to the application of high efficiency or renewable technologies wherever feasible. This approach is in accordance with the London Plan (2021). The measures that have been included in the baseline emissions model are summarised below. All measures are quantified within the BER and DER/BER figures:

- Thermal Insulation;
- Air tightness;
- Maximised daylighting;
- Passive solar gain.

### Building Fabric

The investment in thermal insulation to heated spaces will result in an improvement in heat losses and hence reduction in annual heating fuel consumption. All windows are based on aluminium frames.

#### Minimum Building constructions required to meet Building Regulations Part L 2013:

Building Element	U-Value
External Wall	0.35 W/m <sup>2</sup> K
Roof	0.25 W/m <sup>2</sup> K
Ground Floor	0.25 W/m <sup>2</sup> K
Windows	2.2 W/m <sup>2</sup> K

**Proposed improved Building Constructions to exceed Building Regulations Part L 2013:**

<b>Building Element</b>	<b>U-Value</b>
External Wall	0.15 W/m <sup>2</sup> K
Roof	0.15 W/m <sup>2</sup> K
Ground Floor	0.12 W/m <sup>2</sup> K
Windows	1.3 W/m <sup>2</sup> K G-value 0.4

All party walls are taken as U-value = 0 which requires a fully filled and sealed wall with no cavities. **It is important that the architect's details reflect this.**

**The U-Values proposed above are indicative and are subject to change, due to the limited information available when carrying out the SAP calculations and preparing this report.**

## Infiltration and air tightness

To achieve the required result the buildings should be designed to achieve an air permeability of 3 m<sup>3</sup>/h/m<sup>2</sup> at 50Pa.

## Efficient Energy Delivery (Hierarchy Level 2 – Be Clean)

### Existing District Heating

According to the London Heat Map, unfortunately there are no existing local district heat networks in operation, therefore there is no current opportunity to connect the site to a district heat network. The map is highlighted in appendix A.

### Site based District Heating

The London Plan and London Borough of Richmond strongly encourage district heating. The scale of the development permits a district heating strategy to be considered. Although serving the townhouses and industrial units from a central plant location at the north end of the site, within the central apartment block building, the pipework lengths required to serve all the townhouses and industrial units will be extensive and will lead to high heat losses. Therefore, the proposal is to only serve the apartment blocks with a centralised heating system.

The centralised plant will be made up of air source heat pumps, a dry cooler and a circulated condenser water loop distributed to all the apartments.

Key elements of centralised heating system:

- 2No. 240kW Air Source heat pumps,
- 1No. dry air cooler;
- 3m<sup>3</sup> Buffer vessel;
- Heating Pressurisation Unit and Expansion Vessel;
- Low Loss Header;
- Circulating Pumps;
- Reverse cycle heat pump units in each dwelling with hot water cylinder;
- Control Panels;
- Chemical Dosing Pot;
- Louvres for Natural Ventilation to the Plantroom;
- Ancillary plant;
- Allocation for one set of double doors and separate escape door;
- Capped off connections for future external district heat distribution networks.

Ref: 1823-50-RPT-09

Date: 17<sup>th</sup> March 2023

Revision: 05

The on-site energy centre will be designed to circulate condenser water from the air source heat pumps and or dry air coolers to the apartments. The external plant will operate to maintain the condenser water at temperatures between 15°C - 25°C to serve as a heat sink for the reverse cycle heat pumps in the residential apartments. The centralised air source heat pump will operate when the external ambient temperature is below 15°C or above 25°C, the dry cooler will operate during the mid-band external ambient temperatures.

The tenants will utilise energy from the condenser water via the reverse cycle heat pumps installed in each apartment, energy usage will sub metered at the interface point.

It is envisaged that the landlord or an external metering and billing Company will be responsible for all metering and revenue collection.

From initial plant sizing and planning, the external plant will require a space allocation at roof level of approximately 14mL x 4.5mW x 3.0mH, which has been allowed for on block F. The internal plant area housing the circulation pumps, buffer vessel, pressurisation unit, dosing plant, controls and connections to future district heating networks will be located at ground floor level of the central apartment block.

The mains condenser water pipe work connecting the central heat generation plant to each apartment would be owned and operated by the residential landlord / managing agent.

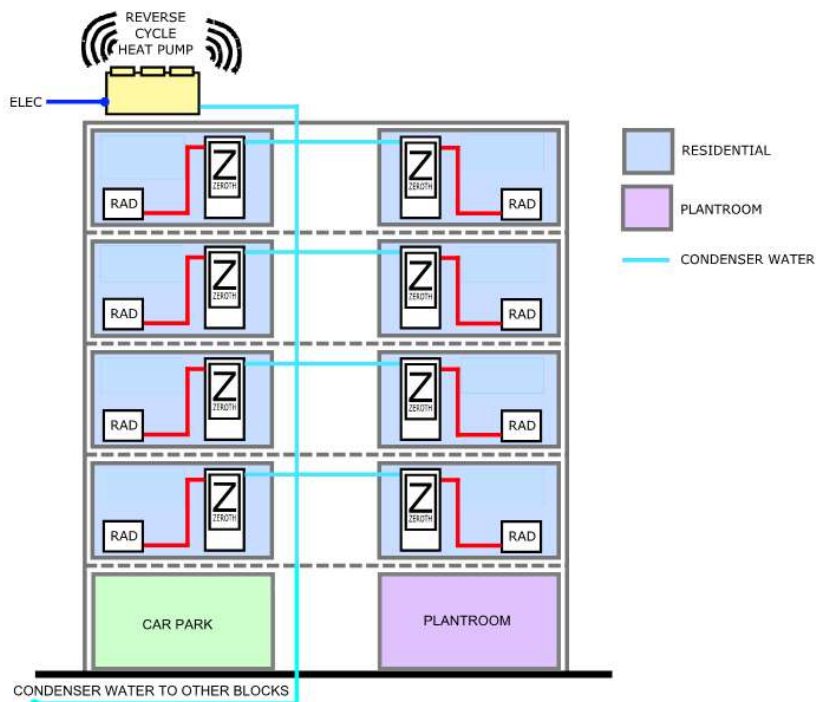


Figure 1 - Flat District Heating Philosophy

### Apartment Internals

The heating system within each apartment will be ostensibly the same as a conventional system. The only obvious difference will be the way in which heat energy is delivered into the apartment. In a conventional system a gas fired boiler generates the heat that is delivered to the radiators and taps through low temperature hot water (LTHW) and domestic hot water (DHW) respectively. Metered gas is piped to the apartment. In the proposed system the boiler is replaced with an electric reverse cycle heat pump, which takes the heat out of the condenser water loop, which is maintained between 15oC and 25oC by the central plant, and further increases the temperature of the water up to 60oC and delivers it to the radiators and taps, via the hot water cylinder. No gas supply is required. Within each apartment the heat pump and hot water cylinder are installed within an internal cupboard.



Figure 2 – A heat pump and hot water cylinder within an apartment utility cupboard

### Overheating Issues

There is a general consensus that site wide district heating can cause problems with overheating and thus energy inefficiencies across the development. Utilising lower water temperatures as proposed for the condenser water loop. The risk of overheating in corridors, caused by heat loss from distribution pipework is eliminated and energy inefficiencies across the development are minimised. The heat pump also has the facility to provide tempered cooling in the dwellings via fan assisted radiators to minimise the risk of overheating.

**Billing Arrangements**

The energy usage by each apartment is monitored by means of a heat meter which may be installed within the heat pump unit or within a meter cupboard located within the common area. This heat meter can be read directly by the managing agent or can be read remotely through either a connection to a data cable network system wired to a central monitoring point or by means of a wireless transmitter (Bluetooth). With the Bluetooth transmitter the meter can be read from outside the apartment by someone with a hand held receiver loaded with dedicated secure monitoring software. The overall cost of providing the heat is then apportioned to the occupiers by the managing agent based upon the heat meter readings.

<b>Centralised Air Sourced heat pumps &amp; individual revers cycle heat pumps.</b>	
<b>Advantages</b>	<b>Disadvantages</b>
Carbon savings are still good with current carbon emission factors for electricity.	Higher site wide electrical consumption could lead to additional substations and infrastructure reinforcement costs.
Carbon savings are predicted to increase when revised carbon factors are incorporated.	More roof space required (if ASHPs are utilised to maintain the condenser loop temperatures).
Renewable Heat Incentive available.	Landlord ASHP Plant can be noisy.
Low impact on air quality.	Large Utility Cupboards
Electricity generated on site.	Increased Maintenance requirements.
Predicted reduction in Landlord's plantroom requirements.	Lower life expectancy for Heat Pumps (10/15 years)
Capital Costs predicted to be lower	Auto de-frost function takes units off line for periods.
Limited distribution losses and negligible risk of overheating in corridors.	Controls need to be carefully considered as the Zeroth unit cannot offer simultaneous heating / cooling / DHW recharge.
Main energy billing to be electricity, therefore tenant can change provider.	Condenser Water pipework is predicted to be larger than district heating pipework due to the lower $\Delta T$ and diversity.
Less metering requirements.	Noise from the unit is currently an unknown. May need a higher spec of doors etc.
Immersion heater will act as a back-up for domestic hot water if the main plant fails.	Radiators would be oversized due to lower water temperatures.
2no. District Condenser Water pipes required rather than the 4no. pipes for options 2A and 2B.	

Table 2 - Advantages and Disadvantages of Air Source heat pumps combined with individual heat pumps.

## Individual air source heat pump systems - Town houses

Air source heat pumps are proposed to be installed to each of the townhouses to provide both heating and tempered cooling, and hot water generation. The indoor unit will connect to fan assisted radiators, which provide sufficient output to offset the heat losses, with lower operating temperatures than traditional radiators. Air source heat pump systems operate most efficiently when coupled with low temperature heating systems. Therefore to maximise coefficients of performance such systems are typically adopted.

Each system can be stand alone and therefore all financial benefits associated with the system efficiencies will be passed on to the building occupier.

Such a system would typically comprise:

- An external air cooled condenser
- A Wall hung or floor mounted unit (internally mounted), commonly called a hydrobox.
- Refrigerant pipework connecting the condenser and hydrobox
- Hot water cylinder fed from the hydrobox, using LTHW pipework, typically installed in copper.
- Fan assisted radiators.
- Local control via a central time clock, and adjustable thermostats in each room.

The outdoor condenser unit shall be installed within an acoustic enclosure, on a raised flat concrete base, to allow condense water to drain away.



Fan assisted radiator



Condenser in an acoustic enclosure



The exact location and size of the ASHP outdoor units is subject to final unit selection and manufacturer however the rear gardens have been identified as the most suitable location.

## Lighting and Metering

In the apartment blocks, lighting within the communal areas will be by means of wall and ceiling mounted compact fluorescent luminaires located within the stair cores and surface and recessed compact fluorescent luminaires within the corridors and foyer. The lighting levels will be designed to the Society of Light and Lighting (SLL) code for lighting. Automatic lighting control will be provided to minimise energy consumption.

System lighting to the all dwellings will be provided by means of a mixture of low energy down lights, low energy ceiling roses and low energy down lights, such that 100% of lighting shall be by low energy fittings.

Each apartment will have individual electricity metering from an appointed meter shipper which will be sited in the main riser cupboards at each block/floor level or in house meter cupboards. The Landlords areas will be separately metered and the cost of the energy used apportioned across the block by service charge.

The townhouses will be individually served with new supplies terminated near to the front elevation of each house, where electricity meter will be installed in line with the local DNO's requirements.

## Mechanical Ventilation with Heat Recovery (MVHR)

All houses and apartments shall have a mechanical ventilation system with heat recovery captures heat energy from the outgoing air extracted from kitchens and bathrooms within the home and warms the fresh air being blown into the home. Heat recovery on the background ventilation further reduces heat loss complementing the improvements in the building fabric. The heat exchanger shall be bypassed during the summer months to ensure that the general background ventilation provided through the MVHR assists in cooling the homes.

Ref: 1823-50-RPT-09

Date: 17<sup>th</sup> March 2023

Revision: 05

## Heating and Cooling – Shell and Core Industrial Units

The shell and core industrial space will be provided with capped off incoming services. The units will be individually served by Daikin Altherma 3 Air Source Heat pumps, feeding radiant panel heaters to provide space heating. Such systems are electrically driven and utilise very good coefficient of performance to minimise running costs and CO2 emissions. The size and nature of the industrial units are well suited to this type of system and it is anticipated that proposed tenants would expect to install such a system as part of their fit out if required.

## Summary

The energy efficient measures that have been included in the baseline emissions model are summarised below.

- Centralised air source heat pumps combined with reverse cycle heat pumps in each of the apartments;
- Individual air source heat pumps serving the townhouses
- High efficiency mechanical ventilation with heat recovery;
- High efficiency lighting;
- Sub-metering to mechanical plant;
- Time-clock and temperature zone control of heating;
- Weather compensated control of heating.

The key efficiency data proposed is:

	Residential
Lighting	High efficiency
Heating seasonal efficiency	0.96
Cooling seasonal efficiency	N/A
Ventilation SFP	0.4
Ventilation heat recovery	91%
HWS efficiency	97% of LTHW

	Industrial
Lighting	High efficiency
Heating seasonal efficiency	3.56
Cooling seasonal efficiency	2.69
Ventilation SFP	1.9
Ventilation heat recovery	86%
HWS efficiency	Same as Space Heating

## LZC Energy Feasibility (Hierarchy Level 3 - Be Green)

LZC Energy Type	Application	Feasibility
<b>Wind Turbine Power</b>	<p>Roof mounted small scale wind turbines for domestic and non domestic buildings.</p> <p>Wind speeds of 7m/s or above required for large scale therefore high level mounting only option.</p>	<p>Visual electromagnetic and environmental noise impact, and public opposition to such, may have negative effect on planning process.</p> <p>Electricity metering for domestic properties and responsibility for maintenance reduce the feasibility for this to be applied to residential.</p> <p>Vibration isolation required for building mounted turbines. Noise may affect natural ventilation feasibility for domestic properties.</p> <p>Wind study required to ensure conditions are correct. Feasibility for large scale not possible due to urban location.</p> <p>Appearance of turbines problematic.</p> <p>Low wind speeds at location increases number of turbines required.</p>
<b>Photovoltaics</b>	<p>PV panels integrated into building fabric, such as cladding, roof surface or brise soleil.</p> <p>Elevations south-east to south-west unshaded.</p>	<p>PV panels can be prone to vandalism in certain locations.</p> <p>Simple systems requiring little maintenance other than cleaning and repair.</p> <p>Individual connection to each dwelling required to permit maximum utilisation and FIT entitlement.</p> <p>Appearance can be unappealing where visible, however tile integrated PVs are less obtrusive.</p> <p>South facing roof space limited.</p>
<b>Ground Source Heating</b>	<p>Can be utilised individual systems with central or individual ground loop operation.</p> <p>Particularly suited to underfloor heating.</p> <p>Can preclude the need for gas distribution to individual properties.</p>	<p>Very costly</p> <p>More suited to individual systems, additional heating can be required to domestic hot water as typical temperatures are only 50°C.</p>
<b>Ground Source Heating</b>		<p>Borehole requirements and ground conditions may reduce the amount that could be implemented.</p> <p>Environment Agency Licence may be required.</p>

LZC Energy Type	Application	Feasibility
<b>River Source Heating</b>	Can be utilised individual systems with central or individual operation.	Available source adjacent to site. Limited volume flow rate in river, therefore limited capacity. Environment Agency Licence would be required. Canal and River Trust licence required.
<b>Air Source Heat Pumps</b>	Particularly suited to water based heating and cooling systems. Particularly suited to underfloor heating or fan assisted radiators. Precludes the need for gas distribution to individual properties.	Roof or external compound space required. Outdoor units can be unsightly and generate background noise. Conventional heating and cooling delivery plant can still be utilised. Medium capital cost. Sufficient power supply required. Good maintenance support.
<b>Solar Hot Water</b>	Roof mounted solar collectors combined with local hot water calorifiers. Gas or electric back up system still required. Solar hot water is not a replacement of such systems.	Roof space availability for solar collectors subject to planning acceptance relating to visual appearance and height. Suitable for domestic and commercial properties. Limited load utilisation – difficult to achieve large saving. Oversized calorifier space required in each flat. Limited south facing roof space.
<b>Biomass Heating</b>	Central boiler installation for whole block. Wood chips used as primary fuel. Provides space heating and domestic hot water for whole site, or could be limited to residential only.	The necessary transportation of wood chips to site and ash from site using road reduces the carbon emission savings available. The proximity of wood chip sources and congested roads adds to the disadvantage. Wood chip and ash storage on site required. Very little space available for this. Back up gas installation required to ensure heat supply in the event of reliability problems or fuel availability problems. Only compatible with centralised systems.

LZC Energy Type	Application	Feasibility
<b>Biomass CHP</b>	<p>CHP – Combined Heat and Power</p> <p>Adopts same principles as Biomass Heating, however part of the central plant will be utilised to provide power generation for the site and distribution back to the national Grid.</p> <p>Applicable to a commercial trigeneration system when used in conjunction with Biomass Fuel.</p>	<p>Feasibility issues as described above remain.</p> <p>CHP reduces the overall site carbon emissions due to very good efficiencies, therefore reducing the overall amount of renewable energy sources required for the site.</p> <p>Constant year round base load required to ensure generated heat is utilised.</p> <p>Does not suit proposed low operating temperatures.</p>
<b>Natural gas CHP</b>	<p>CHP – Combined Heat and Power</p> <p>Heat source for district heating system. Electrical output for landlord use or export.</p>	<p>Requires district heating for full load utilisation and maximisation of diversified heat load.</p> <p>CHP reduces the overall site carbon emissions due to very good efficiencies.</p> <p>No gas to site proposed.</p> <p>Does not suit proposed low operating temperatures.</p>
<b>Natural gas CHP</b>	<p>CHP – Combined Heat and Power</p> <p>Micro CHP to each dwelling</p>	<p>Complex domestic machinery requires intensive maintenance. No external plant space required</p> <p>Low electrical output reduces carbon efficiency compared to centralised CHP.</p> <p>New gas supply through existing building required – impractical.</p>

## Feasibility Matrix

1 = poor

5 = excellent

Site suitability rating doubled to provide weighting

Where site application is less than 6 this option must be ruled out due to impracticalities.

Technology	Cost	Internal Plant Space	Roof space	Suitability of Site Application	Total
<b>Turbines (Tower)</b>	1	4	5	2	<b>12</b>
<b>Turbines (Roof Mounted)</b>	3	4	2	4	<b>13</b>
<b>Photovoltaics</b>	3	5	4	10	<b>22</b>
<b>Solar Hot Water</b>	4	1	1	10	<b>16</b>
<b>Ground Source Heat Pumps</b>	1	2	5	4	<b>12</b>
<b>Air Source Heat Pumps</b>	4	4	2	10	<b>20</b>
<b>Centralised CHP</b>	2	2	5	5	<b>14</b>
<b>Biomass Boiler</b>	2	2	5	5	<b>14</b>
<b>Decentralised CHP</b>	2	2	5	4	<b>13</b>

## Energy Monitoring (Hierarchy Level 4 - Be Seen)

The London Plan introduces a fourth stage to the energy hierarchy; the Be Seen stage, which proposes monitoring and reporting of the actual operational energy performance of major developments for at least five years.

An effectively implemented post-construction monitoring regime can have several benefits including environmental (e.g. reduced grid infrastructure strain, carbon emissions reduction) and socio-economic (e.g. reduced occupants bills and raised awareness around energy use).

The Be Seen stage aims to monitor that the actual energy and carbon performance of buildings is aligned with the estimate figures. This is expected to assist with achieving a zero-carbon London.

Ref: 1823-50-RPT-09

Date: 17<sup>th</sup> March 2023

Revision: 05

Standard monitoring of the Energy Centre and heat network will be undertaken during operation and It is expected that the following will be metered:

- Electricity, and water used in the Energy Centre;
- Heat leaving the Energy Centre;
- Heat entering each block;
- Final customer heat consumption.

The metering and controls strategy will be further developed during the detailed design process.

## ENERGY ASSESSMENT

### Low or Zero carbon Energy Assessment

The incorporation of 2No. 240kW air source heat pumps in combination with the individual reverse cycle heat pumps form the district heating system to serve the 65 apartments. Individual air source heat pump systems will serve the townhouses and will contribute to meeting in excess of the 35% reduction on the building regulations L1 target emissions.

### Renewable Energy Assessment

PV cells will be provided to the townhouses and industrial units contributing to a minimum site wide reduction in carbon dioxide emissions of 35%.

Tile PV panels are specified to provide the required kWh/year output to achieve the energy target for the site.

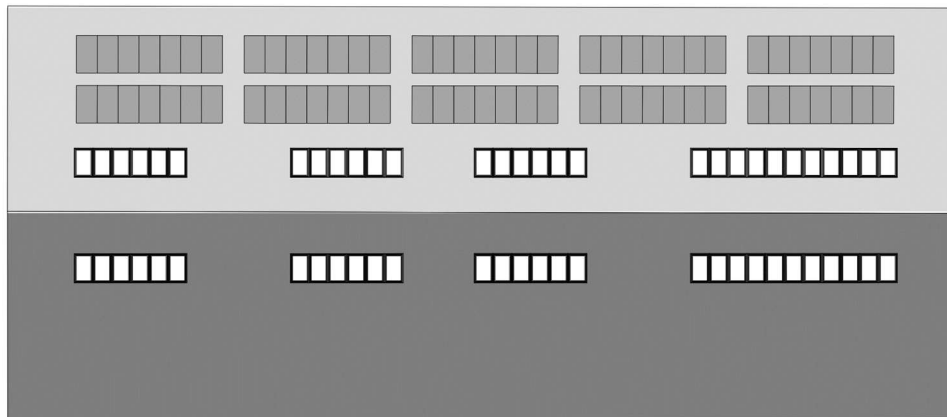




SAP Assessments and PV design has led to the following provision:

Where roof space allows an array of 330W Mono Black panels are proposed on the roofs of all the townhouses, providing 35kW peak in total.

On the industrial units, 70 panels have been assigned, providing 21kW peak in total



### Industrial Units PV Array

## Summary of Emissions

To achieve a minimum 35% reduction over the TER with enhanced fabric U-Values and infiltration rate, Air source heat pumps will cater for the heating and hot water demand across the site. PV's will need to be sized for the townhouses to achieve a peak output of approximately 35kW<sub>e</sub>. The impact on energy savings are highlighted in the table below.

When calculating the site wide carbon emissions, a provision of circa 21kW peak output from PV panels was applied to each industrial units.

**Residential – SAP10**

	Carbon dioxide emissions (Tonnes CO <sub>2</sub> per annum)	
	Regulated	Unregulated
Baseline: Part L 2013 of the Building Regulations Compliant Development	121	-
After energy demand reduction (Be Lean)	103	-
After application of ASHP's (Be Clean)	41	-
After renewable energy (Be Green)	32	-

Table 3b - Carbon Dioxide Emissions after each stage of the Energy Hierarchy

	Regulated carbon dioxide savings	
	(Tonnes CO <sub>2</sub> per annum)	(%)
Savings from energy demand reduction	18	15%
Savings from ASHP's	62	51%
Savings from renewable energy	9	7%
Total Cumulative Savings	90	74%
Annual savings from offset payment	32	
Tonnes of CO <sub>2</sub>		
Cumulative savings for offset payments	954	
Cash in-lieu contributions (£)	90,630	

Table 2b - Regulated carbon dioxide savings from each stage of the Energy Hierarchy

Final dwelling emissions rate incorporates energy efficiency, efficient supply of energy and renewable energy technologies. The following SAP analysis demonstrates RIBA stage 2 status and shall not be the final proposal due to design, buildability and cost considerations.

## Industrial Units

### Non-Domestic – SAP10

	Carbon dioxide emissions (Tonnes CO <sub>2</sub> per annum)	
	Regulated	Unregulated
Baseline: Part L 2013 of the Building Regulations Compliant Development	20	-
After energy demand reduction (Be Lean)	14	-
After application of ASHP's (Be Clean)	12	-
After renewable energy (Be Green)	7	-

Table 3b - Carbon Dioxide Emissions after each stage of the Energy Hierarchy

	Regulated carbon dioxide savings	
	(Tonnes CO <sub>2</sub> per annum)	(%)
Savings from energy demand reduction	5	27%
Savings from ASHP's (Be Lean)	3	14%
Savings from renewable energy (Be Clean)	5	23%
Total Cumulative Savings (Be Green)	13	65%

Table 4b - Regulated carbon dioxide savings from each stage of the Energy Hierarchy

	Annual Shortfall (Tonnes CO <sub>2</sub> )	Cumulative Shortfall (Tonnes CO <sub>2</sub> )
Total Target Savings	7	-
Shortfall	-6	-174
Cash in-lieu contributions (£)	0	-

Table 5b – Shortfall in regulated carbon dioxide savings

## Site Wide Emissions

### SAP10

	Total regulated emissions (Tonnes CO <sub>2</sub> per annum)	CO2 Savings (Tonnes CO <sub>2</sub> per annum)	Percentage Savings (%)
Baseline: Part L 2013 of the Building Regulations Compliant Development	141	-	-
After energy demand reduction (Be Lean)	117	24	17%
After application of ASHP's (Be Clean)	52	65	46%
After renewable energy (Be Green)	39	14	10%
Total Cumulative Savings		103	73%
Off-set – Tonnes of CO <sub>2</sub> over 30 years		779	-

Table 6b - Totalised Regulated carbon dioxide savings from each stage of the Energy Hierarchy

Final dwelling emissions rate incorporates energy efficiency, efficient supply of energy and renewable energy technologies. The SAP analysis demonstrates RIBA stage 2 status and shall not be the final proposal due to design, build ability and cost considerations.

## Cash In lieu Carbon Payment

To meet the zero carbon target for the **site wide development** element of the development a cash in lieu payment can be made, as quoted below:

### **London Plan 2021**

*Boroughs should develop a price for offsetting carbon using either a nationally recognised carbon pricing mechanism or a price based on the cost of offsetting carbon across the borough. A nationally recognised non-traded price of £95/tonne has been tested as part of the viability assessment for the London Plan which boroughs may use to collect offset payments.*

London Borough of Richmond recognise £95/tonne carbon offset payment.

Based upon the planning stage energy strategy calculations a carbon dioxide shortfall of 788 tonnes over 30 years is estimated (see Carbon Emissions table above), and this will therefore result in a carbon offsetting cash payment in the order of **£74,860**.

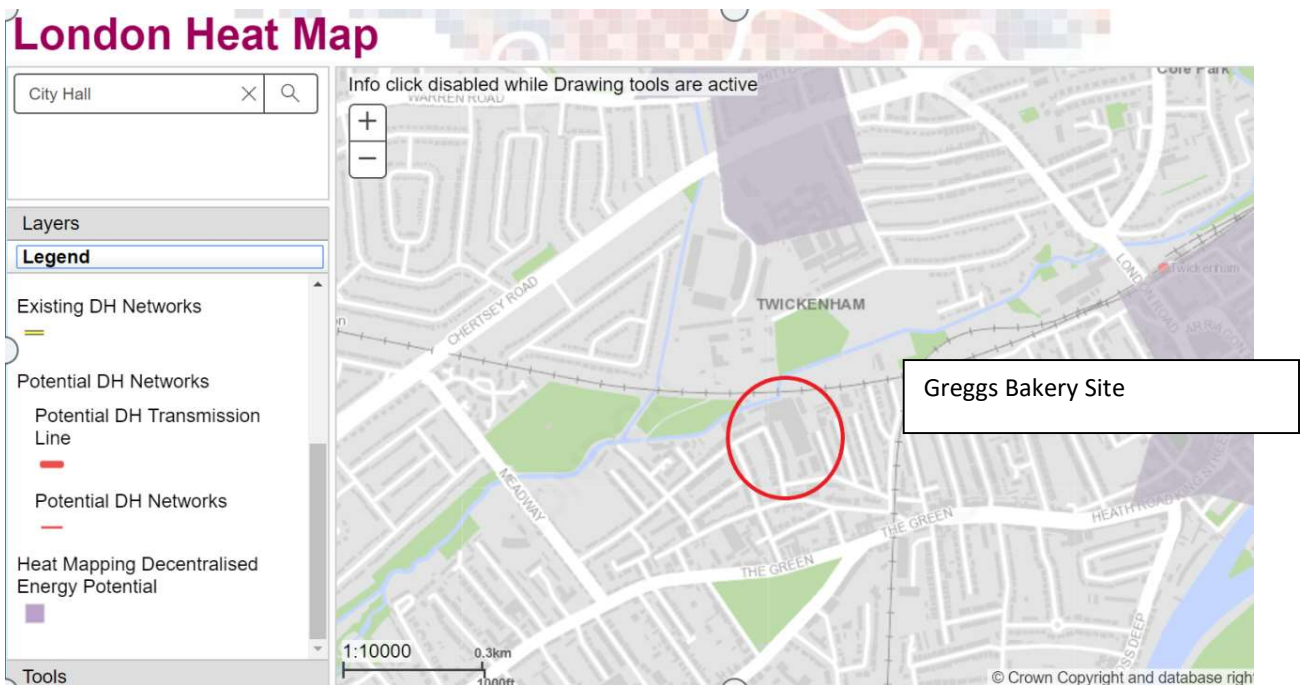
The above calculations are based on pre planning stage 2 apartment layouts and are therefore estimates. Figures will need to be refined as the design progresses and when final design stage SAP calculations are submitted during RIBA design stage 4.

## Appendix A – Local heat networks

The extract below shows the current heat map for the surrounding area as accessed from <https://maps.london.gov.uk/heatmap/>

The grey shaded areas shows identified decentralised heat potential.

There are currently no local heat networks within the area surrounding the site.



## Appendix B – SAP Analysis

Block A – Be Lean

Block	Floor	Dwelling Type	Area m <sup>2</sup>	Roof U-value W/m <sup>2</sup> K	Wall U-value W/m <sup>2</sup> K	Floor U-value W/m <sup>2</sup> K	Window U-value W/m <sup>2</sup> K	Thermal Bridging	APR	Primary Heating	Ventilation	Lighting	kgCO <sub>2</sub> /m <sup>2</sup> /yr			kgCO <sub>2</sub> /yr		kWh/year	
													TER	DER	% imp	TER	DER	TFEE	DFEE
A	Ground	Apartment	50.0	0.15	0.15	0.12	1.30	Approved	3	Gas Fired combination Boiler	MVHR System	All Low Energy	18.4	16.0	13.0%	922	802	51.0	42.8
A	Ground	Apartment	61.0	0.15	0.15	0.12	1.30	Approved	3	Gas Fired combination Boiler	MVHR System	All Low Energy	18.4	16.0	13.0%	1124	978	51.0	42.8
A	First	Apartment	57.0	0.15	0.15	0.12	1.30	Approved	3	Gas Fired combination Boiler	MVHR System	All Low Energy	19.1	17.0	11.2%	1091	969	54.6	46.9
A	First	Apartment	72.0	0.15	0.15	0.12	1.30	Approved	3	Gas Fired combination Boiler	MVHR System	All Low Energy	19.1	17.0	11.2%	1378	1224	54.6	46.9
A	Second	Apartment	57.0	0.15	0.15	0.12	1.30	Approved	3	Gas Fired combination Boiler	MVHR System	All Low Energy	19.1	17.0	11.2%	1091	969	54.6	46.9
A	Second	Apartment	72.0	0.15	0.15	0.12	1.30	Approved	3	Gas Fired combination Boiler	MVHR System	All Low Energy	19.1	17.0	11.2%	1378	1224	54.6	46.9

Block D – Be Lean

Block	Floor	Dwelling Type	Area m <sup>2</sup>	Roof U-value W/m <sup>2</sup> K	Wall U-value W/m <sup>2</sup> K	Floor U-value W/m <sup>2</sup> K	Window U-value W/m <sup>2</sup> K	Thermal Bridging	APR	Primary Heating	Ventilation	Lighting	kgCO <sub>2</sub> /m <sup>2</sup> /yr			kgCO <sub>2</sub> /yr		kWh/year	
													TER	DER	% imp	TER	DER	TFEE	DFEE
D	Townhouse	Townhouse	125.0	0.15	0.15	0.12	1.30	Approved	3	Gas Fired System Boiler	MVHR System	All Low Energy	16.4	14.9	9.1%	2054	1868	56.8	48.9
D	Townhouse	Townhouse	125.0	0.15	0.15	0.12	1.30	Approved	3	Gas Fired System Boiler	MVHR System	All Low Energy	16.4	14.9	9.1%	2054	1868	56.8	48.9
D	Townhouse	Townhouse	125.0	0.15	0.15	0.12	1.30	Approved	3	Gas Fired System Boiler	MVHR System	All Low Energy	16.4	14.9	9.1%	2054	1868	56.8	48.9
D	Townhouse	Townhouse	125.0	0.15	0.15	0.12	1.30	Approved	3	Gas Fired System Boiler	MVHR System	All Low Energy	16.4	14.9	9.1%	2054	1868	56.8	48.9
D	Townhouse	Townhouse	127.0	0.15	0.15	0.12	1.30	Approved	3	Gas Fired System Boiler	MVHR System	All Low Energy	16.4	14.9	9.1%	2087	1897	56.8	48.9
D	Townhouse	Townhouse	127.0	0.15	0.15	0.12	1.30	Approved	3	Gas Fired System Boiler	MVHR System	All Low Energy	16.4	14.9	9.1%	2087	1897	56.8	48.9
D	Townhouse	Townhouse	127.0	0.15	0.15	0.12	1.30	Approved	3	Gas Fired System Boiler	MVHR System	All Low Energy	16.4	14.9	9.1%	2087	1897	56.8	48.9
D	Townhouse	Townhouse	127.0	0.15	0.15	0.12	1.30	Approved	3	Gas Fired System Boiler	MVHR System	All Low Energy	16.4	14.9	9.1%	2087	1897	56.8	48.9
D	Townhouse	Townhouse	127.0	0.15	0.15	0.12	1.30	Approved	3	Gas Fired System Boiler	MVHR System	All Low Energy	16.4	14.9	9.1%	2087	1897	56.8	48.9
D	Townhouse	Townhouse	127.0	0.15	0.15	0.12	1.30	Approved	3	Gas Fired System Boiler	MVHR System	All Low Energy	16.4	14.9	9.1%	2087	1897	56.8	48.9
D	Townhouse	Townhouse	127.0	0.15	0.15	0.12	1.30	Approved	3	Gas Fired System Boiler	MVHR System	All Low Energy	16.4	14.9	9.1%	2087	1897	56.8	48.9
D	Townhouse	Townhouse	127.0	0.15	0.15	0.12	1.30	Approved	3	Gas Fired System Boiler	MVHR System	All Low Energy	16.4	14.9	9.1%	2087	1897	56.8	48.9
D	Townhouse	Townhouse	127.0	0.15	0.15	0.12	1.30	Approved	3	Gas Fired System Boiler	MVHR System	All Low Energy	16.4	14.9	9.1%	2087	1897	56.8	48.9
D	Townhouse	Townhouse	127.0	0.15	0.15	0.12	1.30	Approved	3	Gas Fired System Boiler	MVHR System	All Low Energy	16.4	14.9	9.1%	2087	1897	56.8	48.9
D	Townhouse	Townhouse	127.0	0.15	0.15	0.12	1.30	Approved	3	Gas Fired System Boiler	MVHR System	All Low Energy	16.4	14.9	9.1%	2087	1897	56.8	48.9
D	Townhouse	Townhouse	127.0	0.15	0.15	0.12	1.30	Approved	3	Gas Fired System Boiler	MVHR System	All Low Energy	16.4	14.9	9.1%	2087	1897	56.8	48.9

Ref: 1823-50-RPT-09

Date: 17<sup>th</sup> March 2023

Revision: 05



Block C - Be Lean

Block	Floor	Dwelling Type	Area m <sup>2</sup>	Roof U-value W/m <sup>2</sup> K	Wall U-value W/m <sup>2</sup> K	Floor U-value W/m <sup>2</sup> K	Window U-value W/m <sup>2</sup> K	Thermal Bridging	APR	Primary Heating	Ventilation	Lighting	kgCO <sub>2</sub> /m <sup>2</sup> /yr			kgCO <sub>2</sub> /yr		kWh/year	
													TER	DER	% imp	TER	DER	TFEE	DFEE
C	Townhouse	Townhouse	110.0	0.15	0.15	0.12	1.30	Approved	3	Gas Fired System Boiler	MVHR System	All Low Energy	16.4	14.9	9.1%	1807	1643	56.8	48.9
C	Townhouse	Townhouse	108.0	0.15	0.15	0.12	1.30	Approved	3	Gas Fired System Boiler	MVHR System	All Low Energy	16.4	14.9	9.1%	1774	1614	56.8	48.9
C	Townhouse	Townhouse	108.0	0.15	0.15	0.12	1.30	Approved	3	Gas Fired System Boiler	MVHR System	All Low Energy	16.4	14.9	9.1%	1774	1614	56.8	48.9
C	Townhouse	Townhouse	108.0	0.15	0.15	0.12	1.30	Approved	3	Gas Fired System Boiler	MVHR System	All Low Energy	16.4	14.9	9.1%	1774	1614	56.8	48.9
C	Townhouse	Townhouse	112.0	0.15	0.15	0.12	1.30	Approved	3	Gas Fired System Boiler	MVHR System	All Low Energy	16.4	14.9	9.1%	1840	1673	56.8	48.9
C	Townhouse	Townhouse	112.0	0.15	0.15	0.12	1.30	Approved	3	Gas Fired System Boiler	MVHR System	All Low Energy	16.4	14.9	9.1%	1840	1673	56.8	48.9
C	Townhouse	Townhouse	112.0	0.15	0.15	0.12	1.30	Approved	3	Gas Fired System Boiler	MVHR System	All Low Energy	16.4	14.9	9.1%	1840	1673	56.8	48.9
C	Townhouse	Townhouse	112.0	0.15	0.15	0.12	1.30	Approved	3	Gas Fired System Boiler	MVHR System	All Low Energy	16.4	14.9	9.1%	1840	1673	56.8	48.9
C	Townhouse	Townhouse	133.0	0.15	0.15	0.12	1.30	Approved	3	Gas Fired System Boiler	MVHR System	All Low Energy	16.4	14.9	9.1%	2185	1987	56.8	48.9
C	Townhouse	Townhouse	133.0	0.15	0.15	0.12	1.30	Approved	3	Gas Fired System Boiler	MVHR System	All Low Energy	16.4	14.9	9.1%	2185	1987	56.8	48.9
C	Townhouse	Townhouse	112.0	0.15	0.15	0.12	1.30	Approved	3	Gas Fired System Boiler	MVHR System	All Low Energy	16.4	14.9	9.1%	1840	1673	56.8	48.9
C	Townhouse	Townhouse	112.0	0.15	0.15	0.12	1.30	Approved	3	Gas Fired System Boiler	MVHR System	All Low Energy	16.4	14.9	9.1%	1840	1673	56.8	48.9
C	Townhouse	Townhouse	112.0	0.15	0.15	0.12	1.30	Approved	3	Gas Fired System Boiler	MVHR System	All Low Energy	16.4	14.9	9.1%	1840	1673	56.8	48.9
C	Townhouse	Townhouse	112.0	0.15	0.15	0.12	1.30	Approved	3	Gas Fired System Boiler	MVHR System	All Low Energy	16.4	14.9	9.1%	1840	1673	56.8	48.9
C	Townhouse	Townhouse	133.0	0.15	0.15	0.12	1.30	Approved	3	Gas Fired System Boiler	MVHR System	All Low Energy	16.4	14.9	9.1%	2185	1987	56.8	48.9
C	Townhouse	Townhouse	133.0	0.15	0.15	0.12	1.30	Approved	3	Gas Fired System Boiler	MVHR System	All Low Energy	16.4	14.9	9.1%	2185	1987	56.8	48.9
C	Townhouse	Townhouse	112.0	0.15	0.15	0.12	1.30	Approved	3	Gas Fired System Boiler	MVHR System	All Low Energy	16.4	14.9	9.1%	1840	1673	56.8	48.9
C	Townhouse	Townhouse	112.0	0.15	0.15	0.12	1.30	Approved	3	Gas Fired System Boiler	MVHR System	All Low Energy	16.4	14.9	9.1%	1840	1673	56.8	48.9
C	Townhouse	Townhouse	112.0	0.15	0.15	0.12	1.30	Approved	3	Gas Fired System Boiler	MVHR System	All Low Energy	16.4	14.9	9.1%	1840	1673	56.8	48.9
C	Townhouse	Townhouse	112.0	0.15	0.15	0.12	1.30	Approved	3	Gas Fired System Boiler	MVHR System	All Low Energy	16.4	14.9	9.1%	1840	1673	56.8	48.9
C	Townhouse	Townhouse	112.0	0.15	0.15	0.12	1.30	Approved	3	Gas Fired System Boiler	MVHR System	All Low Energy	16.4	14.9	9.1%	1840	1673	56.8	48.9
C	Townhouse	Townhouse	112.0	0.15	0.15	0.12	1.30	Approved	3	Gas Fired System Boiler	MVHR System	All Low Energy	16.4	14.9	9.1%	1840	1673	56.8	48.9
C	Townhouse	Townhouse	112.0	0.15	0.15	0.12	1.30	Approved	3	Gas Fired System Boiler	MVHR System	All Low Energy	16.4	14.9	9.1%	1840	1673	56.8	48.9
C	Townhouse	Townhouse	112.0	0.15	0.15	0.12	1.30	Approved	3	Gas Fired System Boiler	MVHR System	All Low Energy	16.4	14.9	9.1%	1840	1673	56.8	48.9
C	Townhouse	Townhouse	112.0	0.15	0.15	0.12	1.30	Approved	3	Gas Fired System Boiler	MVHR System	All Low Energy	16.4	14.9	9.1%	1840	1673	56.8	48.9
C	Townhouse	Townhouse	112.0	0.15	0.15	0.12	1.30	Approved	3	Gas Fired System Boiler	MVHR System	All Low Energy	16.4	14.9	9.1%	1840	1673	56.8	48.9
C	Townhouse	Townhouse	112.0	0.15	0.15	0.12	1.30	Approved	3	Gas Fired System Boiler	MVHR System	All Low Energy	16.4	14.9	9.1%	1840	1673	56.8	48.9
C	Townhouse	Townhouse	112.0	0.15	0.15	0.12	1.30	Approved	3	Gas Fired System Boiler	MVHR System	All Low Energy	16.4	14.9	9.1%	1840	1673	56.8	48.9
C	Townhouse	Townhouse	112.0	0.15	0.15	0.12	1.30	Approved	3	Gas Fired System Boiler	MVHR System	All Low Energy	16.4	14.9	9.1%	1840	1673	56.8	48.9

Ref: 1823-50-RPT-09

Date: 17<sup>th</sup> March 2023

Revision: 05

Block E - Be Lean

Block	Floor	Dwelling Type	Area m <sup>2</sup>	Roof U-value W/m <sup>2</sup> K	Wall U-value W/m <sup>2</sup> K	Floor U-value W/m <sup>2</sup> K	Window U-value W/m <sup>2</sup> K	Thermal Bridging	APR	Primary Heating	Ventilation	Lighting	kgCO <sub>2</sub> /m <sup>2</sup> /yr			kgCO <sub>2</sub> /yr		kWh/year	
													TER	DER	% imp	TER	DER	TFEE	DFEE
E	Ground	Apartment	55.0	0.15	0.15	0.12	1.30	Approved	3	Gas Fired combination Boiler	MVHR System	All Low Energy	18.4	16.0	13.0%	1014	882	51.0	42.8
E	Ground	Apartment	55.0	0.15	0.15	0.12	1.30	Approved	3	Gas Fired combination Boiler	MVHR System	All Low Energy	18.4	16.0	13.0%	1014	882	51.0	42.8
E	First	Apartment	70.0	0.15	0.15	0.12	1.30	Approved	3	Gas Fired combination Boiler	MVHR System	All Low Energy	19.1	17.0	11.2%	1340	1190	54.6	46.9
E	First	Apartment	70.0	0.15	0.15	0.12	1.30	Approved	3	Gas Fired combination Boiler	MVHR System	All Low Energy	19.1	17.0	11.2%	1340	1190	54.6	46.9
E	Second	Apartment	70.0	0.15	0.15	0.12	1.30	Approved	3	Gas Fired combination Boiler	MVHR System	All Low Energy	19.1	17.0	11.2%	1340	1190	54.6	46.9
E	Second	Apartment	70.0	0.15	0.15	0.12	1.30	Approved	3	Gas Fired combination Boiler	MVHR System	All Low Energy	19.1	17.0	11.2%	1340	1190	54.6	46.9

Block G – Be Lean

Block	Floor	Dwelling Type	Area m <sup>2</sup>	Roof U-value W/m <sup>2</sup> K	Wall U-value W/m <sup>2</sup> K	Floor U-value W/m <sup>2</sup> K	Window U-value W/m <sup>2</sup> K	Thermal Bridging	APR	Primary Heating	Ventilation	Lighting	kgCO <sub>2</sub> /m <sup>2</sup> /yr			kgCO <sub>2</sub> /yr		kWh/year	
													TER	DER	% imp	TER	DER	TFEE	DFEE
G	Townhouse	Townhouse	79.0	0.15	0.15	0.12	1.30	Approved	3	Gas Fired System Boiler	MVHR System	All Low Energy	16.4	14.9	9.1%	1298	1180	56.8	48.9
G	Townhouse	Townhouse	79.0	0.15	0.15	0.12	1.30	Approved	3	Gas Fired System Boiler	MVHR System	All Low Energy	16.4	14.9	9.1%	1298	1180	56.8	48.9
G	Townhouse	Townhouse	79.0	0.15	0.15	0.12	1.30	Approved	3	Gas Fired System Boiler	MVHR System	All Low Energy	16.4	14.9	9.1%	1298	1180	56.8	48.9
G	Townhouse	Townhouse	79.0	0.15	0.15	0.12	1.30	Approved	3	Gas Fired System Boiler	MVHR System	All Low Energy	16.4	14.9	9.1%	1298	1180	56.8	48.9

Block H – Be Lean

Block	Floor	Dwelling Type	Area m <sup>2</sup>	Roof U-value W/m <sup>2</sup> K	Wall U-value W/m <sup>2</sup> K	Floor U-value W/m <sup>2</sup> K	Window U-value W/m <sup>2</sup> K	Thermal Bridging	APR	Primary Heating	Ventilation	Lighting	kgCO <sub>2</sub> /m <sup>2</sup> /yr			kgCO <sub>2</sub> /yr		kWh/year	
													TER	DER	% imp	TER	DER	TFEE	DFEE
H	Townhouse	Townhouse	84.0	0.15	0.15	0.12	1.30	Approved	3	Gas Fired System Boiler	MVHR System	All Low Energy	16.4	14.9	9.1%	1380	1255	56.8	48.9

Ref: 1823-50-RPT-09

Date: 17<sup>th</sup> March 2023

Revision: 05



Block A – Be Clean

Block	Floor	Dwelling Type	Area m <sup>2</sup>	Roof U-value W/m <sup>2</sup> K	Wall U-value W/m <sup>2</sup> K	Floor U-value W/m <sup>2</sup> K	Window U-value W/m <sup>2</sup> K	Thermal Bridging	APR	Primary Heating	Secondary Heating	Ventilation	Lighting	kgCO <sub>2</sub> /m <sup>2</sup> /yr			kgCO <sub>2</sub> /yr	
														TER	DER	% Imp	TER	DER
A	Ground	Apartment	50.0	0.15	0.15	0.12	1.30	Approved	3	Air source heat pump	Reverse cycle heat pumps	MVHR System	All Low Energy	18.4	11.0	40.4%	922	550
A	Ground	Apartment	61.0	0.15	0.15	0.12	1.30	Approved	3	Air source heat pump	Reverse cycle heat pumps	MVHR System	All Low Energy	18.4	11.0	40.4%	1124	670
A	First	Apartment	57.0	0.15	0.15	0.12	1.30	Approved	3	Air source heat pump	Reverse cycle heat pumps	MVHR System	All Low Energy	19.1	11.9	38.0%	1091	676
A	First	Apartment	72.0	0.15	0.15	0.12	1.30	Approved	3	Air source heat pump	Reverse cycle heat pumps	MVHR System	All Low Energy	19.1	11.9	38.0%	1378	854
A	Second	Apartment	57.0	0.15	0.15	0.12	1.30	Approved	3	Air source heat pump	Reverse cycle heat pumps	MVHR System	All Low Energy	19.1	11.9	38.0%	1091	676
A	Second	Apartment	72.0	0.15	0.15	0.12	1.30	Approved	3	Air source heat pump	Reverse cycle heat pumps	MVHR System	All Low Energy	19.1	11.9	38.0%	1378	854

Block D – Be Clean

Block	Floor	Dwelling Type	Area m <sup>2</sup>	Roof U-value W/m <sup>2</sup> K	Wall U-value W/m <sup>2</sup> K	Floor U-value W/m <sup>2</sup> K	Window U-value W/m <sup>2</sup> K	Thermal Bridging	APR	Primary Heating	Secondary Heating	Ventilation	Lighting	kgCO <sub>2</sub> /m <sup>2</sup> /yr			kgCO <sub>2</sub> /yr	
														TER	DER	% Imp	TER	DER
D	Townhouse	Townhouse	125.0	0.15	0.15	0.12	1.30	Approved	3	Air source heat pump (split)	None	MVHR System	All Low Energy	16.4	12.3	24.9%	2054	1543
D	Townhouse	Townhouse	125.0	0.15	0.15	0.12	1.30	Approved	3	Air source heat pump (split)	None	MVHR System	All Low Energy	16.4	12.3	24.9%	2054	1543
D	Townhouse	Townhouse	125.0	0.15	0.15	0.12	1.30	Approved	3	Air source heat pump (split)	None	MVHR System	All Low Energy	16.4	12.3	24.9%	2054	1543
D	Townhouse	Townhouse	125.0	0.15	0.15	0.12	1.30	Approved	3	Air source heat pump (split)	None	MVHR System	All Low Energy	16.4	12.3	24.9%	2054	1543
D	Townhouse	Townhouse	127.0	0.15	0.15	0.12	1.30	Approved	3	Air source heat pump (split)	None	MVHR System	All Low Energy	16.4	12.3	24.9%	2087	1567
D	Townhouse	Townhouse	127.0	0.15	0.15	0.12	1.30	Approved	3	Air source heat pump (split)	None	MVHR System	All Low Energy	16.4	12.3	24.9%	2087	1567
D	Townhouse	Townhouse	127.0	0.15	0.15	0.12	1.30	Approved	3	Air source heat pump (split)	None	MVHR System	All Low Energy	16.4	12.3	24.9%	2087	1567
D	Townhouse	Townhouse	127.0	0.15	0.15	0.12	1.30	Approved	3	Air source heat pump (split)	None	MVHR System	All Low Energy	16.4	12.3	24.9%	2087	1567
D	Townhouse	Townhouse	127.0	0.15	0.15	0.12	1.30	Approved	3	Air source heat pump (split)	None	MVHR System	All Low Energy	16.4	12.3	24.9%	2087	1567
D	Townhouse	Townhouse	127.0	0.15	0.15	0.12	1.30	Approved	3	Air source heat pump (split)	None	MVHR System	All Low Energy	16.4	12.3	24.9%	2087	1567
D	Townhouse	Townhouse	127.0	0.15	0.15	0.12	1.30	Approved	3	Air source heat pump (split)	None	MVHR System	All Low Energy	16.4	12.3	24.9%	2087	1567
D	Townhouse	Townhouse	127.0	0.15	0.15	0.12	1.30	Approved	3	Air source heat pump (split)	None	MVHR System	All Low Energy	16.4	12.3	24.9%	2087	1567
D	Townhouse	Townhouse	127.0	0.15	0.15	0.12	1.30	Approved	3	Air source heat pump (split)	None	MVHR System	All Low Energy	16.4	12.3	24.9%	2087	1567
D	Townhouse	Townhouse	127.0	0.15	0.15	0.12	1.30	Approved	3	Air source heat pump (split)	None	MVHR System	All Low Energy	16.4	12.3	24.9%	2087	1567

Ref: 1823-50-RPT-09

Date: 17<sup>th</sup> March 2023

Revision: 05

Block C - Be Clean

Block	Floor	Dwelling Type	Area m <sup>2</sup>	Roof U-value W/m <sup>2</sup> K	Wall U-value W/m <sup>2</sup> K	Floor U-value W/m <sup>2</sup> K	Window U-value W/m <sup>2</sup> K	Thermal Bridging	APR	Primary Heating	Secondary Heating	Ventilation	Lighting	kgCO <sub>2</sub> /m <sup>2</sup> /yr			kgCO <sub>2</sub> /yr	
														TER	DER	% imp	TER	DER
C	Townhouse	Townhouse	110.0	0.15	0.15	0.12	1.30	Approved	3	Air source heat pump (split)	None	MVHR System	All Low Energy	16.4	12.3	24.9%	1807	1357
C	Townhouse	Townhouse	108.0	0.15	0.15	0.12	1.30	Approved	3	Air source heat pump (split)	None	MVHR System	All Low Energy	16.4	12.3	24.9%	1774	1333
C	Townhouse	Townhouse	108.0	0.15	0.15	0.12	1.30	Approved	3	Air source heat pump (split)	None	MVHR System	All Low Energy	16.4	12.3	24.9%	1774	1333
C	Townhouse	Townhouse	108.0	0.15	0.15	0.12	1.30	Approved	3	Air source heat pump (split)	None	MVHR System	All Low Energy	16.4	12.3	24.9%	1774	1333
C	Townhouse	Townhouse	112.0	0.15	0.15	0.12	1.30	Approved	3	Air source heat pump (split)	None	MVHR System	All Low Energy	16.4	12.3	24.9%	1840	1382
C	Townhouse	Townhouse	112.0	0.15	0.15	0.12	1.30	Approved	3	Air source heat pump (split)	None	MVHR System	All Low Energy	16.4	12.3	24.9%	1840	1382
C	Townhouse	Townhouse	112.0	0.15	0.15	0.12	1.30	Approved	3	Air source heat pump (split)	None	MVHR System	All Low Energy	16.4	12.3	24.9%	1840	1382
C	Townhouse	Townhouse	112.0	0.15	0.15	0.12	1.30	Approved	3	Air source heat pump (split)	None	MVHR System	All Low Energy	16.4	12.3	24.9%	1840	1382
C	Townhouse	Townhouse	133.0	0.15	0.15	0.12	1.30	Approved	3	Air source heat pump (split)	None	MVHR System	All Low Energy	16.4	12.3	24.9%	2185	1641
C	Townhouse	Townhouse	133.0	0.15	0.15	0.12	1.30	Approved	3	Air source heat pump (split)	None	MVHR System	All Low Energy	16.4	12.3	24.9%	2185	1641
C	Townhouse	Townhouse	112.0	0.15	0.15	0.12	1.30	Approved	3	Air source heat pump (split)	None	MVHR System	All Low Energy	16.4	12.3	24.9%	1840	1382
C	Townhouse	Townhouse	112.0	0.15	0.15	0.12	1.30	Approved	3	Air source heat pump (split)	None	MVHR System	All Low Energy	16.4	12.3	24.9%	1840	1382
C	Townhouse	Townhouse	112.0	0.15	0.15	0.12	1.30	Approved	3	Air source heat pump (split)	None	MVHR System	All Low Energy	16.4	12.3	24.9%	1840	1382
C	Townhouse	Townhouse	133.0	0.15	0.15	0.12	1.30	Approved	3	Air source heat pump (split)	None	MVHR System	All Low Energy	16.4	12.3	24.9%	2185	1641
C	Townhouse	Townhouse	133.0	0.15	0.15	0.12	1.30	Approved	3	Air source heat pump (split)	None	MVHR System	All Low Energy	16.4	12.3	24.9%	2185	1641
C	Townhouse	Townhouse	112.0	0.15	0.15	0.12	1.30	Approved	3	Air source heat pump (split)	None	MVHR System	All Low Energy	16.4	12.3	24.9%	1840	1382
C	Townhouse	Townhouse	112.0	0.15	0.15	0.12	1.30	Approved	3	Air source heat pump (split)	None	MVHR System	All Low Energy	16.4	12.3	24.9%	1840	1382
C	Townhouse	Townhouse	112.0	0.15	0.15	0.12	1.30	Approved	3	Air source heat pump (split)	None	MVHR System	All Low Energy	16.4	12.3	24.9%	1840	1382
C	Townhouse	Townhouse	112.0	0.15	0.15	0.12	1.30	Approved	3	Air source heat pump (split)	None	MVHR System	All Low Energy	16.4	12.3	24.9%	1840	1382
C	Townhouse	Townhouse	112.0	0.15	0.15	0.12	1.30	Approved	3	Air source heat pump (split)	None	MVHR System	All Low Energy	16.4	12.3	24.9%	1840	1382
C	Townhouse	Townhouse	112.0	0.15	0.15	0.12	1.30	Approved	3	Air source heat pump (split)	None	MVHR System	All Low Energy	16.4	12.3	24.9%	1840	1382
C	Townhouse	Townhouse	112.0	0.15	0.15	0.12	1.30	Approved	3	Air source heat pump (split)	None	MVHR System	All Low Energy	16.4	12.3	24.9%	1840	1382
C	Townhouse	Townhouse	133.0	0.15	0.15	0.12	1.30	Approved	3	Air source heat pump (split)	None	MVHR System	All Low Energy	16.4	12.3	24.9%	2185	1641
C	Townhouse	Townhouse	133.0	0.15	0.15	0.12	1.30	Approved	3	Air source heat pump (split)	None	MVHR System	All Low Energy	16.4	12.3	24.9%	2185	1641
C	Townhouse	Townhouse	112.0	0.15	0.15	0.12	1.30	Approved	3	Air source heat pump (split)	None	MVHR System	All Low Energy	16.4	12.3	24.9%	1840	1382
C	Townhouse	Townhouse	112.0	0.15	0.15	0.12	1.30	Approved	3	Air source heat pump (split)	None	MVHR System	All Low Energy	16.4	12.3	24.9%	1840	1382
C	Townhouse	Townhouse	112.0	0.15	0.15	0.12	1.30	Approved	3	Air source heat pump (split)	None	MVHR System	All Low Energy	16.4	12.3	24.9%	1840	1382
C	Townhouse	Townhouse	112.0	0.15	0.15	0.12	1.30	Approved	3	Air source heat pump (split)	None	MVHR System	All Low Energy	16.4	12.3	24.9%	1840	1382
C	Townhouse	Townhouse	112.0	0.15	0.15	0.12	1.30	Approved	3	Air source heat pump (split)	None	MVHR System	All Low Energy	16.4	12.3	24.9%	1840	1382
C	Townhouse	Townhouse	112.0	0.15	0.15	0.12	1.30	Approved	3	Air source heat pump (split)	None	MVHR System	All Low Energy	16.4	12.3	24.9%	1840	1382
C	Townhouse	Townhouse	112.0	0.15	0.15	0.12	1.30	Approved	3	Air source heat pump (split)	None	MVHR System	All Low Energy	16.4	12.3	24.9%	1840	1382
C	Townhouse	Townhouse	112.0	0.15	0.15	0.12	1.30	Approved	3	Air source heat pump (split)	None	MVHR System	All Low Energy	16.4	12.3	24.9%	1840	1382

Ref: 1823-50-RPT-09

Date: 17<sup>th</sup> March 2023

Revision: 05

Block E - Be Clean

Block	Floor	Dwelling Type	Area m <sup>2</sup>	Roof U-value W/m <sup>2</sup> K	Wall U-value W/m <sup>2</sup> K	Floor U-Value W/m <sup>2</sup> K	Window U-Value W/m <sup>2</sup> K	Thermal Bridging	APR	Primary Heating	Secondary Heating	Ventilation	Lighting	kgCO <sub>2</sub> /m <sup>2</sup> /yr			kgCO <sub>2</sub> /yr	
														TER	DER	% Imp	TER	DER
E	Ground	Apartment	55.0	0.15	0.15	0.12	1.30	Approved	3	Air source heat pump	Reverse cycle heat pumps	MVHR System	All Low Energy	18.4	11.0	40.4%	1014	604
E	Ground	Apartment	55.0	0.15	0.15	0.12	1.30	Approved	3	Air source heat pump	Reverse cycle heat pumps	MVHR System	All Low Energy	18.4	11.0	40.4%	1014	604
E	First	Apartment	70.0	0.15	0.15	0.12	1.30	Approved	3	Air source heat pump	Reverse cycle heat pumps	MVHR System	All Low Energy	19.1	11.9	38.0%	1340	830
E	First	Apartment	70.0	0.15	0.15	0.12	1.30	Approved	3	Air source heat pump	Reverse cycle heat pumps	MVHR System	All Low Energy	19.1	11.9	38.0%	1340	830
E	Second	Apartment	70.0	0.15	0.15	0.12	1.30	Approved	3	Air source heat pump	Reverse cycle heat pumps	MVHR System	All Low Energy	19.1	11.9	38.0%	1340	830
E	Second	Apartment	70.0	0.15	0.15	0.12	1.30	Approved	3	Air source heat pump	Reverse cycle heat pumps	MVHR System	All Low Energy	19.1	11.9	38.0%	1340	830

Block G – Be Clean

Block	Floor	Dwelling Type	Area m <sup>2</sup>	Roof U-value W/m <sup>2</sup> K	Wall U-value W/m <sup>2</sup> K	Floor U-Value W/m <sup>2</sup> K	Window U-Value W/m <sup>2</sup> K	Thermal Bridging	APR	Primary Heating	Secondary Heating	Ventilation	Lighting	kgCO <sub>2</sub> /m <sup>2</sup> /yr			kgCO <sub>2</sub> /yr	
														TER	DER	% Imp	TER	DER
G	Townhouse	Townhouse	79.0	0.15	0.15	0.12	1.30	Approved	3	Air source heat pump (split)	None	MVHR System	All Low Energy	16.4	12.3	24.9%	1298	975
G	Townhouse	Townhouse	79.0	0.15	0.15	0.12	1.30	Approved	3	Air source heat pump (split)	None	MVHR System	All Low Energy	16.4	12.3	24.9%	1298	975
G	Townhouse	Townhouse	79.0	0.15	0.15	0.12	1.30	Approved	3	Air source heat pump (split)	None	MVHR System	All Low Energy	16.4	12.3	24.9%	1298	975
G	Townhouse	Townhouse	79.0	0.15	0.15	0.12	1.30	Approved	3	Air source heat pump (split)	None	MVHR System	All Low Energy	16.4	12.3	24.9%	1298	975

Block H – Be Clean

Block	Floor	Dwelling Type	Area m <sup>2</sup>	Roof U-value W/m <sup>2</sup> K	Wall U-value W/m <sup>2</sup> K	Floor U-Value W/m <sup>2</sup> K	Window U-Value W/m <sup>2</sup> K	Thermal Bridging	APR	Primary Heating	Secondary Heating	Ventilation	Lighting	kgCO <sub>2</sub> /m <sup>2</sup> /yr			kgCO <sub>2</sub> /yr	
														TER	DER	% Imp	TER	DER
H	Townhouse	Townhouse	84.0	0.15	0.15	0.12	1.30	Approved	3	Air source heat pump (split)	None	MVHR System	All Low Energy	16.4	12.3	24.9%	1380	1037

Ref: 1823-50-RPT-09

Date: 17<sup>th</sup> March 2023

Revision: 05



Block A – Be Green

Block	Floor	Dwelling Type	Area m <sup>2</sup>	Roof U-value W/m <sup>2</sup> K	Wall U-value W/m <sup>2</sup> K	Floor U-value W/m <sup>2</sup> K	Window U-value W/m <sup>2</sup> K	Thermal Bridging	APR	Primary Heating	Secondary Heating	Ventilation	Lighting	kgCO <sub>2</sub> /m <sup>2</sup> /yr			kgCO <sub>2</sub> /yr	
														TER	DER	% Imp	TER	DER
A	Ground	Apartment	50.0	0.15	0.15	0.12	1.30	Approved	3	Air source heat pump	Reverse cycle heat pumps	MVHR System	All Low Energy	18.4	11.0	40.4%	922	550
A	Ground	Apartment	61.0	0.15	0.15	0.12	1.30	Approved	3	Air source heat pump	Reverse cycle heat pumps	MVHR System	All Low Energy	18.4	11.0	40.4%	1124	670
A	First	Apartment	57.0	0.15	0.15	0.12	1.30	Approved	3	Air source heat pump	Reverse cycle heat pumps	MVHR System	All Low Energy	19.1	11.9	38.0%	1091	676
A	First	Apartment	72.0	0.15	0.15	0.12	1.30	Approved	3	Air source heat pump	Reverse cycle heat pumps	MVHR System	All Low Energy	19.1	11.9	38.0%	1378	854
A	Second	Apartment	57.0	0.15	0.15	0.12	1.30	Approved	3	Air source heat pump	Reverse cycle heat pumps	MVHR System	All Low Energy	19.1	11.9	38.0%	1091	676
A	Second	Apartment	72.0	0.15	0.15	0.12	1.30	Approved	3	Air source heat pump	Reverse cycle heat pumps	MVHR System	All Low Energy	19.1	11.9	38.0%	1378	854

Block D – Be Green

Block	Floor	Dwelling Type	Area m <sup>2</sup>	Roof U-value W/m <sup>2</sup> K	Wall U-value W/m <sup>2</sup> K	Floor U-value W/m <sup>2</sup> K	Window U-value W/m <sup>2</sup> K	Thermal Bridging	APR	Primary Heating	Secondary Heating	Ventilation	Lighting	kgCO <sub>2</sub> /m <sup>2</sup> /yr			kgCO <sub>2</sub> /yr	
														TER	DER	% Imp	TER	DER
D	Townhouse	Townhouse	125.0	0.15	0.15	0.12	1.30	Approved	3	Air source heat pump (split)	None	MVHR System	All Low Energy	16.4	10.7	35.0%	2054	1335
D	Townhouse	Townhouse	125.0	0.15	0.15	0.12	1.30	Approved	3	Air source heat pump (split)	None	MVHR System	All Low Energy	16.4	10.7	35.0%	2054	1335
D	Townhouse	Townhouse	125.0	0.15	0.15	0.12	1.30	Approved	3	Air source heat pump (split)	None	MVHR System	All Low Energy	16.4	10.7	35.0%	2054	1335
D	Townhouse	Townhouse	125.0	0.15	0.15	0.12	1.30	Approved	3	Air source heat pump (split)	None	MVHR System	All Low Energy	16.4	10.7	35.0%	2054	1335
D	Townhouse	Townhouse	127.0	0.15	0.15	0.12	1.30	Approved	3	Air source heat pump (split)	None	MVHR System	All Low Energy	16.4	10.7	35.0%	2087	1356
D	Townhouse	Townhouse	127.0	0.15	0.15	0.12	1.30	Approved	3	Air source heat pump (split)	None	MVHR System	All Low Energy	16.4	10.7	35.0%	2087	1356
D	Townhouse	Townhouse	127.0	0.15	0.15	0.12	1.30	Approved	3	Air source heat pump (split)	None	MVHR System	All Low Energy	16.4	10.7	35.0%	2087	1356
D	Townhouse	Townhouse	127.0	0.15	0.15	0.12	1.30	Approved	3	Air source heat pump (split)	None	MVHR System	All Low Energy	16.4	10.7	35.0%	2087	1356
D	Townhouse	Townhouse	127.0	0.15	0.15	0.12	1.30	Approved	3	Air source heat pump (split)	None	MVHR System	All Low Energy	16.4	10.7	35.0%	2087	1356
D	Townhouse	Townhouse	127.0	0.15	0.15	0.12	1.30	Approved	3	Air source heat pump (split)	None	MVHR System	All Low Energy	16.4	10.7	35.0%	2087	1356
D	Townhouse	Townhouse	127.0	0.15	0.15	0.12	1.30	Approved	3	Air source heat pump (split)	None	MVHR System	All Low Energy	16.4	10.7	35.0%	2087	1356
D	Townhouse	Townhouse	127.0	0.15	0.15	0.12	1.30	Approved	3	Air source heat pump (split)	None	MVHR System	All Low Energy	16.4	10.7	35.0%	2087	1356
D	Townhouse	Townhouse	127.0	0.15	0.15	0.12	1.30	Approved	3	Air source heat pump (split)	None	MVHR System	All Low Energy	16.4	10.7	35.0%	2087	1356
D	Townhouse	Townhouse	127.0	0.15	0.15	0.12	1.30	Approved	3	Air source heat pump (split)	None	MVHR System	All Low Energy	16.4	10.7	35.0%	2087	1356
D	Townhouse	Townhouse	127.0	0.15	0.15	0.12	1.30	Approved	3	Air source heat pump (split)	None	MVHR System	All Low Energy	16.4	10.7	35.0%	2087	1356
D	Townhouse	Townhouse	127.0	0.15	0.15	0.12	1.30	Approved	3	Air source heat pump (split)	None	MVHR System	All Low Energy	16.4	10.7	35.0%	2087	1356

Ref: 1823-50-RPT-09

Date: 17<sup>th</sup> March 2023

Revision: 05



Block C - Be Green

Block	Floor	Dwelling Type	Area m <sup>2</sup>	Roof U-value W/m <sup>2</sup> K	Wall U-value W/m <sup>2</sup> K	Floor U-value W/m <sup>2</sup> K	Window U-value W/m <sup>2</sup> K	Thermal Bridging	APR	Primary Heating	Secondary Heating	Ventilation	Lighting	kgCO <sub>2</sub> /m <sup>2</sup> /yr			kgCO <sub>2</sub> /yr	
														TER	DER	% Imp	TER	DER
C	Townhouse	Townhouse	110.0	0.15	0.15	0.12	1.30	Approved	3	Air source heat pump (split)	None	MVHR System	All Low Energy	16.4	10.7	35.0%	1807	1175
C	Townhouse	Townhouse	108.0	0.15	0.15	0.12	1.30	Approved	3	Air source heat pump (split)	None	MVHR System	All Low Energy	16.4	10.7	35.0%	1774	1153
C	Townhouse	Townhouse	108.0	0.15	0.15	0.12	1.30	Approved	3	Air source heat pump (split)	None	MVHR System	All Low Energy	16.4	10.7	35.0%	1774	1153
C	Townhouse	Townhouse	108.0	0.15	0.15	0.12	1.30	Approved	3	Air source heat pump (split)	None	MVHR System	All Low Energy	16.4	10.7	35.0%	1774	1153
C	Townhouse	Townhouse	112.0	0.15	0.15	0.12	1.30	Approved	3	Air source heat pump (split)	None	MVHR System	All Low Energy	16.4	10.7	35.0%	1840	1196
C	Townhouse	Townhouse	112.0	0.15	0.15	0.12	1.30	Approved	3	Air source heat pump (split)	None	MVHR System	All Low Energy	16.4	10.7	35.0%	1840	1196
C	Townhouse	Townhouse	112.0	0.15	0.15	0.12	1.30	Approved	3	Air source heat pump (split)	None	MVHR System	All Low Energy	16.4	10.7	35.0%	1840	1196
C	Townhouse	Townhouse	112.0	0.15	0.15	0.12	1.30	Approved	3	Air source heat pump (split)	None	MVHR System	All Low Energy	16.4	10.7	35.0%	1840	1196
C	Townhouse	Townhouse	112.0	0.15	0.15	0.12	1.30	Approved	3	Air source heat pump (split)	None	MVHR System	All Low Energy	16.4	10.7	35.0%	1840	1196
C	Townhouse	Townhouse	133.0	0.15	0.15	0.12	1.30	Approved	3	Air source heat pump (split)	None	MVHR System	All Low Energy	16.4	10.7	35.0%	2185	1420
C	Townhouse	Townhouse	133.0	0.15	0.15	0.12	1.30	Approved	3	Air source heat pump (split)	None	MVHR System	All Low Energy	16.4	10.7	35.0%	2185	1420
C	Townhouse	Townhouse	112.0	0.15	0.15	0.12	1.30	Approved	3	Air source heat pump (split)	None	MVHR System	All Low Energy	16.4	10.7	35.0%	1840	1196
C	Townhouse	Townhouse	112.0	0.15	0.15	0.12	1.30	Approved	3	Air source heat pump (split)	None	MVHR System	All Low Energy	16.4	10.7	35.0%	1840	1196
C	Townhouse	Townhouse	112.0	0.15	0.15	0.12	1.30	Approved	3	Air source heat pump (split)	None	MVHR System	All Low Energy	16.4	10.7	35.0%	1840	1196
C	Townhouse	Townhouse	112.0	0.15	0.15	0.12	1.30	Approved	3	Air source heat pump (split)	None	MVHR System	All Low Energy	16.4	10.7	35.0%	1840	1196
C	Townhouse	Townhouse	112.0	0.15	0.15	0.12	1.30	Approved	3	Air source heat pump (split)	None	MVHR System	All Low Energy	16.4	10.7	35.0%	1840	1196
C	Townhouse	Townhouse	133.0	0.15	0.15	0.12	1.30	Approved	3	Air source heat pump (split)	None	MVHR System	All Low Energy	16.4	10.7	35.0%	2185	1420
C	Townhouse	Townhouse	133.0	0.15	0.15	0.12	1.30	Approved	3	Air source heat pump (split)	None	MVHR System	All Low Energy	16.4	10.7	35.0%	2185	1420
C	Townhouse	Townhouse	112.0	0.15	0.15	0.12	1.30	Approved	3	Air source heat pump (split)	None	MVHR System	All Low Energy	16.4	10.7	35.0%	1840	1196
C	Townhouse	Townhouse	112.0	0.15	0.15	0.12	1.30	Approved	3	Air source heat pump (split)	None	MVHR System	All Low Energy	16.4	10.7	35.0%	1840	1196
C	Townhouse	Townhouse	112.0	0.15	0.15	0.12	1.30	Approved	3	Air source heat pump (split)	None	MVHR System	All Low Energy	16.4	10.7	35.0%	1840	1196
C	Townhouse	Townhouse	112.0	0.15	0.15	0.12	1.30	Approved	3	Air source heat pump (split)	None	MVHR System	All Low Energy	16.4	10.7	35.0%	1840	1196
C	Townhouse	Townhouse	112.0	0.15	0.15	0.12	1.30	Approved	3	Air source heat pump (split)	None	MVHR System	All Low Energy	16.4	10.7	35.0%	1840	1196
C	Townhouse	Townhouse	112.0	0.15	0.15	0.12	1.30	Approved	3	Air source heat pump (split)	None	MVHR System	All Low Energy	16.4	10.7	35.0%	1840	1196
C	Townhouse	Townhouse	112.0	0.15	0.15	0.12	1.30	Approved	3	Air source heat pump (split)	None	MVHR System	All Low Energy	16.4	10.7	35.0%	1840	1196
C	Townhouse	Townhouse	112.0	0.15	0.15	0.12	1.30	Approved	3	Air source heat pump (split)	None	MVHR System	All Low Energy	16.4	10.7	35.0%	1840	1196
C	Townhouse	Townhouse	112.0	0.15	0.15	0.12	1.30	Approved	3	Air source heat pump (split)	None	MVHR System	All Low Energy	16.4	10.7	35.0%	1840	1196
C	Townhouse	Townhouse	112.0	0.15	0.15	0.12	1.30	Approved	3	Air source heat pump (split)	None	MVHR System	All Low Energy	16.4	10.7	35.0%	1840	1196

Ref: 1823-50-RPT-09

Date: 17<sup>th</sup> March 2023

Revision: 05

Block E - Be Green

Block	Floor	Dwelling Type	Area m <sup>2</sup>	Roof U-value W/m <sup>2</sup> K	Wall U-value W/m <sup>2</sup> K	Floor U-value W/m <sup>2</sup> K	Window U-value W/m <sup>2</sup> K	Thermal Bridging	APR	Primary Heating	Secondary Heating	Ventilation	Lighting	kgCO <sub>2</sub> /m <sup>2</sup> /yr			kgCO <sub>2</sub> /yr	
														TER	DER	% Imp	TER	DER
E	Ground	Apartment	55.0	0.15	0.15	0.12	1.30	Approved	3	Air source heat pump	Reverse cycle heat pumps	MVHR System	All Low Energy	18.4	11.0	40.4%	1014	604
E	Ground	Apartment	55.0	0.15	0.15	0.12	1.30	Approved	3	Air source heat pump	Reverse cycle heat pumps	MVHR System	All Low Energy	18.4	11.0	40.4%	1014	604
E	First	Apartment	70.0	0.15	0.15	0.12	1.30	Approved	3	Air source heat pump	Reverse cycle heat pumps	MVHR System	All Low Energy	19.1	11.9	38.0%	1340	830
E	First	Apartment	70.0	0.15	0.15	0.12	1.30	Approved	3	Air source heat pump	Reverse cycle heat pumps	MVHR System	All Low Energy	19.1	11.9	38.0%	1340	830
E	Second	Apartment	70.0	0.15	0.15	0.12	1.30	Approved	3	Air source heat pump	Reverse cycle heat pumps	MVHR System	All Low Energy	19.1	11.9	38.0%	1340	830
E	Second	Apartment	70.0	0.15	0.15	0.12	1.30	Approved	3	Air source heat pump	Reverse cycle heat pumps	MVHR System	All Low Energy	19.1	11.9	38.0%	1340	830

Block G – Be Green

Block	Floor	Dwelling Type	Area m <sup>2</sup>	Roof U-value W/m <sup>2</sup> K	Wall U-value W/m <sup>2</sup> K	Floor U-value W/m <sup>2</sup> K	Window U-value W/m <sup>2</sup> K	Thermal Bridging	APR	Primary Heating	Secondary Heating	Ventilation	Lighting	kgCO <sub>2</sub> /m <sup>2</sup> /yr			kgCO <sub>2</sub> /yr	
														TER	DER	% Imp	TER	DER
G	Townhouse	Townhouse	79.0	0.15	0.15	0.12	1.30	Approved	3	Air source heat pump (split)	None	MVHR System	All Low Energy	16.4	10.7	35.0%	1298	844
G	Townhouse	Townhouse	79.0	0.15	0.15	0.12	1.30	Approved	3	Air source heat pump (split)	None	MVHR System	All Low Energy	16.4	10.7	35.0%	1298	844
G	Townhouse	Townhouse	79.0	0.15	0.15	0.12	1.30	Approved	3	Air source heat pump (split)	None	MVHR System	All Low Energy	16.4	10.7	35.0%	1298	844
G	Townhouse	Townhouse	79.0	0.15	0.15	0.12	1.30	Approved	3	Air source heat pump (split)	None	MVHR System	All Low Energy	16.4	10.7	35.0%	1298	844

Block H – Be Green

Block	Floor	Dwelling Type	Area m <sup>2</sup>	Roof U-value W/m <sup>2</sup> K	Wall U-value W/m <sup>2</sup> K	Floor U-value W/m <sup>2</sup> K	Window U-value W/m <sup>2</sup> K	Thermal Bridging	APR	Primary Heating	Secondary Heating	Ventilation	Lighting	kgCO <sub>2</sub> /m <sup>2</sup> /yr			kgCO <sub>2</sub> /yr	
														TER	DER	% Imp	TER	DER
H	Townhouse	Townhouse	84.0	0.15	0.15	0.12	1.30	Approved	3	Air source heat pump (split)	None	MVHR System	All Low Energy	16.4	10.7	35.0%	1380	897

Ref: 1823-50-RPT-09

Date: 17<sup>th</sup> March 2023

Revision: 05



# Appendix C – Be LEAN BRUKL report for industrial units

## BRUKL Output Document

HM Government

Compliance with England Building Regulations Part L 2013

<b>Project name</b>	<b>Shell and Core</b>
<b>Greggs Bakery Commerical Unit 1 - BE LEAN</b>	<b>As designed</b>
<b>Date:</b> Tue Mar 01 07:50:42 2022	

**Administrative information**

**Building Details**

Address: London Square, London, W1F 8GY

**Certification tool**

Calculation engine: Apache  
 Calculation engine version: 7.0.13  
 Interface to calculation engine: IES Virtual Environment  
 Interface to calculation engine version: 7.0.13  
 BRUKL compliance check version: v5.6.b.0

**Certifier details**

Name: Desco  
 Telephone number: 0191 522 2070  
 Address: Azure House, 2 Azure Ct, Sunderland, SR3 3BE

**Criterion 1: The calculated CO<sub>2</sub> emission rate for the building must not exceed the target**

CO <sub>2</sub> emission rate from the notional building, kgCO <sub>2</sub> /m <sup>2</sup> .annum	34
Target CO <sub>2</sub> emission rate (TER), kgCO <sub>2</sub> /m <sup>2</sup> .annum	34
Building CO <sub>2</sub> emission rate (BER), kgCO <sub>2</sub> /m <sup>2</sup> .annum	26
Are emissions from the building less than or equal to the target?	BER ≤< TER
Are as built details the same as used in the BER calculations?	Separate submission

**Criterion 2: The performance of the building fabric and fixed building services should achieve reasonable overall standards of energy efficiency**

Values which do not achieve the standards in the Non-Domestic Building Services Compliance Guide and Part L are displayed in red.

**Building fabric**

Element	U <sub>o-Limit</sub>	U <sub>o-Calc</sub>	U <sub>i-Calc</sub>	Surface where the maximum value occurs*
Wall**	0.35	0.15	0.15	ND000000:Surf[0]
Floor	0.25	0.12	0.12	ND000001:Surf[70]
Roof	0.25	0.15	0.15	ND000000:Surf[1]
Windows***, roof windows, and rooflights	2.2	1.29	1.31	ND000000:Surf[2]
Personnel doors	2.2	-	-	No Personnel doors in building
Vehicle access & similar large doors	1.5	-	-	No Vehicle access doors in building
High usage entrance doors	3.5	-	-	No High usage entrance doors in building
<small>U<sub>o-Limit</sub> = Limiting area-weighted average U-values [W/(m<sup>2</sup>K)]                      U<sub>o-Calc</sub> = Calculated area-weighted average U-values [W/(m<sup>2</sup>K)]                      U<sub>i-Calc</sub> = Calculated maximum individual element U-values [W/(m<sup>2</sup>K)]                      * There might be more than one surface where the maximum U-value occurs.                      ** Automatic U-value check by the tool does not apply to curtain walls whose limiting standard is similar to that for windows.                      *** Display windows and similar glazing are excluded from the U-value check.                      N.B.: Neither roof ventilators (inc. smoke vents) nor swimming pool basins are modelled or checked against the limiting standards by the tool.</small>				

<b>Air Permeability</b>	<b>Worst acceptable standard</b>	<b>This building</b>
m <sup>3</sup> /(h.m <sup>2</sup> ) at 50 Pa	10	3

**BRUKL Output Document**

Compliance with England Building Regulations Part L 2013

Project name

**Shell and Core****Greggs Bakery Commercial Unit 2 - BE  
LEAN**

As designed

Date: Tue Mar 01 07:54:53 2022

**Administrative information****Building Details**

Address: London Square, London, W1F 8GY

**Certification tool**

Calculation engine: Apache

Calculation engine version: 7.0.13

Interface to calculation engine: IES Virtual Environment

Interface to calculation engine version: 7.0.13

BRUKL compliance check version: v5.6.b.0

**Certifier details**

Name: Desco

Telephone number: 0191 522 2070

Address: Azure House, 2 Azure Ct, Sunderland, SR3 3BE

**Criterion 1: The calculated CO<sub>2</sub> emission rate for the building must not exceed the target**

CO <sub>2</sub> emission rate from the notional building, kgCO <sub>2</sub> /m <sup>2</sup> .annum	38.4
Target CO <sub>2</sub> emission rate (TER), kgCO <sub>2</sub> /m <sup>2</sup> .annum	38.4
Building CO <sub>2</sub> emission rate (BER), kgCO <sub>2</sub> /m <sup>2</sup> .annum	29.4
Are emissions from the building less than or equal to the target?	BER ≤< TER
Are as built details the same as used in the BER calculations?	Separate submission

**Criterion 2: The performance of the building fabric and fixed building services should achieve reasonable overall standards of energy efficiency**

Values which do not achieve the standards in the Non-Domestic Building Services Compliance Guide and Part L are displayed in red.

**Building fabric**

Element	U <sub>o-Limit</sub>	U <sub>o-Calc</sub>	U <sub>i-Calc</sub>	Surface where the maximum value occurs*
Wall**	0.35	0.15	0.15	ND000002:Surf[13]
Floor	0.25	0.12	0.12	ND000003:Surf[60]
Roof	0.25	0.15	0.15	ND000002:Surf[0]
Windows***, roof windows, and rooflights	2.2	1.3	1.31	ND000002:Surf[1]
Personnel doors	2.2	-	-	No Personnel doors in building
Vehicle access & similar large doors	1.5	-	-	No Vehicle access doors in building
High usage entrance doors	3.5	-	-	No High usage entrance doors in building
U <sub>o-Limit</sub> = Limiting area-weighted average U-values [W/(m <sup>2</sup> K)] U <sub>o-Calc</sub> = Calculated area-weighted average U-values [W/(m <sup>2</sup> K)] U <sub>i-Calc</sub> = Calculated maximum individual element U-values [W/(m <sup>2</sup> K)] * There might be more than one surface where the maximum U-value occurs. ** Automatic U-value check by the tool does not apply to curtain walls whose limiting standard is similar to that for windows. *** Display windows and similar glazing are excluded from the U-value check. N.B.: Neither roof ventilators (inc. smoke vents) nor swimming pool basins are modelled or checked against the limiting standards by the tool.				

Air Permeability	Worst acceptable standard	This building
m <sup>3</sup> /(h.m <sup>2</sup> ) at 50 Pa	10	3

Ref: 1823-50-RPT-09

Date: 17<sup>th</sup> March 2023

Revision: 05

# BRUKL Output Document HM Government

Compliance with England Building Regulations Part L 2013

<b>Project name</b>	<b>Shell and Core</b>
<b>Greggs Bakery Commerical Unit 3 - BE LEAN</b>	<b>As designed</b>
<b>Date:</b> Thu Jul 14 16:46:04 2022	

## Administrative information

### Building Details

**Address:** London Square, London, W1F 8GY

### Certification tool

**Calculation engine:** Apache

**Calculation engine version:** 7.0.13

**Interface to calculation engine:** IES Virtual Environment

**Interface to calculation engine version:** 7.0.13

**BRUKL compliance check version:** v5.6.b.0

### Certifier details

**Name:** Desco

**Telephone number:** 0191 522 2070

**Address:** Azure House, 2 Azure Ct, Sunderland, SR3 3BE

## Criterion 1: The calculated CO<sub>2</sub> emission rate for the building must not exceed the target

CO <sub>2</sub> emission rate from the notional building, kgCO <sub>2</sub> /m <sup>2</sup> .annum	40.8
Target CO <sub>2</sub> emission rate (TER), kgCO <sub>2</sub> /m <sup>2</sup> .annum	40.8
Building CO <sub>2</sub> emission rate (BER), kgCO <sub>2</sub> /m <sup>2</sup> .annum	29.1
Are emissions from the building less than or equal to the target?	<b>BER =&lt; TER</b>
Are as built details the same as used in the BER calculations?	Separate submission

## Criterion 2: The performance of the building fabric and fixed building services should achieve reasonable overall standards of energy efficiency

Values which do not achieve the standards in the Non-Domestic Building Services Compliance Guide and Part L are displayed in red.

### Building fabric

Element	U <sub>s-Limit</sub>	U <sub>s-Calc</sub>	U <sub>i-Calc</sub>	Surface where the maximum value occurs*
Wall**	0.35	0.15	0.15	ND000004:Surf[13]
Floor	0.25	0.12	0.12	ND000005:Surf[54]
Roof	0.25	0.15	0.15	ND000004:Surf[0]
Windows***, roof windows, and rooflights	2.2	1.3	1.31	ND000004:Surf[1]
Personnel doors	2.2	-	-	No Personnel doors in building
Vehicle access & similar large doors	1.5	-	-	No Vehicle access doors in building
High usage entrance doors	3.5	-	-	No High usage entrance doors in building
<small>U<sub>s-Limit</sub> = Limiting area-weighted average U-values [W/(m<sup>2</sup>K)]                      U<sub>s-Calc</sub> = Calculated area-weighted average U-values [W/(m<sup>2</sup>K)]                      U<sub>i-Calc</sub> = Calculated maximum individual element U-values [W/(m<sup>2</sup>K)]                      * There might be more than one surface where the maximum U-value occurs.                      ** Automatic U-value check by the tool does not apply to curtain walls whose limiting standard is similar to that for windows.                      *** Display windows and similar glazing are excluded from the U-value check.                      N.B.: Neither roof ventilators (inc. smoke vents) nor swimming pool basins are modelled or checked against the limiting standards by the tool.</small>				

Air Permeability	Worst acceptable standard	This building
m <sup>2</sup> /(h.m <sup>2</sup> ) at 50 Pa	10	3

# BRUKL Output Document HM Government

Compliance with England Building Regulations Part L 2013

<b>Project name</b>	<b>Shell and Core</b>
<b>Greggs Bakery Commerical Unit 4 - BE LEAN</b>	As designed
<b>Date:</b> Thu Jul 14 16:42:09 2022	

## Administrative information

<b>Building Details</b>	
Address: London Square, London, W1F 8GY	
<b>Certification tool</b>	
Calculation engine: Apache	<b>Certifier details</b>
Calculation engine version: 7.0.13	
Interface to calculation engine: IES Virtual Environment	
Interface to calculation engine version: 7.0.13	
BRUKL compliance check version: v5.6.b.0	Name: Desco
	Telephone number: 0191 522 2070
	Address: Azure House, 2 Azure Ct, Sunderland, SR3 3BE

## Criterion 1: The calculated CO<sub>2</sub> emission rate for the building must not exceed the target

CO <sub>2</sub> emission rate from the notional building, kgCO <sub>2</sub> /m <sup>2</sup> .annum	39.3
Target CO <sub>2</sub> emission rate (TER), kgCO <sub>2</sub> /m <sup>2</sup> .annum	39.3
Building CO <sub>2</sub> emission rate (BER), kgCO <sub>2</sub> /m <sup>2</sup> .annum	27.9
Are emissions from the building less than or equal to the target?	BER =< TER
Are as built details the same as used in the BER calculations?	Separate submission

## Criterion 2: The performance of the building fabric and fixed building services should achieve reasonable overall standards of energy efficiency

Values which do not achieve the standards in the Non-Domestic Building Services Compliance Guide and Part L are displayed in red.

### Building fabric

Element	U <sub>e-Limit</sub>	U <sub>e-Calc</sub>	U <sub>i-Calc</sub>	Surface where the maximum value occurs*
Wall**	0.35	0.15	0.15	ND000006:Surf[0]
Floor	0.25	0.12	0.12	ND000007:Surf[0]
Roof	0.25	0.15	0.15	ND000006:Surf[1]
Windows***, roof windows, and rooflights	2.2	1.3	1.31	ND000006:Surf[2]
Personnel doors	2.2	2.2	2.2	ND000007:Surf[30]
Vehicle access & similar large doors	1.5	-	-	No Vehicle access doors in building
High usage entrance doors	3.5	-	-	No High usage entrance doors in building
U <sub>e-Limit</sub> = Limiting area-weighted average U-values [W/(m <sup>2</sup> K)] U <sub>e-Calc</sub> = Calculated area-weighted average U-values [W/(m <sup>2</sup> K)] U <sub>i-Calc</sub> = Calculated maximum individual element U-values [W/(m <sup>2</sup> K)]				
* There might be more than one surface where the maximum U-value occurs. ** Automatic U-value check by the tool does not apply to curtain walls whose limiting standard is similar to that for windows. *** Display windows and similar glazing are excluded from the U-value check. N.B.: Neither roof ventilators (inc. smoke vents) nor swimming pool basins are modelled or checked against the limiting standards by the tool.				

Air Permeability	Worst acceptable standard	This building
m <sup>2</sup> /(h.m <sup>2</sup> ) at 50 Pa	10	3

# BRUKL Output Document HM Government

Compliance with England Building Regulations Part L 2013

Project name	Shell and Core
<b>Greggs Bakery Commerical Unit 5 - BE LEAN</b>	As designed
Date: Fri Jul 15 10:32:16 2022	

## Administrative information

### Building Details

Address: London Square, London, W1F 8GY

### Certification tool

Calculation engine: Apache

Calculation engine version: 7.0.13

Interface to calculation engine: IES Virtual Environment

Interface to calculation engine version: 7.0.13

BRUKL compliance check version: v5.6.b.0

### Certifier details

Name: Desco

Telephone number: 0191 522 2070

Address: Azure House, 2 Azure Ct, Sunderland, SR3 3BE

## Criterion 1: The calculated CO<sub>2</sub> emission rate for the building must not exceed the target

CO <sub>2</sub> emission rate from the notional building, kgCO <sub>2</sub> /m <sup>2</sup> .annum	32
Target CO <sub>2</sub> emission rate (TER), kgCO <sub>2</sub> /m <sup>2</sup> .annum	32
Building CO <sub>2</sub> emission rate (BER), kgCO <sub>2</sub> /m <sup>2</sup> .annum	24.1
Are emissions from the building less than or equal to the target?	BER =< TER
Are as built details the same as used in the BER calculations?	Separate submission

## Criterion 2: The performance of the building fabric and fixed building services should achieve reasonable overall standards of energy efficiency

Values which do not achieve the standards in the Non-Domestic Building Services Compliance Guide and Part L are displayed in red.

### Building fabric

Element	U <sub>a-Limit</sub>	U <sub>a-Calc</sub>	U <sub>i-Calc</sub>	Surface where the maximum value occurs*
Wall**	0.35	0.15	0.15	ND000008:Surf[9]
Floor	0.25	0.12	0.12	ND000008:Surf[0]
Roof	0.25	0.15	0.15	ND000008:Surf[20]
Windows***, roof windows, and rooflights	2.2	1.29	1.31	ND000008:Surf[1]
Personnel doors	2.2	-	-	No Personnel doors in building
Vehicle access & similar large doors	1.5	-	-	No Vehicle access doors in building
High usage entrance doors	3.5	-	-	No High usage entrance doors in building
<small>U<sub>a-Limit</sub> = Limiting area-weighted average U-values [W/(m<sup>2</sup>K)]                      U<sub>a-Calc</sub> = Calculated area-weighted average U-values [W/(m<sup>2</sup>K)]                      U<sub>i-Calc</sub> = Calculated maximum individual element U-values [W/(m<sup>2</sup>K)]                 </small>				
<small>* There might be more than one surface where the maximum U-value occurs.                      ** Automatic U-value check by the tool does not apply to curtain walls whose limiting standard is similar to that for windows.                      *** Display windows and similar glazing are excluded from the U-value check.                      N.B.: Neither roof ventilators (inc. smoke vents) nor swimming pool basins are modelled or checked against the limiting standards by the tool.                 </small>				

Air Permeability	Worst acceptable standard	This building
m <sup>3</sup> /(h.m <sup>2</sup> ) at 50 Pa	10	3



# Appendix D – Be CLEAN BRUKL report for industrial units

## BRUKL Output Document

HM Government

Compliance with England Building Regulations Part L 2013

<b>Project name</b>	<b>Shell and Core</b>
<b>Greggs Bakery Commerical Unit 1 - BE CLEAN</b>	As designed
<b>Date:</b> Tue Mar 01 08:09:45 2022	

### Administrative information

**Building Details**  
 Address: London Square, London, W1F 8GY

<p><b>Certification tool</b></p> <p>Calculation engine: Apache</p> <p>Calculation engine version: 7.0.13</p> <p>Interface to calculation engine: IES Virtual Environment</p> <p>Interface to calculation engine version: 7.0.13</p> <p>BRUKL compliance check version: v5.6.b.0</p>	<p><b>Certifier details</b></p> <p>Name: Desco</p> <p>Telephone number: 0191 522 2070</p> <p>Address: Azure House, 2 Azure Ct, Sunderland, SR3 3BE</p>
---	--

### Criterion 1: The calculated CO<sub>2</sub> emission rate for the building must not exceed the target

CO <sub>2</sub> emission rate from the notional building, kgCO <sub>2</sub> /m <sup>2</sup> .annum	36.1
Target CO <sub>2</sub> emission rate (TER), kgCO <sub>2</sub> /m <sup>2</sup> .annum	36.1
Building CO <sub>2</sub> emission rate (BER), kgCO <sub>2</sub> /m <sup>2</sup> .annum	24.1
Are emissions from the building less than or equal to the target?	BER ≤ TER
Are as built details the same as used in the BER calculations?	Separate submission

### Criterion 2: The performance of the building fabric and fixed building services should achieve reasonable overall standards of energy efficiency

Values which do not achieve the standards in the Non-Domestic Building Services Compliance Guide and Part L are displayed in red.

**Building fabric**

Element	U <sub>o-Limit</sub>	U <sub>o-Calc</sub>	U <sub>i-Calc</sub>	Surface where the maximum value occurs*
Wall**	0.35	0.15	0.15	ND000000:Surf[0]
Floor	0.25	0.12	0.12	ND000001:Surf[70]
Roof	0.25	0.15	0.15	ND000000:Surf[1]
Windows***, roof windows, and rooflights	2.2	1.29	1.31	ND000000:Surf[2]
Personnel doors	2.2	-	-	No Personnel doors in building
Vehicle access & similar large doors	1.5	-	-	No Vehicle access doors in building
High usage entrance doors	3.5	-	-	No High usage entrance doors in building
U <sub>o-Limit</sub> = Limiting area-weighted average U-values [W/(m <sup>2</sup> K)]		U <sub>o-Calc</sub> = Calculated area-weighted average U-values [W/(m <sup>2</sup> K)]		U <sub>i-Calc</sub> = Calculated maximum individual element U-values [W/(m <sup>2</sup> K)]
* There might be more than one surface where the maximum U-value occurs.				
** Automatic U-value check by the tool does not apply to curtain walls whose limiting standard is similar to that for windows.				
*** Display windows and similar glazing are excluded from the U-value check.				
N.B.: Neither roof ventilators (inc. smoke vents) nor swimming pool basins are modelled or checked against the limiting standards by the tool.				

Air Permeability	Worst acceptable standard	This building
m <sup>3</sup> /(h.m <sup>2</sup> ) at 50 Pa	10	3

# BRUKL Output Document HM Government

Compliance with England Building Regulations Part L 2013

<b>Project name</b>	<b>Shell and Core</b>
<b>Greggs Bakery Commerical Unit 2 - BE CLEAN</b>	As designed
<b>Date:</b> Tue Mar 01 08:15:31 2022	

## Administrative information

### Building Details

**Address:** London Square, London, W1F 8GY

### Certification tool

**Calculation engine:** Apache  
**Calculation engine version:** 7.0.13  
**Interface to calculation engine:** IES Virtual Environment  
**Interface to calculation engine version:** 7.0.13  
**BRUKL compliance check version:** v5.6.b.0

### Certifier details

**Name:** Desco  
**Telephone number:** 0191 522 2070  
**Address:** Azure House, 2 Azure Ct, Sunderland, SR3 3BE

## Criterion 1: The calculated CO<sub>2</sub> emission rate for the building must not exceed the target

CO <sub>2</sub> emission rate from the notional building, kgCO <sub>2</sub> /m <sup>2</sup> .annum	40.2
Target CO <sub>2</sub> emission rate (TER), kgCO <sub>2</sub> /m <sup>2</sup> .annum	40.2
Building CO <sub>2</sub> emission rate (BER), kgCO <sub>2</sub> /m <sup>2</sup> .annum	27.3
Are emissions from the building less than or equal to the target?	BER <= TER
Are as built details the same as used in the BER calculations?	Separate submission

## Criterion 2: The performance of the building fabric and fixed building services should achieve reasonable overall standards of energy efficiency

Values which do not achieve the standards in the Non-Domestic Building Services Compliance Guide and Part L are displayed in red.

### Building fabric

Element	U <sub>a-Limit</sub>	U <sub>a-Calc</sub>	U <sub>i-Calc</sub>	Surface where the maximum value occurs*
Wall**	0.35	0.15	0.15	ND000002:Surf[13]
Floor	0.25	0.12	0.12	ND000003:Surf[60]
Roof	0.25	0.15	0.15	ND000002:Surf[0]
Windows***, roof windows, and rooflights	2.2	1.3	1.31	ND000002:Surf[1]
Personnel doors	2.2	-	-	No Personnel doors in building
Vehicle access & similar large doors	1.5	-	-	No Vehicle access doors in building
High usage entrance doors	3.5	-	-	No High usage entrance doors in building
<small>U<sub>a-Limit</sub> = Limiting area-weighted average U-values [W/(m<sup>2</sup>K)]                      U<sub>a-Calc</sub> = Calculated area-weighted average U-values [W/(m<sup>2</sup>K)]                      U<sub>i-Calc</sub> = Calculated maximum individual element U-values [W/(m<sup>2</sup>K)]                      * There might be more than one surface where the maximum U-value occurs.                      ** Automatic U-value check by the tool does not apply to curtain walls whose limiting standard is similar to that for windows.                      *** Display windows and similar glazing are excluded from the U-value check.                      N.B.: Neither roof ventilators (inc. smoke vents) nor swimming pool basins are modelled or checked against the limiting standards by the tool.</small>				

Air Permeability	Worst acceptable standard	This building
m <sup>3</sup> /(h.m <sup>2</sup> ) at 50 Pa	10	3

# BRUKL Output Document HM Government

Compliance with England Building Regulations Part L 2013

<b>Project name</b>	<b>Shell and Core</b>
<b>Greggs Bakery Commerical Unit 3 - BE CLEAN</b>	As designed
<b>Date:</b> Fri Jul 15 09:38:33 2022	

## Administrative information

### Building Details

**Address:** London Square, London, W1F 8GY

### Certification tool

**Calculation engine:** Apache  
**Calculation engine version:** 7.0.13  
**Interface to calculation engine:** IES Virtual Environment  
**Interface to calculation engine version:** 7.0.13  
**BRUKL compliance check version:** v5.6.b.0

### Certifier details

**Name:** Desco  
**Telephone number:** 0191 522 2070  
**Address:** Azure House, 2 Azure Ct, Sunderland, SR3 3BE

## Criterion 1: The calculated CO<sub>2</sub> emission rate for the building must not exceed the target

CO <sub>2</sub> emission rate from the notional building, kgCO <sub>2</sub> /m <sup>2</sup> .annum	42.2
Target CO <sub>2</sub> emission rate (TER), kgCO <sub>2</sub> /m <sup>2</sup> .annum	42.2
Building CO <sub>2</sub> emission rate (BER), kgCO <sub>2</sub> /m <sup>2</sup> .annum	27.1
Are emissions from the building less than or equal to the target?	BER ≤ TER
Are as built details the same as used in the BER calculations?	Separate submission

## Criterion 2: The performance of the building fabric and fixed building services should achieve reasonable overall standards of energy efficiency

Values which do not achieve the standards in the Non-Domestic Building Services Compliance Guide and Part L are displayed in red.

### Building fabric

Element	U <sub>a</sub> -Limit	U <sub>a</sub> -Calc	U <sub>i</sub> -Calc	Surface where the maximum value occurs*
Wall**	0.35	0.15	0.15	ND000004:Surf[13]
Floor	0.25	0.12	0.12	ND000005:Surf[54]
Roof	0.25	0.15	0.15	ND000004:Surf[0]
Windows***, roof windows, and rooflights	2.2	1.3	1.31	ND000004:Surf[1]
Personnel doors	2.2	-	-	No Personnel doors in building
Vehicle access & similar large doors	1.5	-	-	No Vehicle access doors in building
High usage entrance doors	3.5	-	-	No High usage entrance doors in building
<small>U<sub>a</sub>-Limit = Limiting area-weighted average U-values [W/(m<sup>2</sup>K)]                      U<sub>a</sub>-Calc = Calculated area-weighted average U-values [W/(m<sup>2</sup>K)]                      U<sub>i</sub>-Calc = Calculated maximum individual element U-values [W/(m<sup>2</sup>K)]</small>				
<small>* There might be more than one surface where the maximum U-value occurs.                      ** Automatic U-value check by the tool does not apply to curtain walls whose limiting standard is similar to that for windows.                      *** Display windows and similar glazing are excluded from the U-value check.                      N.B.: Neither roof ventilators (inc. smoke vents) nor swimming pool basins are modelled or checked against the limiting standards by the tool.</small>				

Air Permeability	Worst acceptable standard	This building
m <sup>3</sup> /(h.m <sup>2</sup> ) at 50 Pa	10	3

## BRUKL Output Document



Compliance with England Building Regulations Part L 2013

Project name

Shell and Core

**Greggs Bakery Commercial Unit 4 - BE  
CLEAN**

As designed

Date: Fri Jul 15 09:44:19 2022

## Administrative information

## Building Details

Address: London Square, London, W1F 8GY

## Certification tool

Calculation engine: Apache

Calculation engine version: 7.0.13

Interface to calculation engine: IES Virtual Environment

Interface to calculation engine version: 7.0.13

BRUKL compliance check version: v5.6.b.0

## Certifier details

Name: Desco

Telephone number: 0191 522 2070

Address: Azure House, 2 Azure Ct, Sunderland, SR3 3BE

Criterion 1: The calculated CO<sub>2</sub> emission rate for the building must not exceed the target

CO <sub>2</sub> emission rate from the notional building, kgCO <sub>2</sub> /m <sup>2</sup> .annum	41.3
Target CO <sub>2</sub> emission rate (TER), kgCO <sub>2</sub> /m <sup>2</sup> .annum	41.3
Building CO <sub>2</sub> emission rate (BER), kgCO <sub>2</sub> /m <sup>2</sup> .annum	25.9
Are emissions from the building less than or equal to the target?	BER =< TER
Are as built details the same as used in the BER calculations?	Separate submission

## Criterion 2: The performance of the building fabric and fixed building services should achieve reasonable overall standards of energy efficiency

Values which do not achieve the standards in the Non-Domestic Building Services Compliance Guide and Part L are displayed in red.

## Building fabric

Element	U <sub>a-Limit</sub>	U <sub>a-Calc</sub>	U <sub>i-Calc</sub>	Surface where the maximum value occurs <sup>*</sup>
Wall**	0.35	0.24	0.26	ND000007:Surf[0]
Floor	0.25	0.22	0.22	ND000007:Surf[55]
Roof	0.25	0.15	0.15	ND000006:Surf[1]
Windows***, roof windows, and rooflights	2.2	1.3	1.31	ND000006:Surf[2]
Personnel doors	2.2	2.2	2.2	ND000007:Surf[28]
Vehicle access & similar large doors	1.5	-	-	No Vehicle access doors in building
High usage entrance doors	3.5	-	-	No High usage entrance doors in building
U <sub>a-Limit</sub> = Limiting area-weighted average U-values [W/(m <sup>2</sup> K)] U <sub>a-Calc</sub> = Calculated area-weighted average U-values [W/(m <sup>2</sup> K)] U <sub>i-Calc</sub> = Calculated maximum individual element U-values [W/(m <sup>2</sup> K)]				
<sup>*</sup> There might be more than one surface where the maximum U-value occurs. <sup>**</sup> Automatic U-value check by the tool does not apply to curtain walls whose limiting standard is similar to that for windows. <sup>***</sup> Display windows and similar glazing are excluded from the U-value check. N.B.: Neither roof ventilators (inc. smoke vents) nor swimming pool basins are modelled or checked against the limiting standards by the tool.				

Air Permeability	Worst acceptable standard	This building
m <sup>3</sup> /(h.m <sup>2</sup> ) at 50 Pa	10	3

Ref: 1823-50-RPT-09

Date: 17<sup>th</sup> March 2023

Revision: 05

## BRUKL Output Document



Compliance with England Building Regulations Part L 2013

Project name

Shell and Core

**Greggs Bakery Commercial Unit 5 - BE  
CLEAN**

As designed

Date: Fri Jul 15 09:47:17 2022

## Administrative information

## Building Details

Address: London Square, London, W1F 8GY

## Certification tool

Calculation engine: Apache

Calculation engine version: 7.0.13

Interface to calculation engine: IES Virtual Environment

Interface to calculation engine version: 7.0.13

BRUKL compliance check version: v5.6.b.0

## Certifier details

Name: Desco

Telephone number: 0191 522 2070

Address: Azure House, 2 Azure Ct, Sunderland, SR3 3BE

Criterion 1: The calculated CO<sub>2</sub> emission rate for the building must not exceed the target

CO <sub>2</sub> emission rate from the notional building, kgCO <sub>2</sub> /m <sup>2</sup> .annum	33.2
Target CO <sub>2</sub> emission rate (TER), kgCO <sub>2</sub> /m <sup>2</sup> .annum	33.2
Building CO <sub>2</sub> emission rate (BER), kgCO <sub>2</sub> /m <sup>2</sup> .annum	22.8
Are emissions from the building less than or equal to the target?	BER ≤ TER
Are as built details the same as used in the BER calculations?	Separate submission

## Criterion 2: The performance of the building fabric and fixed building services should achieve reasonable overall standards of energy efficiency

Values which do not achieve the standards in the Non-Domestic Building Services Compliance Guide and Part L are displayed in red.

## Building fabric

Element	U <sub>o-Limit</sub>	U <sub>o-Calc</sub>	U <sub>i-Calc</sub>	Surface where the maximum value occurs*
Wall**	0.35	0.15	0.15	ND00000A:Surf[8]
Floor	0.25	0.12	0.12	ND00000A:Surf[25]
Roof	0.25	0.15	0.15	ND00000A:Surf[24]
Windows***, roof windows, and rooflights	2.2	1.29	1.31	ND00000A:Surf[0]
Personnel doors	2.2	-	-	No Personnel doors in building
Vehicle access & similar large doors	1.5	-	-	No Vehicle access doors in building
High usage entrance doors	3.5	-	-	No High usage entrance doors in building
U <sub>o-Limit</sub> = Limiting area-weighted average U-values [W/(m <sup>2</sup> K)]				
U <sub>o-Calc</sub> = Calculated area-weighted average U-values [W/(m <sup>2</sup> K)]		U <sub>i-Calc</sub> = Calculated maximum individual element U-values [W/(m <sup>2</sup> K)]		
* There might be more than one surface where the maximum U-value occurs.				
** Automatic U-value check by the tool does not apply to curtain walls whose limiting standard is similar to that for windows.				
*** Display windows and similar glazing are excluded from the U-value check.				
N.B.: Neither roof ventilators (inc. smoke vents) nor swimming pool basins are modelled or checked against the limiting standards by the tool.				

Air Permeability	Worst acceptable standard	This building
m <sup>3</sup> /(h.m <sup>2</sup> ) at 50 Pa	10	3

Ref: 1823-50-RPT-09

Date: 17<sup>th</sup> March 2023

Revision: 05

# Appendix E – Be GREEN BRUKL report for industrial units

## BRUKL Output Document HM Government Compliance with England Building Regulations Part L 2013

Project name	<b>Shell and Core</b>
<b>Greggs Bakery Commerical Unit 1 - BE GREEN</b>	As designed
Date: Tue Mar 01 08:29:51 2022	

### Administrative information

#### Building Details

Address: London Square, London, W1F 8GY

#### Certification tool

Calculation engine: Apache

Calculation engine version: 7.0.13

Interface to calculation engine: IES Virtual Environment

Interface to calculation engine version: 7.0.13

BRUKL compliance check version: v5.6.b.0

#### Certifier details

Name: Desco

Telephone number: 0191 522 2070

Address: Azure House, 2 Azure Ct, Sunderland, SR3 3BE

### Criterion 1: The calculated CO<sub>2</sub> emission rate for the building must not exceed the target

CO <sub>2</sub> emission rate from the notional building, kgCO <sub>2</sub> /m <sup>2</sup> .annum	36.1
Target CO <sub>2</sub> emission rate (TER), kgCO <sub>2</sub> /m <sup>2</sup> .annum	36.1
Building CO <sub>2</sub> emission rate (BER), kgCO <sub>2</sub> /m <sup>2</sup> .annum	11.5
Are emissions from the building less than or equal to the target?	BER ≤ TER
Are as built details the same as used in the BER calculations?	Separate submission

### Criterion 2: The performance of the building fabric and fixed building services should achieve reasonable overall standards of energy efficiency

Values which do not achieve the standards in the Non-Domestic Building Services Compliance Guide and Part L are displayed in red.

#### Building fabric

Element	U <sub>o-Limit</sub>	U <sub>o-Calc</sub>	U <sub>i-Calc</sub>	Surface where the maximum value occurs*
Wall**	0.35	0.15	0.15	ND000000:Surf[0]
Floor	0.25	0.12	0.12	ND000001:Surf[70]
Roof	0.25	0.15	0.15	ND000000:Surf[1]
Windows***, roof windows, and rooflights	2.2	1.29	1.31	ND000000:Surf[2]
Personnel doors	2.2	-	-	No Personnel doors in building
Vehicle access & similar large doors	1.5	-	-	No Vehicle access doors in building
High usage entrance doors	3.5	-	-	No High usage entrance doors in building
U <sub>o-Limit</sub> = Limiting area-weighted average U-values [W/(m <sup>2</sup> K)]				
U <sub>o-Calc</sub> = Calculated area-weighted average U-values [W/(m <sup>2</sup> K)]				U <sub>i-Calc</sub> = Calculated maximum individual element U-values [W/(m <sup>2</sup> K)]
* There might be more than one surface where the maximum U-value occurs.				
** Automatic U-value check by the tool does not apply to curtain walls whose limiting standard is similar to that for windows.				
*** Display windows and similar glazing are excluded from the U-value check.				
N.B.: Neither roof ventilators (inc. smoke vents) nor swimming pool basins are modelled or checked against the limiting standards by the tool.				

Air Permeability	Worst acceptable standard	This building
m <sup>2</sup> /(h.m <sup>2</sup> ) at 50 Pa	10	3

# BRUKL Output Document HM Government

Compliance with England Building Regulations Part L 2013

<b>Project name</b>	<b>Shell and Core</b>
<b>Greggs Bakery Commerical Unit 2 - BE GREEN</b>	<b>As designed</b>
<b>Date:</b> Tue Mar 01 08:33:00 2022	

## Administrative information

### Building Details

**Address:** London Square, London, W1F 8GY

### Certification tool

**Calculation engine:** Apache  
**Calculation engine version:** 7.0.13  
**Interface to calculation engine:** IES Virtual Environment  
**Interface to calculation engine version:** 7.0.13  
**BRUKL compliance check version:** v5.6.b.0

### Certifier details

**Name:** Desco  
**Telephone number:** 0191 522 2070  
**Address:** Azure House, 2 Azure Ct, Sunderland, SR3 3BE

## Criterion 1: The calculated CO<sub>2</sub> emission rate for the building must not exceed the target

CO <sub>2</sub> emission rate from the notional building, kgCO <sub>2</sub> /m <sup>2</sup> .annum	40.2
Target CO <sub>2</sub> emission rate (TER), kgCO <sub>2</sub> /m <sup>2</sup> .annum	40.2
Building CO <sub>2</sub> emission rate (BER), kgCO <sub>2</sub> /m <sup>2</sup> .annum	15.1
Are emissions from the building less than or equal to the target?	BER ≤ TER
Are as built details the same as used in the BER calculations?	Separate submission

## Criterion 2: The performance of the building fabric and fixed building services should achieve reasonable overall standards of energy efficiency

Values which do not achieve the standards in the Non-Domestic Building Services Compliance Guide and Part L are displayed in red.

### Building fabric

Element	U <sub>a-Limit</sub>	U <sub>a-Calc</sub>	U <sub>i-Calc</sub>	Surface where the maximum value occurs*
Wall**	0.35	0.15	0.15	ND000002:Surf[13]
Floor	0.25	0.12	0.12	ND000003:Surf[60]
Roof	0.25	0.15	0.15	ND000002:Surf[0]
Windows***, roof windows, and rooflights	2.2	1.3	1.31	ND000002:Surf[1]
Personnel doors	2.2	-	-	No Personnel doors in building
Vehicle access & similar large doors	1.5	-	-	No Vehicle access doors in building
High usage entrance doors	3.5	-	-	No High usage entrance doors in building
<small>U<sub>a-Limit</sub> = Limiting area-weighted average U-values [W/(m<sup>2</sup>K)]                      U<sub>a-Calc</sub> = Calculated area-weighted average U-values [W/(m<sup>2</sup>K)]</small>		<small>U<sub>i-Calc</sub> = Calculated maximum individual element U-values [W/(m<sup>2</sup>K)]</small>		
<small>* There might be more than one surface where the maximum U-value occurs.                      ** Automatic U-value check by the tool does not apply to curtain walls whose limiting standard is similar to that for windows.                      *** Display windows and similar glazing are excluded from the U-value check.                      N.B.: Neither roof ventilators (inc. smoke vents) nor swimming pool basins are modelled or checked against the limiting standards by the tool.</small>				

Air Permeability	Worst acceptable standard	This building
m <sup>3</sup> /(h.m <sup>2</sup> ) at 50 Pa	10	3

# BRUKL Output Document HM Government

Compliance with England Building Regulations Part L 2013

<b>Project name</b>	<b>Shell and Core</b>
<b>Greggs Bakery Commerical Unit 3 - BE GREEN</b>	As designed
<b>Date:</b> Fri Jul 15 11:29:58 2022	

## Administrative information

### Building Details

**Address:** London Square, London, W1F 8GY

### Certification tool

**Calculation engine:** Apache  
**Calculation engine version:** 7.0.13  
**Interface to calculation engine:** IES Virtual Environment  
**Interface to calculation engine version:** 7.0.13  
**BRUKL compliance check version:** v5.6.b.0

### Certifier details

**Name:** Desco  
**Telephone number:** 0191 522 2070  
**Address:** Azure House, 2 Azure Ct, Sunderland, SR3 3BE

## Criterion 1: The calculated CO<sub>2</sub> emission rate for the building must not exceed the target

CO <sub>2</sub> emission rate from the notional building, kgCO <sub>2</sub> /m <sup>2</sup> .annum	42.2
Target CO <sub>2</sub> emission rate (TER), kgCO <sub>2</sub> /m <sup>2</sup> .annum	42.2
Building CO <sub>2</sub> emission rate (BER), kgCO <sub>2</sub> /m <sup>2</sup> .annum	14.9
Are emissions from the building less than or equal to the target?	BER =< TER
Are as built details the same as used in the BER calculations?	Separate submission

## Criterion 2: The performance of the building fabric and fixed building services should achieve reasonable overall standards of energy efficiency

Values which do not achieve the standards in the Non-Domestic Building Services Compliance Guide and Part L are displayed in red.

### Building fabric

Element	U <sub>a-Limit</sub>	U <sub>a-Calc</sub>	U <sub>i-Calc</sub>	Surface where the maximum value occurs*
Wall**	0.35	0.15	0.15	ND000004:Surf[13]
Floor	0.25	0.12	0.12	ND000005:Surf[54]
Roof	0.25	0.15	0.15	ND000004:Surf[0]
Windows***, roof windows, and rooflights	2.2	1.3	1.31	ND000004:Surf[1]
Personnel doors	2.2	-	-	No Personnel doors in building
Vehicle access & similar large doors	1.5	-	-	No Vehicle access doors in building
High usage entrance doors	3.5	-	-	No High usage entrance doors in building
<small>U<sub>a-Limit</sub> = Limiting area-weighted average U-values [W/(m<sup>2</sup>K)]                      U<sub>a-Calc</sub> = Calculated area-weighted average U-values [W/(m<sup>2</sup>K)]                      U<sub>i-Calc</sub> = Calculated maximum individual element U-values [W/(m<sup>2</sup>K)]</small>				
<small>* There might be more than one surface where the maximum U-value occurs.                      ** Automatic U-value check by the tool does not apply to curtain walls whose limiting standard is similar to that for windows.                      *** Display windows and similar glazing are excluded from the U-value check.                      N.B.: Neither roof ventilators (inc. smoke vents) nor swimming pool basins are modelled or checked against the limiting standards by the tool.</small>				

Air Permeability	Worst acceptable standard	This building
m <sup>3</sup> /(h.m <sup>2</sup> ) at 50 Pa	10	3



## BRUKL Output Document



Compliance with England Building Regulations Part L 2013

Project name

Shell and Core

**Greggs Bakery Commercial Unit 4 - BE  
GREEN**

As designed

Date: Fri Jul 15 11:32:06 2022

## Administrative information

## Building Details

Address: London Square, London, W1F 8GY

## Certification tool

Calculation engine: Apache

Calculation engine version: 7.0.13

Interface to calculation engine: IES Virtual Environment

Interface to calculation engine version: 7.0.13

BRUKL compliance check version: v5.6.b.0

## Certifier details

Name: Desco

Telephone number: 0191 522 2070

Address: Azure House, 2 Azure Ct, Sunderland, SR3 3BE

Criterion 1: The calculated CO<sub>2</sub> emission rate for the building must not exceed the target

CO <sub>2</sub> emission rate from the notional building, kgCO <sub>2</sub> /m <sup>2</sup> .annum	41.3
Target CO <sub>2</sub> emission rate (TER), kgCO <sub>2</sub> /m <sup>2</sup> .annum	41.3
Building CO <sub>2</sub> emission rate (BER), kgCO <sub>2</sub> /m <sup>2</sup> .annum	16.6
Are emissions from the building less than or equal to the target?	BER ≤ TER
Are as built details the same as used in the BER calculations?	Separate submission

## Criterion 2: The performance of the building fabric and fixed building services should achieve reasonable overall standards of energy efficiency

Values which do not achieve the standards in the Non-Domestic Building Services Compliance Guide and Part L are displayed in red.

## Building fabric

Element	U <sub>a-Limit</sub>	U <sub>a-Calc</sub>	U <sub>i-Calc</sub>	Surface where the maximum value occurs*
Wall**	0.35	0.24	0.26	ND000007:Surf[0]
Floor	0.25	0.22	0.22	ND000007:Surf[55]
Roof	0.25	0.15	0.15	ND000006:Surf[1]
Windows***, roof windows, and rooflights	2.2	1.3	1.31	ND000006:Surf[2]
Personnel doors	2.2	2.2	2.2	ND000007:Surf[28]
Vehicle access & similar large doors	1.5	-	-	No Vehicle access doors in building
High usage entrance doors	3.5	-	-	No High usage entrance doors in building
U <sub>a-Limit</sub> = Limiting area-weighted average U-values [W/(m <sup>2</sup> K)] U <sub>a-Calc</sub> = Calculated area-weighted average U-values [W/(m <sup>2</sup> K)] U <sub>i-Calc</sub> = Calculated maximum individual element U-values [W/(m <sup>2</sup> K)]				
* There might be more than one surface where the maximum U-value occurs.				
** Automatic U-value check by the tool does not apply to certain walls whose limiting standard is similar to that for windows.				
*** Display windows and similar glazing are excluded from the U-value check.				
N.B.: Neither roof ventilators (inc. smoke vents) nor swimming pool basins are modelled or checked against the limiting standards by the tool.				

Air Permeability	Worst acceptable standard	This building
m <sup>3</sup> /(h.m <sup>2</sup> ) at 50 Pa	10	3

Ref: 1823-50-RPT-09

Date: 17<sup>th</sup> March 2023

Revision: 05

**BRUKL Output Document**

Compliance with England Building Regulations Part L 2013

Project name

Shell and Core

**Greggs Bakery Commercial Unit 5 - BE GREEN**

As designed

Date: Fri Jul 15 11:34:46 2022

**Administrative information****Building Details**

Address: London Square, London, W1F 8GY

**Certification tool**

Calculation engine: Apache

Calculation engine version: 7.0.13

Interface to calculation engine: IES Virtual Environment

Interface to calculation engine version: 7.0.13

BRUKL compliance check version: v5.6.b.0

**Certifier details**

Name: Desco

Telephone number: 0191 522 2070

Address: Azure House, 2 Azure Ct, Sunderland, SR3 3BE

**Criterion 1: The calculated CO<sub>2</sub> emission rate for the building must not exceed the target**

CO <sub>2</sub> emission rate from the notional building, kgCO <sub>2</sub> /m <sup>2</sup> .annum	33.2
Target CO <sub>2</sub> emission rate (TER), kgCO <sub>2</sub> /m <sup>2</sup> .annum	33.2
Building CO <sub>2</sub> emission rate (BER), kgCO <sub>2</sub> /m <sup>2</sup> .annum	22.8
Are emissions from the building less than or equal to the target?	BER <= TER
Are as built details the same as used in the BER calculations?	Separate submission

**Criterion 2: The performance of the building fabric and fixed building services should achieve reasonable overall standards of energy efficiency**

Values which do not achieve the standards in the Non-Domestic Building Services Compliance Guide and Part L are displayed in red.

**Building fabric**

Element	U <sub>o-limit</sub>	U <sub>o-calc</sub>	U <sub>i-calc</sub>	Surface where the maximum value occurs*
Wall**	0.35	0.15	0.15	ND00000A:Surf[8]
Floor	0.25	0.12	0.12	ND00000A:Surf[25]
Roof	0.25	0.15	0.15	ND00000A:Surf[24]
Windows***, roof windows, and rooflights	2.2	1.29	1.31	ND00000A:Surf[0]
Personnel doors	2.2	-	-	No Personnel doors in building
Vehicle access & similar large doors	1.5	-	-	No Vehicle access doors in building
High usage entrance doors	3.5	-	-	No High usage entrance doors in building
U <sub>o-limit</sub> = Limiting area-weighted average U-values [W/(m <sup>2</sup> K)]				
U <sub>o-calc</sub> = Calculated area-weighted average U-values [W/(m <sup>2</sup> K)]			U <sub>i-calc</sub> = Calculated maximum individual element U-values [W/(m <sup>2</sup> K)]	
* There might be more than one surface where the maximum U-value occurs.				
** Automatic U-value check by the tool does not apply to curtain walls whose limiting standard is similar to that for windows.				
*** Display windows and similar glazing are excluded from the U-value check.				
N.B.: Neither roof ventilators (inc. smoke vents) nor swimming pool basins are modelled or checked against the limiting standards by the tool.				

Air Permeability	Worst acceptable standard	This building
m <sup>3</sup> /(h.m <sup>2</sup> ) at 50 Pa	10	3

Ref: 1823-50-RPT-09

Date: 17<sup>th</sup> March 2023

Revision: 05

## Appendix F – GLA Summary Tables

## SAP10 PERFORMANCE

Table 1: Carbon Dioxide Emissions after each stage of the Energy Hierarchy for domestic buildings

	Carbon Dioxide Emissions for domestic buildings (Tonnes CO <sub>2</sub> per annum)	
	Regulated	Unregulated
Baseline: Part L 2013 of the Building Regulations Compliant Development	121	
After energy demand reduction	103	
After heat network / CHP	41	
After renewable energy	32	

Table 2: Regulated Carbon Dioxide savings from each stage of the Energy Hierarchy for domestic buildings

	Regulated domestic carbon dioxide savings	
	(Tonnes CO <sub>2</sub> per annum)	(%)
Savings from energy demand reduction	18	15%
Savings from heat network / CHP	62	51%
Savings from renewable energy	9	7%
<b>Cumulative on site savings</b>	<b>90</b>	<b>74%</b>
Annual savings from off-set payment	32	-
	(Tonnes CO <sub>2</sub> )	
<b>Cumulative savings for off-set payment</b>	<b>954</b>	-
<b>Cash in-lieu contribution (£)</b>	<b>90,630</b>	

Table 3: Carbon Dioxide Emissions after each stage of the Energy Hierarchy for non-domestic buildings

	Carbon Dioxide Emissions for non-domestic buildings (Tonnes CO <sub>2</sub> per annum)	
	Regulated	Unregulated
Baseline: Part L 2013 of the Building Regulations Compliant Development	20	
After energy demand reduction	14	
After heat network / CHP	12	
After renewable energy	7	

Table 4: Regulated Carbon Dioxide savings from each stage of the Energy Hierarchy for non-domestic buildings

	Regulated non-domestic carbon dioxide savings	
	(Tonnes CO <sub>2</sub> per annum)	(%)
Savings from energy demand reduction	5	27%
Savings from heat network / CHP	3	14%
Savings from renewable energy	5	23%
<b>Total Cumulative Savings</b>	<b>13</b>	<b>65%</b>

Table 5: Shortfall in regulated carbon dioxide savings

	Annual Shortfall (Tonnes CO <sub>2</sub> )	Cumulative Shortfall (Tonnes CO <sub>2</sub> )
Total Target Savings	7	-
Shortfall	-6	-174
<b>Cash in-lieu contribution (£)</b>	<b>0</b>	<b>-</b>

	Total regulated emissions (Tonnes CO2 / year)	CO2 savings (Tonnes CO2 / year)	Percentage savings (%)
Part L 2013 baseline	141		
Be lean	117	24	17%
Be clean	52	65	46%
Be green	39	14	10%
	-	<b>CO2 savings off-set (Tonnes CO2)</b>	-
Off-set	-	<b>779</b>	-