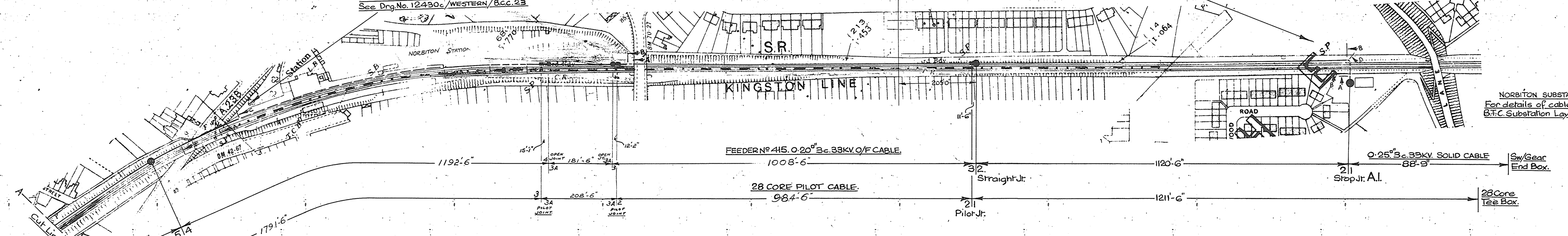


For detail of cable route in this area.  
See Drg. No. 12430c/WESTERN/B.C.C. 23

For detail of cable route in these areas  
See Drg. No. 12430c/WESTERN/B.C.C. 24. SHEETS 1 & 2



CROSS SECTIONS OF CABLE ROUTE FACING TEDDINGTON SUB/STN.

	12 1/2" B.C.T. Double Lids.		G.R.C. Troughing
A.	C.	E.	M.
	12 1/2" B.C.T.		K.
B.	D.	F.	H.

Total 33KV Feeder Cable Length  
5092 1/2 Yds 0.20" 3c O/F Cable  
52 Yds 0.25" 3c Solid Cable  
Total 28 Core Pilot Cable Length  
2534 1/2 Yds From Norbiton to Kingston T.P. Hut  
2537 1/2 Yds From Kingston T.P. Hut to Teddington.

Reference.  
Surface Route. ———  
Buried Route. - - - -  
Feeder Joints. ●  
Pilot Joints. ○  
Scale 1/1250.

3 LHD:K'CW 18-11-57  
APP:SGH 19-11-57  
DUE TO REMOVAL OF ORIGINAL PILOT JOINT 1/2 36 FEET NEW PILOT CABLE INSERTED.

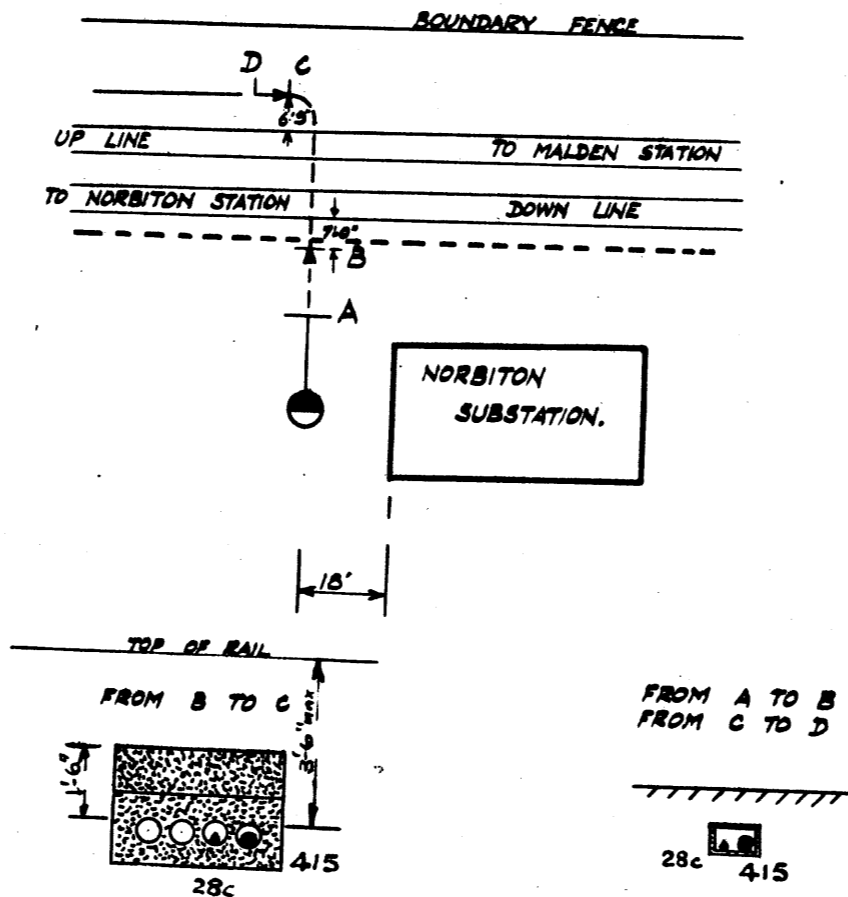
2 CHD:WJB 24-8-56  
APP:DW 7-9-56  
KINGSTON T.P. HUT RESULT ON OPPOSITE SIDE OF TRACK.  
LENGTH OF PILOT CABLE WAS 2634 1/2 YDS. NORBITON - KINGSTON = 2537 1/2 YDS. KINGSTON - TEDDINGTON = 1000. INSERTION IN 500.

1 CHD:NEC 2-6-71  
APP:NEC 2-6-71  
CHECK LAYOUT REVISIONS.  
JOINTS WERE 4/3 FOR 1/2 3/4 PILOT. REMOVED JTS. 1/2A - 3/4/3. 3/2A, 3/4/2. 1000. INSERTION IN 500.

**IRELLI GENERAL**  
CABLE WORKS LTD.  
Norbiton to Teddington.  
Feeder No. 415.

DRAWN BY	M.
DATE	3-10-55.
CHECKED BY	J.P.G. SECT. ENG.
DRG No 12430c/WESTERN/FC.5 (SHEET 1)	

# NORBITON SUBSTATION



### ROUTE DETAILS.

- A TO B 12" BURIED CONCRETE TROUGHS 6" AVERAGE COVER
- B TO C 4x5" DUCTS 42" FROM TOP OF TUBE TO RUNNING RAIL.
- C TO D 12" BURIED CONCRETE TROUGHS 6" AVERAGE COVER

CROSS-SECTIONS FACING NORBITON STATION.

## BURIED CABLE CHART

—————	SURFACE ROUTE
- - - - -	BURIED ROUTE
●	STOP JOINT
- - - - ->	LEAD TO DUCTS.
<b>SCALES 1" = 40' &amp; 1" = 4' 0"</b>	
DIMENSIONS FOR ROUTE LOCATION ONLY & DO NOT REFER TO CABLE LENGTH	

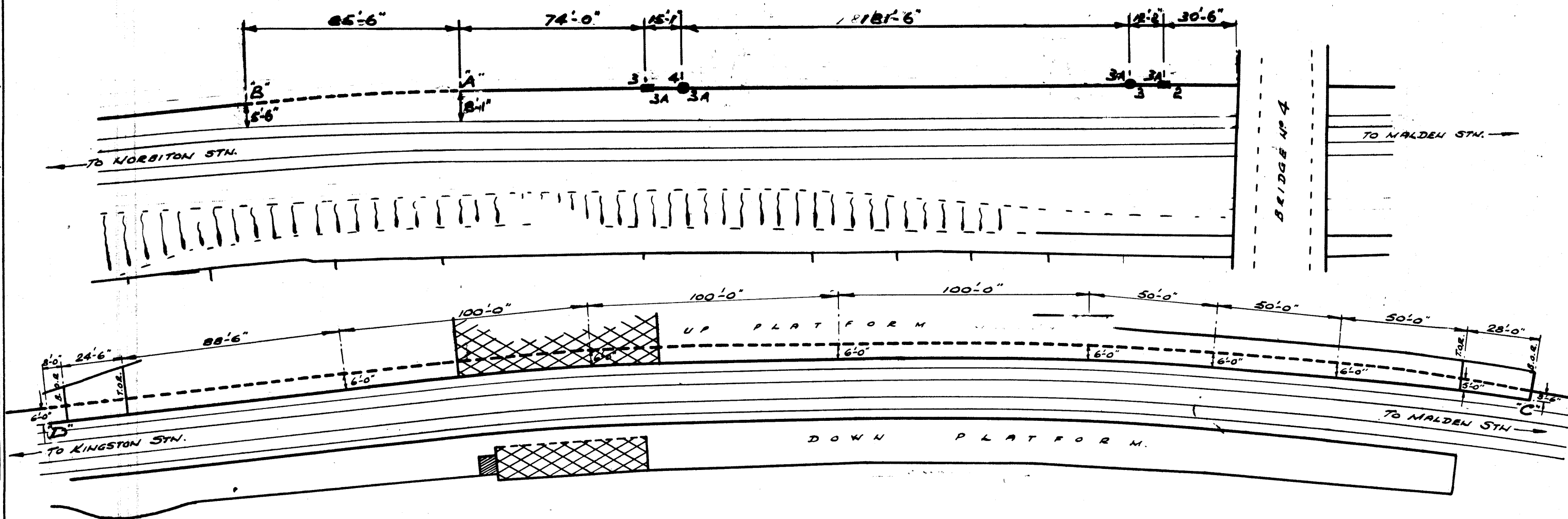
4002

BRITISH RAILWAYS  
SOUTHERN REGION  
CHIEF MECH. & ELECT. ENGRS. DEPT.  
15, ST. THOMAS ST., S.E.1.

FEEDER NO 415  
& PILOT CABLE  
NORBITON 3/8 TO TEDDINGTON 3/8

VELOGRAPH 1W/SHT.60

# NORBITON STATION AND GOODS SIDINGS TO BRIDGE N° 4.



## CROSS SECTIONS FACING KINGSTON STN

SURFACE ROUTE.	—————
BURIED ROUTE.	-----
LEAD TO PUCTS	----->

SCALES 1" = 40' & 1" = 4' 0"

DIMENSIONS FOR ROUTE LOCATION ONLY & DO NOT REFER TO CABLE LENGTH

FROM A TO B 12 1/2" B.C.T. 6" AVERAGE COVER.  
FROM C TO D 12 1/2" B.C.T. DOUBLE LIDS 3" COVER.

## BURIED CABLE CHART

1 CHD. NO. 2-6-71  
1 APD. No. 2-6-71  
NO 415 FOR RE-ROUTED JOINTS RE-NUMBERED  
DIMENSIONS & NOTES REVISED.

4003.

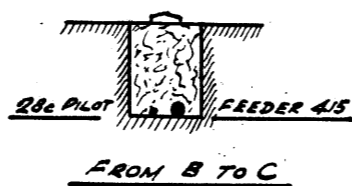
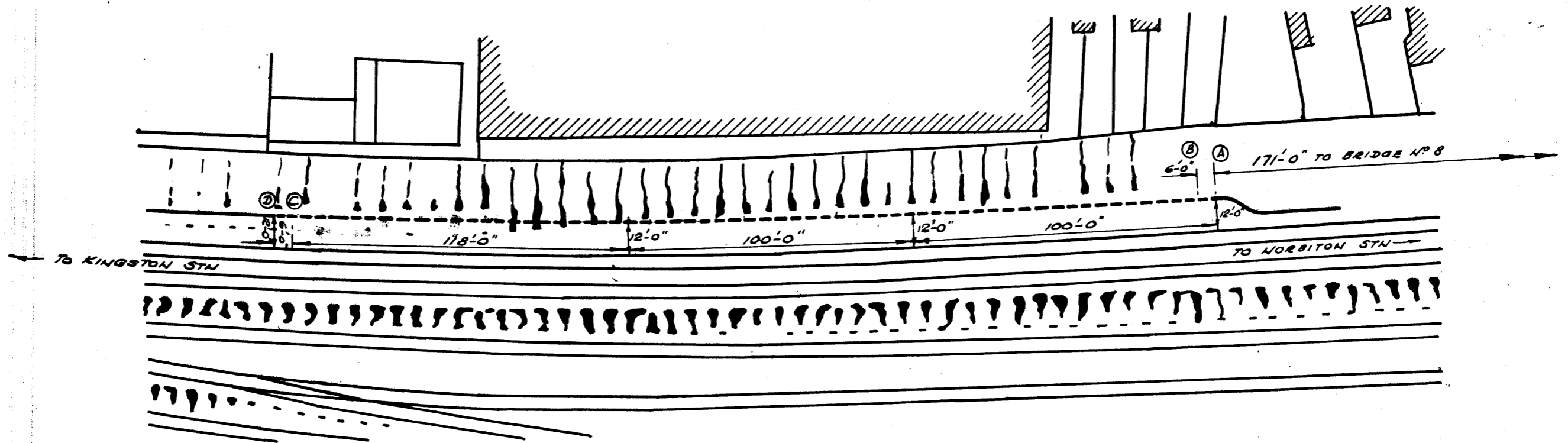
SOUTHERN RAILWAYS  
SIGNALING SECTION  
CHIEF ENGINEER & ASSIST. ENGRS. DEPT.  
11, ST. THOMAS ST., S.E. 1.

FEEDER NO 415,  
& PILOT CABLE  
NORBITON 3/8 TO TEDDINGTON 5/8

VELOGRAPH

1W/SHT. 61

BETWEEN KINGSTON STATION AND BRIDGE N° 8.



FROM A TO B } 12 1/2" B.C.T. 6" AV. COVER, ONE SLAB.  
FROM C TO D }  
FROM B TO C } BURIED DIRECT 1-9" COVER, ONE SLAB.

CROSS SECTIONS FACING KINGSTON STN

BURIED CABLE CHART

SURFACE ROUTE	—————
BURIED ROUTE	- - - - -
SCALES 1" = 40' & 1" = 4' 0"	
DIMENSIONS FOR ROUTE LOCATION ONLY & DO NOT REFER TO CABLE LENGTH	

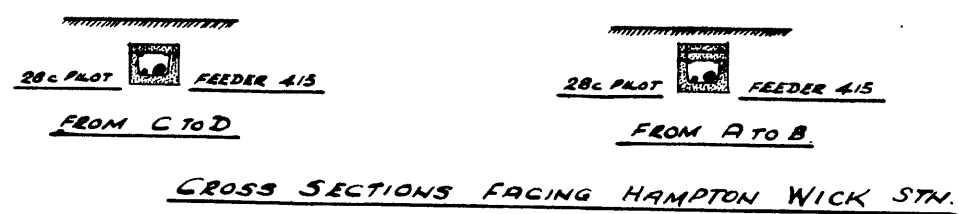
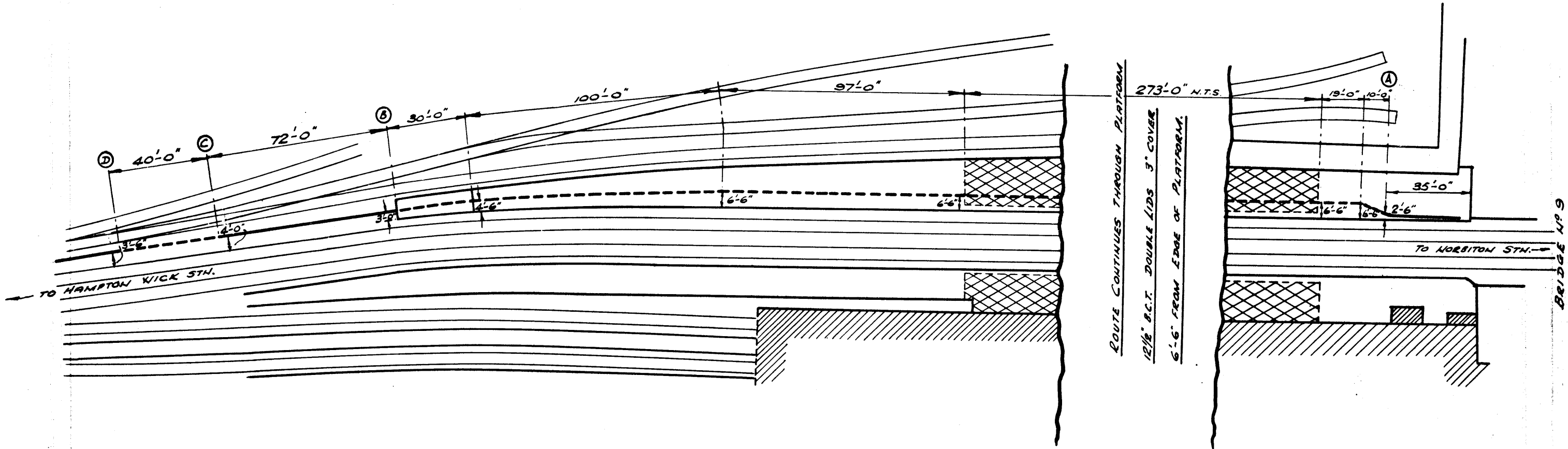
4004

BRITISH RAILWAYS  
SOUTHERN REGION  
CHIEF ENGR. & DIST. ENGRS. DEPT.  
15, ST. MARKS ST., SE1.

FEEDER N° 415  
& PILOT CABLE  
NORBITON 3/8 TO TEDDINGTON 5/8.

VELOGRAPH 1W/SHT. 62

# KINGSTON STATION.



FROM A TO B 12 1/2" B.C.T. DOUBLE LIDS 3' COVER.  
 FROM C TO D 12 1/2" B.C.T. 6" AVERAGE COVER.

NORBITON TO KINGSTON T.P. BUT 28 CORE PILOT CABLE  
 SUPPLEMENTARY TO DRAWING NO 12430c/WESTERN/F.C. 5 SHEET 1

CHECKED BY: 12430c/WEST/W.C.C.25 SHEET 1

SURFACE ROUTE.	—————
BURIED ROUTE.	-----
<b>SCALES 1" = 40' &amp; 1" = 4' 0"</b>	
DIMENSIONS FOR ROUTE LOCATION ONLY & DO NOT REFER TO CABLE LENGTH	

## BURIED CABLE CHART

**BRITISH RAILWAYS**  
**SOUTHERN REGION**  
**CHIEF MECH. & ELECT. ENGRS. DEPT.**  
**15, ST. THOMAS ST., S.E.1.**

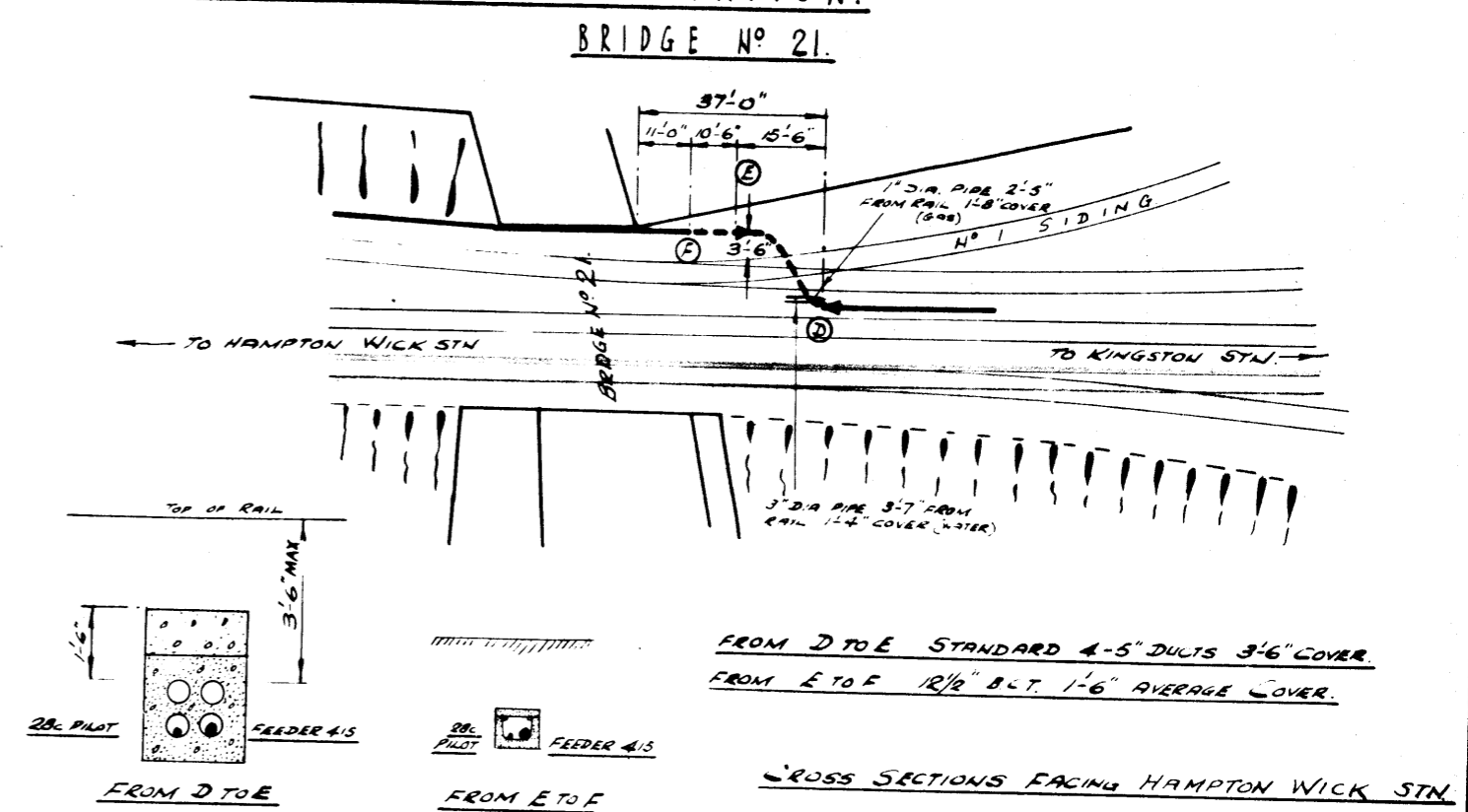
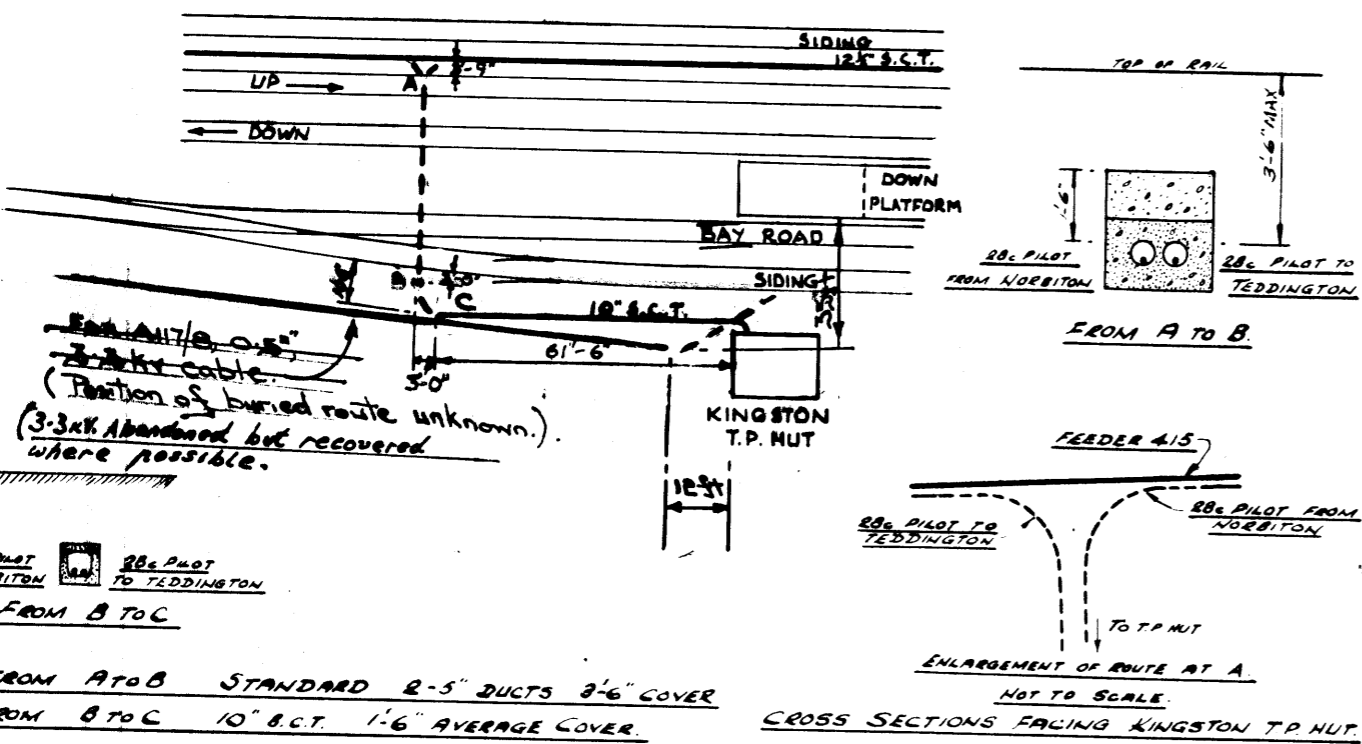
**FEEDER NO 415**  
**& PILOT CABLE**

**NORBITON 3/8 TO TEDDINGTON 5/8**

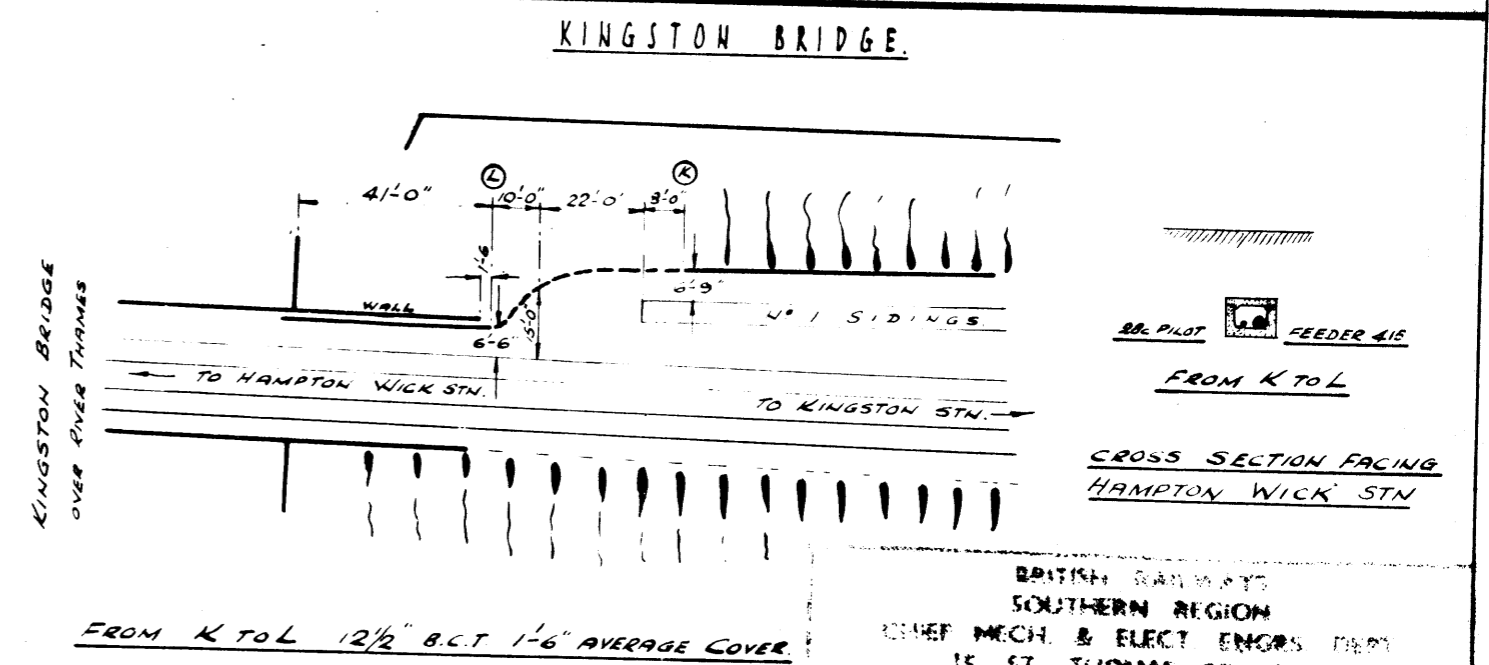
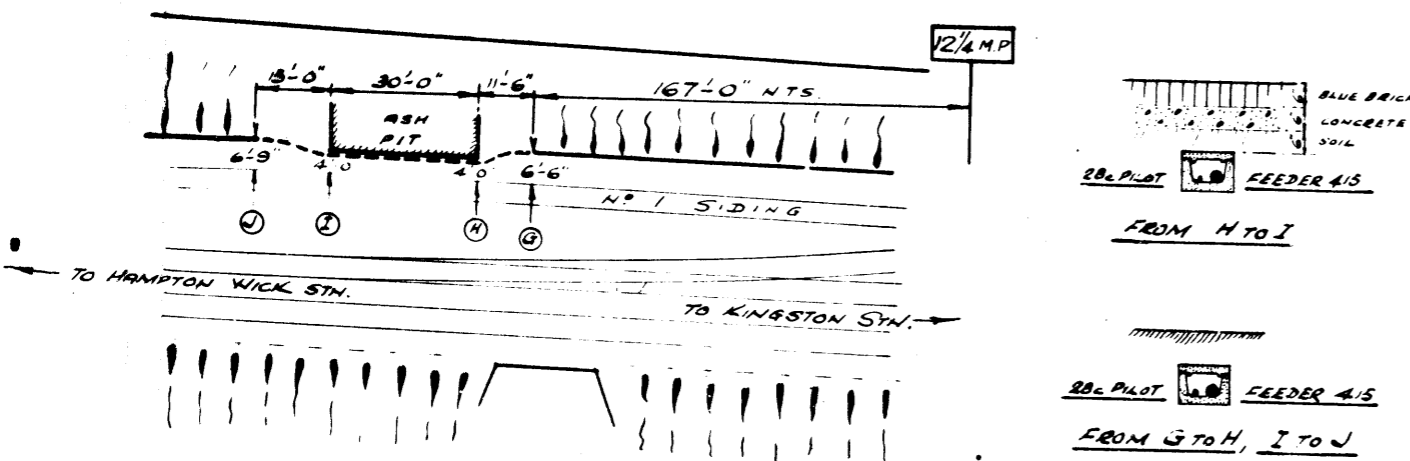
VELOGRAPH  
 1W/SHT. 63

4005

BETWEEN KINGSTON BRIDGE (OVER RIVER THAMES) AND KINGSTON STATION.  
 KINGSTON T.P. MUT NO T. II.



12 1/4 MILE POST



SURFACE ROUTE.	—————
BURIED ROUTE.	- - - - -
LEAD TO DUCTS.	—————
SCALES 1" = 40' & 1" = 4' 0"	
DIMENSIONS FOR ROUTE LOCATION ONLY & DO NOT REFER TO CABLE LENGTH	

CROSS SECTIONS FACING HAMPTON WICK STN

FROM G TO H } 12 1/2" B.C.T. 3' AVERAGE COVER.

FROM I TO J } 12 1/2" B.C.T. 1'-6" COVER.

FROM H TO I } 12 1/2" B.C.T. 1'-6" COVER.

BURIED CABLE CHART

1 CHD: AC. 6-6-27  
 APP: W. 6-6-27

TRACK LAYOUT AT KINGSTON T.P. MUT WAS INCORRECT. LAYOUT CHECKED ON SITE AND CORRECTED.

2 APP: 12-1-28

3/3 FOR A11/8

APP: -

BRITISH RAILWAYS SOUTHERN REGION  
 CHIEF MECH. & ELECT ENGRS DEPT  
 15, ST. THOMAS ST., S.E.1.

FEEDER NO 4/5 & PILOT CABLE

NORBITON S. TO TEDDINGTON S.

VELOGRAPH

4006

1W/SHT.64

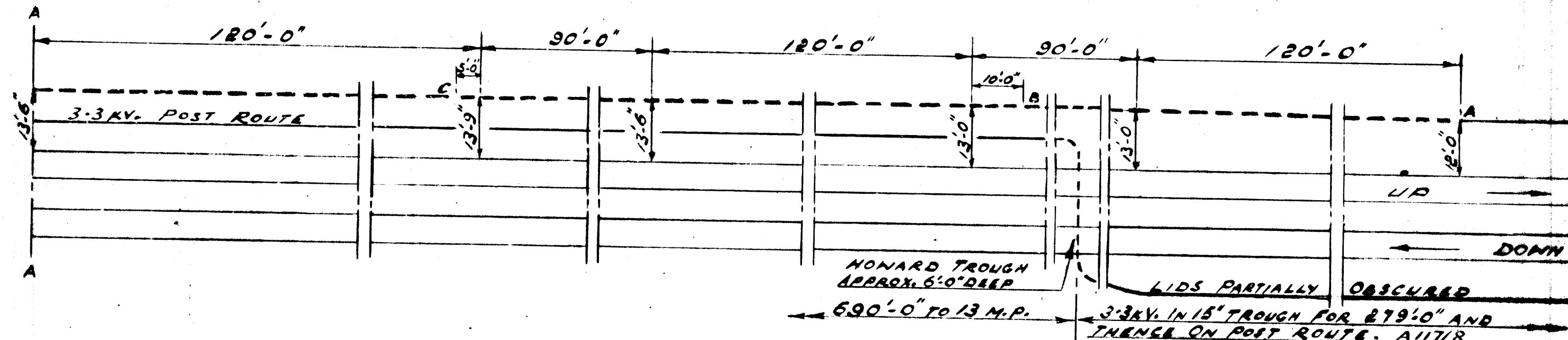
SUPPLEMENTARY TO DRAWING NO 12430C/WESTERN/F.C.5 SHEET 1

REG. NO 12430C/WEST/B.C.C. 25 SHEET 2

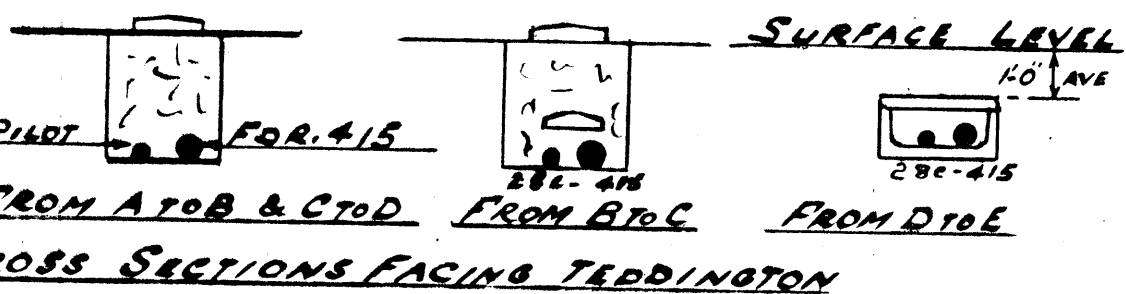
**BURIED ROUTE LONDON SIDE  
OF FAIRFAX LEVEL CROSSING.**

← TO TEDDINGTON.

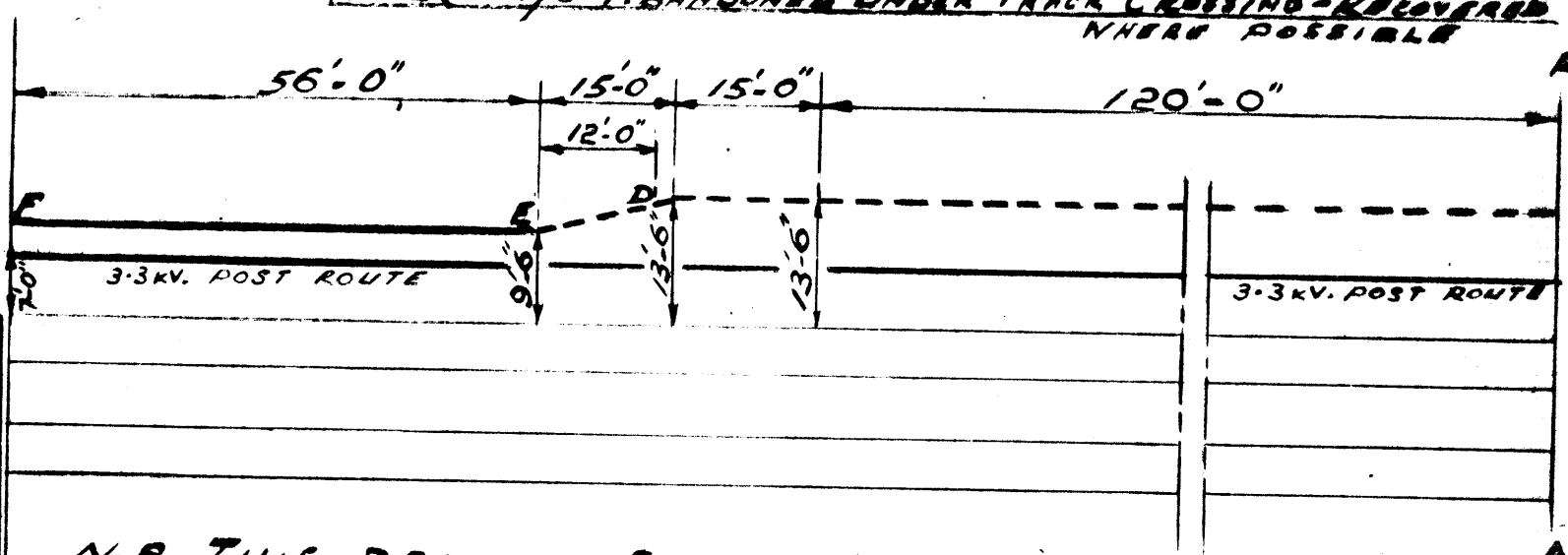
TO HAMPTON WICK →



NOTE (A117/8 ABANDONED UNDER TRACK CROSSING - RECOVERED WHERE POSSIBLE)



FOR CONTINUATION SEE CHART NO. 1W. 65A



N.B. THIS DRAWING SUPERSEDES 1W/65 MICRO-FILM. 4007

STANDARD METRIC TROUGHING :- S.M.T.	
SURFACE ROUTE	—————
BURIED ROUTE	- - - - -
LEAD TO DUCTS	← - - - - - →
SURFACE FEEDER JOINT	○
BURIED FEEDER JOINT	●
SURFACE PILOT JOINT	□
BURIED PILOT JOINT	■
SCALE: 20'-0" TO 1"	
DIMENSIONS ARE FOR ROUTE LOCATION ONLY & DO NOT REFER TO CABLE LENGTH	

BRITISH RAILWAYS  
SOUTHERN REGION  
CHIEF, MECH. & ELEC. ENGRS. DEPT  
SOUTHERN HOUSE CROYDON

**NORBITON STN. TO TEDDINGTON 1/4 MILE  
FEEDER NO. 415 &  
28 CORE PILOT CABLE**

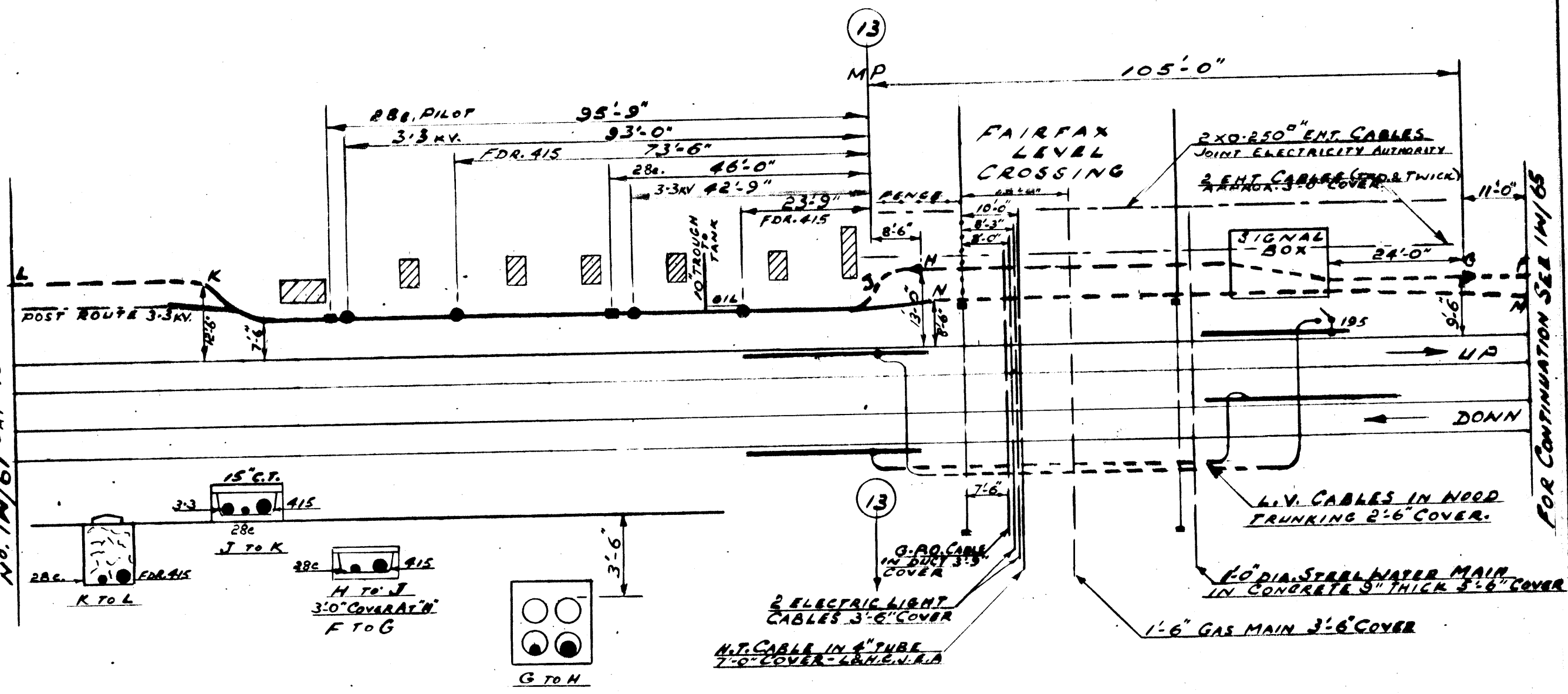
OWN: 10/3/65	AGD: ~	CHART No.
CHD: 10/3/65		1W/65
APP: 10/3/65		

TO TEDDINGTON

# FAIRFAX LEVEL CROSSING

TO HAMPTON WICK

FOR CONTINUATION SEE CHART NO. 1W/67 - AT 40'-0" TO 1"



FOR CONTINUATION SEE 1W/65

M TO N - 3.3KV ROUTE IN HOWARD TROUGHING 4'-0" DEEP APPROX. A117/8 ABANDONED BETWEEN M&N, BUT RECOVERED WHERE POSSIBLE.

STANDARD METRIC TROUGHING	:- S.M.T.
SURFACE ROUTE	—————
BURIED ROUTE	- - - - -
LEAD TO DUCTS	——><——
SURFACE FEEDER JOINT	——●——
BURIED FEEDER JOINT	- - - ● - - -
SURFACE PILOT JOINT	——□——
BURIED PILOT JOINT	- - - □ - - -
SCALE:	20'-0" TO 1"
DIMENSIONS ARE FOR ROUTE LOCATION ONLY & DO NOT REFER TO CABLE LENGTH	

BRITISH RAILWAYS  
SOUTHERN REGION  
CHIEF MECH. & ELEC. ENGRS. DEPT  
SOUTHERN HOUSE CROYDON

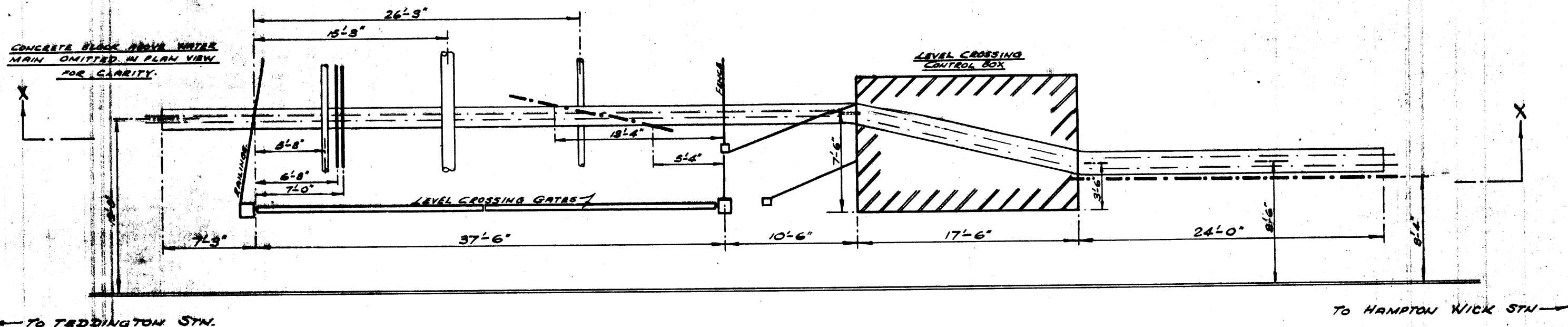
**NORBITON 5/8 TO TEDDINGTON 5/8  
FEEDER NO. 412 &  
2BCORE PILOT CABLE**

OWNED BY: 1/1/65 AGD: ~  
CHD: 2/1/65  
APP: 1/1/65

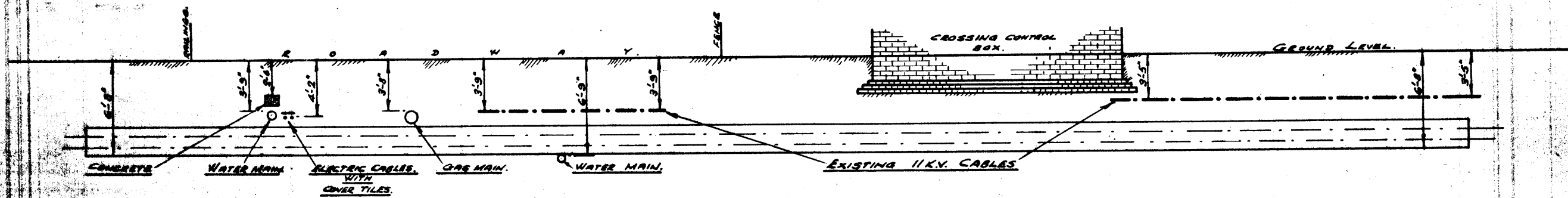
CHART No.  
**1W/65A**



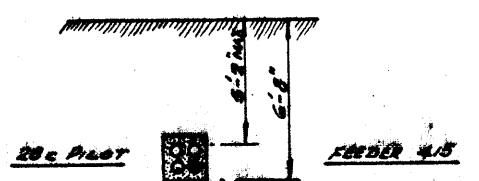
# FAIRFAX LEVEL CROSSING.



## PLAN



## SECTION X-X



CROSS SECTION OF DUCTS  
FACING TEDDINGTON STN.

# BURIED CABLE CHART

**SCALE** 1" = 8'-0"

DIMENSIONS FOR ROUTE LOCATION ONLY  
& DO NOT REFER TO CABLE LENGTH

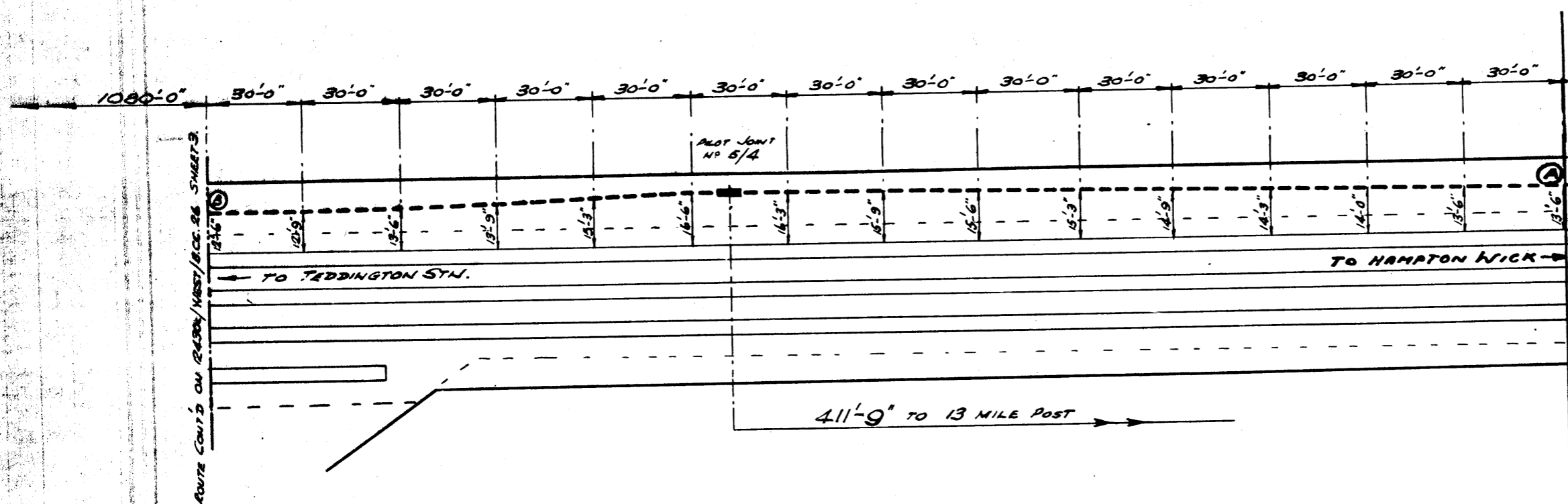
4008

**FEEDER NO. 15  
& PILOT CABLE**

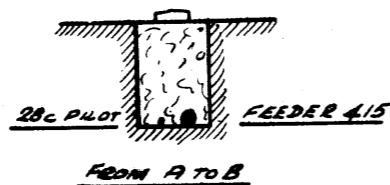
NORBITON S. TO TEDDINGTON S.

1/11/54/66

# BETWEEN TEDDINGTON STATION AND FAIRFAX LEVEL CROSSING.



411'-9" TO 13 MILE POST



FROM A TO B BURIED DIRECT 1'-9" COVER ONE SLAB.

CROSS SECTION FACING TEDDINGTON STN.

SURFACE ROUTE	—————
BURIED ROUTE	-----
BURIED PILOT JOINT	-----
<b>SCALES 1" = 40' &amp; 1" = 4'0"</b>	
DIMENSIONS FOR ROUTE LOCATION ONLY & DO NOT REFER TO CABLE LENGTH	

## BURIED CABLE CHART

1 CHD. NO. 31-5-72  
 APD. 19C 31-5-72  
 DRAWING REVISED  
 AT LONDON END TO  
 MATCH UP WITH  
 NEW CHART NO.  
 1W/65A.

BOTH SCALES  
 MUST BE USED  
 AND THE DISTANCE  
 IN FEET MUST BE  
 100 FEET

**FEEDER NO 415  
 & PILOT CABLE**

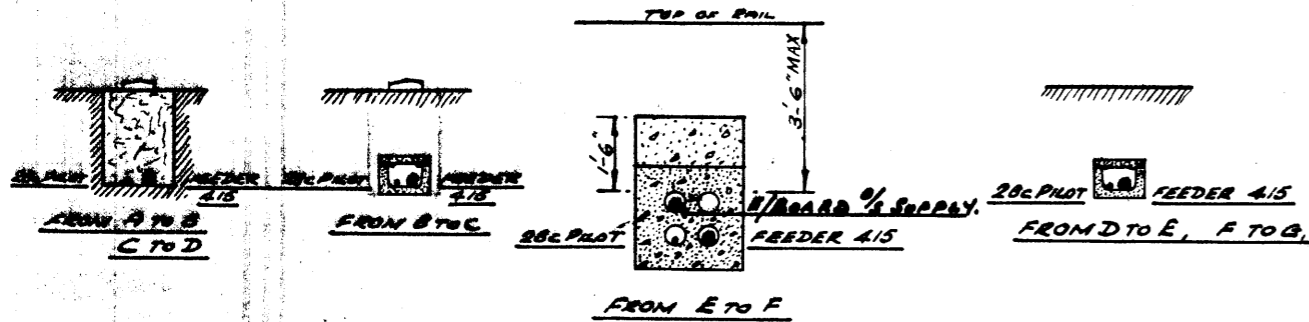
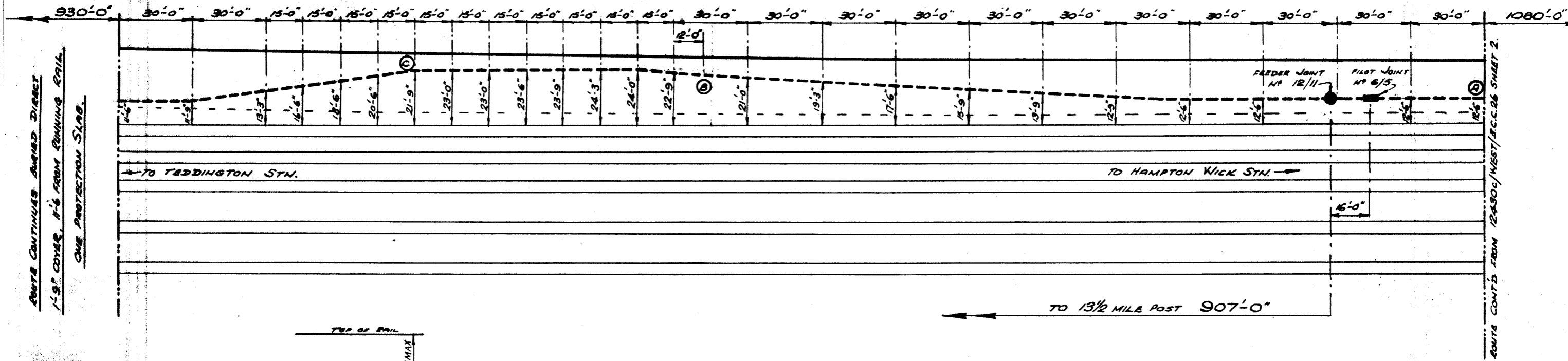
NORBITON'S TO TEDDINGTON'S

VELOGRAPH

1W/SMT. 67

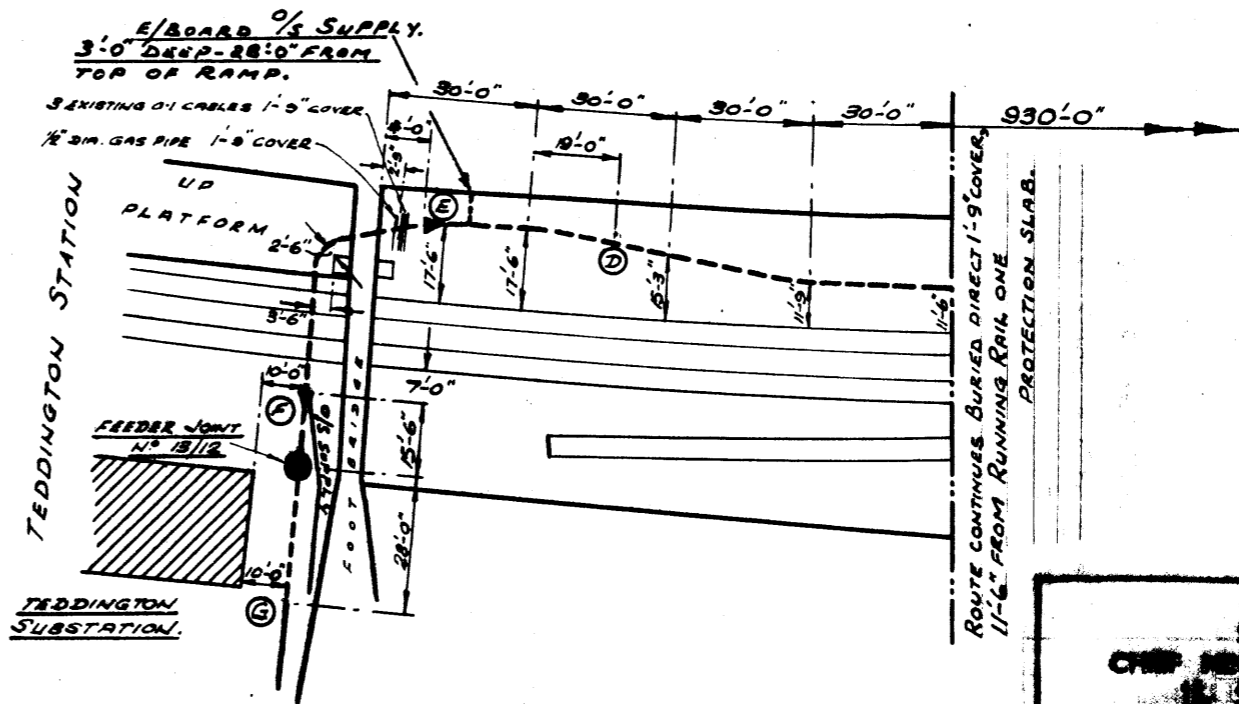
4009

# BETWEEN TEDDINGTON STATION AND FAIRFAX LEVEL CROSSING.



**CROSS SECTIONS FACING TEDDINGTON STN**

- FROM A TO B } BURIED DIRECT 1-9" COVER, ONE SLAB.
- C TO D }
- FROM B TO C } 12 1/2" B.C.T. 1-6" AVERAGE COVER, ONE SLAB.
- FROM D TO E } 12 1/2" B.C.T. 1-6" AVERAGE COVER.
- F TO G }
- FROM E TO F } STANDARD 4-5" DUCTS 3-6" COVER.



SURFACE ROUTE.	—————
BURIED ROUTE.	- - - - -
LEAD TO DUCTS.	----->
BURIED FEEDER JOINT.	-----●-----
BURIED PILOT JOINT.	-----●-----
<b>SCALES 1" = 40' &amp; 1" = 4' 0"</b>	
DIMENSIONS FOR ROUTE LOCATION ONLY & DO NOT REFER TO CABLE LENGTH	

## BURIED CABLE CHART

1. ACT. NO. 8-10-76  
 1. APP. C. J. W. 9.10.76  
 ELECTRICITY BOARD  
 OUTSIDE SUPPLY  
 ROUTE ADDED.

BRITISH RAILWAYS  
SOUTHERN DIVISION  
CHIEF ENGINEER & S.E.C.T. ENGRS. DEPT.  
11, ST. MARKS ST. S.E.1.

**FEEDER NO 4/15  
& PILOT CABLE**

**NORBITON 1/2 TO TEDDINGTON 1/2**

VELOGRAPH

1W/SHT 68

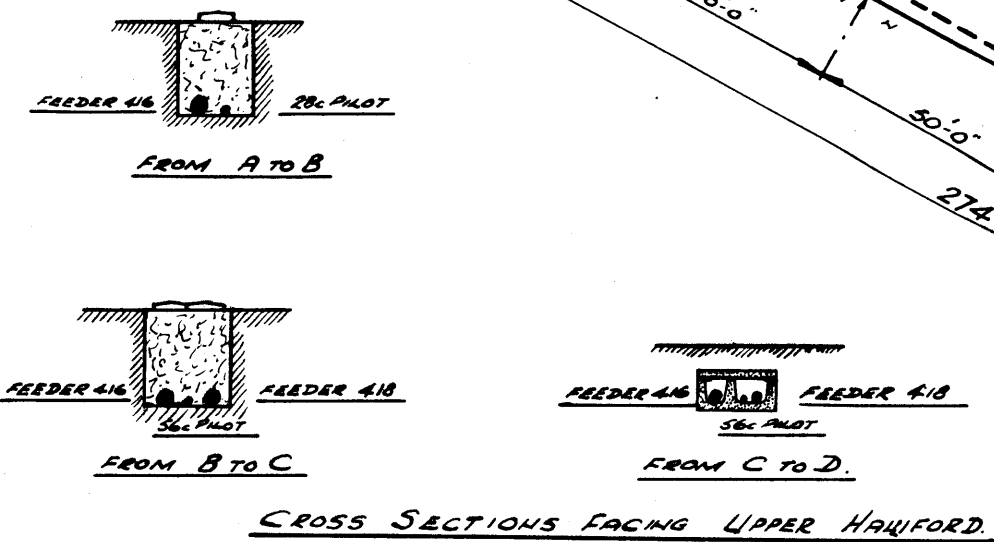
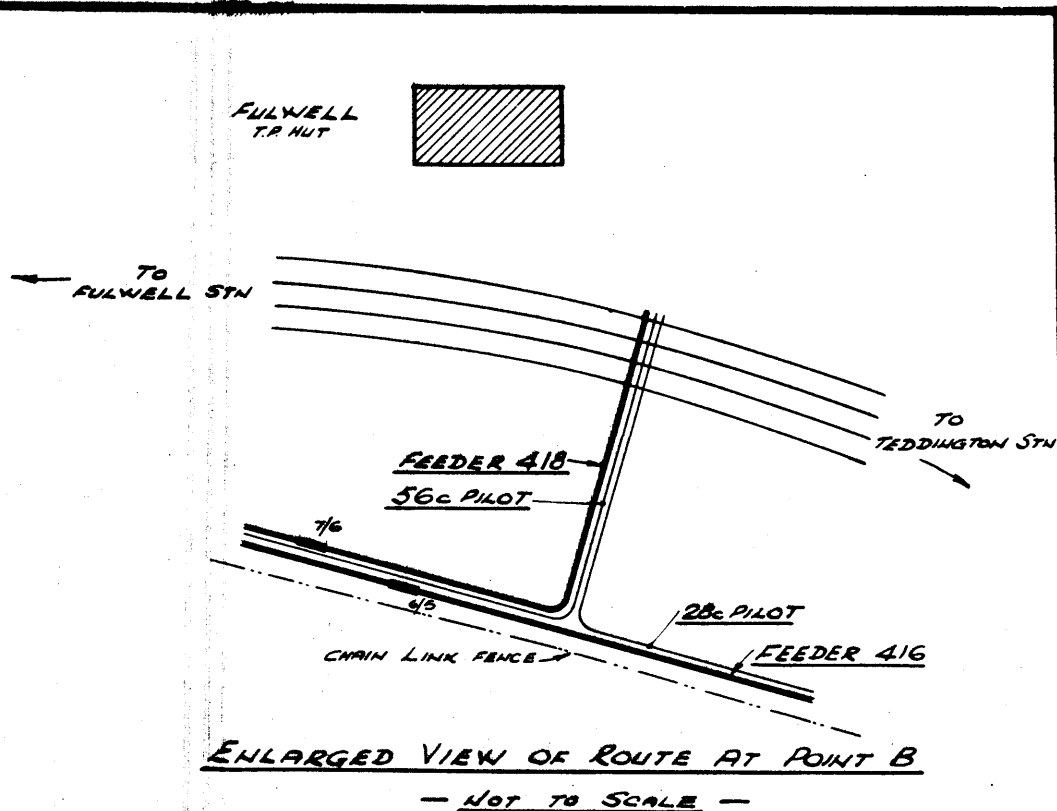
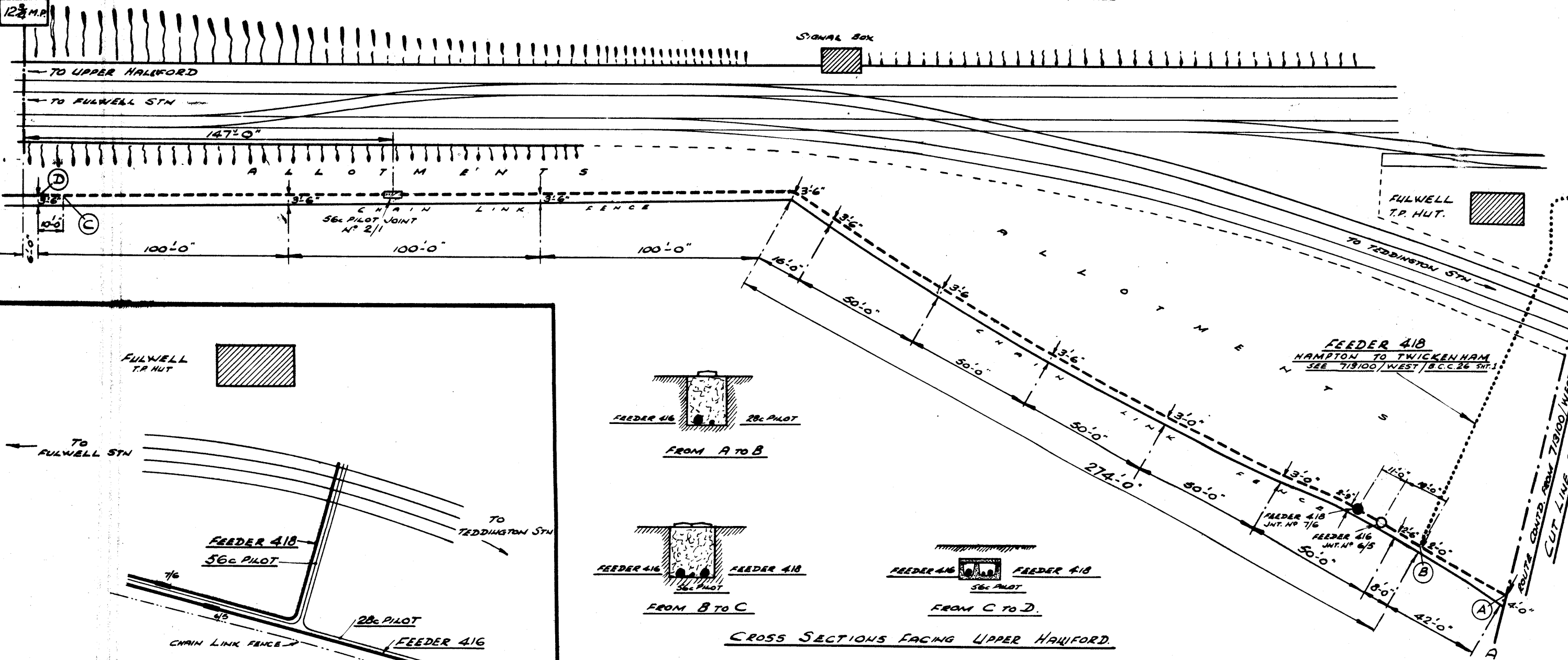
4010

# FULWELL T.P. HUT TO 12 3/4 MILE POST.

SUPPLEMENTARY TO DRAWING NO 713100 WESTERN F.C. 6 SHEET 1.

713100 WEST/B.C.C. 419

DRG. NO



FROM A TO B BURIED DIRECT 1'-9" COVER, ONE SLAB.  
 FROM B TO C BURIED DIRECT 1'-9" COVER, TWO SLABS  
 FROM C TO D 19 1/2" B.C.T. 6" AVERAGE COVER.

SURFACE ROUTE	—————
BURIED ROUTE	- - - - -
FEEDER 418	.....
FEEDER JOINTS	---●---○---
PILOT JOINTS	---□---
<b>SCALES 1" = 40' &amp; 1" = 4' 0"</b>	
DIMENSIONS FOR ROUTE LOCATION ONLY & DO NOT REFER TO CABLE LENGTH	

## BURIED CABLE CHART

4015

**BRITISH RAILWAYS**  
SOUTHERN REGION  
CHIEF MECH. & ELECT. ENGRS. DEPT.  
15, ST. THOMAS ST., S.E.1.

**FEEDER NO 416 & 418**  
& PILOT CABLES  
TEDDINGTON 5/8 TO UPPER HALFORD 5/8.  
TWICKENHAM 5/8 TO HAMPTON 5/8.

VELOGRAPH  
1W/SHT. 73

# Network Rail - Drainage

## Legend

- Company Ownership**
- Freehold Ownership
  - Leasehold Ownership
  - Prohibitive Interest
  - Bridge (Rail over Rail)
  - Bridge (Rail over River)
  - Bridge (Rail over Road)
  - Bridge (Road over Rail)
  - Level Crossing
  - Tunnel
  - Order Polygon

DC Asset Line



Order Ref: 134497  
 Plot Scale: 1:1250  
 Page Index: 1  
 Centre X, Y: 516358, 170671  
 Plot Date: 12/05/22

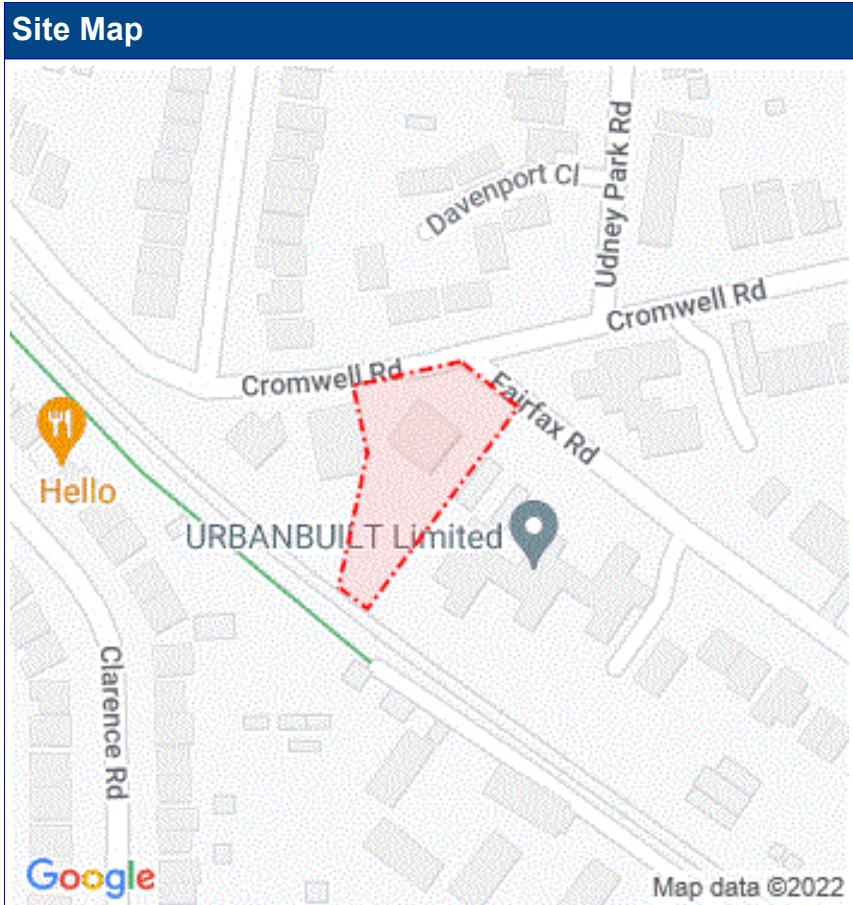


Crown copyright and database rights 2022  
 Ordnance Survey 0100040692

Enquirer			
Name	Mr Panagiotis Gourales	Phone	0203 598 3775
Company	Murphy Surveys UK	Mobile	Not Supplied
Address	39-41 North Road London Greater London N7 9DP		
Email	utility@murphysurveys.co.uk		

Enquiry Details			
Scheme/Reference	45746 Sheldon House		
Enquiry type	Planned Works	Work category	Planning Applications
Start date	16/05/2022	Work type	C2 Enquiry (Stat Undertakers only)
End date	17/05/2022	Site size	2170 metres square
Searched location	TW11 9EJ	Work type buffer*	25 metres
Confirmed location	00 51		
Site Contact Name	Not Supplied	Site Phone No	Not Supplied
Description of Works	Stats Application		

\* The WORK TYPE BUFFER is a distance added to your search area based on the Work type you have chosen.



## Asset Owners

**Terms and Conditions.** Please note that this enquiry is subject always to our standard terms and conditions available at [www.linesearchbeforeudig.co.uk](http://www.linesearchbeforeudig.co.uk) ("Terms of Use") and the disclaimer at the end of this document. Please note that in the event of any conflict or ambiguity between the terms of this Enquiry Confirmation and the Terms of Use, the Terms of Use shall take precedence.

**Notes.** Please ensure your contact details are correct and up to date on the system in case the LSBUD Members need to contact you.

**Validity and search criteria.** The results of this enquiry are based on the confirmed information you entered and are valid only as at the date of the enquiry. It is your responsibility to ensure that the Enquiry Details are correct, and LineSearchbeforeUdig accepts no responsibility for any errors or omissions in the Enquiry Details or any consequences thereof. LSBUD Members update their asset information on a regular basis so you are advised to consider this when undertaking any works. It is your responsibility to choose the period of time after which you need to resubmit any enquiry but the maximum time (after which your enquiry will no longer be dealt with by the LSBUD Helpdesk and LSBUD Members) is 28 days. If any details of the enquiry change, particularly including, but not limited to, the location of the work, then a further enquiry must be made.

**Asset Owners & Responses.** Please note the enquiry results include the following:

1. "LSBUD Members" who are asset owners who have registered their assets on the LSBUD service.
2. "Non LSBUD Members" are asset owners who have not registered their assets on the LSBUD service but LSBUD is aware of their existence. Please note that there could be other asset owners within your search area.

Below are three lists of asset owners:

1. **LSBUD Members who have assets registered within your search area. ("Affected")**
  - a. **These LSBUD Members will either:**
    - i. **Ask for further information ("Email Additional Info" noted in status). The additional information includes: Site contact name and number, Location plan, Detailed plan (minimum scale 1:2500), Cross sectional drawings (if available), Work Specification.**
    - ii. **Respond directly to you ("Await Response"). In this response they may either send plans directly to you or ask for further information before being able to do so, particularly if any payments or authorisations are required.**
2. **LSBUD Members who do not have assets registered within your search area. ("Not Affected")**
3. **Non LSBUD Members who may have assets within your search area. Please note that this list is not exhaustive and all details are provided as a guide only. It is your responsibility to identify and consult with all asset owners before proceeding.**

**LSBUD Members who have assets registered on the LSBUD service within the vicinity of your search area.**

### List of affected LSBUD members

Asset Owner	Phone/Email	Emergency Only	Status
SGN	08009121722	0800111999	Await response
UK Power Networks	08000565866	08000565866	Await response

**LSBUD Members who do not have assets registered on the LSBUD service within the vicinity of your search area. Please be aware that LSBUD Members make regular changes to their assets and this list may vary for new enquiries in the same area.**

### List of not affected LSBUD members

AWE Pipeline	Balfour Beatty Investments Limited	BOC Limited (A Member of the Linde Group)
Box Broadband	BP Exploration Operating Company Limited	BPA
Cadent Gas	Carrington Gas Pipeline	CATS Pipeline c/o Wood Group PSN
Cemex	Centrica Storage Ltd	CNG Services Ltd
Concept Solutions People Ltd	ConocoPhillips (UK) Teesside Operator Ltd	D.S.Smith
Diamond Transmission Corporation	DIO (MOD Abandoned Pipelines)	DIO (MOD Live Pipelines)
E.ON UK CHP Limited	EirGrid	Electricity North West Limited
Energy Assets Pipelines	ENI & Himor c/o Penspen Ltd	EnQuest NNS Limited
EP Langage Limited	ESP Utilities Group	ESSAR
Esso Petroleum Company Limited	euNetworks Fiber UK Ltd	EXA Infrastructure
Exolum Pipeline System	Fulcrum Pipelines Limited	Gamma
Gas Networks Ireland (UK)	Gateshead Energy Company	Gigaclear Ltd
Harbour Energy	Heathrow Airport LTD	Humbly Grove Energy
IGas Energy	INEOS FPS Pipelines	INEOS Manufacturing (Scotland and TSEP)
INOVYN ChlorVinyls Limited	INOVYN Enterprises Limited	Intergen (Coryton Energy or Spalding Energy)
Jurassic Fibre Ltd	Last Mile	Mainline Pipelines Limited
Manchester Jetline Limited	Manx Cable Company	Marchwood Power Ltd (Gas Pipeline)
Melbourn Solar Limited	Murphy Utility Assets	National Grid Electricity Transmission
National Grid Gas Transmission	Neos Networks	Northumbrian Water Group
NPower CHP Pipelines	NTT Global Data Centers EMEA UK Ltd	NYnet Ltd
Oikos Storage Limited	Ørsted	Palm Paper Ltd
Perenco UK Limited (Purbeck Southampton Pipeline)	Petroineos	Phillips 66
Portsmouth Water	Premier Transmission Ltd (SNIP)	Redundant Pipelines - LPDA
RWE - Great Yarmouth Pipeline (Bacton to Great Yarmouth Power Station)	RWEnpower (Little Barford and South Haven)	SABIC UK Petrochemicals
SAS Utility Services Ltd	Scottish and Southern Electricity Networks	Scottish Power Generation
Seabank Power Ltd	SES Water	Shell
Shell NOP	SP Energy Networks	Squire Energy Networks
SSE Generation Ltd	SSE Transmission	SSE Utility Solutions Limited
Tata Communications (c/o JSM Construction		



Ltd)	Total Colnbrook Pipelines	Total Finaline Pipelines
Transmission Capital	Uniper UK Ltd	University of Cambridge Granta Backbone Network
Vattenfall	Veolia ES SELCHP Limited	Veolia ES Sheffield Ltd
Voneus Limited	VPI Power Limited	Wales and West Utilities
West of Duddon Sands Transmission Ltd	Western Power Distribution	Westminster City Council
Zayo Group UK Ltd c/o JSM Group Ltd		

The following Non-LSBUD Members may have assets in your search area. It is **YOUR RESPONSIBILITY** to contact them before proceeding. Please be aware this list is not exhaustive and it is your responsibility to identify and contact all asset owners within your search area.

Non-LSBUD members (Asset owners not registered on LSBUD)			
Asset Owner	Preferred contact method	Phone	Status
BT	<a href="https://www.swns.bt.com/pls/mbe/welcome.home">https://www.swns.bt.com/pls/mbe/welcome.home</a>	08000232023	Not Notified
CityFibre	<a href="mailto:asset.team@cityfibre.com">asset.team@cityfibre.com</a>	033 3150 7282	Not Notified
Colt	<a href="mailto:plantenquiries@catelecomuk.com">plantenquiries@catelecomuk.com</a>	01227768427	Not Notified
ENGIE	<a href="mailto:nrswa.uk@engie.com">nrswa.uk@engie.com</a>	0800 130 3600	Not Notified
GTC	<a href="https://pe.gtc-uk.co.uk/PlantEnqMembership">https://pe.gtc-uk.co.uk/PlantEnqMembership</a>	01359240363	Not Notified
Lumen Technologies	<a href="mailto:plantenquiries@instalcom.co.uk">plantenquiries@instalcom.co.uk</a>	02087314613	Not Notified
Mobile Broadband Network Limited	<a href="mailto:mbnl.plant.enquiries@turntown.com">mbnl.plant.enquiries@turntown.com</a>	01212 621 100	Not Notified
Network Rail	<a href="mailto:OPBuriedServicesEnquiries@networkrail.co.uk">OPBuriedServicesEnquiries@networkrail.co.uk</a>	01904523401	Not Notified
Richmond upon Thames London Borough Council	<a href="mailto:trafficandengineering@richmond.gov.uk">trafficandengineering@richmond.gov.uk</a>	08456122660	Not Notified
Sky UK Limited	<a href="mailto:nrswa@sky.uk">nrswa@sky.uk</a>	02070323234	Not Notified
Sota	<a href="mailto:SOTA.plantenquiries@instalcom.co.uk">SOTA.plantenquiries@instalcom.co.uk</a>		Not Notified
Thames Water	<a href="http://www.digdat.co.uk">http://www.digdat.co.uk</a>	08450709145	Not Notified
Utility assets Ltd	<a href="mailto:assetrecords@utilityassets.co.uk">assetrecords@utilityassets.co.uk</a>		Not Notified
Verizon Business	<a href="mailto:osp-team@uk.verizonbusiness.com">osp-team@uk.verizonbusiness.com</a>	01293611736	Not Notified
Virgin Media	<a href="http://www.digdat.co.uk">http://www.digdat.co.uk</a>	08708883116	Not Notified
Vodafone	<a href="mailto:osm.enquiries@atkinsglobal.com">osm.enquiries@atkinsglobal.com</a>	01454662881	Not Notified

#### Disclaimer

Please refer to LineSearchbeforeUdig's Terms of Use for full terms of use available at [www.linesearchbeforeudig.co.uk](http://www.linesearchbeforeudig.co.uk)

The results of this Enquiry are personal to the Enquirer and shall not be shared with or relied upon by any other party. The asset information on which the Enquiry results are based has been provided by LSBUD Members, therefore LineSearchbeforeUdig will provide no guarantee that such information is accurate or reliable nor does it monitor such asset information for accuracy and reliability going forward. There may also be asset owners which do not participate in the enquiry service operated by LineSearchbeforeUdig, including but not exclusively those set out above. Therefore, LineSearchbeforeUdig cannot make any representation or give any guarantee or warranty as to the completeness of the information contained in the enquiry results or accept any responsibility for the accuracy of the mapping images used. LineSearchbeforeUdig and its employees, agents and consultants accept no liability (save that nothing in this Enquiry Confirmation excludes or limits our liability for death or personal injury arising from our negligence, or our fraud or fraudulent misrepresentation, or any other liability that cannot be excluded or limited by English law) arising in respect thereof or in any other way for errors or omissions including responsibility to any person by reason of negligence.

## **Palmira Titeva**

---

**From:** assetrecords@utilityassets.co.uk  
**Sent:** 18 May 2022 14:37  
**To:** Palmira Titeva  
**Subject:** Re: URGENT - 45746 Â· Sheldon House - C2 Application

Thank you for recently contacting Utility Assets plant record department. We will check whether we have any plant present at your site and contact you within 5 - 7 working days ONLY if we own any plant in the vicinity.

If you have sent an asset records enquiry to enquiries@utilityassets.co.uk please change to assetrecords@utilityassets.co.uk

If we do not reply, we do not have any apparatus in the area of your works. However, PLEASE TAKE CARE when excavating around electricity cables in the event that not all cables present may be accurately shown. We recommend you use detecting equipment to map the site before excavating and fully comply with HSG47. DO NOT assume that a cable is dead if you don't have a record of its presence. The cable must be treated as live unless PROVEN DEAD by the cable owner. In case of emergency please contact your local electricity distribution company.

This is an automated reply from our dedicated asset records email address. If you receive further correspondence from us it will be from asset.manager@utilityassets.co.uk quoting a site reference number.

Asset Manager - Utility Assets Ltd

## Palmira Titeva

---

**From:** UK OSP-Team <osp-team@intl.verizon.com>  
**Sent:** 13 May 2022 09:38  
**To:** Palmira Titeva  
**Cc:** UK OSP-Team  
**Subject:** RE: URGENT - 45746 · Sheldon House - C2 Application

**Follow Up Flag:** Follow up  
**Flag Status:** Flagged

Dear Sir/Madam

Verizon is a licensed Statutory Undertaker.

We have reviewed your plans and have determined that Verizon (Formally known as MCI WorldCom, MFS) has no apparatus in the areas concerned.

If you have any further queries please do not hesitate to get in touch.

Yours faithfully

Plant Protection Officer (GB) Email [osp-team@uk.verizon.com](mailto:osp-team@uk.verizon.com)

---

**From:** Palmira Titeva [mailto:ptiteva@murphygs.com]  
**Sent:** 12 May 2022 10:40  
**To:** Palmira Titeva <ptiteva@murphygs.com>  
**Subject:** URGENT - 45746 · Sheldon House - C2 Application  
**Importance:** High

Dear Sir/Madam,

I would like to enquire about your plants for the site below highlighted in red.  
Please see below the site information.

**Planned Works:** Utility Survey 16/05/2022  
**Address:** Sheldon House, Cromwell Road, Teddington TW11 9EJ  
**OS Coordinates:** 516258, 170603  
**Map:** <https://www.google.com/maps/@51.4229092,-0.329906,18.56z>

## Palmira Titeva

---

**From:** Murthy, Srinivasa <Srinivasa.Murthy@atkinsglobal.com>  
**Sent:** 17 May 2022 11:16  
**To:** Palmira Titeva  
**Subject:** RE: URGENT - 45746 · Sheldon House - C2 Application

**Follow Up Flag:** Follow up  
**Flag Status:** Flagged

Please accept this email as confirmation that Vodafone: Fixed **does not** have apparatus within the vicinity of your proposed works detailed below.

Please note that according to our records there is leased and/or third party network within your proposed works. However, because the plant is leased/third party we do not hold 'As Built' records. We strongly recommend you contact all other utility providers to gather the extent of services within that area. Unfortunately, we are unable to advise who the plant is leased to or who the third party is.

### **IMPORTANT - PLEASE READ = Your Next Step?:-**

Where apparatus is affected and requires diversion, please send all the scheme related proposals that affects the Vodafone Network to [c3requests@vodafone.com](mailto:c3requests@vodafone.com) with a request for a 'C3 Budget Estimate'. Please ensure you include a plan showing proposed works. (A location plan is insufficient for Vodafone to provide a costing). These estimates will be provided by Vodafone directly, normally within 20 working days from receipt of your request. Please include proof of this C2 response when requesting a C3 (using the 'forward' option). Diversionary works may be necessary if the existing line of the highway/railway or its levels are altered.

**If you require a quote for new development, commercial site connections – please email your requirements and associated plans to [c3requests@vodafone.com](mailto:c3requests@vodafone.com) and a budget estimate will be returned within 10 working days of receipt**

Plant Enquiries Team  
T: 01454 662881  
E: [osm.enquiries@atkinsglobal.com](mailto:osm.enquiries@atkinsglobal.com)

**ATKINS** working on behalf of Vodafone: Fixed

**This response is made only in respect to electronic communications apparatus forming part of the Vodafone Limited electronic communications network formerly being part of the electronic communications networks of Cable & Wireless UK, Energis Communications Limited, Thus Group Holdings Plc and Your Communications Limited.**

**PLEASE NOTE:** The information given is indicative only. No warranty is made as to its accuracy. This information must not be solely relied upon in the event of excavation or other works carried out in the vicinity of Vodafone plant. No liability of any kind whatsoever is accepted by Vodafone, its servants, or agents, for any error or omission in respect of information contained on this information. The actual position of underground services must be verified and established on site before any mechanical plant is used. Authorities and contractors will be held liable for the full cost of repairs to Vodafone's apparatus and all claims made against them by Third parties as a result of any interference or damage.

## Palmira Titeva

---

**From:** Plantenquiries <Plantenquiries@instalcom.co.uk>  
**Sent:** 12 May 2022 12:24  
**To:** Palmira Titeva  
**Subject:** E05-22-2881 RE: URGENT - 45746 · Sheldon House - C2 Application

**Follow Up Flag:** Follow up  
**Flag Status:** Flagged

Dear Sir or Madam,

Thank you for your plant enquiry below.

We can confirm that Lumen Technologies (formerly CenturyLink Communications UK Limited, Level 3, Global Crossing (UK) Ltd, Global Crossing PEC, Fibernet UK Ltd and Fibrespan Ltd) do not have any apparatus within the indicated works area.

Instalcom responds to plant enquiries for all of the above and therefore you only need send one plant enquiry to cover all of these companies.

**Please note that this response is only valid for 3 months. If your works do not commence within this time period, please resubmit your plant enquiry for assessment before any works commence.**

Regards

Plant Enquiries Dept  
Instalcom Limited  
Borehamwood Ind. Park  
Rowley Lane  
Borehamwood  
WD6 5PZ

Office: +44 (0)208 731 4613

Fax: +44 (0)208 731 4601

Email: [plantenquiries@instalcom.co.uk](mailto:plantenquiries@instalcom.co.uk)

Web: <http://www.instalcom.co.uk>



## Palmira Titeva

---

**From:** SOTA Plant Enquiries <SOTA.PlantEnquiries@instalcom.co.uk>  
**Sent:** 12 May 2022 10:59  
**To:** Palmira Titeva  
**Subject:** RE: S05-22- 0943 URGENT - 45746 · Sheldon House - C2 Application

**Follow Up Flag:** Follow up  
**Flag Status:** Flagged



Dear Sir or Madam,

With reference to your plant enquiry below, we can confirm that SOTA do not have any apparatus within the immediate proximity of your proposed works.

If you require any further information, please do not hesitate to contact us.

**Please note that this response is only valid for 3 months. If your works do not commence within this time period, please resubmit your plant enquiry for assessment before any works commence.**

Regards

Plant Enquiries Dept.  
Instalcom Limited  
Borehamwood Ind. Park  
Rowley Lane  
Borehamwood  
WD6 5PZ

Office: +44 (0)208 731 4613  
Fax: +44 (0)208 731 4601  
Email: [sota.plantenquiries@instalcom.co.uk](mailto:sota.plantenquiries@instalcom.co.uk)  
Web: <http://www.instalcom.co.uk>



## **Palmira Titeva**

---

**From:** plantenquiryservice@gtc-uk.co.uk  
**Sent:** 12 May 2022 10:35  
**To:** Utility  
**Subject:** GTC Plant Enquiry - Ref- 2506294  
**Attachments:** 2506294.png

**Follow Up Flag:** Follow up  
**Flag Status:** Flagged

### **GTC Apparatus Not Found In Search Area**

**Our Plant Enquiry Service Ref: 2506294**  
**Your Enquiry Ref: 45746 Sheldon House**

Dear Palmira,

Thank you for your enquiry concerning apparatus in the vicinity of your proposed work. GTC can confirm that we have no apparatus in the vicinity but please note that other asset owners may have and ensure all utility owners have been consulted. For your records, the search area is shown in the attached map.

Please note our assets now include those owned and operated by:

- GTC Pipelines Limited
- Independent Pipelines Limited
- Quadrant Pipelines Limited
- Electricity Network Company Limited
- Independent Power Networks Limited
- Independent Water Networks Limited
- Open Fibre Networks Limited
- Independent Community Heating Limited

If you have any queries or require any further information please do not hesitate to contact us.

**Your sincerely,**

GTC Plant Enquiry Service.

GTC  
Synergy House  
Woolpit Business Park  
Woolpit  
Bury St Edmunds  
Suffolk, IP30 9UP  
Tel: 01359 240363  
plant.enquiries@gtc-uk.co.uk



## Palmira Titeva

---

**From:** NRSWA <nrswa.nrswa@sky.uk>  
**Sent:** 12 May 2022 11:32  
**To:** Palmira Titeva  
**Subject:** URGENT - 45746 · Sheldon House - C2 Application

**Follow Up Flag:** Follow up  
**Flag Status:** Flagged



Thank you for your enquiry.

Please be advised that Sky Telecommunications Services Ltd will not be affected by your proposal.

Best endeavours have been made to ensure accuracy, however if you require further information, please contact us by email at [nrswa@sky.uk](mailto:nrswa@sky.uk).

Regards



NRSWA Department  
Sky UK - Technology - Operations

 [nrswa@sky.uk](mailto:nrswa@sky.uk)  +44 2070323234

---

**From:** Palmira Titeva <ptiteva@murphygs.com>  
**Sent:** 12 May 2022 10:40  
**To:** Palmira Titeva <ptiteva@murphygs.com>  
**Subject:** [EXTERNAL] URGENT - 45746 · Sheldon House - C2 Application  
**Importance:** High

Dear Sir/Madam,

I would like to enquire about your plants for the site below highlighted in red.

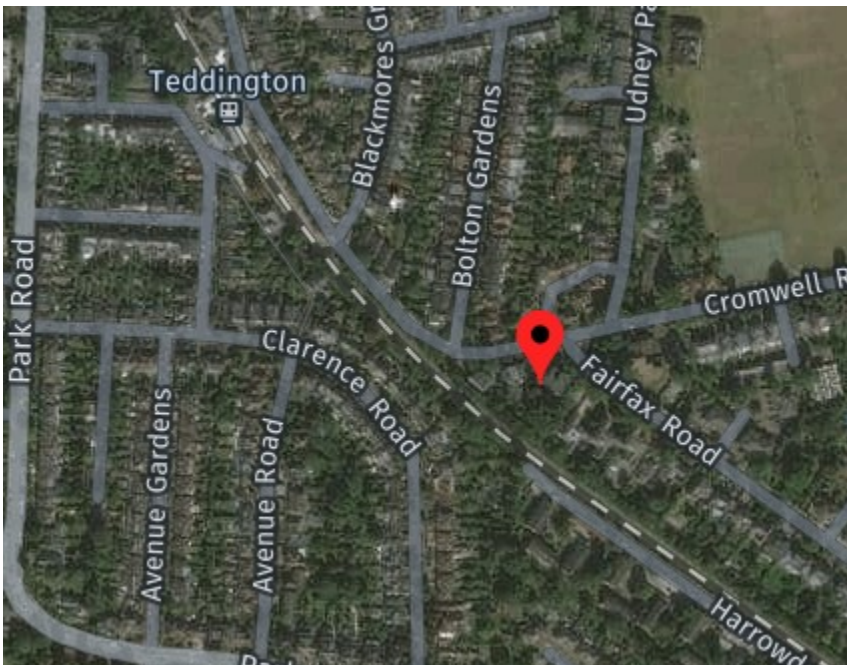
## Palmira Titeva

---

**From:** MBNLplantenquiries <mbnl.plant.enquiries@turntown.com>  
**Sent:** 12 May 2022 14:21  
**To:** Palmira Titeva  
**Subject:** RE: URGENT - 45746 · Sheldon House - C2 Application

**Follow Up Flag:** Follow up  
**Flag Status:** Flagged

Confidential - External



Dear Sir/Madam

Turner & Townsend Project Management are appointed on behalf of MBNL to conduct Plant (apparatus) Searches in accordance with the relevant NRSWA Act 1991- Diversionary Works legislation. These searches considered plant belonging to EE (T-Mobile and Orange sites) and the HG3 mobile telecommunication networks.

MBNL do not have any plant that would be affected by the proposed work. Should you have any further queries please use the contact details below.

Thank you,

Kind regards,

MBNL SHQE Team

t: 0121 262 3663 |



Health & Safety Team of the Year 2019

## Palmira Titeva

---

**From:** Plantenquiries - CA Telecom <plantenquiries@catelecomuk.com>  
**Sent:** 23 May 2022 10:51  
**To:** Palmira Titeva  
**Subject:** RE: URGENT - 45746 · Sheldon House - C2 Application

**Follow Up Flag:** Follow up  
**Flag Status:** Flagged

**Please Note: Our search criteria has changed. We previously searched for Colt Network which was within 200 metres, this has now changed to 50 metres. The negative response will be for all enquiries that the network is 50 metres or more away from the place of enquiry.**

Dear Sir/Madam,

Thank you for your enquiry for the above reference.

We can confirm that Colt Technology Services do not have apparatus near the above location as presented on your submitted plan, if any development or scheme amendments fall outside the 50 metre perimeter new plans must be submitted for review.

Search is based on Overseeing Organisation Agent data supplied; we do not accept responsibility for O.O. Agent inaccurate data.

If we can be of any further assistance please do not hesitate to contact us.

Kind regards,

**Plant Enquiry Team**



**Please consider the environment before printing this email.**

*This e-mail and any files transmitted with it are confidential and are intended solely for the use of the intended recipient(s). If you are not the intended recipient, you must not copy, distribute or take any action based on this communication. If you have received this communication in error please contact [plantenquiries@catelecomuk.com](mailto:plantenquiries@catelecomuk.com) and delete this communication and any copies of it. Any views or opinions presented are solely those of the author and do not necessarily represent those of C A Telecom LTD. C A Telecom LTD monitors e-mails to ensure that its systems operate effectively and to minimise the risk of viruses.*



**Murphy**  
GEOSPATIAL



UK Head Office  
39–41 North Road  
London  
N7 9DP

[murphygs.com](http://murphygs.com)