

| LEGEND  |                             |                                   |                   |             |  |
|---|-----------------------------|-----------------------------------|-------------------|-------------|--|
| Utility Survey Point Features                         |                             |                                   |                   |             |  |
| FH  | Fire Hydrant                | IC - Electric                     |                   |             |  |
| GV  | Gas Valve                   | IC - Round                        |                   |             |  |
| G   | Gully                       | IC - Telecom                      |                   |             |  |
| GR  | Gully Round                 | IC - Traffic                      |                   |             |  |
| IC  | Inspection Cover            | IC - CATV                         |                   |             |  |
| IC - C  | IC - Comms                  | Manhole                           |                   |             |  |
| MHF   | MH - Foul                   | MH - Round                        |                   |             |  |
| MH  | MH - Round                  | MH - Surface Water                |                   |             |  |
| MHS   | MH - Surface Water          | Stop Cock                         |                   |             |  |
| WM  | Water Meter                 | Water Valve                       |                   |             |  |
| WV  | Water Valve                 |                                   |                   |             |  |
| Utility Survey Linework Features                      |                             |                                   |                   |             |  |
| BT  | British Telecom             | Electrical Service                |                   |             |  |
| CATV  | Cable TV                    | Electrical Earth                  |                   |             |  |
| CCCTV   | Closed Circuit TV           | Electrical - Low Volt             |                   |             |  |
| COM   | Communications              | Electrical - High Volt            |                   |             |  |
| FOL   | Fibre Optic Line            | Electrical - Extra High Volt      |                   |             |  |
| FOLC  | Fibre Optic Line - Coft     | Electrical - TFL                  |                   |             |  |
| FOLC  | Fibre Optic Line - Energis  | Street Lighting                   |                   |             |  |
| FOLC  | Fibre Optic Line - Fibernet | TCSU                              |                   |             |  |
| FOLC  | Fibre Optic Line - Level 3  | Gas Service                       |                   |             |  |
| FOLM  | Fibre Optic Line - Mercury  | Gas Low Pressure                  |                   |             |  |
| FOLMF   | Fibre Optic Line - MFSC     | Gas Intermediate Pressure         |                   |             |  |
| FOLT  | Fibre Optic Line - Tinet    | Gas Medium Pressure               |                   |             |  |
| FOLV  | Fibre Optic Line - Virgin   | Gas High Pressure                 |                   |             |  |
| FOLV  | Fibre Optic Line - Vodafone | GPR - Unknown                     |                   |             |  |
| FOLW  | Fibre Optic Line - Verizon  | GPR - Anomaly                     |                   |             |  |
| FOLW  | Fibre Optic Line - WCOM     | Unknown Asset                     |                   |             |  |
| TS  | Telecom Service             | UA Passive Sweep                  |                   |             |  |
|   |                             | Unknown Cable                     |                   |             |  |
|   |                             | GPR Site                          |                   |             |  |
|   |                             | GPR Survey Area                   |                   |             |  |
|   |                             | Other                             |                   |             |  |
|   |                             | Manhole Chamber                   |                   |             |  |
|   |                             | Manhole ID                        |                   |             |  |
|   |                             | Pot End                           |                   |             |  |
|   |                             | XX (AS) - Assumed Service         |                   |             |  |
|   |                             | Scope of Works                    |                   |             |  |
| PAS128 Quality Levels                                 |                             |                                   |                   |             |  |
| (Consult document 'PAS128:2014.pdf' for full details) |                             |                                   |                   |             |  |
| XX - A  | Quality Level A             | XX - B3                           |                   |             |  |
| XX - B1   | Quality Level B1            | XX - B3P                          |                   |             |  |
| XX - B1P  | Quality Level B1P           | XX - B4                           |                   |             |  |
| XX - B2   | Quality Level B2            | XX - C                            |                   |             |  |
| XX - B2P  | Quality Level B2P           | XX - D                            |                   |             |  |
| XX - B3   | Quality Level B3            | XX - B3P                          |                   |             |  |
| XX - B4   | Quality Level B4            | XX - C                            |                   |             |  |
| XX - C  | Quality Level C             | XX - D                            |                   |             |  |
| XX - D  | Quality Level D             |                                   |                   |             |  |
| Special Survey Features                               |                             |                                   |                   |             |  |
| DATUM   | Datum Point                 | E=XXXXXXX<br>N=YYYYYYY<br>H=ZZZZZ |                   |             |  |
| 12.24   | Photo Point                 | E=XXXXXXX<br>N=YYYYYYY<br>H=ZZZZZ |                   |             |  |
| 12.24   | Panoramic Photo Point       | E=XXXXXXX<br>N=YYYYYYY<br>H=ZZZZZ |                   |             |  |
|   |                             | Scan Target                       |                   |             |  |
| Utility Survey Abbreviations                          |                             |                                   |                   |             |  |
| AB  | Abandoned                   | FLO                               | Flooded           | TFR         | Taken From Records                     |
| BLD   | Blocked                     | IL                                | Invert Level      | UTO         | Unable to Open                         |
| CL  | Cover Level                 | NT                                | No Trace          | UTS         | Unable to Survey                       |
| CUT   | Disconnected Utility        | OE                                | Overhead Electric | UNK/Unknown | Unknown                                |
| EOG   | End of GPR Signal           | OT                                | Overhead Telecom  | WL          | Water Level                            |
| EOT   | End of Trace                | P                                 | Pilot             | XXd         | Service Depth - Grid to Top of Service |
| FOS   | Full of Soil                | SOF                               | Soft Level        |             |  |
| Utility Material Abbreviations                        |                             |                                   |                   |             |  |
| AC  | Asbestos Cement             | CC                                | Concrete Chamber  | SI          | Spun Iron                              |
| BC  | Brick Chamber               | DI                                | Ductile Iron      | ST          | Steel                                  |
| CI  | Cast Iron                   | PE                                | Polyethylene      | WTR         | Water                                  |

**Murphy Geospatial Disclaimer**

All reasonable endeavours have been used to capture the required data in the survey to the agreed standards of accuracy. Where features have been distributed due to a lack of access, the areas will be annotated as 'UTS' (Unable To Survey). The Company shall not be liable for any damages or consequential losses arising from the reliance on survey information beyond its specified scale and accuracy, or survey information used for purposes other than that stated in the Contract of Works.

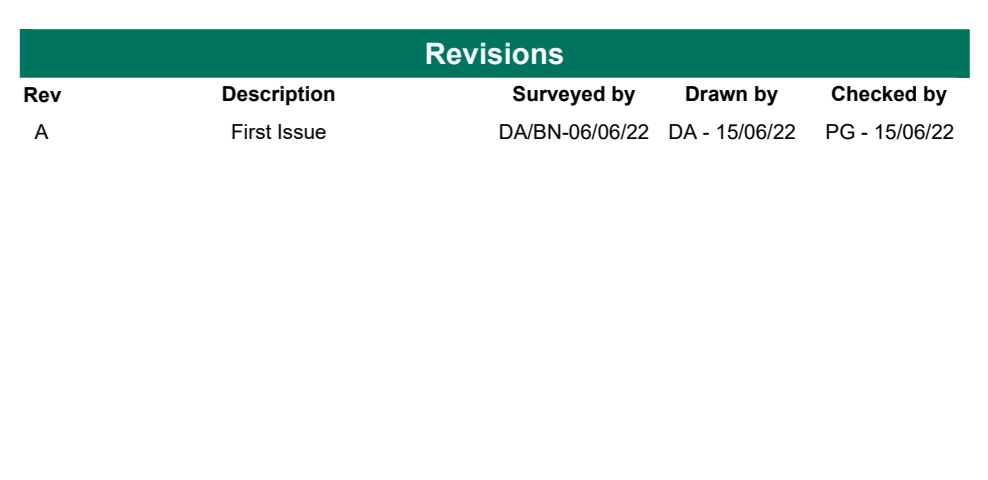
Any concerns with the survey should be raised with Murphy Geospatial, who will endeavour to promptly provide a remedy. The Client shall not seek recourse through any third party until such time as Murphy Geospatial have had the opportunity to address any concerns raised.

For full terms and conditions visit [www.murphygs.com](http://www.murphygs.com)

**Location Plan**

**Revisions**

| Rev | Description | Surveyed by    | Drawn by      | Checked by    |
|-----|-------------|----------------|---------------|---------------|
| A   | Final Issue | DA/BN-06/06/22 | DA - 15/06/22 | PG - 15/06/22 |



Geospatial certainty you can trust [murphygs.com](http://murphygs.com)

**UK Head Office**  
 39-41 North Road  
 London  
 N7 9DP  
 Phone: (+44) 0203 598 3775  
 Email: [info@murphygs.com](mailto:info@murphygs.com)

London Manchester Glasgow Belfast Cork Kildare

|                |  |
|----------------|--|
| Client         | Airey Miller   |
| Project        | 2021/044 - Sheldon House                               |
| Site Address   | Sheldon House, Cromwell Road<br>Teddington<br>TW11 9EJ |
| Description    | Underground Utility Survey(PAS128)                     |
| Survey Grid    | Localised OSGB36(15) - Scale Factor 1.0                |
| Survey Datum   | GNSS - Ordnance Datum Newlyn (ODN)                     |
| RICS Band      | Band E   |
| Drawing Scale  | 1:100 @ A0   |
| Drawing Number | MGS45746-U-Ukn&GPR-01                                  |

© Copyright 2022 MURPHY GEOSPATIAL

**PLEASE NOTE:**  
 Background for reference only.