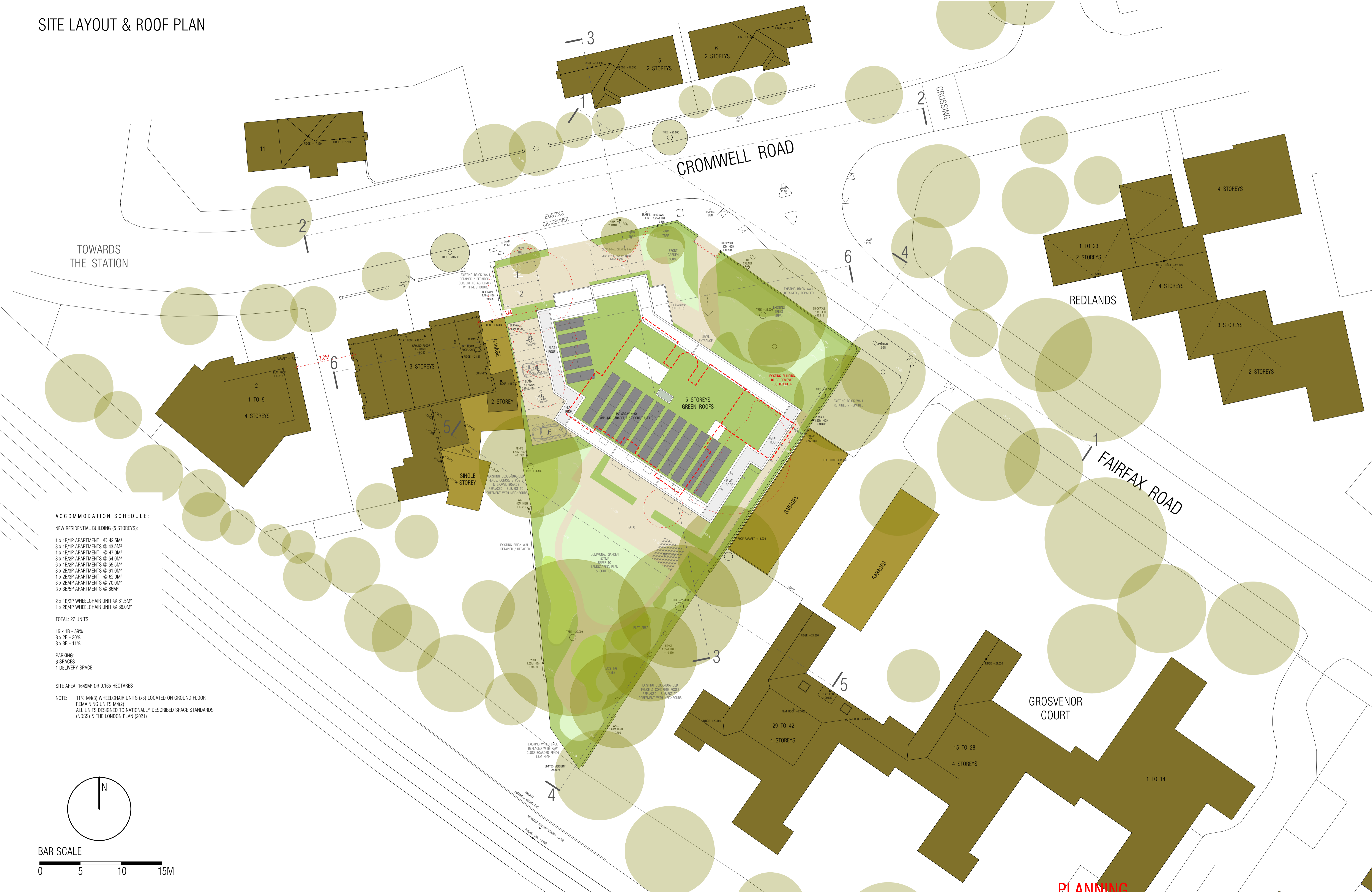


SITE LAYOUT & ROOF PLAN



ACCOMMODATION SCHEDULE:

NEW RESIDENTIAL BUILDING (5 STOREYS):

- 1 x 1B/1P APARTMENT @ 42.5M²
- 3 x 1B/1P APARTMENTS @ 43.5M²
- 1 x 1B/1P APARTMENT @ 47.0M²
- 3 x 1B/2P APARTMENTS @ 54.0M²
- 6 x 1B/2P APARTMENTS @ 55.5M²
- 3 x 2B/3P APARTMENTS @ 61.0M²
- 1 x 2B/3P APARTMENT @ 62.0M²
- 3 x 2B/4P APARTMENTS @ 70.0M²
- 3 x 3B/5P APARTMENTS @ 86M²

- 2 x 1B/2P WHEELCHAIR UNIT @ 61.5M²
- 1 x 2B/4P WHEELCHAIR UNIT @ 86.0M²

TOTAL: 27 UNITS

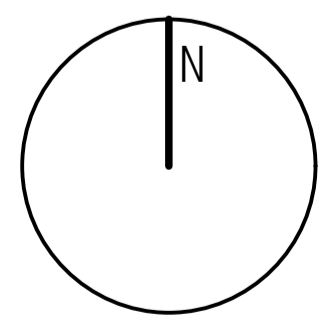
- 16 x 1B - 59%
- 8 x 2B - 30%
- 3 x 3B - 11%

PARKING:

- 6 SPACES
- 1 DELIVERY SPACE

SITE AREA: 1649M² OR 0.165 HECTARES

- NOTE: 11% M4(3) WHEELCHAIR UNITS (x3) LOCATED ON GROUND FLOOR
REMAINING UNITS M4(2)
ALL UNITS DESIGNED TO NATIONALLY DESCRIBED SPACE STANDARDS (NDSS) & THE LONDON PLAN (2021)



BAR SCALE



© CLIVE CHAPMAN ARCHITECTS. SURVEY INFORMATION IS USED UNDER SEPARATE COPYRIGHT LICENCE. REFER TO EXISTING SURVEY DRAWINGS / TITLE BLOCK FOR SURVEYORS DETAILS.

Revisions

PLANNING

Project
SHELDON HOUSE, 8 CROMWELL ROAD, TEDDINGTON TW11 9EJ

Drawing
SITE LAYOUT & ROOF PLAN

Drawing No. SH-02	Scale 1:200 @ A1	Date 22.02.2023
----------------------	---------------------	--------------------

CLIVE CHAPMAN
ARCHITECTS
SUSTAINABILITY CONSULTANTS
4 BEL FLEISLAND
TWICKENHAM MIDDY
TW1 3DY
TELEPHONE 020 8591 4837
EMAIL: INFO@CCAR.CO.UK
WEBSITE: WWW.CCAR.CO.UK