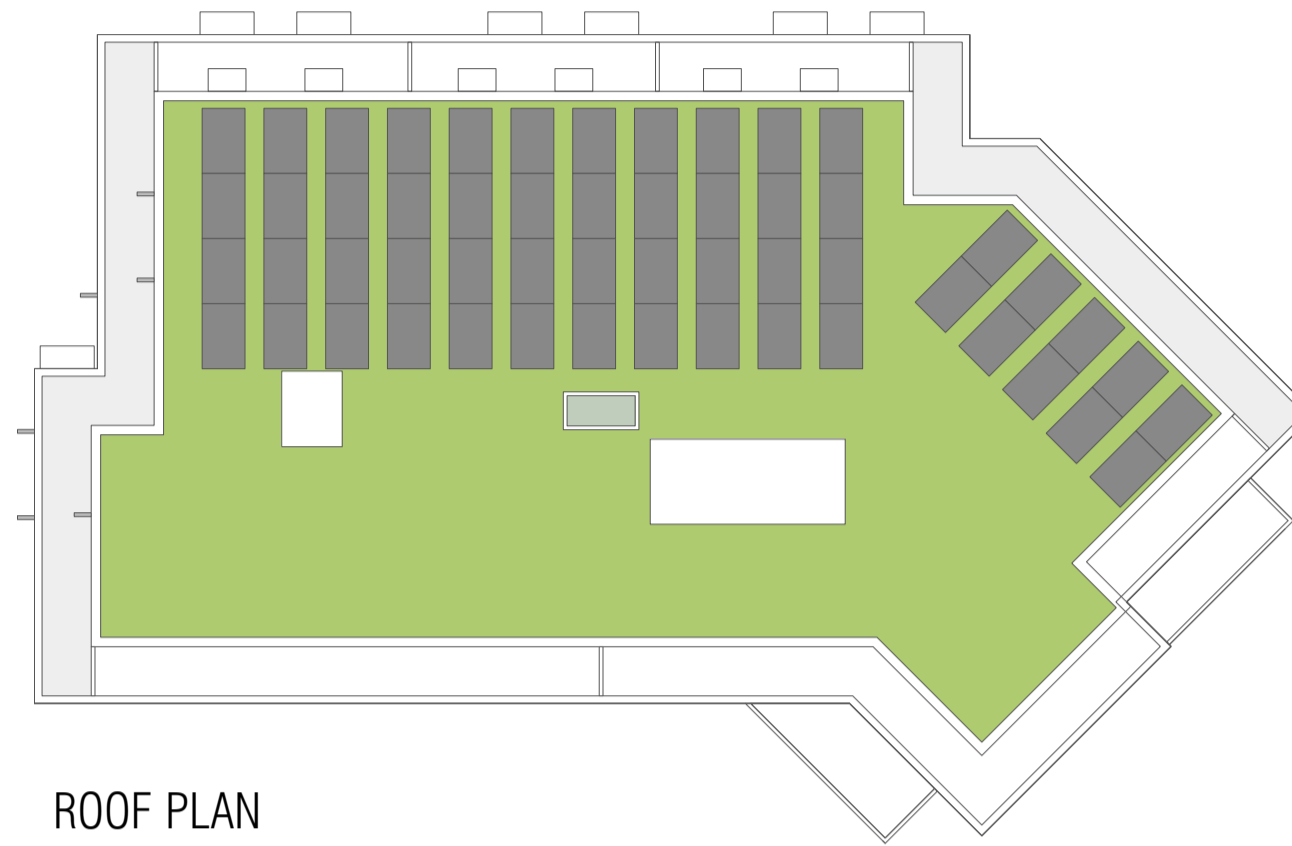


# FLOOR PLANS & ROOF PLAN



SECOND FLOOR PLAN



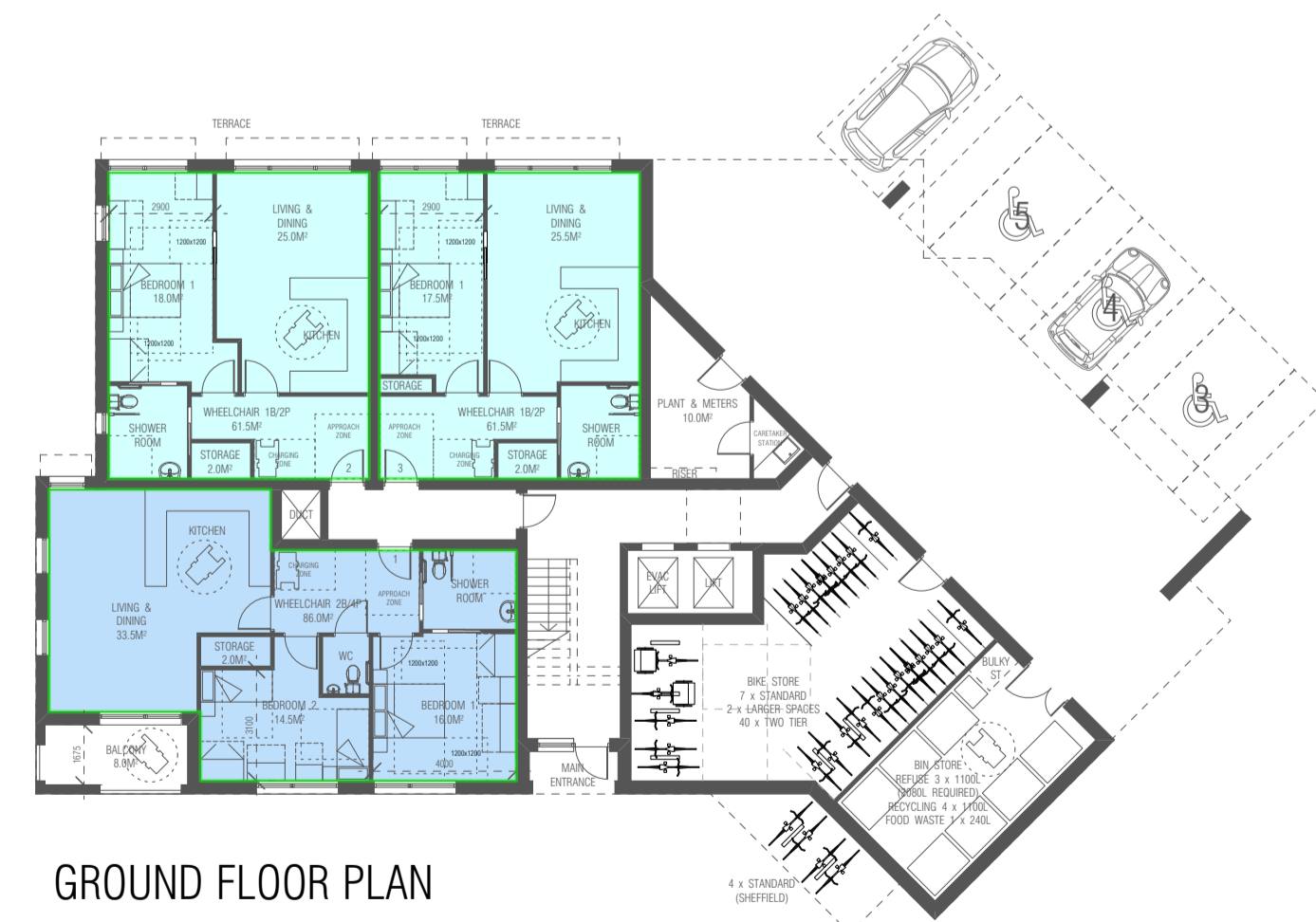
ROOF PLAN



FIRST FLOOR PLAN



FOURTH FLOOR PLAN



GROUND FLOOR PLAN



THIRD FLOOR PLAN

## ACCOMMODATION SCHEDULE:

### NEW RESIDENTIAL BUILDING (5 STOREYS):

- 1 x 1B/1P APARTMENT @ 42.5M<sup>2</sup>
- 3 x 1B/1P APARTMENTS @ 43.5M<sup>2</sup>
- 1 x 1B/1P APARTMENT @ 47.0M<sup>2</sup>
- 3 x 1B/2P APARTMENTS @ 54.0M<sup>2</sup>
- 6 x 1B/2P APARTMENTS @ 55.5M<sup>2</sup>
- 3 x 2B/3P APARTMENTS @ 61.0M<sup>2</sup>
- 1 x 2B/3P APARTMENT @ 62.0M<sup>2</sup>
- 3 x 2B/4P APARTMENTS @ 70.0M<sup>2</sup>
- 3 x 3B/5P APARTMENTS @ 86M<sup>2</sup>

- 2 x 1B/2P WHEELCHAIR UNIT @ 61.5M<sup>2</sup>
- 1 x 2B/4P WHEELCHAIR UNIT @ 86.0M<sup>2</sup>

TOTAL: 27 UNITS

- 16 x 1B - 59%
- 8 x 2B - 30%
- 3 x 3B - 11%

PARKING:  
6 SPACES  
1 DELIVERY SPACE

SITE AREA: 1649M<sup>2</sup> OR 0.165 HECTARES

NOTE: 11% M4(3) WHEELCHAIR UNITS (x3) LOCATED ON GROUND FLOOR  
REMAINING UNITS M4(2)  
ALL UNITS DESIGNED TO NATIONALLY DESCRIBED SPACE STANDARDS  
(NDSS) & THE LONDON PLAN (2021)

## ACCOMMODATION KEY:

- 1B / 1P APARTMENTS
- 1B / 2P APARTMENTS
- 2B / 3P & 4P APARTMENTS
- 3B / 5P APARTMENTS
- WHEELCHAIR APARTMENTS

