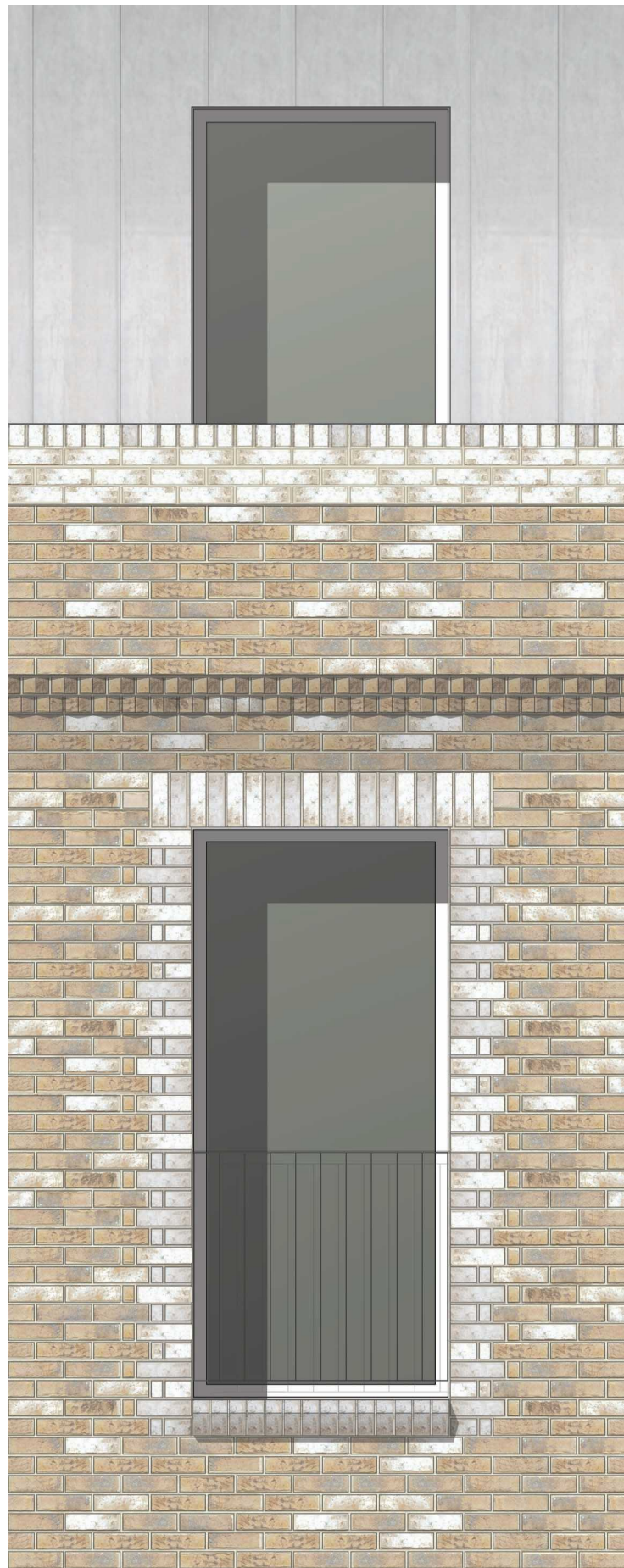


FACADE DETAIL 1:25



NATURAL ZINC
STANDING SEAM ROOF

WHITE BRICK HEADER COURSE
& WHITE BRICK STRETCHER
COURSES TO PARAPET TOP

KINGSTON WEATHERED GAULT
FACING BRICK

DOGTOTH BRICK DETAIL
RECESSED BRICK BANDING

WHITE BRICK WINDOW SURROUND
FOLLOWING HISTORIC / LOCAL
FAIRFAX ROAD DETAIL -
THOUGH DIFFERENT COLOUR SCHEME

WHITE BRICK SUBSIL



BRICK WINDOW SURROUND
HISTORIC / LOCAL
FAIRFAX ROAD DETAIL

PLANNING

Revisions

Project
SHELDON HOUSE, 8 CROMWELL ROAD, TEDDINGTON TW11 9EJ

Drawing
FACADE DETAIL

Drawing No.
SH-08

Scale
1:25 @ A3

Date
30.09.22

CLIVE CHAPMAN
ARCHITECTS
SUSTAINABILITY CONSULTANTS
4 EEL PIE ISLAND
TWICKENHAM MIDDX
TW1 3DY
TELEPHONE 020 8891 4837
EMAIL INFO@CCAR.CO.UK
WEBSITE WWW.CCAR.CO.UK