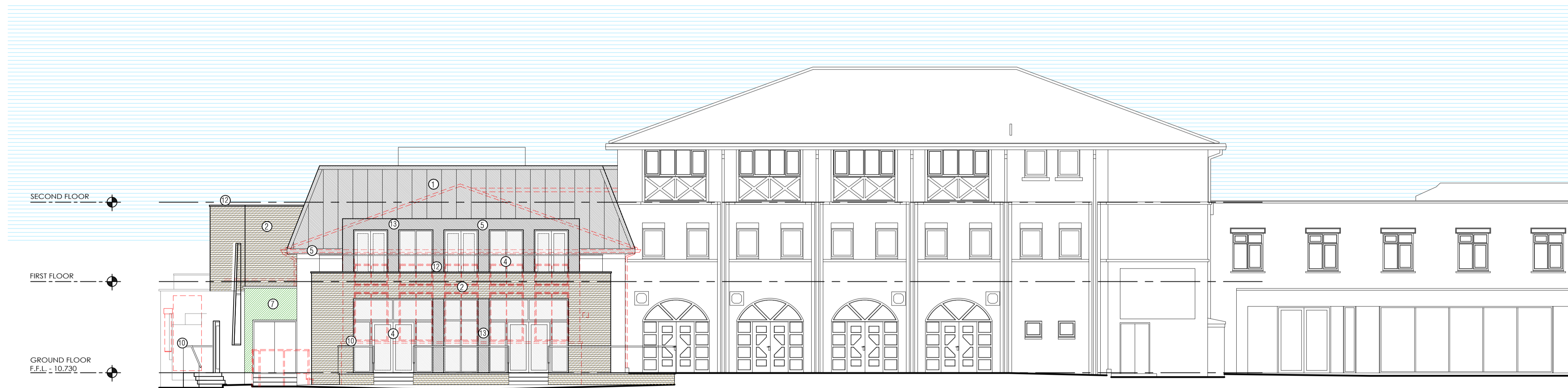
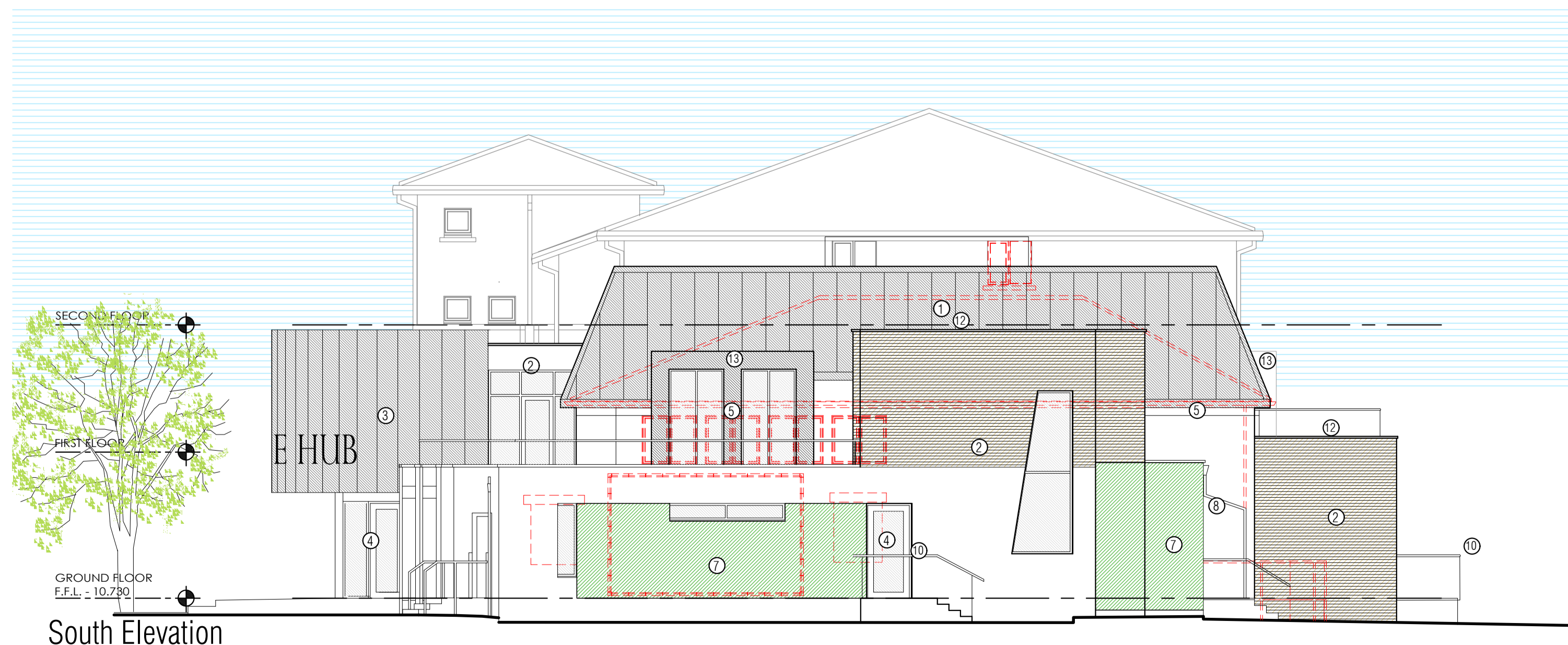




West Elevation



East Elevation

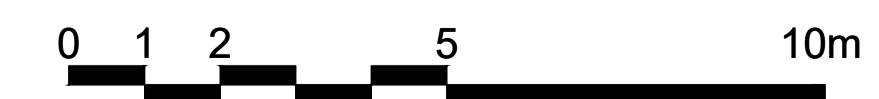


South Elevation

MATERIAL/FINISH KEY

- ① Rheinzink roof
- ② Facing brickwork to match existing
- ③ Rheinzink cladding
- ④ PPC aluminium windows & doors Colour grey
- ⑤ PPC fascia & verge. Colour grey
- ⑥ PPC aluminium windows & doors Colour grey
- ⑦ Green living wall
- ⑧ PPC aluminium RWP's
- ⑨ Rooflight
- ⑩ Stainless steel handrail with glass balustrade
- ⑪ Solar Panels
- ⑫ Stone coping.
- ⑬ Cladding Panels, Colour: Dark Grey.

1:100 Scale



Robothams Architects
The Old Library
12 Church Street
Warwick CV34 4AB
T 01926 493843
F 01926 495314
architects@robothams.co.uk
www.robothams.co.uk



PROJECT TITLE

STUDENT HEART PROJECT
PHASE II REFURBISHMENT
ST MARY'S UNIVERSITY

DRAWING TITLE

PROPOSED ELEVATIONS

STATUS **PLANNING**

SCALE	1:100	SHEET SIZE	A1	DRAWN	EW
DATE	February 2023	CHECKED	AH		
DWG NO.	4307-112	REVISION	-		