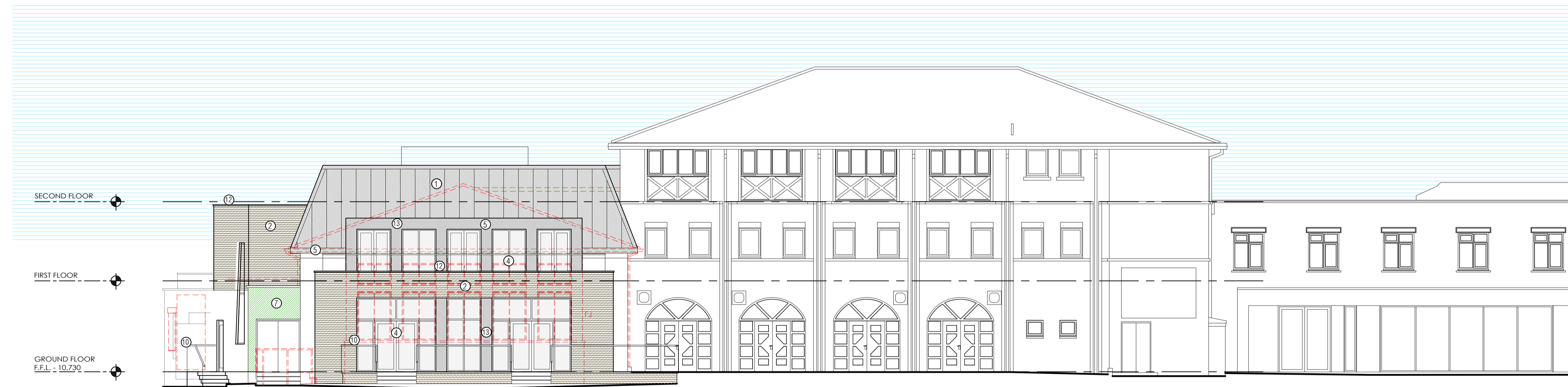
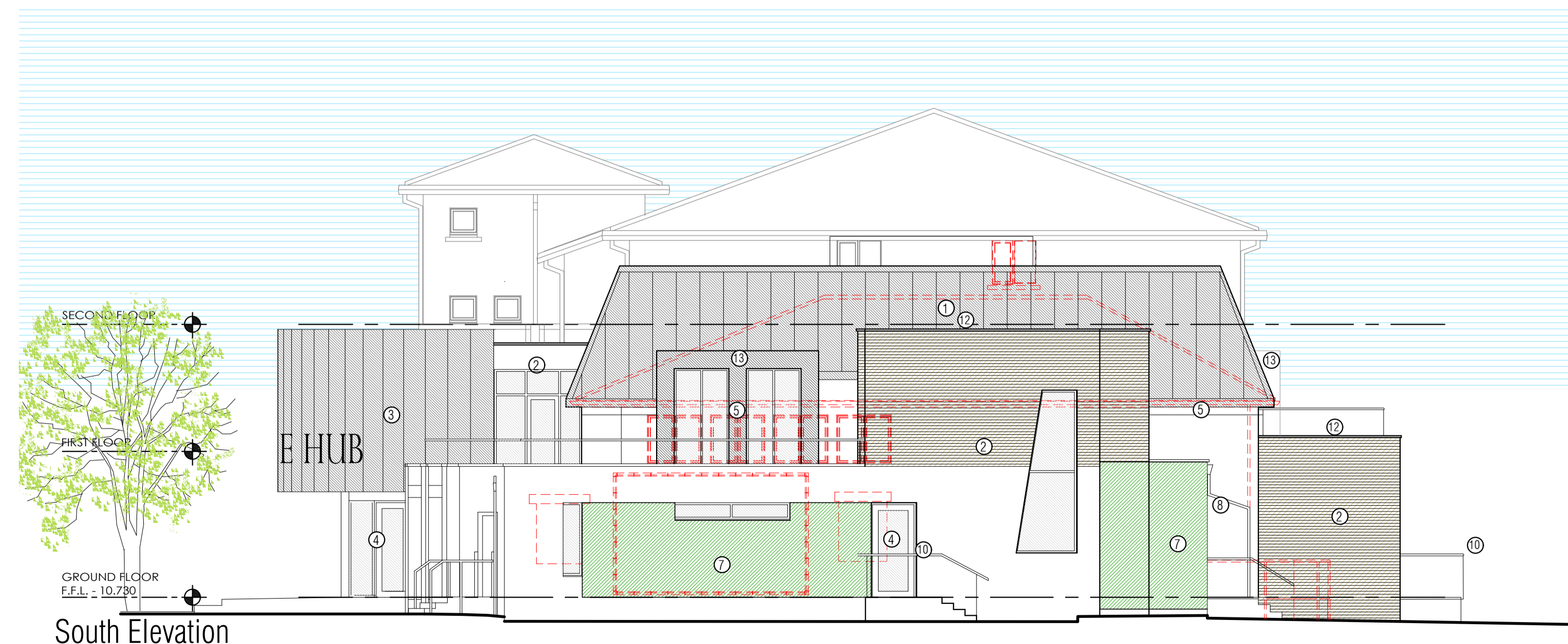




West Elevation



East Elevation



South Elevation

MATERIAL/FINISH KEY

- ① Rheinzink roof
- ② Facing brickwork to match existing
- ③ Rheinzink cladding
- ④ PPC aluminium windows & doors Colour grey
- ⑤ PPC fascia & verge. Colour grey
- ⑥ PPC aluminium windows & doors Colour grey
- ⑦ Green living wall
- ⑧ PPC aluminium RWP's
- ⑨ Rooflight
- ⑩ Stainless steel handrail with glass balustrade
- ⑪ Solar Panels
- ⑫ Stone coping.
- ⑬ Cladding Panels, Colour: Dark Grey.

1:100 Scale



Robothams Architects  
The Old Library  
12 Church Street  
Warwick CV34 4AB  
T 01926 493843  
F 01926 495314  
architects@robothams.co.uk  
www.robothams.co.uk



PROJECT TITLE

STUDENT HEART PROJECT  
PHASE II REFURBISHMENT  
ST MARY'S UNIVERSITY

DRAWING TITLE

PROPOSED ELEVATIONS

STATUS **PLANNING**

SCALE 1:100 SHEET SIZE A1 DRAWN EW

DATE February 2023 CHECKED AH

DWG NO. 4307-112 REVISION -