



River Thames

River side walk

Ranelagh Drive

House 01

House 02

House 03

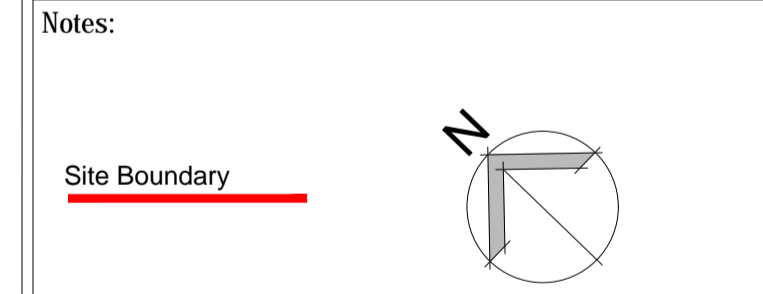
House 02 Car parks

House 01 Car parks

House 03 Car parks

- House 01 Ground Floor Private Amenity
Area: 115.75 m² - 1245.9 sqft
Total Area : 156.22 m² - 1689.5 sqft
- House 02 Ground Floor Private Amenity
Area: 11.92 m² - 128.3 sqft
Total Area : 53.14 m² - 571.9 sqft
- House 03 Ground Floor Private Amenity
Area: 200.42 m² - 2157.3 sqft
Total Area : 254.78 m² - 2742.3 sqft
- Ground Floor Shared Amenity
Area: 257.29 m² - 2769.4 sqft

General Notes
 This drawing is to be read in conjunction with all relevant design team specifications and drawings.
 All dimensions are to be checked on site prior to commencement of work any discrepancies reported to the Project Architect.
 All materials and components are to be handled, stored, protected, installed and finished strictly in accordance with the manufacturer's recommendations.
 © copyright SILVER JETTY LIMITED



REV	DATE	DESCRIPTION	INITIALS
P4	31.05.2023	PLANNING ISSUE	CJB

SILVER JETTY LIMITED

The Boathouse

Ranelagh Drive
 Twickenham
 TW1 1QZ

Proposed Ground Floor Private Amenity Plan

Scale: 1:100 @ A1

Project No:	PL-100	Sheet:	P4
Project Name:	SJ 171001	Author:	CJB
Date:	08.09.2022	Check:	JA
PLANNING			

