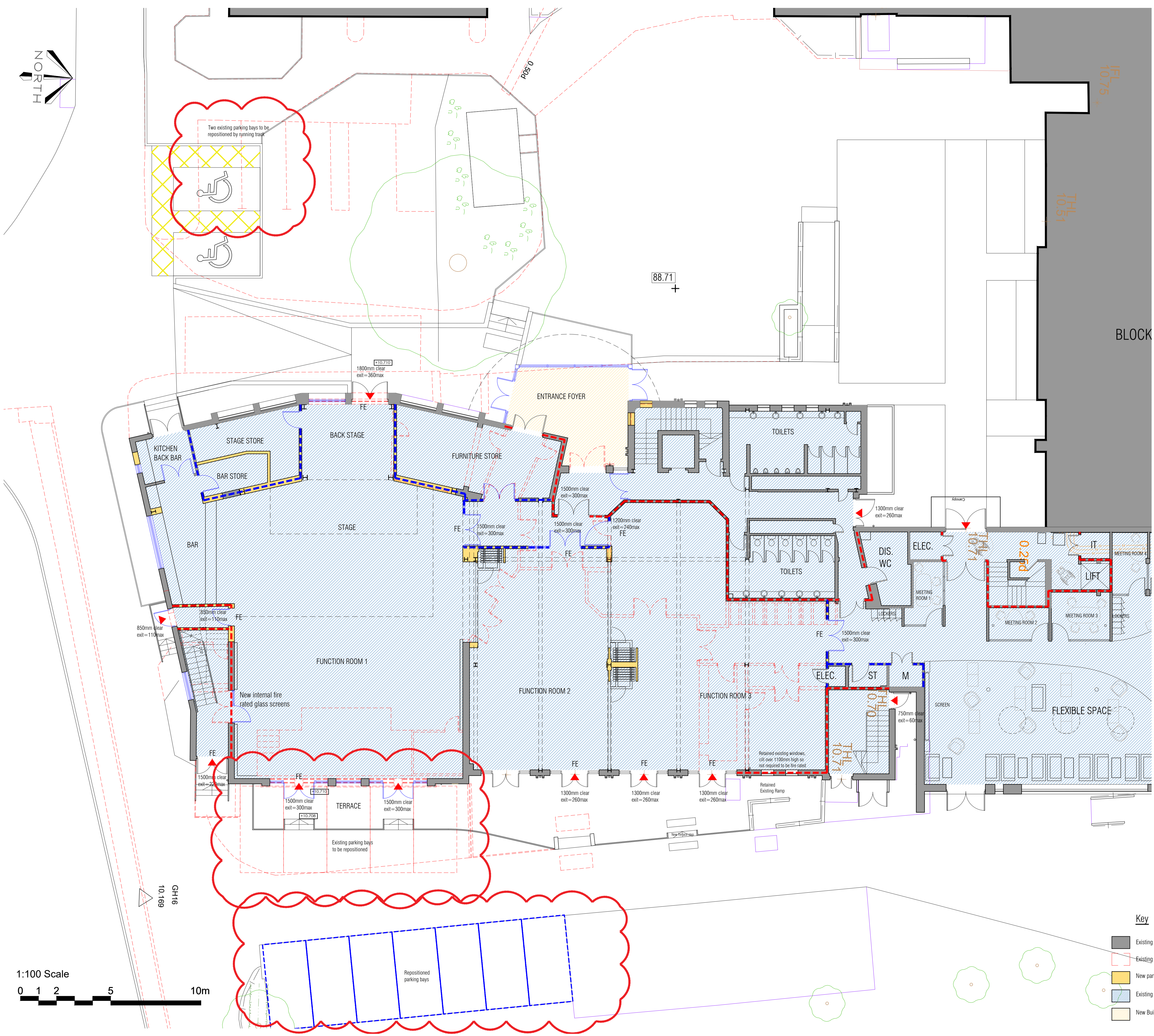


1:5000 Scale Location Plan.



FEL 10.75
THL 10.51

BLOCK

88.71 +

1800mm clear
exit = 360max
+10.710

850mm clear
exit = 110max

1850mm clear
exit = 190max

1500mm clear
exit = 300max

1500mm clear
exit = 300max
+10.710

1500mm clear
exit = 300max
+10.708

1300mm clear
exit = 260max

1300mm clear
exit = 260max

1300mm clear
exit = 260max

750mm clear
exit = 60max
THL 10.71

1300mm clear
exit = 260max

1500mm clear
exit = 300max

1500mm clear
exit = 300max

1500mm clear
exit = 300max

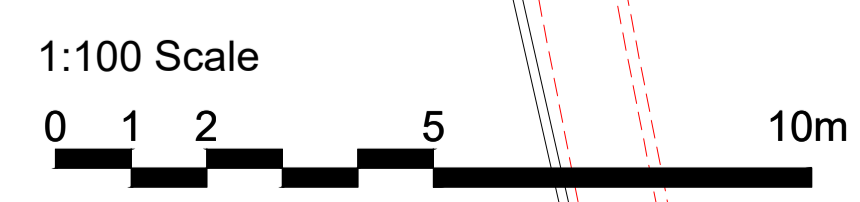
1200mm clear
exit = 240max
FE

Two existing parking bays to be repositioned by running track

Existing parking bays to be repositioned

Repositioned parking bays

GH16
10.169



- Key**
- Existing walls retained
 - Existing fixtures, fittings and walls removed
 - New partitions
 - Existing Building
 - New Build

Robothams Architects
The Old Library
12 Church Street
Warwick CV34 4AB
T 01926 493843
F 01926 495314
architects@robothams.co.uk
www.robothams.co.uk



PROJECT TITLE
**STUDENT HEART PROJECT
PHASE II REFURBISHMENT
ST MARY'S UNIVERSITY**

DRAWING TITLE
**PROPOSED GROUND FLOOR AND
SITE PLANS**

STATUS PLANNING			
SCALE 1:100	SHEET SIZE A1	DRAWN EW	
DATE February 2023	CHECKED AH		
DWG NO. 4307-110	REVISION	B	