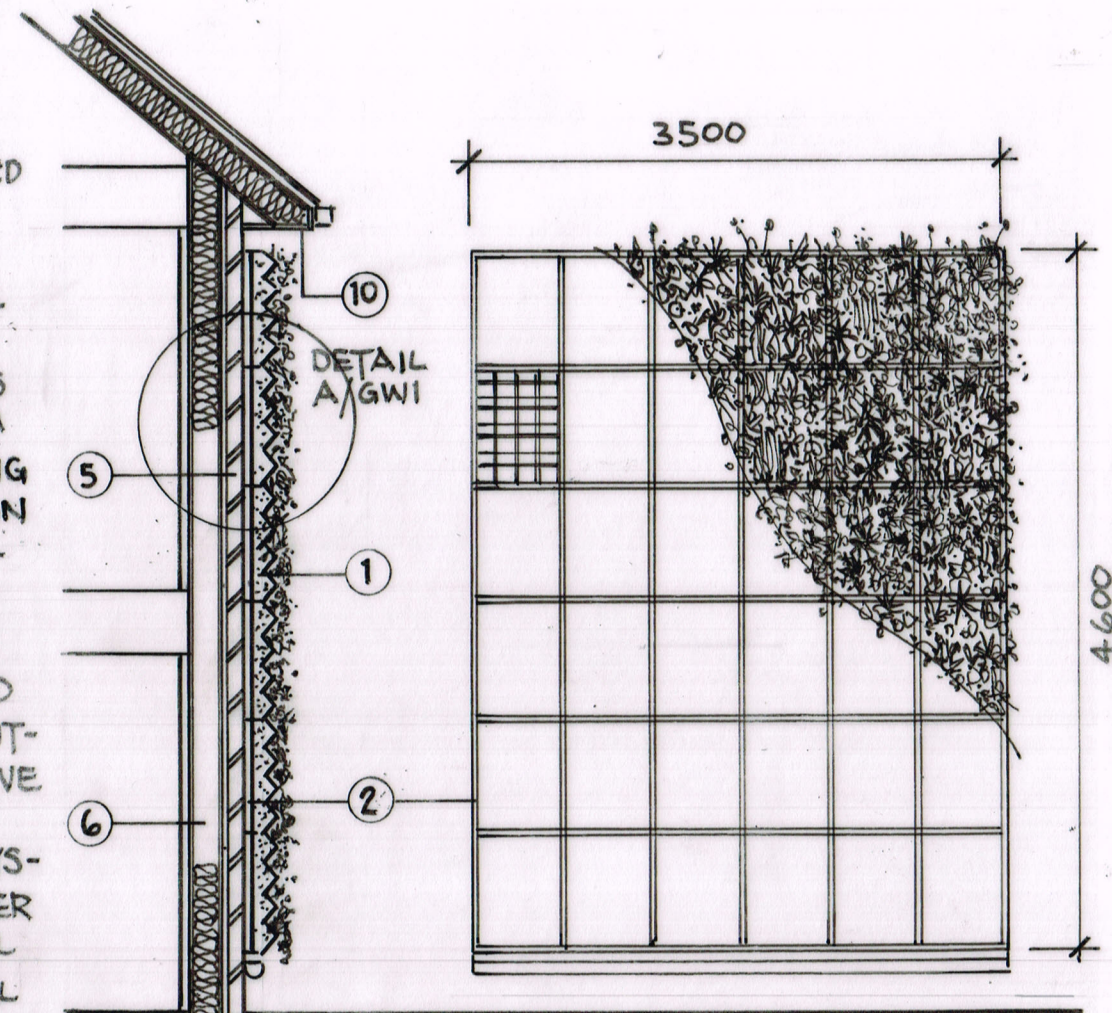


NOTES

1. MODULAR 'LIVING WALL' SYSTEM WITH INTEGRAL 'PLANTING POCKETS' MOUNTED ON STEEL RAILS SECURED TO BRICK BACKING WALL.
2. GALVANISED STEEL VERTICAL SUPPORT RAILS SECURED TO BRICKWORK WITH SS FIXINGS
3. ORGANIC GROWING MEDIUM SUITED TO VERTICAL PLANTING WITH GOOD WATER RETENTION CAPACITY, POROSITY, DRAINAGE AND ORIENTATION SUITED TO PLANTS SUCH AS FERNS, GRASSES, HERBS AND WILD FLOWERS COMPLEMENTING THE ADJACENT INTENSIVE GREEN ROOF.
4. INTEGRATED IRRIGATION SYSTEM FOR WATER & FERTILISER DISPERSAL ACROSS THE FULL EXTENT OF THE LIVING WALL
5. FACING BRICKWORK SECURED BACK TO STRUCTURAL FRAME WITH TIES AT NOM. 300MM. CENTRES TO PROVIDE SLIP-TO MODULAR SYSTEM.
6. NOMINAL 250MM. THICK SIP/ STRUCTURAL FRAME ZONE
7. VAPOUR CONTROL MEMBRANE.
8. BREATHER MEMBRANE.
9. SKIMMED PLASTERBOARD WALL FACING ON TIMBER BATTEMS.
10. FIBRE CEMENT EAVES SOFFIT PANEL WITH SEALED JOINTS TO PROVIDE A1 FIRE CLASSIFICATION PROTECTION IN ACCORDANCE WITH BS EN 13501-1:2018.



GREEN (LIVING) WALL SECTION AND ELEVATION
 (REFER TO EAST ELEVATION DWG. 19.00-E2)
 SCALE 1:50 @ A3

A GREEN 'LIVING' WALL ENCOURAGES GREATER BIODIVERSITY TOGETHER WITH THE GREEN ROOF.
 AN ORGANIC MEDIUM IN THE PLANTING CELLS OF THE 36 MODULES WITH A MONITORED WATERING & MAINTENANCE REGIME FED FROM HARVESTED RAINWATER, ALSO IRRIGATING THE INTENSIVE GREEN ROOF.

GREEN (LIVING) WALL DETAILS

DETAIL A/GWI
 SCALE 1:5 @ A3

THE MODULAR LIVING WALL INSTALLATION SECURED TO A BRICK WALL AND INTERNAL STRUCTURE WITH A FIRE-RESISTANT FIBRE CEMENT EAVES SOFFIT PANEL ABOVE.

PROPOSED 3NO MAISONETTES
 SITE ON CORNER OF ROSELEIGH CLOSE AND CAMBRIDGE PARK, EAST TWICKENHAM
 SCALE: AS SHOWN @ A3 JANUARY 2023
 DEON LOMBARD ARCHITECTS
 63 RIVERMEADS AVENUE, TWICKENHAM, TW2 5JF
 deon@deonlombardarchitects.com
 TEL: 07780958242