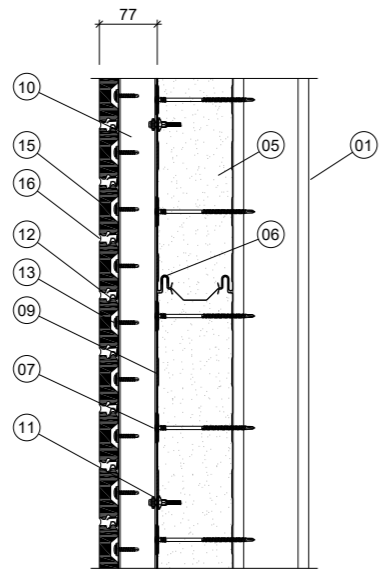
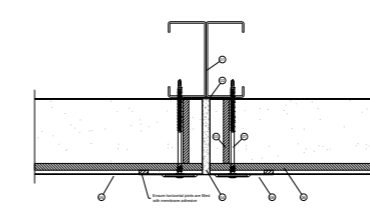


PLAN SECTION

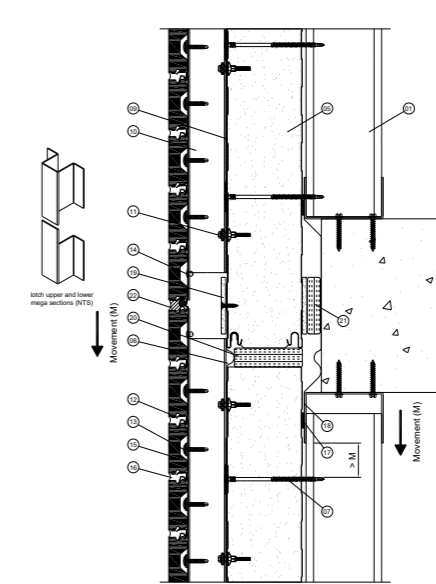


VERTICAL SECTION

- 01 SFS
- 05 Quadcore Karrier. Thickness to meet thermal and structural performance requirements
- 06 Factory applied weather seal
- 07 Karrier fasteners. Minimum of 3 Nr per Karrier per support subject to wind loads
- 09 20 x 3mm closed cell PVC foam tape Ref: KSSVG25
- 10 2mm thk Magnelis omega section at maximum 300mm horizontal centres
- 11 Fablok fastener Ref KSA FL6 at 500mm maximum vertical centres (both flanges) subject to wind loads
- 12 BrickClad Cassette
- 13 Fastener Ref RS-SSC-D1 at 600mm maximum horizontal centres staggered across alternate omega sections subject to wind loads
- 15 BrickClad brick slip
- 16 BrickClad pointing mortar



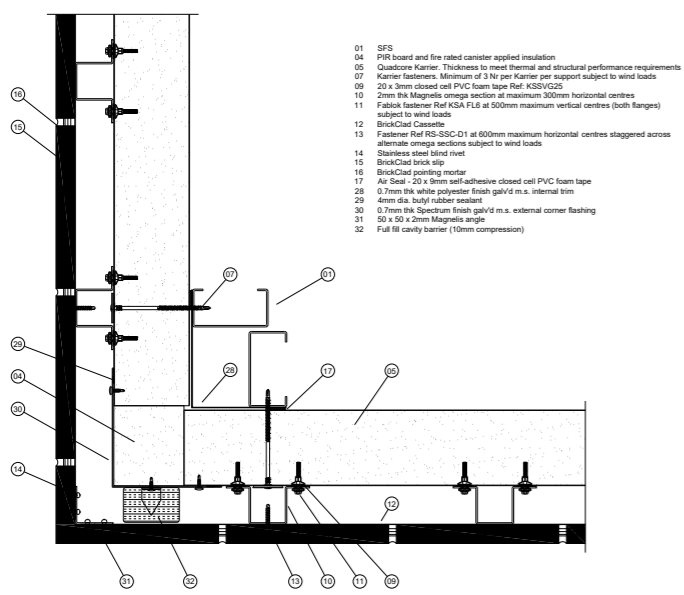
Vertical Joint Section



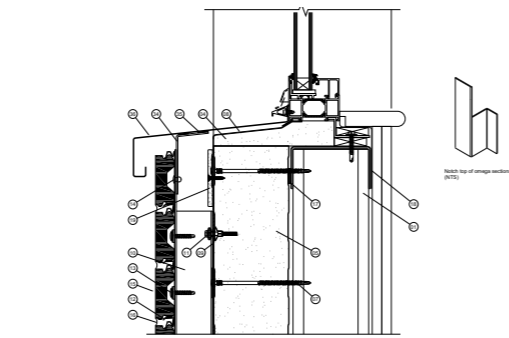
- 01 SFS
- 05 Quadcore Karrier. Thickness to meet thermal and structural performance requirements
- 07 Karrier fasteners. Minimum of 3 Nr per Karrier per support subject to wind loads
- 08 Polyester based membrane fully adhered to face of Karrier panel
- 09 20 x 3mm closed cell PVC foam tape Ref: KSSVG25
- 10 2mm thk Magnelis omega section at maximum 300mm horizontal centres
- 11 Fablok fastener Ref KSA FL6 at 500mm maximum vertical centres (both flanges) subject to wind loads
- 12 BrickClad Cassette
- 13 Fastener Ref RS-SSC-D1 at 600mm maximum horizontal centres staggered across alternate omega sections subject to wind loads
- 14 Stainless steel blind rivet
- 15 BrickClad brick slip
- 16 BrickClad pointing mortar
- 17 Air Seal - 20 x 3mm self-adhesive closed cell PVC foam tape
- 18 0.7mm thk white polyester finish galv'd m.s. internal trim
- 19 4mm dia bulb rubber sealant
- 20 0.7mm thk Spectrum finish galv'd m.s. external corner flashing
- 21 50 x 50 x 2mm Magnelis angle
- 22 Full fill cavity barrier (10mm compression)

Movement Joint Section

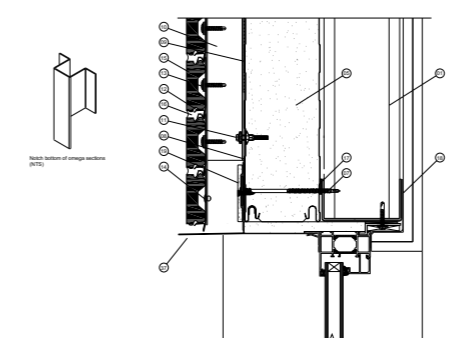
Rev	Date	Description



External Corner Section



Window Sill Section



Window Head Section



**FLUENT**  
ARCHITECTURAL DESIGN SERVICES

69-71 WINDMILL ROAD, SUNBURY,  
MIDDLESEX, TW16 7DT  
TEL: 0800 0438838  
E-MAIL: INFO@FLUENT-ADS.CO.UK  
WEB: FLUENT-ADS.CO.UK

Kingston Bridge House  
Church Grove, Hampton Wick

Detail Sheet

Scale	1:10 @ A3	Dwg No.	FLU.1191.3.28
Date	31.07.23	Rev	
Drawn	N.Millin		