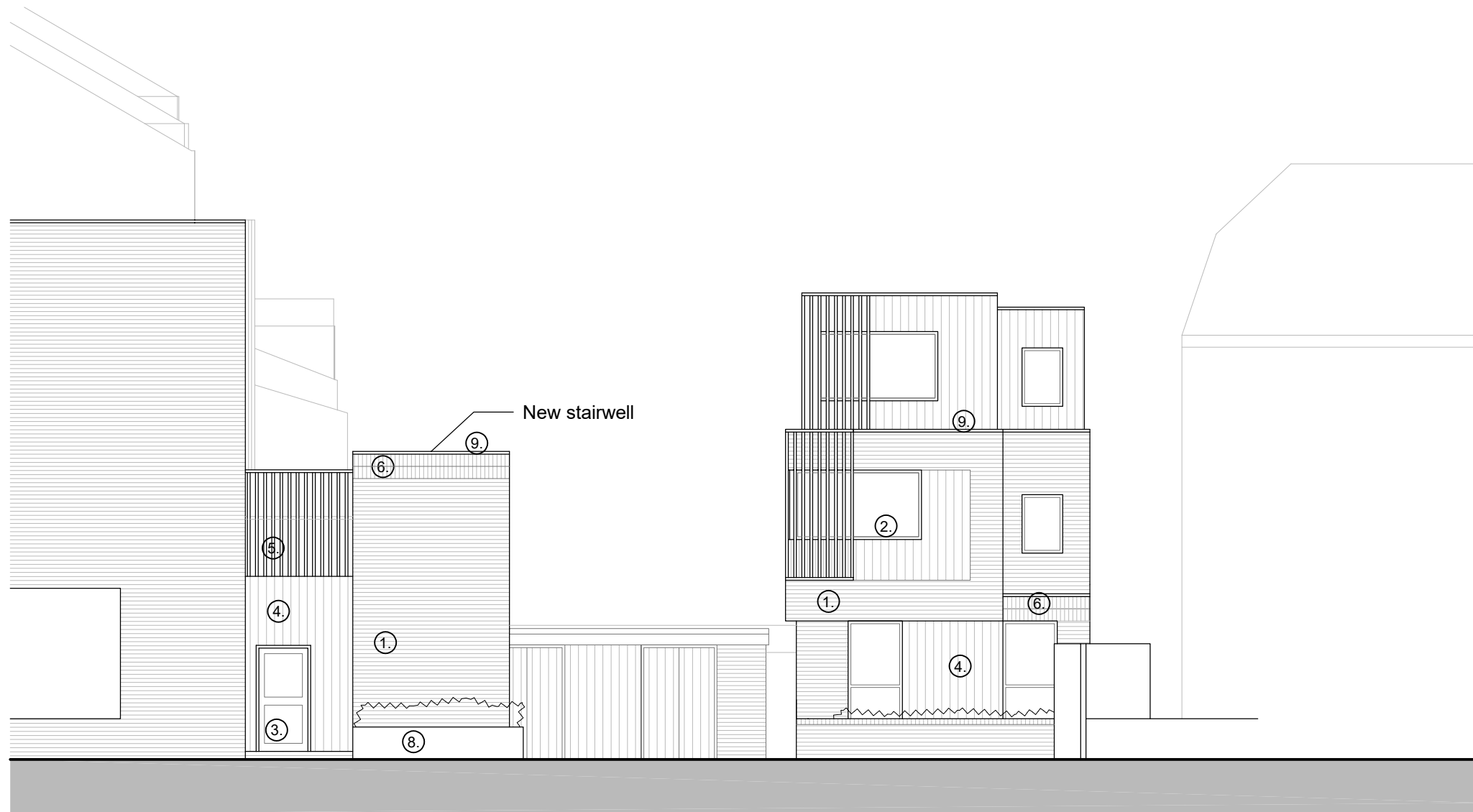


NOTES

GENERAL NOTES:  
 1. THIS DRAWING IS TO BE READ IN CONJUNCTION WITH THE OTHER RELEVANT CONSULTANTS DRAWINGS.  
 2. ALL FINISHES ARE TO CONFORM TO THE CURRENT BUILDING REGULATIONS.  
 3. REFER TO A SEPARATE DOCUMENT FOR THE DESIGNERS RISK ASSESSMENT.  
 4. ALL WORKS OR MATERIALS INDICATED ON THIS DRAWING ARE TO BE TO THE LATEST RELEVANT BRITISH STANDARDS AND CARRIED OUT IN ACCORDANCE WITH THE BRITISH STANDARDS CODES OF PRACTICE OR RECOGNIZED INSTITUTE OR TRADE ASSOCIATION RECOMMENDATIONS AND PUBLICATIONS.

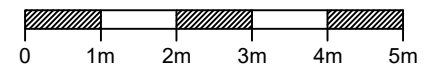
External Materials

- ① Red facing brickwork to LA approval.
- ② Grey powder coated aluminium windows.
- ③ Steel entrance door.
- ④ Vertical timber cladding.
- ⑤ Vertical timber balustrading.
- ⑥ Red soldier course brickwork to LA approval.
- ⑦ Vertical timber fins.
- ⑧ Grey Timber Low level planter.
- ⑨ Grey Aluminium coping.
- ⑩ Black Aluminium rainwater goods.



Proposed Context Elevation (Onslow Road)

1:100 scale



Revision	Date	Description	Drawn	Checked
P7	Aug 2023	Minor amendments	JB	
P6	July 2023	Amendments to suit client comments	LW	
P5	July 2023	Amendments to front wall	HM	
P4	July 2023	Amendments to stairwell	HM	
P3	July 2023	Amendments to levels	HM	

PLC ARCHITECTS  
 Lansdowne House  
 25-26 Hampshire Terrace  
 Portsmouth PO1 2QF  
 Hampshire England  
 Tel: (023) 92 755 333  
 E-Mail: admin@plcarchitects.com  
 Web: www.plcarchitects.com

Client:

Project:  
 Land at rear of  
 19-23 Friars Stile Road  
 Richmond TW10 6NH

Drawing Title:  
 Proposed Context Elevation  
 and Precedent Images

Drawn By: LW Date: Oct '22 Checked By: Approved By:

Drawing No: 22.3349.103 Revision: P7 Scale: 1:100 @ A3

PLC ARCHITECTS © COPYRIGHT RESERVED 2022  
 NOT TO BE SCALED. DIMENSIONS TO BE CHECKED ON SITE  
 SCALING ONLY FOR LOCAL AUTHORITY PURPOSES

Precedent Images



Overhanging element



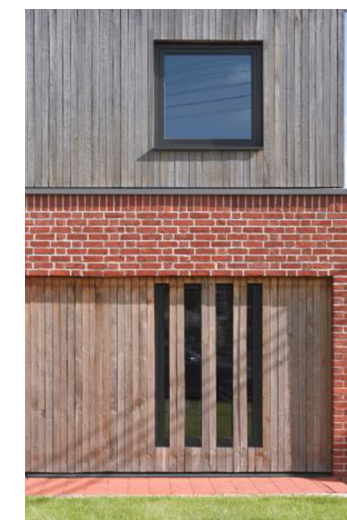
Vertical and horizontal juxtaposition



Frontage landscaping



Timber fins over windows



Complimentary materials