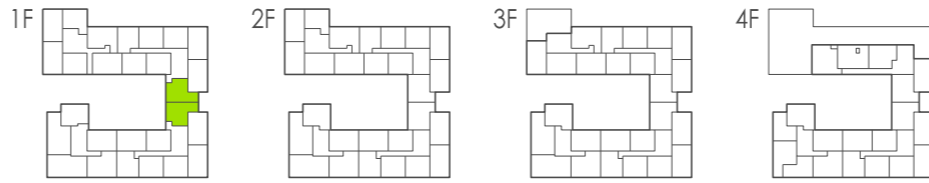




1 BEDROOM WHEELCHAIR UNIT TYPE 4

LOCATION
DIAGRAM



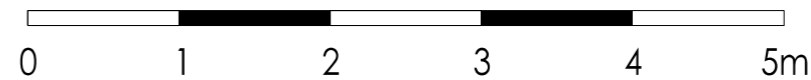
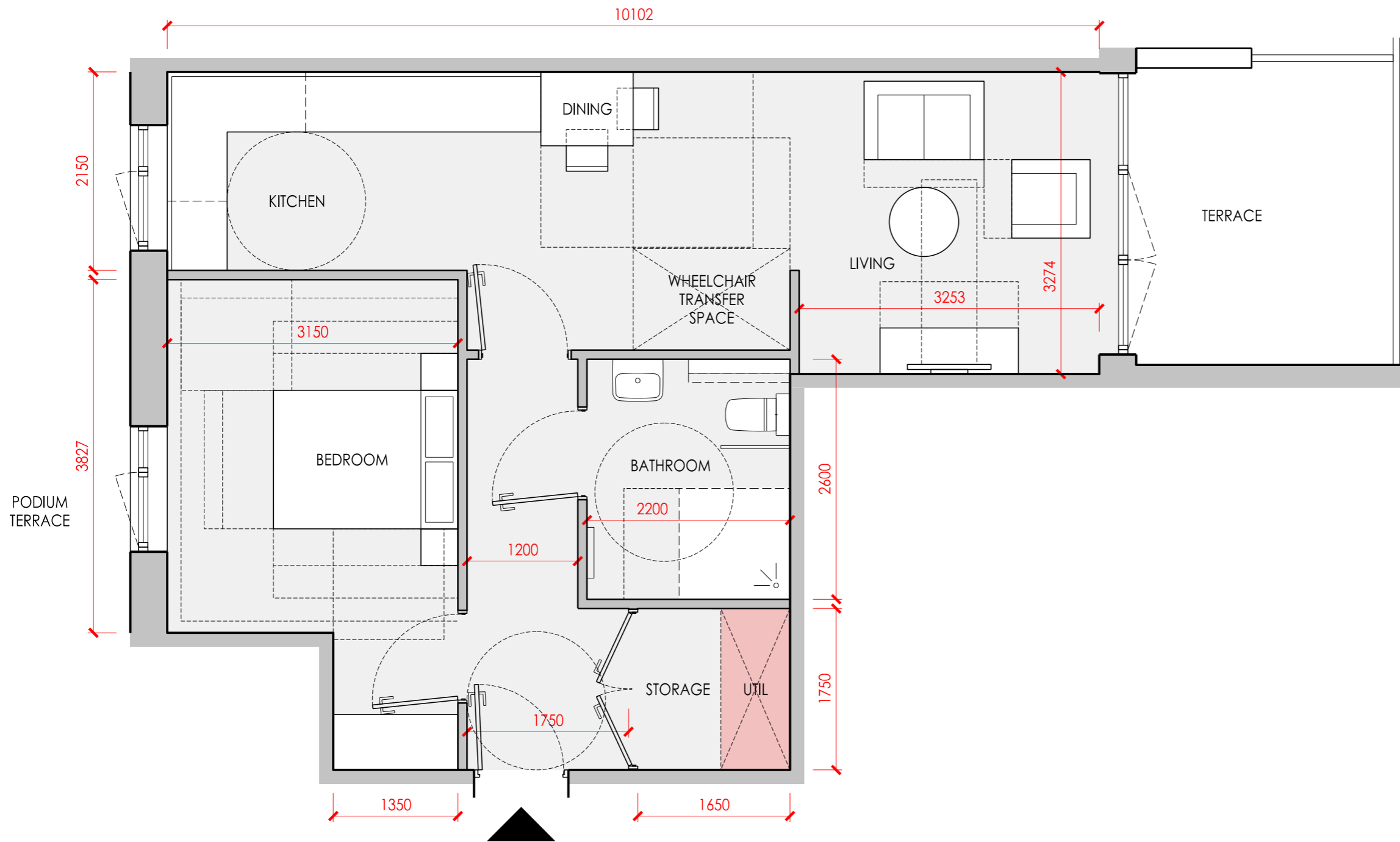
PLOT	sq m	sq ft
111	59.4	639
114	59.4	639

GENERAL NOTES

FIGURED DIMENSIONS ARE TAKEN TO STRUCTURE UNLESS INDICATED OTHERWISE.
 ALL DIMENSIONS TO BE CHECKED ON SITE PRIOR TO COMMENCEMENT OF WORK.
 DRAWING TO BE READ IN CONJUNCTION WITH ALL OTHER ARCHITECTS DRAWINGS, CONSULTANTS AND SPECIALISTS DRAWINGS, CONSTRUCTION NOTES, SPECIFICATIONS AND EMPLOYER'S REQUIREMENTS WHERE APPLICABLE.
 ANY DISCREPANCY MUST BE BROUGHT TO THE ATTENTION OF AHR. IF IN DOUBT, ASK.
 ANY MODIFICATION TO THIS DRAWING MUST BE CARRIED OUT BY AHR.
 THIS DRAWING REMAINS UNDER THE COPYRIGHT OF AHR ARCHITECTS LIMITED. PLEASE OBTAIN PERMISSION BEFORE COPYING.
 WHERE METHOD OF CONSTRUCTION INCORPORATES TIMBER/LIGHT GAUGE STEEL FRAME ALL ELEMENTS OF FRAME INCLUDING STUD LOCATIONS, NOGGINS, SHEATHING, LINTELS, TRUSSESS AND WIND BRACING TO BE TO FRAME MANUFACTURER'S DESIGN, DETAIL AND SPECIFICATION.
 ALL STRUCTURAL ELEMENTS ARE SHOWN INDICATIVELY. FOR ALL ELEMENTS OF STRUCTURE REFER TO STRUCTURAL ENGINEER'S AND SPECIALIST SUB-CONTRACTOR/FABRICATOR'S DESIGN, DETAIL AND SPECIFICATION.
 ALL MECHANICAL AND ELECTRICAL ELEMENTS ARE SHOWN INDICATIVELY. FOR ALL M&E INSTALLATIONS REFER TO BUILDING SERVICES ENGINEER'S AND SPECIALIST SUB-CONTRACTOR'S DESIGN, DETAIL AND SPECIFICATION.

WINDOW POSITIONS AND SIZES INDICATIVE ONLY

AREA SCHEDULE	PROPOSED	STANDARD
LIVING + DINING + KITCHEN	28.5m ²	25.0 m ²
BEDROOM	14.1m ²	13.5 m ²
STORAGE	1.6m ²	1.5 m ²
AMENITY	18.9 m ²	5.0 m ²



DATE	REV.	DESCRIPTION	BY	CHECKED
04/09/23	P02	AMENDMENTS FOLLOWING PLANNERS' COMMENTS	PP	DDS
15/10/19	P01	INITIAL ISSUE	PP	DDS

AHR
 31-35 KIRBY STREET
 LONDON EC1N 8TE
 TEL: 020-7837-9789
 www.ahr.co.uk

ARCHITECTS INTERIOR DESIGNERS
 MASTER PLANNERS URBAN DESIGNERS

CLIENT	Notting Hill Genesis		
PROJECT	St Clare SCL-AHR		
DRAWING TITLE	Unit type W4		
STATUS	PLANNING		
SCALE	1:50@A3	DRAWN BY	PP
DATE	2019.09	CHECKED BY	DDS
DRAWING NO.	B1-XX-DR-A-20-743-P1	REVISION	P02